



MILLINGTON, TN

August 12, 2019

Plaskolite Olive Branch

Subject: Extruder acceptance/baseline testing

---

Your machine was found to be in good condition but the motor has slight drive issues.

**QualiTest®** uses a four step rating system for defects.

**Class I:** Defect is present, but effect on reliability is not clear; no immediate action is required. Continue to normally monitor.

**Class II:** Defect (s) present that may cause problem in long term (2-6 months.). Repair during normal maintenance scheduling. Continue to monitor.

**Class III:** Defect (s) present that may cause failure in short term (less than 2 months.). This should be addressed as soon as practical, with a high maintenance priority. Increase monitoring frequency.

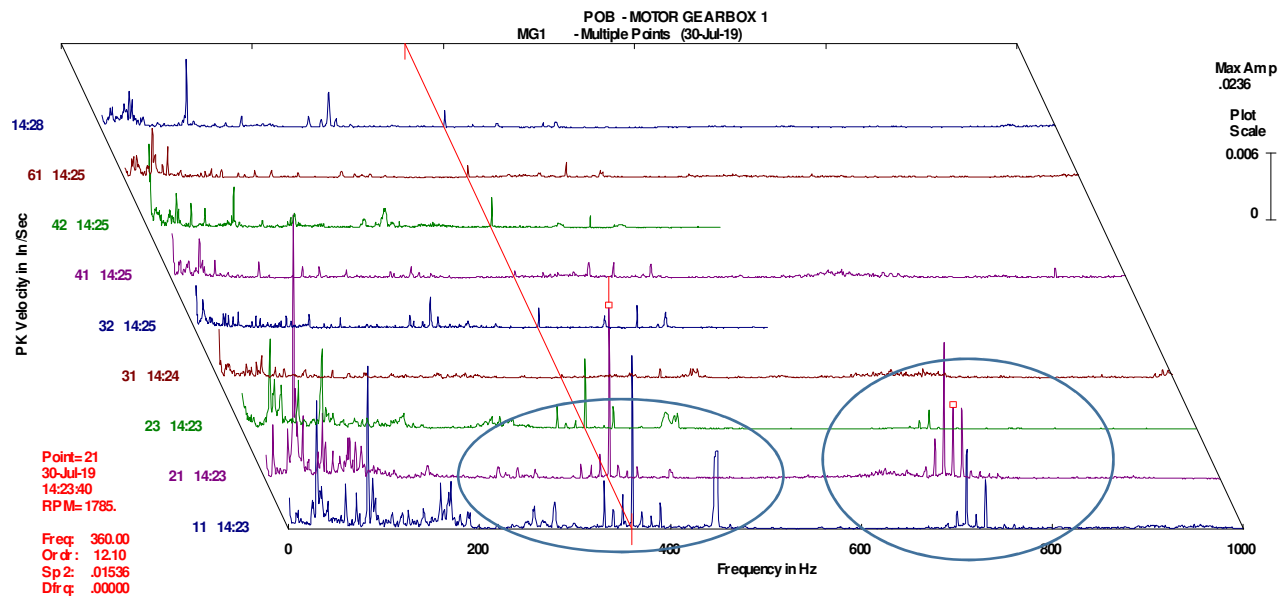
**Class IV:** Defect (s) present that makes continued reliability unpredictable, and possibility of secondary damage is high. Repairs should be made ASAP. An unscheduled shutdown should be considered for repairs

**Hi-Speed Industrial Service** tests and inspects industrial machinery and equipment and makes recommendations concerning maintenance and repairs based on its experience in the field of industrial repair and maintenance. The information contained herein is provided as an opinion only, not as a guaranty or warranty of the matters discussed herein.

This completes our assessment of your equipment for this survey. Thank you for your business and don't hesitate to call if you have any comments or questions.

Sincerely,

David W. Shook  
Senior Reliability Specialists  
**Hi-Speed Industrial Service**  
[dshook@gohispeed.com](mailto:dshook@gohispeed.com)



Acceleration waterfall plot of the vibration points for the motor/gearbox. Frequencies of interest are only in the motor: The cooling fan at near 29.5 Hz and electrical vibrations at 6x line (360 Hz) and 12x (720 Hz). The cooling fan vibrations are not an issue at this time. The electrical vibrations most likely attributed to the DC drive. Have the drive checked and inspected for proper operation as time allows.  
**Rated a Class I Defect at this time.**