



7030 Ryburn Drive Millington, TN 38053 Office: 901-873-5300 Fax: 901-873-5301  
gohispeed.com

# QualiTest IR Radiometric Survey Report



## ICE Industries

*David W. Shook*

ITC Certified Level I Infrared Thermographer  
[dshook@gohispeed.com](mailto:dshook@gohispeed.com)

Job Number	140286
Survey Date	7-31-19
Report Date	7-31-19

# QualiTest IR Radiometric Survey Report



All electrical panels were scanned using a FLIR P60 infrared camera. The following report only contains defects that were found during the survey. Below is our classification system for each defect contained in this report. If there are any questions or comments, please feel free to contact us at any time.

**Hi-Speed Industrial Service QualiTest Diagnostics** employs a three-step defect rating system:

**CLASS I** - A defect or defects are present that are likely to cause a problem in the long term (2-6 months). Should be addressed in the normal course of maintenance scheduling; continue to monitor.

**CLASS II** - A defect or defects are present that are likely to cause a failure in the short term (less than 2 months). Should be addressed as soon as is practical, on a high maintenance priority. Consideration should be given to increased monitoring frequency.

**CLASS III** - A defect or defects are present that make continued component reliability unpredictable, and likelihood of secondary damage is high. Consideration should be given to an unscheduled shutdown to correct.

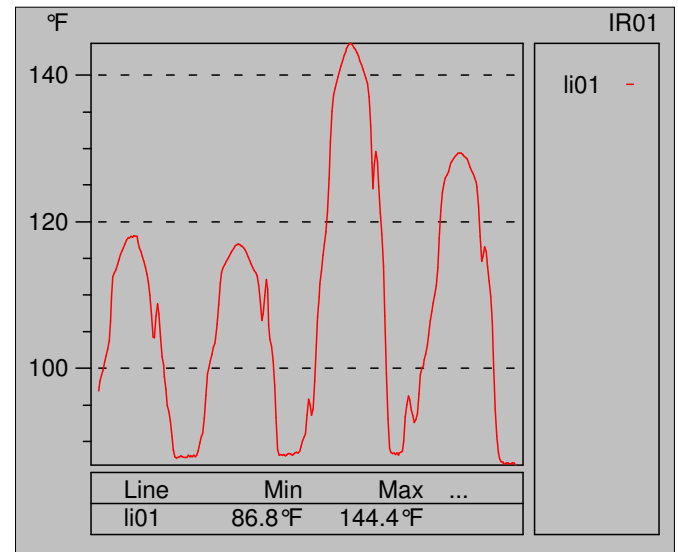
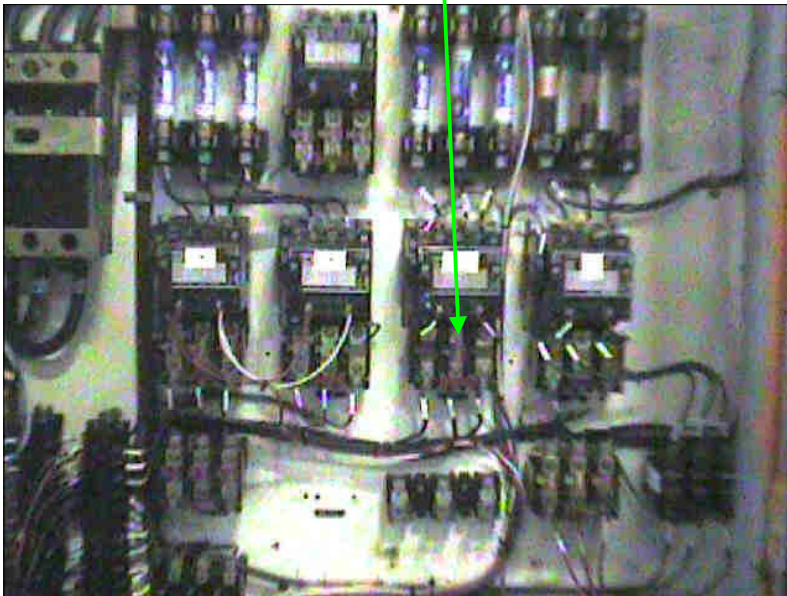
**Hi-Speed Industrial Service** tests and inspects industrial and equipment and makes recommendations concerning maintenance and repairs based on its experience in the field of industrial repair and maintenance. The information provided herein is provided as an opinion only, not as a guaranty or warranty of.



Component	Equipment/Bucket ID	Plant/Area	Date
Starter Coil	left Panel	Versen Press	7-31-19



Label	Value
IR : max	147.5°F
IR : min	83.7°F
SP01	147.5°F
SP02	130.3°F
SP03	117.0°F
LI01 : max	144.4°F
LI01 : min	86.8°F



<b>Fault</b>	Hot Coil
<b>Defect Rating</b>	Class I

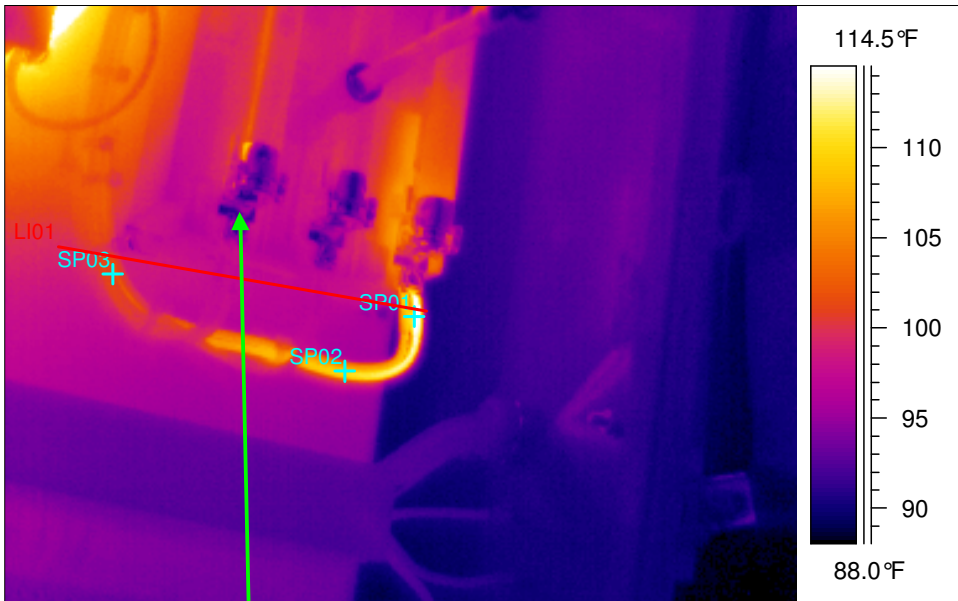
### Recommendation

Replace the starter coil as time allows.

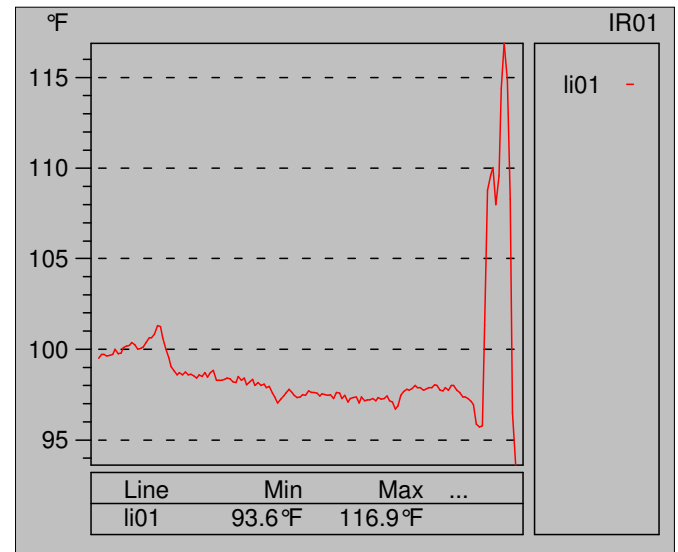




Component	Equipment/Bucket ID	Plant/Area	Date
Main Switch terminal	Volvo Heim Press	Back Building	7-31-19



Label	Value
IR : max	121.9°F
IR : min	87.2°F
SP01	116.5°F
SP02	110.0°F
SP03	101.3°F
LI01 : max	116.9°F
LI01 : min	93.6°F



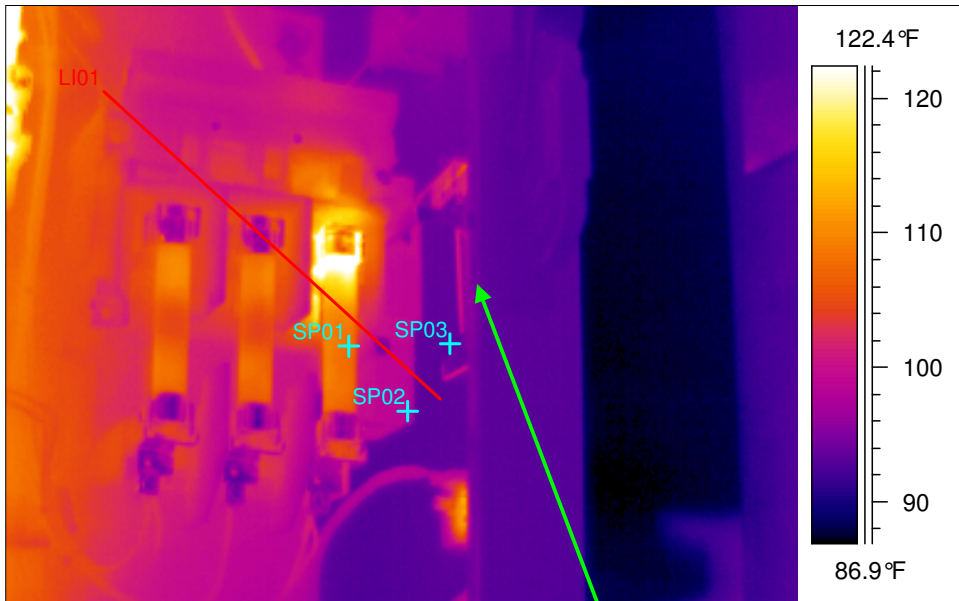
<b>Fault</b>	Poor connection
<b>Defect Rating</b>	Class I

### Recommendation

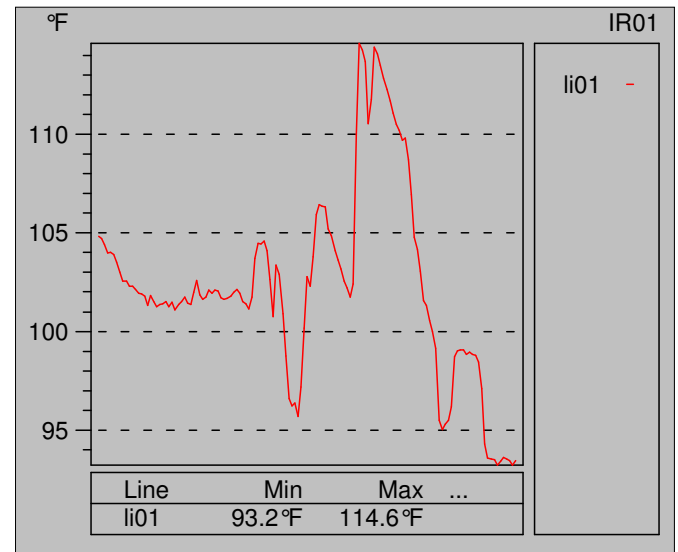
Localized heating at load side of "C" phase on main switch.  
Inspect the wire termination as well as the fuse clip. Repair or replace.



Component	Equipment/Bucket ID	Plant/Area	Date
Main switch "C" phase	Head Press 2	Back Building	7-31-19



Label	Value
IR : max	137.2°F
IR : min	86.6°F
SP01	108.3°F
SP02	98.5°F
SP03	93.4°F
LI01 : max	114.6°F
LI01 : min	93.2°F



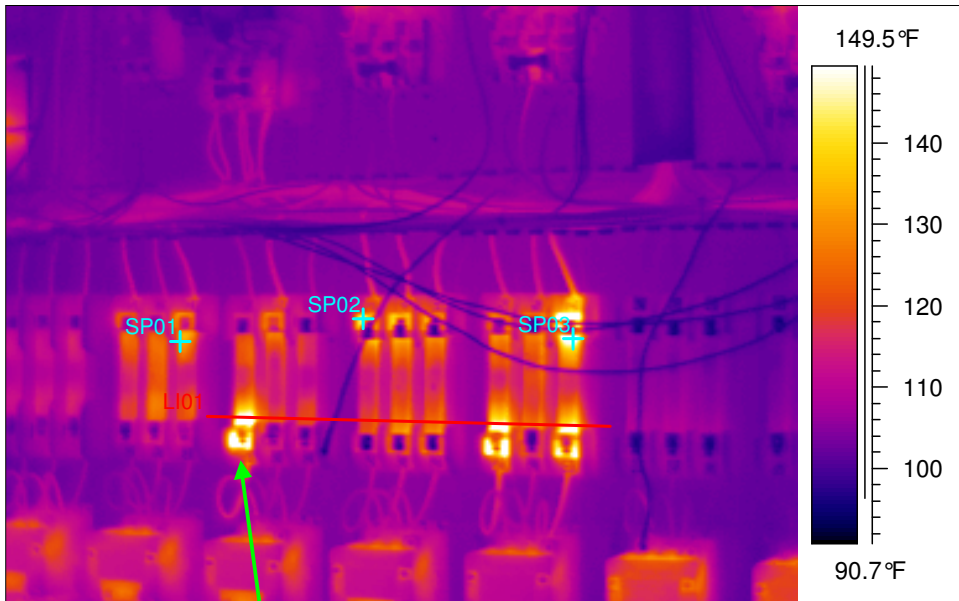
<b>Fault</b>	Poor connection at switch
<b>Defect Rating</b>	Class I

### Recommendation

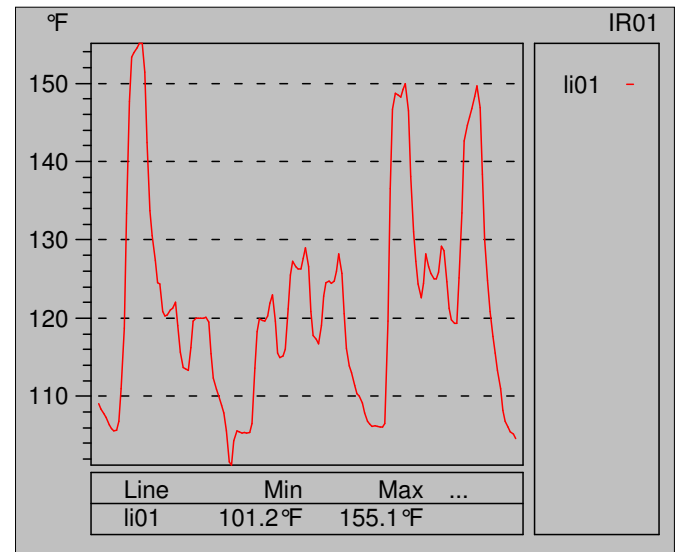
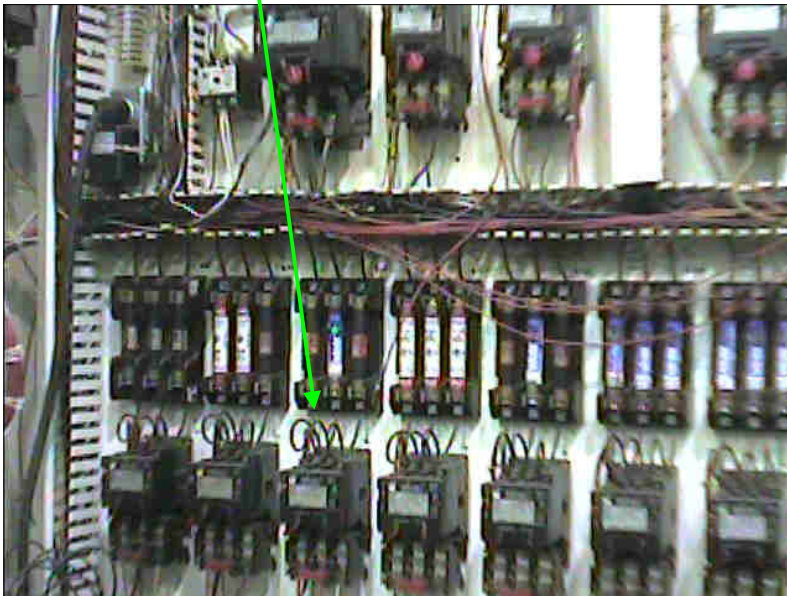
Excessive heat found "C" phase line side fuse clip or possibly internal switch connection.  
Clean and inspect, repair or replace.



Component	Equipment/Bucket ID	Plant/Area	Date
Left Panel	Paint Line	Back Building	7-31-19



Label	Value
IR : max	177.0°F
IR : min	95.5°F
SP01	130.7°F
SP02	138.0°F
SP03	157.7°F
LI01 : max	155.1°F
LI01 : min	101.2°F



<b>Fault</b>	Poor connections
<b>Defect Rating</b>	Class II

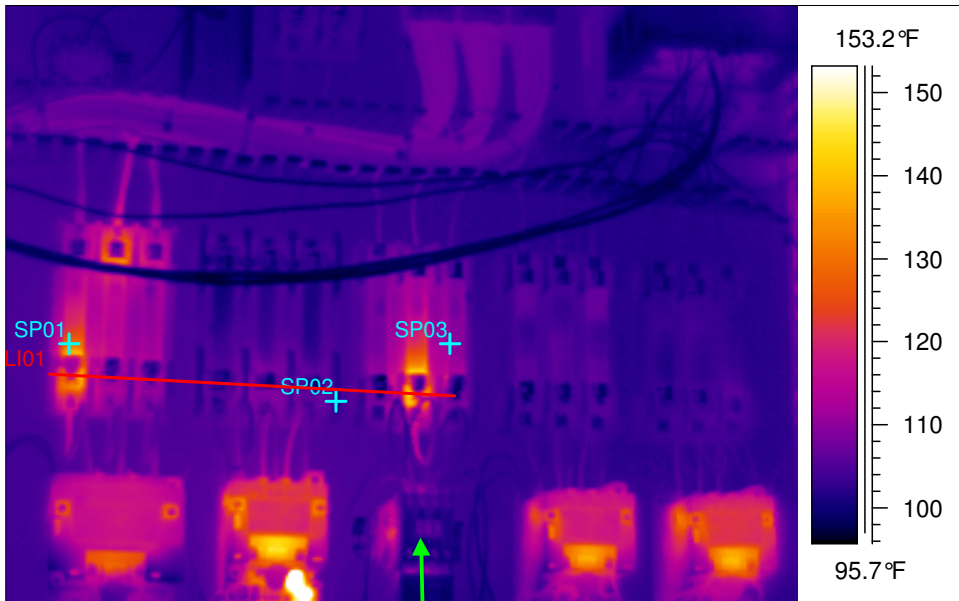
### Recommendation

Bottom Left Fuse Blocks have multiple poor connections at the fuse clips and wire terminations. 2nd from left to the 5th have notable issues. Clean and inspect, repair or replace.

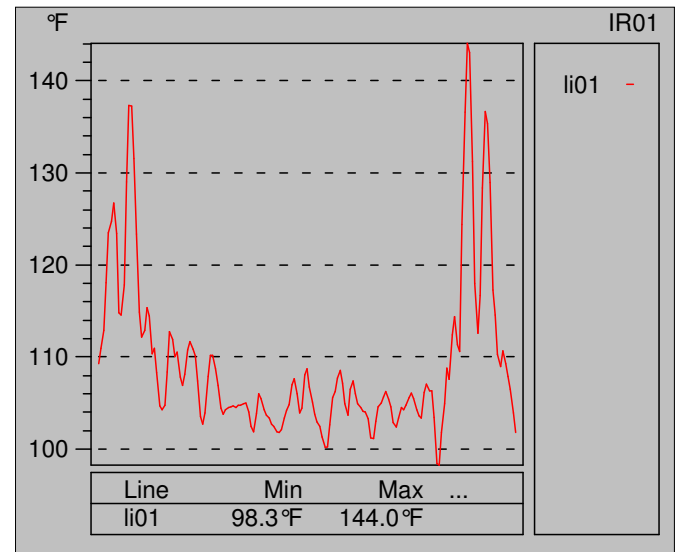
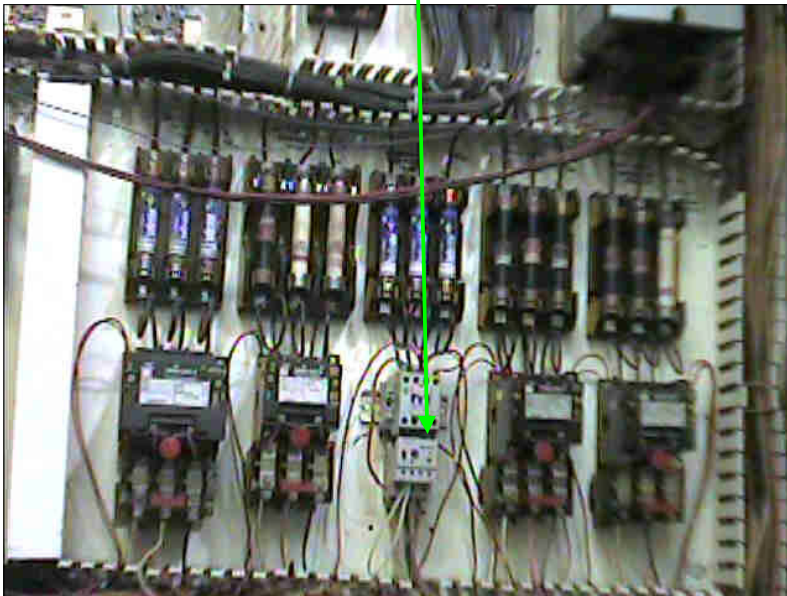




Component	Equipment/Bucket ID	Plant/Area	Date
Right Middle Fuse Blocks	Paint Line	Back Building	7-31-19



Label	Value
IR : max	>320.4°F
IR : min	96.7°F
SP01	129.1°F
SP02	102.7°F
SP03	110.3°F
LI01 : max	144.0°F
LI01 : min	98.3°F



<b>Fault</b>	Poor Connections at fuse blocks
<b>Defect Rating</b>	Class I

### Recommendation

Paint Panel right middle fuse blocks.  
Inspect the 1st and 3rd fuse blocks. Clean and inspect. Repair or Replace.