



KEEPING YOUR FACILITY UP TO SPEED
— EVERY DAY SINCE 1946 —

Motor Shop Repairs

Job Number 99332

Prepared for Green Bay Packaging, Pinecrest (11362)

P.O. Box 37
Plummerville AR 72127

Table of Contents

AC Recondition Repair Report	1.0
AC Recondition As Found - <i>Shop</i>	2.0



Hi-Speed Industrial Service
7030 Ryburn Dr
Millington, Tn 38053
901-873-5300

AC Recondition Repair Report

FolderID: 99332
FormID: 12714930

Green Bay Packaging, Pinecrest
(11362)
P.O. Box 37
Plummerville, AR 72127

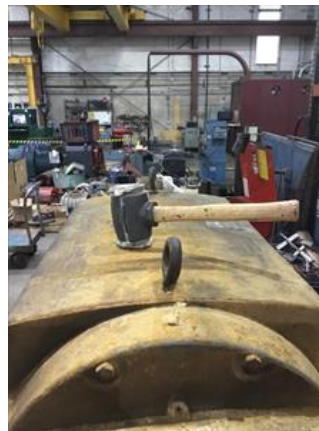
Priorities Found: ● 15 - Good

General

1. Job Number	99332
2. Report Date	1/31/2022
3. Customer	Green Bay Packaging
Pinecrest Division	

Name Plate Information

4. Manufacturer	US Motors
-----------------	-----------



Hi-Speed Industrial Service disclaims all warranties, both express and implied, relating to the information, reports, opinions and analysis disclosed to the Customer by Hi-Speed. Hi-Speed shall not be liable for any errors or omissions, or any losses, injury or damages arising from the use of such information, reports, opinions and analysis by the Customer.




5. Model	C522378-651
6. Serial Number	
7. Horsepower	350
8. KW	
9. Volts	4160
10. Amps	45
11. RPM	1775
12. Frame	5009
13. Enclosure	
14. Cycles	60
15. Phase	3
16. Service Factor	1.15
17. Motor Mount Position	
Initial Inspection	
18. Number of Leads	3
19. Lead Length	26 Inches
20. Lead Size	
21. Lead Condition	(P) Pass
22. Lead Markings	
23. Lug Size, Condition, and Type	
24. Winding RTD's	(NA) Not Applicable
25. Winding Rtd's Condition	(NA) Not Applicable

Hi-Speed Industrial Service disclaims all warranties, both express and implied, relating to the information, reports, opinions and analysis disclosed to the Customer by Hi-Speed. Hi-Speed shall not be liable for any errors or omissions, or any losses, injury or damages arising from the use of such information, reports, opinions and analysis by the Customer.

26. Shaft Run Out	
27. Does Shaft Turn Freely	no
28. Does Shaft Have Visible Damage	no
29. Bearing Rtd's	(NA) Not Applicable
● 30. Bearing Rtd's Condition	(NA) Not Applicable
31. Contamination	
● 32. Frame Condition	(P) Pass
● 33. Fan Condition	(NA) Not Applicable
34. Broken or missing components	
Initial Electric Test	
35. Resistance to Ground	
36. Winding Resistance 1-2	
37. Winding Resistance 2-3	
38. Winding Resistance 1-3	
39. Resistive Imbalance	
40. Hi-Pot	
41. Surge Test	
42. Stator Condition	



43. Failure Location	
Initial Rotor Inspection	
44. Rotor Type	
45. Air Gap <10% Variation	
46. Number of Rotor Bars	
47. Number of Broken Rotor Bars	
48. Growler Test	
● 49. Rotor Condition	(P) Pass
<div>  <i>Wash and bake</i> </div>	
Mechanical Inspection	
50. Bearing Manufacture	MRC

Hi-Speed Industrial Service disclaims all warranties, both express and implied, relating to the information, reports, opinions and analysis disclosed to the Customer by Hi-Speed. Hi-Speed shall not be liable for any errors or omissions, or any losses, injury or damages arising from the use of such information, reports, opinions and analysis by the Customer.

51. Bearing DE Size

222M



52. Bearing DE Type

max ball bearing

53. DE Bearing Qty.

1

54. Bearing ODE Size

6222



55. Bearing ODE Type

ball bearing

56. ODE Bearing Qty.

1

57. Insulated Bearing

no

58. Lubrication Type


grease

59. Grease Condition

(P) Pass

☐ Pass on ode de no grease

Hi-Speed Industrial Service disclaims all warranties, both express and implied, relating to the information, reports, opinions and analysis disclosed to the Customer by Hi-Speed. Hi-Speed shall not be liable for any errors or omissions, or any losses, injury or damages arising from the use of such information, reports, opinions and analysis by the Customer.

60. Bearing Retainers	
61. Shaft Grounding Device	(NA) Not Applicable
62. DE Seal	(NA) Not Applicable
63. DE Seal Type/Size	
64. ODE Seal	(NA) Not Applicable
65. ODE Seal Type/Size	
Root Cause of Failure	
66. Component Failure	Drive bearing had no grease
67. Cause of Failure	
68. Comments	<i>Motor full of saw dust</i>
69. Service Technician	RW
	
Machine Fit Inspection Report	
70. Shaft Run Out	



71. Initial Shaft Run Out	
72. Final Shaft Run Out	
73. DE Bearing Shaft Fit	(P) Pass



74. DE Initial Shaft Bearing Fit Size 1	4.332 "
---	---------

Hi-Speed Industrial Service disclaims all warranties, both express and implied, relating to the information, reports, opinions and analysis disclosed to the Customer by Hi-Speed. Hi-Speed shall not be liable for any errors or omissions, or any losses, injury or damages arising from the use of such information, reports, opinions and analysis by the Customer.

75. DE Initial Shaft Bearing Fit Size 2	4.3319 "
76. DE Initial Shaft Bearing Fit Size 3	4.332 "
77. DE Finial Shaft Bearing Fit Size 1	
78. DE Finial Shaft Bearing Fit Size 2	
79. DE Finial Shaft Bearing Fit Size 3	
80. ODE Bearing Shaft Fit	(P) Pass



81. ODE Initial Shaft Bearing Fit Size 1	4.3308 "
82. ODE Initial Shaft Bearing Fit Size 2	4.3308 "
83. ODE Initial Shaft Bearing Fit Size 3	4.3308 "
84. ODE Finial Shaft Bearing Fit Size 1	
85. ODE Finial Shaft Bearing Fit Size 2	
86. ODE Finial Shaft Bearing Fit Size 3	
87. DE Air Seal Shaft Fit	
88. DE Initial Air Seal Shaft Size	
89. DE Final Air Seal Shaft Size	
90. ODE Air Seal Shaft Fit	
91. ODE Initial Air Seal Shaft Size	
92. ODE Final Air Seal Shaft Size	
93. DE Endbell Fit	(P) Pass



94. DE Initial Endbell Fit Size 1	7.8746 "
95. DE Initial Endbell Fit Size 2	7.8746 "
96. DE Initial Endbell Fit Size 3	7.8746 "

Hi-Speed Industrial Service disclaims all warranties, both express and implied, relating to the information, reports, opinions and analysis disclosed to the Customer by Hi-Speed. Hi-Speed shall not be liable for any errors or omissions, or any losses, injury or damages arising from the use of such information, reports, opinions and analysis by the Customer.

97. DE Final Endbell Fit Size 1	
98. DE Finial Endbell Fit Size 2	
99. DE Final Endbell Fit Size 3	
100. DE Endbell Fit Insulated	(NA) Not Applicable
101. DE Endbell Air Seal Fit	
102. Initial Endbell Air Seal Fit Size	
103. Finial Endbell Air Seal Fit Size	
104. ODE Endbell Fit	(P) Pass



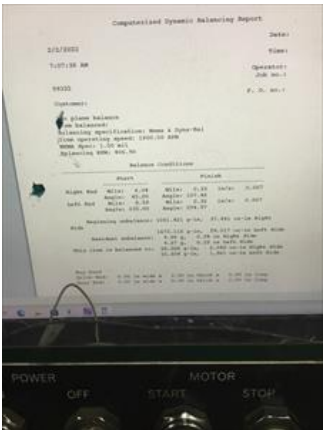
105. ODE Initial Endbell Fit Size 1	7.8753 "
106. ODE Initial Endbell Fit Size 2	7.8753 "
107. ODE Initial Endbell Fit Size 3	7.8753 "
108. ODE Final Endbell Fit Size 1	
109. ODE Final Endbell Fit Size 2	
110. ODE Final Endbell Fit Size 3	
111. ODE Endbell Fit Insulated	(NA) Not Applicable
112. ODE Endbell Air Seal Fit	
113. ODE Initial Endbell Seal Fit Size	
114. ODE Finial Endbell Seal Fit Size	
115. Foot Flatness	
116. Foot Condition	(P) Pass
117. Flange Condition	(NA) Not Applicable
118. Service Technician	RW

Balancing Report

119. Balance Type	
120. Balance Operating Speed	406 RPM
121. Start Left End	9.59 Mills
122. Start Right End	6.04 Mills

Hi-Speed Industrial Service disclaims all warranties, both express and implied, relating to the information, reports, opinions and analysis disclosed to the Customer by Hi-Speed. Hi-Speed shall not be liable for any errors or omissions, or any losses, injury or damages arising from the use of such information, reports, opinions and analysis by the Customer.

123. Balancing Specification



124. Finish Left End	0.32 Mills
125. Finish Right End	0.33 Mills
126. Service Technician	RW

RW

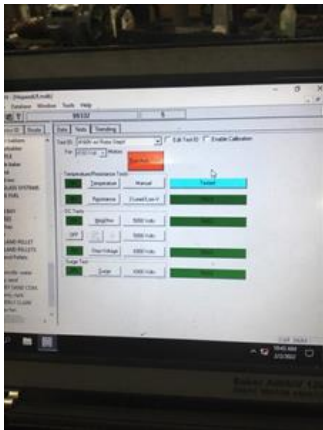
Assembly and Final Test

127. Meggar Testing Reading	28,380 Mohm
-----------------------------	-------------



128. Surge Test

(P) Pass



129. Hi-Pot

130. Winding Resistance 1-2	1.71 Ohm's
131. Winding Resistance 2-3	1.716 Ohm's
132. Winding Resistance 1-3	1.719 Ohm's
133. Test Run Voltage Phase A	4132 Volts



134. Test Run Amps A	10.3 Amps
135. Test Run Voltage Phase B	4155 Volts



136. Test Run Amps B	10.1 Amps
137. Test Run Voltage Phase C	4160 Volts

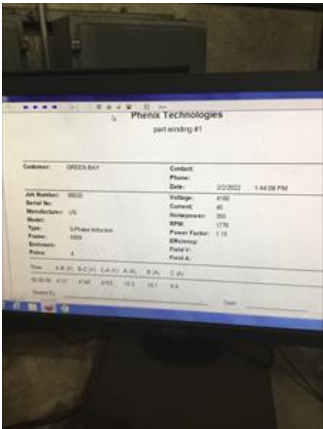
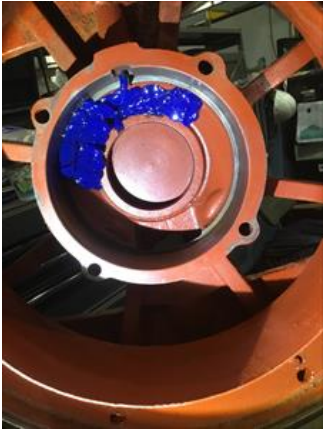
Hi-Speed Industrial Service disclaims all warranties, both express and implied, relating to the information, reports, opinions and analysis disclosed to the Customer by Hi-Speed. Hi-Speed shall not be liable for any errors or omissions, or any losses, injury or damages arising from the use of such information, reports, opinions and analysis by the Customer.



138. Test Run Amps C	9.9 Amps
139. DE Horizontal Vibration Reading	0.05 In/Sec
140. DE Vertical Vibration Reading	0.070000000000000001 In/Sec
141. DE Axial Vibration Reading	0.05 In/Sec
142. ODE Horizontal Vibration Reading	0.02 In/Sec
143. ODE Vertical Vibration Reading	0.04 In/Sec
144. ODE Axial Vibration Reading	0.06 In/Sec
145. Ambient Temp at start of Test Run	
146. Temp at 5 minutes	
147. Temp at 10 minutes	
148. Temp at 15 minutes	
149. Temp at 20 minutes	
150. Temp at 25 minutes	
151. Temp at 30 minutes	
152. Temp at 35 minutes	
153. Temp at 40 minutes	
154. Temp at 45 minutes	
155. Temp at 50 minutes	
156. Temp at 55 minutes	
157. Temp at 60 minutes	
● 158. Motor Paint	(P) Pass



Hi-Speed Industrial Service disclaims all warranties, both express and implied, relating to the information, reports, opinions and analysis disclosed to the Customer by Hi-Speed. Hi-Speed shall not be liable for any errors or omissions, or any losses, injury or damages arising from the use of such information, reports, opinions and analysis by the Customer.



159. Service Technician

RW

R U



Hi-Speed Industrial Service
7030 Ryburn Dr
Millington, Tn 38053
901-873-5300

AC Recondition As Found
Green Bay Packaging, Pinecrest (11362)
P.O. Box 37
Plummerville, AR 72127

FolderID: 99332
FormID: 12732314

AC Recondition - Rev. 2

Location: Shop
Serial Number: C522378-651

Hi-Speed Job Number: 99332
Manufacturer: US Motors/Nidec
Product Number: C522378-651
Serial Number: C522378-651
HP/kW: 350 (HP)
RPM: 1775 (RPM)
Voltage: 4160
Current: 45
Phase: Three
Hz: 60 (Hz)
Enclosure: DP
Date Received: 01/31/2022
Repair Stage: Teardown Inspection
Rewind: No
Winding Type : Form Coil
Bearing Type: Rolling Element

Priorities Found:

Overall Condition

1. Report Date
2. Nameplate Picture
3. Describe the Overall Condition of the Equipment as Received
4. Distance from the end of the shaft to the Coupling/Sheave
5. Report Date [COPY]

Initial Mechanical/Electrical

6. Does Shaft Turn Freely?
7. Does Shaft Have Visible Damage?
8. Assembled Shaft Runout
9. Assembled Shaft End Play
10. Air Gap Variation <10%
11. Lead Condition
12. Lead Length
13. Stator Temperature Detector Rating and Function

Quantity	Rating	Quantity Passed
----------	--------	-----------------

14. Bearing Temperature Detector Rating and Function

Quantity	Rating	Quantity Passed
----------	--------	-----------------

15. Frame Condition
16. Fan Condition

Hi-Speed Industrial Service disclaims all warranties, both express and implied, relating to the information, reports, opinions and analysis disclosed to the Customer by Hi-Speed. Hi-Speed shall not be liable for any errors or omissions, or any losses, injury or damages arising from the use of such information, reports, opinions and analysis by the Customer.

17. Heater Quantity, Ratings		
Quantity	Volts/Watts	Pass/Fail
18. Broken or Missing Components		
Initial Electrical Inspection		
19. Insulation Resistance/Megger		
20. Winding Resistance		
1-2	1-3	2-3
21. Perform Surge Test		
22. Stator Condition		
Mechanical Inspection		
23. Drive End Bearing Number-		
24. Drive End Bearing Qty.		
25. Drive End Bearing Type		
26. Drive End Lubrication Type		
27. Drive End Bearing Insulation or Grounding Device?		
28. Drive End Wavy Washer/Snap-Ring Other Retention Device?		
29. Drive End Bearing Condition		
30. Opposite Drive End Bearing Number-		
31. Opposite Drive End Bearing Qty.		
32. Opposite Drive End Bearing Type		
33. Opposite Drive End Lubrication Type		
34. Opposite Drive End Bearing Insulation or Grounding Device?		
35. Opposite Drive End Wavy Washer/Snap-Ring Other Retention Device?		
36. Opposite Drive End Bearing Condition		
37. Drive End Seal		
38. Opposite Drive End Seal		
Rotor Inspection		
39. Rotor Type/Material		
40. Growler Test		
41. Number of Rotor Bars		
42. Rotor Condition		
43. List the Parts needed for the Repair Below		
44. Signature of Technician that Disassembled Motor		
Mechanical Fits- Rotor		
45. Shaft Runout		
46. Rotor Runout		
Drive End Bearing Fit	Rotor Body	Opposite Drive End Bearing
47. Coupling Fit Closest to Bearing Housing		
0 Degrees	90 Degrees	120 Degrees
48. Coupling Fit Closest to the end of the Shaft		
0 Degrees	60 Degrees	120 Degrees

49.	Drive End Bearing Shaft Fit		
	0 Degrees	60 Degrees	120 Degrees
50.	Drive End Bearing Shaft Fit Condition		
51.	Opposite Drive End Bearing Shaft Fit		
	0 Degrees	60 Degrees	120 Degrees
52.	Opposite Drive End Bearing Shaft Fit Condition		
53.	Shaft Air Seal Fits		
	Drive End Air Seal	Opposite Drive End Air Seal	
Mechanical Fits- Bearing Housings			
54.	Drive End - Endbell Bearing Fit		
	0 Degrees	60 Degrees	120 Degrees
55.	Drive End - Endbell Bearing Fit Condition		
56.	Opposite Drive End - Endbell Bearing Fit		
	0 Degrees	60 Degrees	120 Degrees
57.	Opposite Drive End - Endbell Bearing Fit Condition		
58.	Bearing Cap Condition		
	Drive End Bearing Cap	Opposite Drive End Bearing Cap	
59.	End Bell Air Seal Fits		
	Drive End Air Seal	Opposite Drive End Air Seal	
60.	List Machine Work Needed Below		
61.	Technician		



STANDARD TERMS AND CONDITIONS FOR PURCHASE OF GOOD AND/OR SERVICES

1. **APPLICABILITY.** The sale of any and all goods and/or services by Mock, Inc. d/b/a Hi-Speed Industrial Service ("Hi-Speed") shall be specifically conditioned upon and subject to the following terms and conditions which are incorporated by reference into any contracts and purchase orders with Hi-Speed, and which shall form and become a part of any agreement related thereto. Buyer's acceptance of any offer or quotation made by Hi-Speed for sale of any goods or services is expressly made subject to the terms and conditions set forth herein and to be so effective, Buyer need not sign or approve these Terms and Conditions to be bound hereunder provided a copy of same is provided to Buyer through any means. None of the terms and conditions contained herein may be added to, expanded, changed, modified, superseded or otherwise altered except as revised in writing and duly executed by Hi-Speed, and all orders received by Hi-Speed shall be governed only by the terms and conditions contained herein, notwithstanding any terms, conditions or provisions of any purchase order, release order, authorization or any other form issued by the Buyer. Hi-Speed hereby objects to any additional, modified, changed, deleted, altered or other terms and conditions not contained herein and notifies Buyer that any such terms or provisions are expressly rejected by Hi-Speed.
2. **PRICE.** All quoted prices shall remain firm and binding for a period of thirty (30) days from the date of quotation or for the period specifically stated in the quotation. The price for any and all goods and/or services ordered or approved by Buyer after thirty (30) days from the date of any quotation are subject to any increase in price that may occur after the expiration of thirty (30) days from the issuance of the quotation and the date the Buyer releases any shipment.
3. **SCOPE OF GOODS AND/OR SERVICES.** The goods and/or services provided by Hi-Speed pursuant to any quotation shall be limited exclusively to those goods and/or services expressly identified therein. Hi-Speed does not assume any responsibility and/or liability for the failure to provide any other goods and/or services not identified in any quotation. Modifications, additions or deletions to or from the scope referenced in any quotation shall only be effective if evidenced in writing and signed by Hi-Speed. The sale of any of all goods and/or services affected by such modification, addition or deletion shall be subject to these same Standard Terms and Conditions whether or not referenced therein.
4. **BILLING AND PAYMENT TERMS.** Hi-Speed shall invoice Buyer for all goods and/or services as same are rendered at the address listed on the quotation. Payments for all goods and/or services shall be due thirty (30) days from the date of the current invoice or as otherwise set forth in the quotation. Late payments are subject to a late fee of 5% of the total invoice amount. Recurring late payments may lead to a deposit requirement on future services or sale of goods. Buyer shall be liable to Hi-Speed for any and all fees and expenses incurred by Hi-Speed to collect any invoices or to enforce these Standard Terms and Conditions, including but not limited to, attorney's fees.
5. **DELIVERY OF GOODS AND/OR SERVICES.** Unless otherwise identified in the quotation, all shipments are F.O.B. Hi-Speed's warehouse and the title to and all risk of loss with respect to any goods shipped shall pass to Buyer when such goods are delivered to the carrier at Hi-Speed's warehouse. Hi-Speed will use its best efforts to affect delivery by the date or dates specified in the quotation. However, Hi-Speed shall not be liable for delay in or failure to make shipment, or to perform services, by any identified date for any reason whatsoever, including but not limited to, causes beyond its reasonable control, such as strikes, fires, floods, epidemics, quarantines, restrictions, severe weather, embargos, acts of God, or public enemy, war, riot, delays in transportation or the inability to obtain necessary labor, materials or manufacturing facilities.
6. **DELIVERY SITE AND TIME FOR PERFORMANCE.** Hi-Speed and Buyer agree that time is of the essence for the purchase order and that Buyer shall fully cooperate with Hi-Speed in order to allow Hi-Speed full access to prosecute its work diligently and in an orderly manner. Buyer shall assist Hi-Speed in every way possible to avoid delaying, disrupting or interfering with the progress of Hi-Speed's work at the project site. In the event Hi-Speed's work is delayed, hindered, suspended, disrupted, re-sequenced or interfered with or rendered less efficient or more costly or adversely affected in any way as a result of acts or omissions of Buyer or other contractors or employees of Buyer or by any other reason beyond Hi-Speed's control and without the fault of Hi-Speed, then, in such event, Buyer shall be liable to Hi-Speed for any damages, additional costs, expenses, labor, materials, man hours, acceleration costs, overtime, additional jobsite overhead, extended home office overhead, and any and all other direct and indirect expenses of whatsoever nature or kind, caused in whole or in part, as a result of any of the above-referenced occurrences. Hi-Speed's project records will be the basis for computing the additional costs and damages of Hi-Speed's labor, materials, expenses and overhead related to such changes. BUYER WARRANTS THAT THE SITE FOR DELIVERY OR INSTALLATION OF ANY GOODS AND/OR FOR THE PERFORMANCE OF ANY SERVICES SHALL BE READY AND ADEQUATE FOR HI-SPEED'S DELIVERY OF GOODS AND/OR PERFORMANCE OF SERVICES AND THAT HI-SPEED SHALL HAVE FULL ACCESS THERETO, FREE OF ALL OBSTRUCTIONS. BUYER SHALL ASSUME ALL EXTRA COSTS ASSOCIATED WITH HI-SPEED'S INABILITY TO INSTALL ANY GOODS OR PERFORM ANY SERVICES AS A RESULT OF BUYER'S FAILURE TO COMPLY WITH THIS PROVISION. HI-SPEED MAY NOT INSPECT THE SITE PRIOR TO DELIVERY AND/OR INSTALLATION OF GOODS AND/OR PERFORMANCE OF SERVICES AND MAKES NO WARRANTY AS TO THE SUFFICIENCY OF THE SITE FOR THE DELIVERY AND/OR INSTALLATION OF GOODS AND/OR THE PERFORMANCE OF SERVICES AT SUCH SITE.
7. **INSPECTION/ACCEPTANCE.** All goods and services ordered pursuant to any quotation shall be subject to inspection by Buyer after delivery or performance to determine conformity with the quotation and/or purchase order and Hi-Speed's advertised or published specifications. Buyer shall have a period of thirty (30) days from shipment of goods at the delivery destination specified in the quotation within which to inspect the goods for conformity with the quotation, order and/or Hi-Speed's advertised and published specifications and to provide Hi-Speed with written notice of any discrepancy or rejection. Buyer shall have a period of thirty (30) days following completion of any services within which to inspect the services for conformity with the quotation, purchase order and/or Hi-Speed's advertised and published specifications and to provide Hi-Speed with written notice of any discrepancy or rejection. If the goods delivered or services performed do not so conform, upon delivery of notice to Hi-Speed of any discrepancy, nonconformance or rejection, Hi-Speed shall have sixty (60) days to cure the alleged discrepancy and/or nonconformance. If Hi-Speed fails to cure in this time period, Buyer shall have the right to reject such goods or services. After the cure period, goods that have been delivered and rejected, in whole or in part, shall be returned to Hi-Speed. Buyer shall notify Hi-Speed and arrange for the return of the goods as required. Should such non-conforming services be rejected Hi-Speed shall, at its sole cost, re-perform the non-conforming services. Inspection or failure to inspect on any occasion shall not affect Buyer's rights under the warranty provisions herein.
8. **WARRANTIES.** Hi-Speed warrants that all goods shall conform in all material aspects to the goods identified in the quotation to Buyer and/or purchase order, and Hi-Speed makes to Buyer the manufacturer's express warranty for any goods sold to Buyer, which is offered by the manufacturer at the time of acceptance of any quotation by Buyer. This warranty is conditioned upon the installation, operation, and maintenance of the goods in accordance with the manufacturer's recommendations and/or standard industry practice and the goods at all times being operated or used under normal operating conditions for which they were designed. Hi-Speed, at its sole option, will repair or

replace any defective or non-conforming goods in accordance with the applicable manufacturer's warranty. Warranty for any defective or incorrect parts is limited to the repair or replacement of those parts. Hi-Speed warrants that all services will conform in all material respects to the description of services identified in the quotation and will be performed in a good and workmanlike manner in accordance with industry practices and standards. Should the services be reasonably rejected or not conform with the foregoing warranties, Hi-Speed shall, at its sole cost, re-perform the defective or nonconforming services. Notwithstanding the foregoing, these warranties do not extend to goods or services to the extent that such goods have been subject to misuse, neglect or abuse not caused by Hi-Speed or have been used in violation of the approved written instructions furnished to Buyer. THE FOREGOING REPRESENTS THE SOLE AND EXCLUSIVE WARRANTY GIVEN BY HI-SPEED WITH RESPECT TO ALL GOODS SOLD AND IS IN LIEU OF ALL OTHER WARRANTIES EITHER EXPRESS OR IMPLIED. HI-SPEED EXPRESSLY DISCLAIMS ALL OTHER WARRANTIES INCLUDING MERCHANTABILITY AND FITNESS FOR A PARTICULAR USE OR PURPOSE. BUYER WAIVES ANY CLAIM THAT THESE EXCLUSIONS OR LIMITATIONS DEPRIVE IT OF AN ADEQUATE REMEDY AT EQUITY OR LAW OR CAUSE THIS AGREEMENT TO FAIL IN ITS ESSENTIAL PURPOSE. BUYER SHALL BE ENTITLED TO NO OTHER REMEDY OTHER THAN AS SET FORTH HEREIN, REGARDLESS OF THE CLAIM OR CAUSE OF ACTION, WHETHER BASED IN CONTRACT, TORT, NEGLIGENCE, GOODS LIABILITY, STRICT LIABILITY OR OTHERWISE.

9. **LIMITATION OF DAMAGES.** HI-SPEED SHALL HAVE NO LIABILITY TO BUYER WITH RESPECT TO THE SALE OR DELIVERY OF ANY GOODS OR THE REPAIR THEREOF OR WITH RESPECT TO THE SALE OR PERFORMANCE OF ANY SERVICES, FOR LOST PROFITS, SPECIAL, CONSEQUENTIAL, EXEMPLARY, PUNITIVE OR INCIDENTAL DAMAGES OF ANY KIND OR NATURE WHETHER ARISING IN CONTRACT, TORT, GOODS LIABILITY OR OTHERWISE, EVEN IF HI-SPEED WAS ADVISED OF THE POSSIBILITY OF SUCH LOSS OR DAMAGES. HI-SPEED SHALL NOT BE LIABLE FOR ANY DAMAGES OR DELAYS CAUSED BY ANY FAILURE TO MAKE ANY DELIVERY OF GOODS BY ANY EXPECTED TIME OR DATE OR THE FAILURE TO PROVIDE OR COMPLETE ANY SERVICES BY ANY EXPECTED DATE OR TIME. IN NO EVENT SHALL HI-SPEED BE LIABLE TO BUYER FOR ANY DAMAGES WHATSOEVER IN EXCESS OF THE TOTAL PRICE PAID FOR ALL GOODS AND/OR SERVICES HEREUNDER OR REFERENCED IN ANY QUOTATION OR THE PURCHASE ORDER.
10. **SEVERABILITY.** The partial or complete invalidity of any provision of these Standard Terms and Conditions shall not affect the enforceability of the remainder of these Standard Terms and Conditions. If any provision is found to be invalid or unenforceable, that portion shall be modified to make it enforceable or shall be stricken and the remainder of these Standard Terms and Conditions shall enforced.
11. **GOVERNING LAW AND JURISDICTION.** Any controversy arising out of any quotation, the purchase order, the goods sold or delivered, repair or replacement thereof, or any services provided pursuant to any quotation or any purchase order, or these Standard Terms and Conditions shall be governed by the laws of the state of Tennessee without regard to any choice of law provisions and any cause of action related in any manner thereto shall be brought only in the state or federal courts of Shelby County, Tennessee.
12. **ABANDONED EQUIPMENT.** Hi-Speed requires that Buyer promptly pick up or provide shipment instructions for Buyer equipment or other Buyer property in Hi-Speed's possession. If equipment or other Buyer property is left with Hi-Speed and not picked up within six (6) months after Hi-Speed's final action related to the applicable property (e.g. evaluation, teardown, estimate, completion of services), Hi-Speed will consider such property abandoned and may dispose of it in accordance with applicable law. Buyer agrees to hold Hi-Speed harmless for any damage or claim for such abandoned property and acknowledges that Hi-Speed may discard or recycle it at Hi-Speed's sole and absolute discretion. Specifically, Hi-Speed may sell Buyer's abandoned property at a private or public sale and retain the proceeds to offset Hi-Speed's storage, inspection and servicing costs. For the avoidance of doubt, Hi-Speed reserves its statutory and other lawful liens for unpaid charges related to abandoned property.
13. **FORCE MAJEURE.** Neither party shall be responsible for any delay or failure in performance of any party of the quotation, purchase order or these Standard Terms and Conditions to the extent that such delays or failures are caused by fire, flood, earthquake, explosion, war, embargo, government requirement, civil or military authority, acts of God, or any other circumstances beyond its reasonable control and not involving any fault or negligence on the party affected ("Condition"). If any such Condition occurs, the party delayed or unable to perform shall promptly give written notice to the other party and, if such Condition remains at the end of thirty (30) days, the party affected by the other party's delay and inability to perform may elect to (i) terminate such order or part thereof, or (ii) suspend the order for the duration of the Condition, if the Buyer is the suspending party, buy elsewhere comparable material to be sold under the order and apply to any commitment the purchase price of such purchase, and resume performance of the order once the Condition ceases, with an option in the affected party to extend the period of this order up to the length of the time the Condition endures.
14. **NONWAIVER.** No course of dealing or failure of either party to strictly enforce any term, right, or condition of these Standard Terms and Conditions will be construed as a waiver of such term, right or condition. Any waiver by Hi-Speed will only be in writing and will waive no succeeding breach of a term, right or condition.
15. **ASSIGNMENT.** The rights and obligations of the parties shall neither be assigned nor delegated without the prior written consent of the other party. However, any party may assign or delegate its respective rights and obligations, in whole or in part, (i) to any subsidiary, (ii) pursuant to other financing, merger or reorganization or (iii) pursuant to any sale or transfer of substantially all of the assets of the assigning party. These Standard Terms and Conditions shall bind the heirs, successors and assigns of the parties hereto.
16. **NO INDIVIDUAL LIABILITY.** Notwithstanding any other agreement to the contrary, the Buyer agrees that in no event will the Buyer hold and Hi-Speed owner, director, officer or employee personally liable for unintentional tortious conduct or conduct that constitutes the breach of any contract between Hi-Speed and the Buyer, even if the Hi-Speed owner, director, officer or employee is or could be construed to be a party to such contract.