



EverCompound  
Olive Branch, MS  
June 2022 Infrared  
Thermography Report

All electrical panels were scanned using a  T865 infrared camera. The following report only contains defects that were found during the survey. Below is our classification system for each defect included in this report. If there are any questions or comments, please feel free to contact us at any time.



employs a three-tier defect rating system:

**CLASS I:** A defect or defects are present that are likely to cause a problem in the long term (2-6 months). Should be addressed in the normal course of maintenance scheduling.

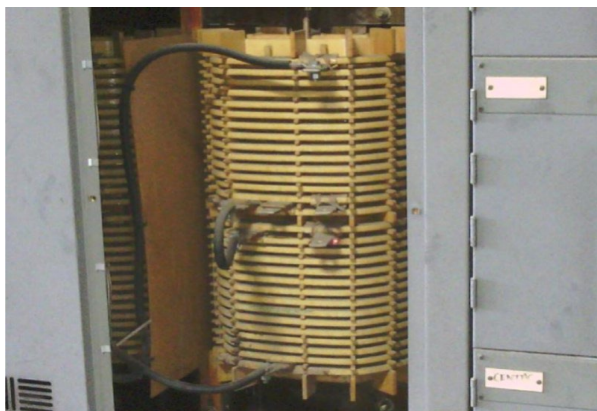
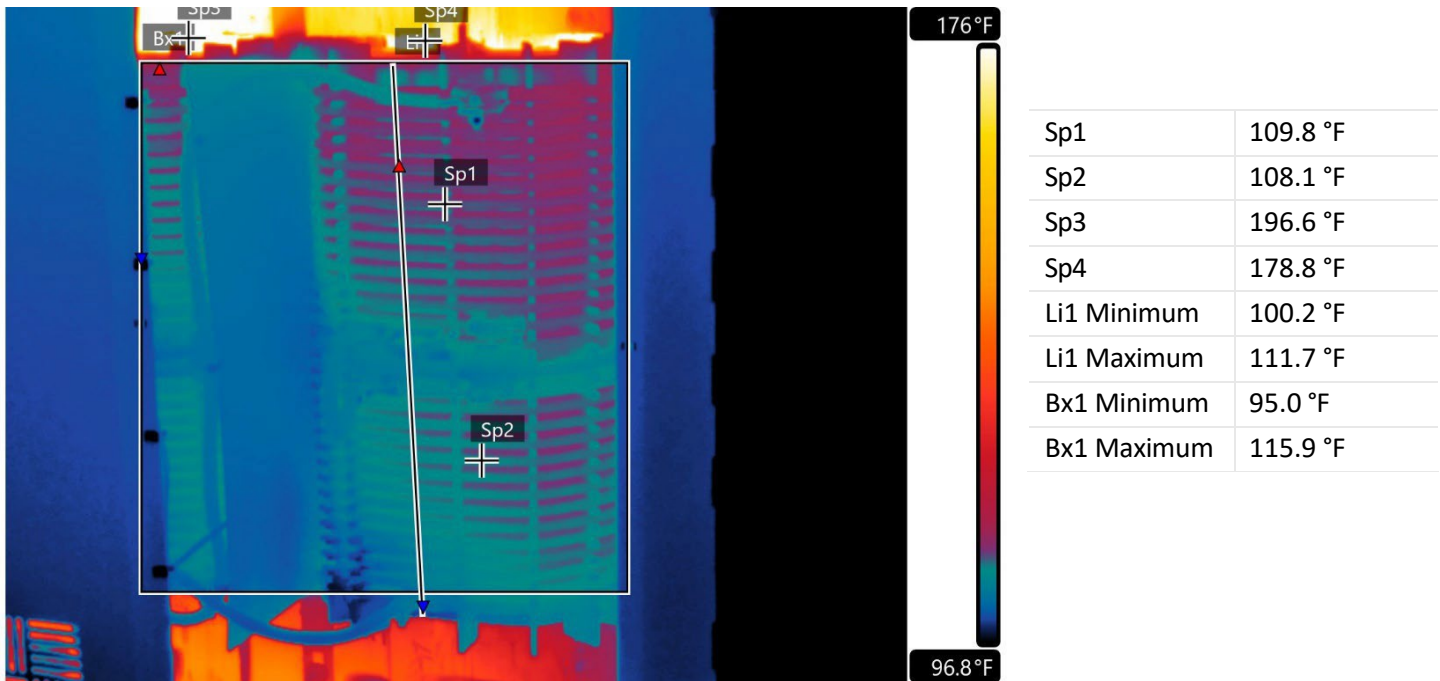
**CLASS II:** A defect or defects are present that are likely to cause a failure in the short term (less than 2 months). Should be addressed as soon as practical, on a high maintenance priority. Consideration should be given to increase monitoring frequency.

**CLASS III:** A defect or defects are present that make continued component reliability unpredictable and likelihood of secondary damage is high. Consideration should be given to an unscheduled shutdown to correct.



*tests and inspects industrial machinery and equipment and makes recommendations concerning maintenance and repairs based on its experience in the field of industrial repair and maintenance. The information contained herein is provided as an opinion only, not as a guaranty or warranty of the matters discussed herein.*

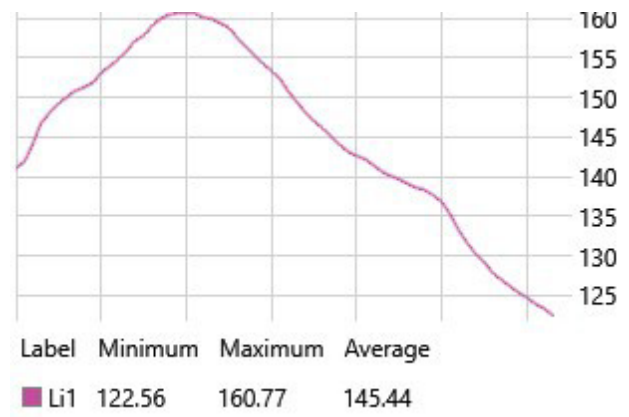
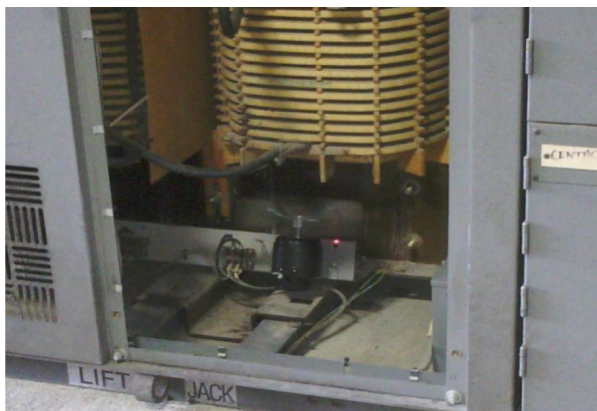
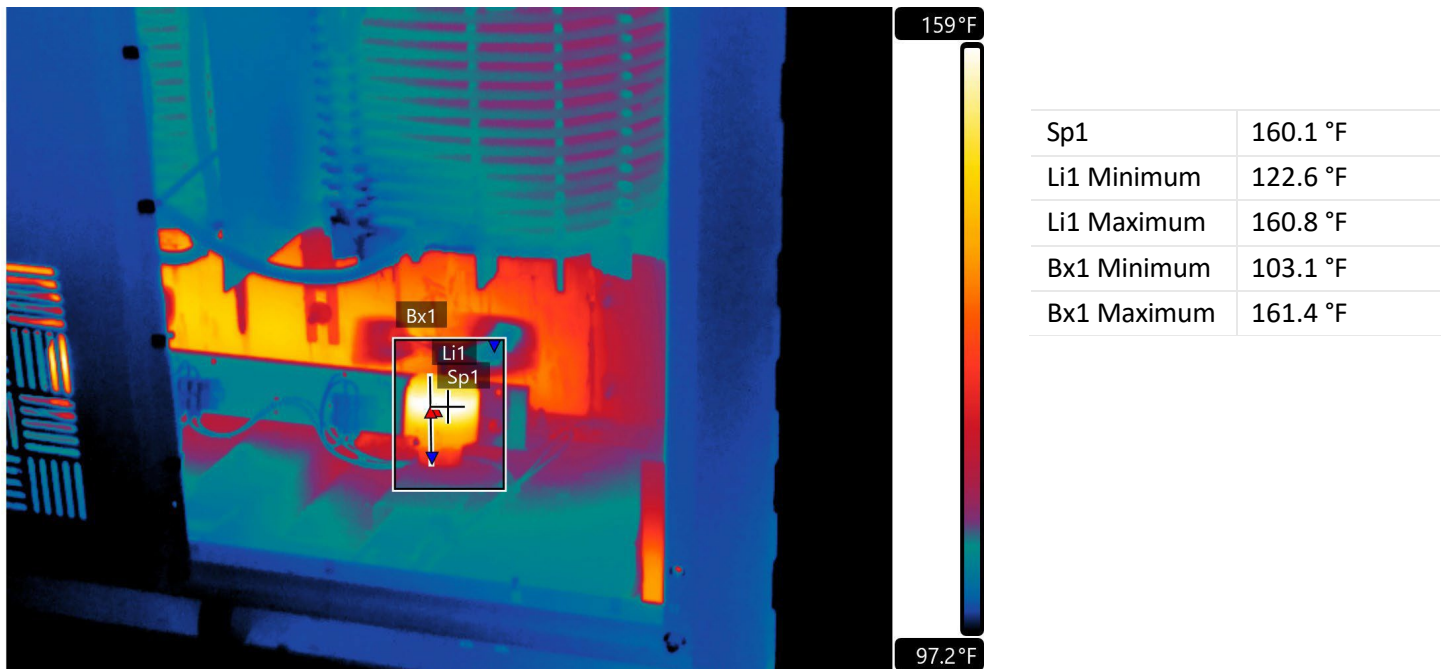
Component	Transformer
Equipment/Bucket ID	Outside Switch Gear Room



Fault	None (Info Only)
Defect Rating	None

Recommendations	IR image taken shows temps of transformer coils. No issues found. Info only.
-----------------	--

Component	Cooling Fan Motor
Equipment/Asset ID	Transformer Panels in Switchgear Room

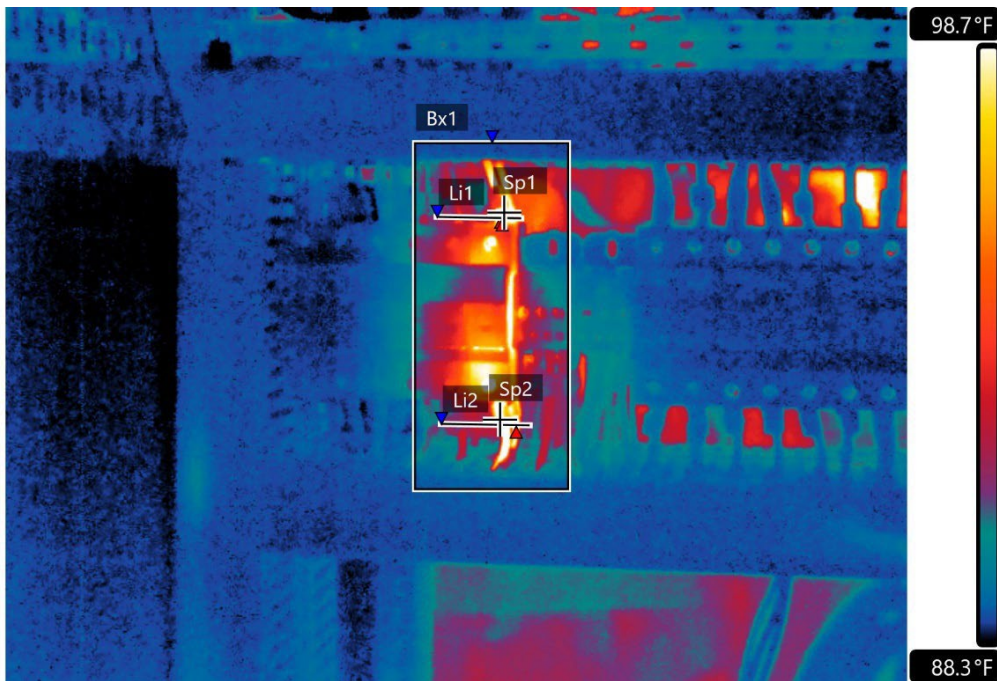


Fault	None (Info Only)
Defect Rating	None

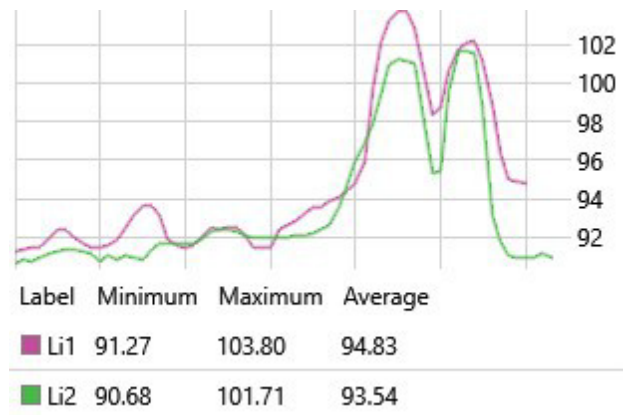
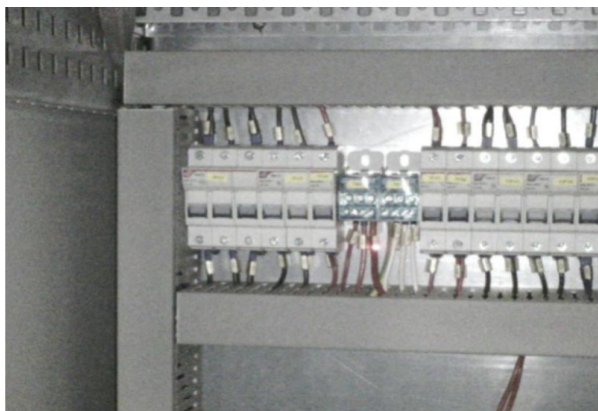
Recommendations
IR Image shows temp of cooling fan motor. Info only. All other fans seemed to be operating around this temp.



Component	F7U4 Fuse
Equipment/Bucket ID	L1.250.Q2 Cabinet



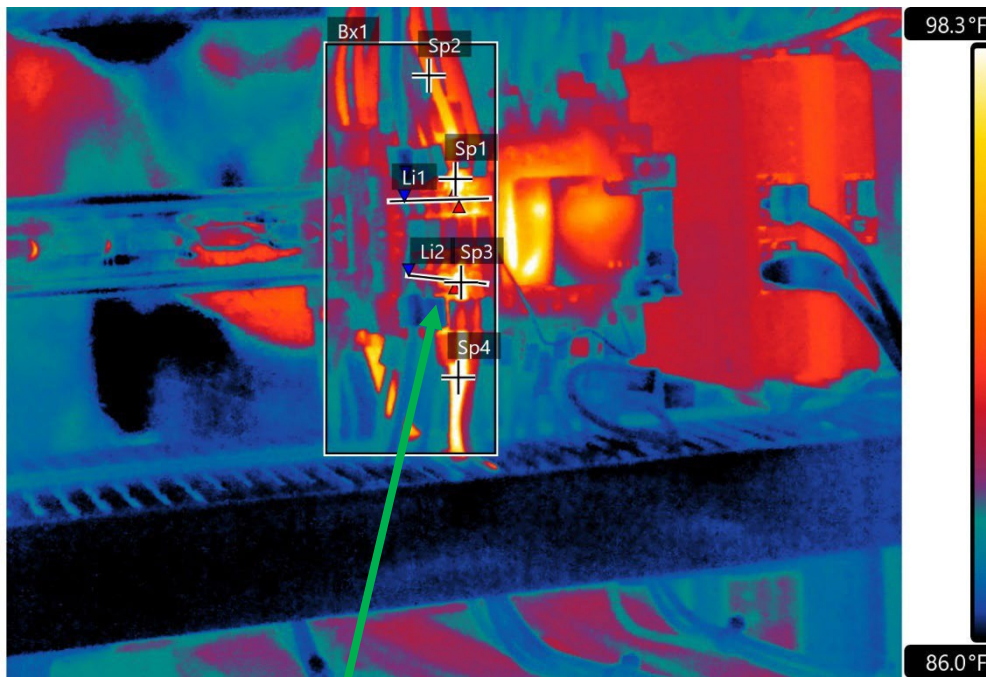
Sp1	97.6 °F
Sp2	99.1 °F
Li1 Minimum	91.3 °F
Li1 Maximum	103.8 °F
Li2 Minimum	90.7 °F
Li2 Maximum	101.7 °F
Bx1 Minimum	88.4 °F
Bx1 Maximum	104.5 °F



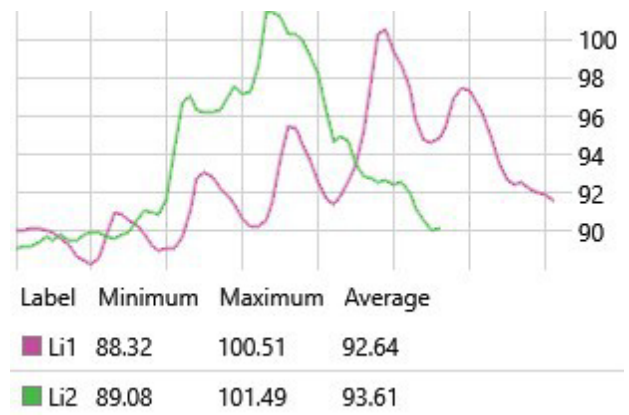
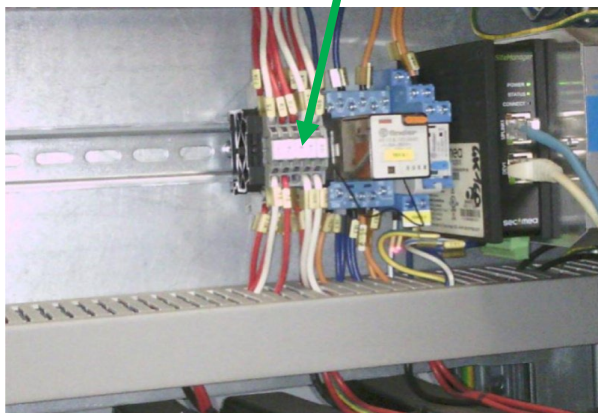
Fault	Faulty Fuse/Connection issue
Defect Rating	<b>CLASS I</b>

Recommendations	Fuse labeled F7U4 appears to have excessive heat un fuse body and at lead connections. Inspect/repair as needed as scheduling allows. Ensure all connections are tight.
-----------------	---

Component	First Cabinet From Left (lead connections)
Equipment/Bucket ID	L1.MX2.Q2



Sp1	99.3 °F
Sp2	94.0 °F
Sp3	99.9 °F
Sp4	98.9 °F
Li1 Minimum	88.3 °F
Li1 Maximum	100.5 °F
Li2 Minimum	89.1 °F
Li2 Maximum	101.5 °F
Bx1 Minimum	86.1 °F
Bx1 Maximum	102.4 °F

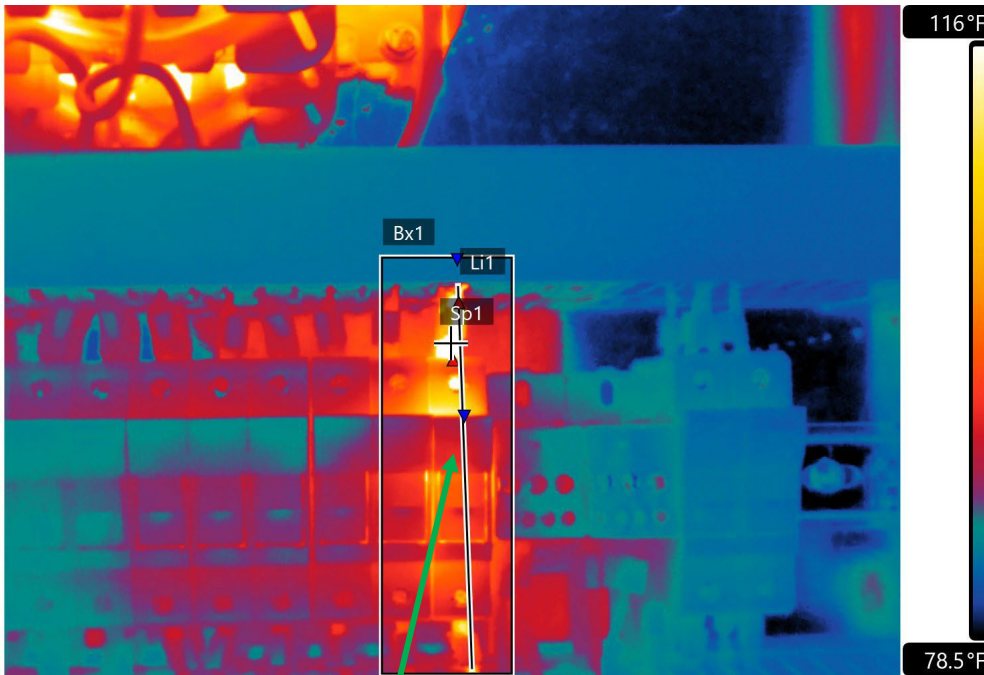


Fault	Lead connection issue
Defect Rating	<b>CLASS I</b>

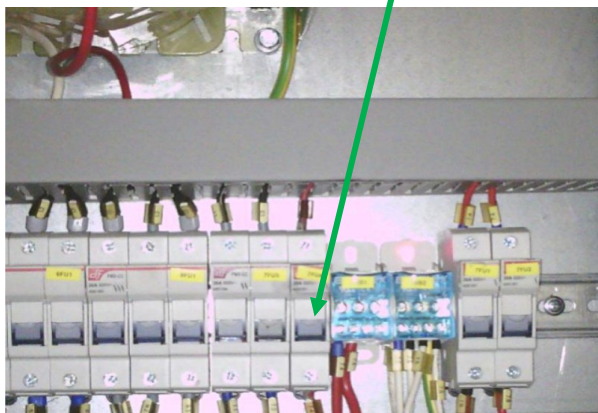
Recommendations	Lead connections show high temps at connections. Check connections ensuring a clean tight connection. Inspect as scheduling allows.
-----------------	---



Component	Fuse
Equipment/Bucket ID	L2.160.Q1 (third cabinet from left)



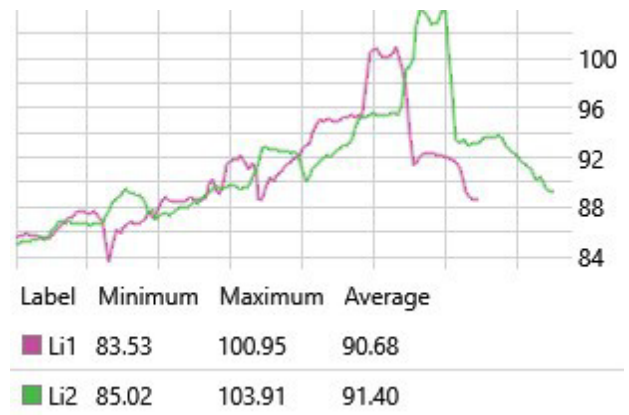
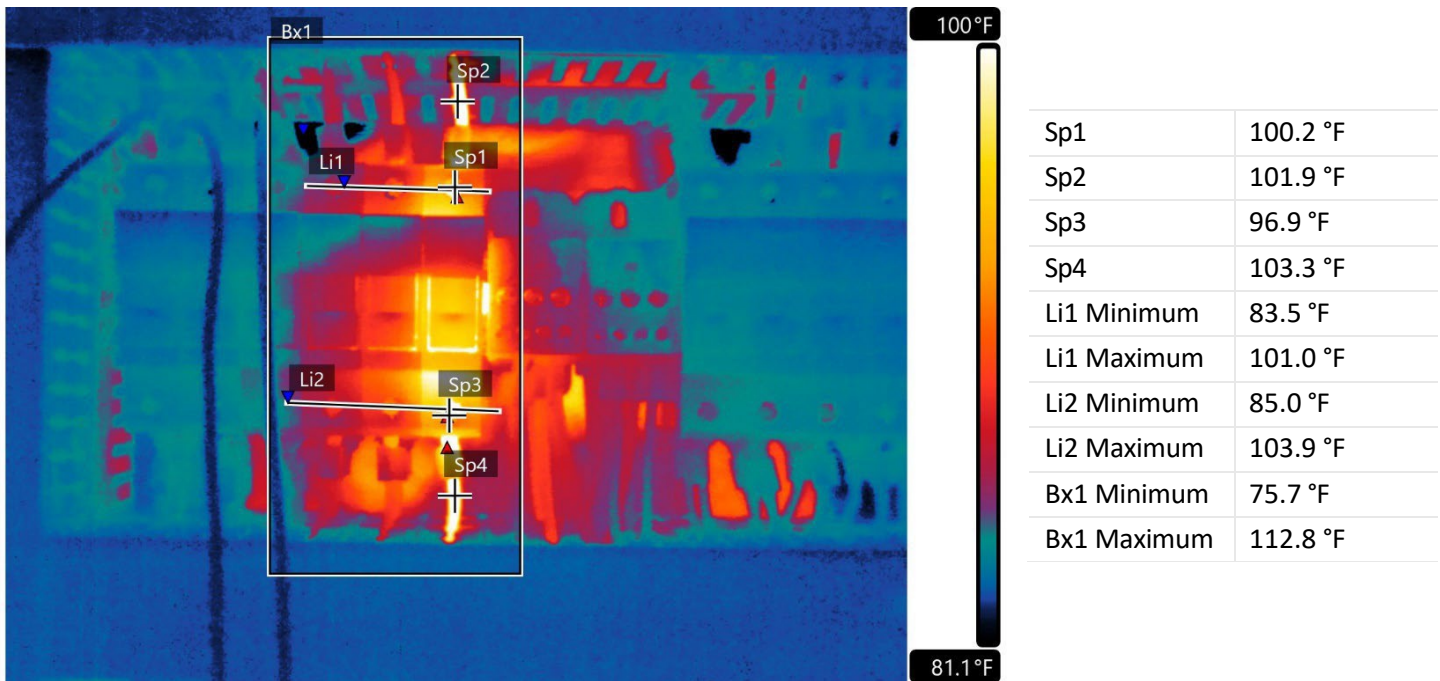
Sp1	130.6 °F
Li1 Minimum	89.7 °F
Li1 Maximum	117.9 °F
Bx1 Minimum	82.9 °F
Bx1 Maximum	133.8 °F



Fault	Connection issue/Fuse issue
Defect Rating	<b>CLASS II</b>

Recommendations	IR image suggests that the top lead connection may be the issue here. Inspect and clean/tighten connection soon. Fuse may also be weak or heavily loaded.
-----------------	---

Component	Small fuse
Equipment/Bucket ID	L2.MX1.Q1 (first cabinet from left)

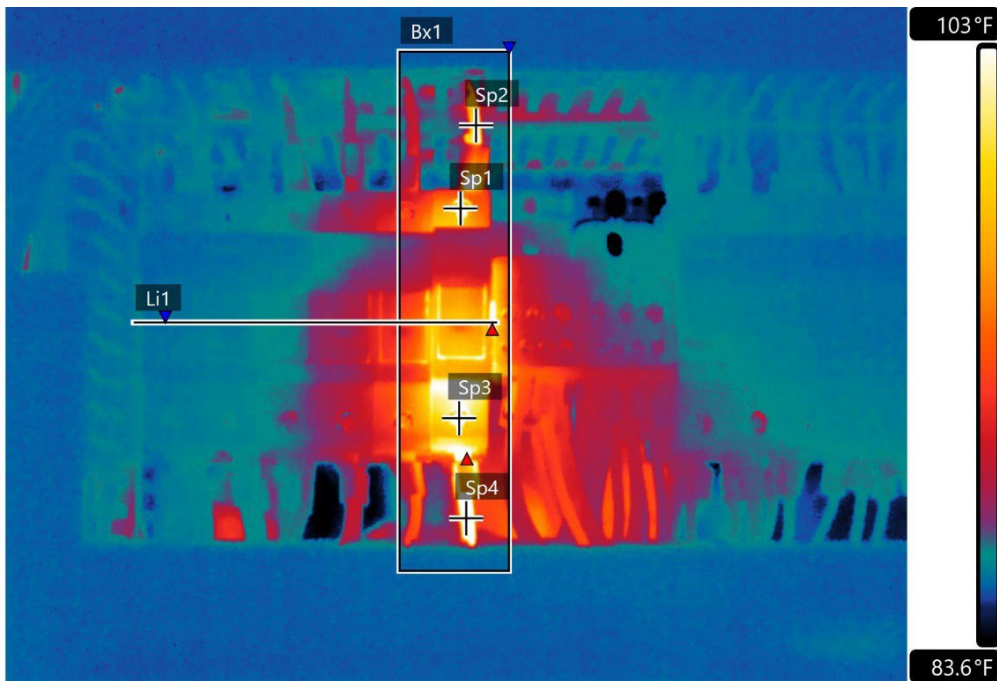


Fault	Loose connection/fuse issue/heavy load
Defect Rating	<b>CLASS I</b>

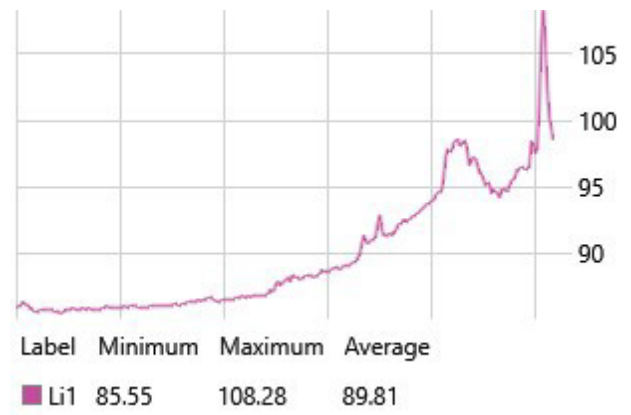
Recommendations	IR image indicates that the lead connections to the fuse body have issues. Inspect and clean/tighten connection soon. Fuse may also be weak or heavily loaded.
-----------------	--



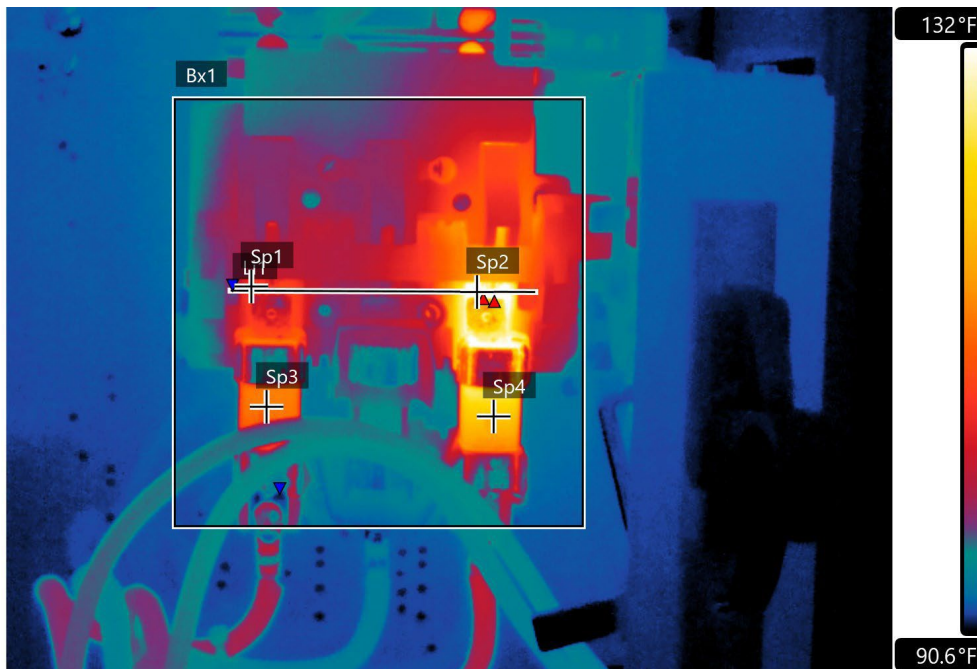
Component	Fuse/Connections(first cabinet from left)
Equipment/Bucket ID	L2.MX2.Q1



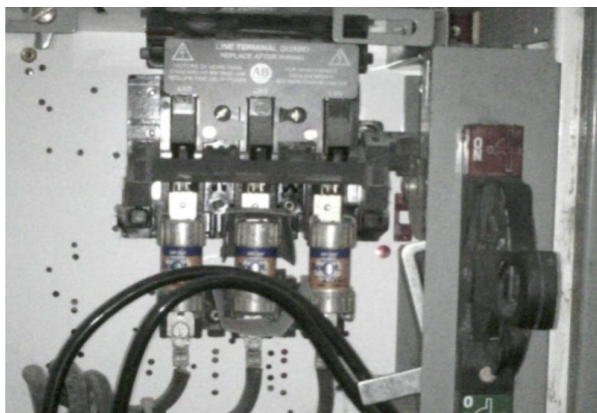
Sp1	102.5 °F
Sp2	99.9 °F
Sp3	106.6 °F
Sp4	106.7 °F
Li1 Minimum	85.6 °F
Li1 Maximum	108.3 °F
Bx1 Minimum	85.2 °F
Bx1 Maximum	115.3 °F



Component	Fuse/Clip
Equipment/Bucket ID	MCC-30/Production Office Panel



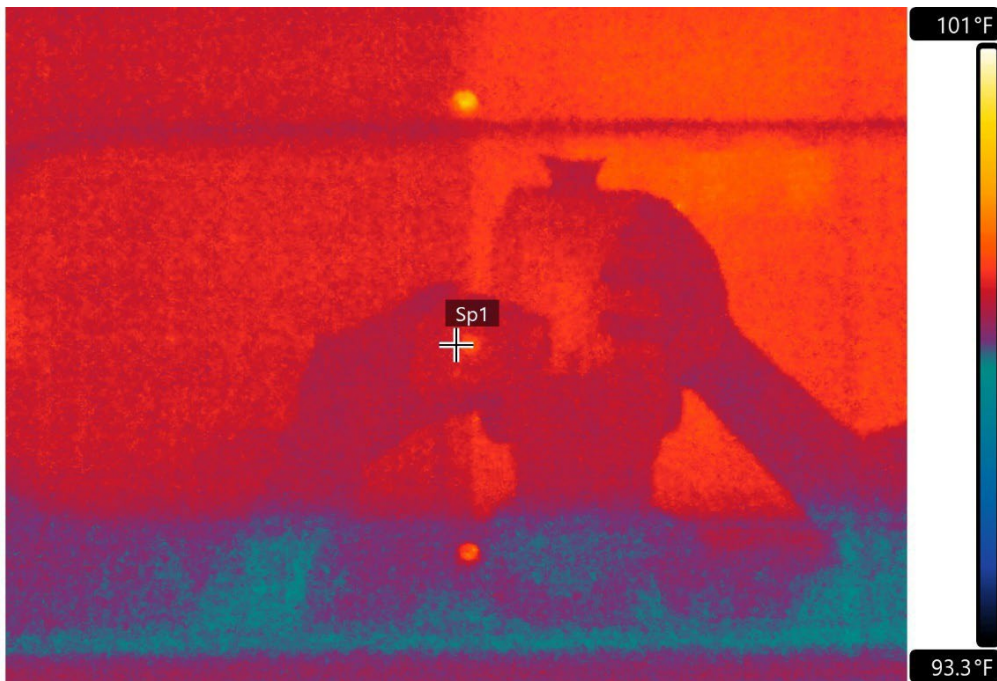
Sp1	108.0 °F
Sp2	131.6 °F
Sp3	113.5 °F
Sp4	119.8 °F
Li1 Minimum	97.9 °F
Li1 Maximum	135.8 °F
Bx1 Minimum	91.1 °F
Bx1 Maximum	136.8 °F



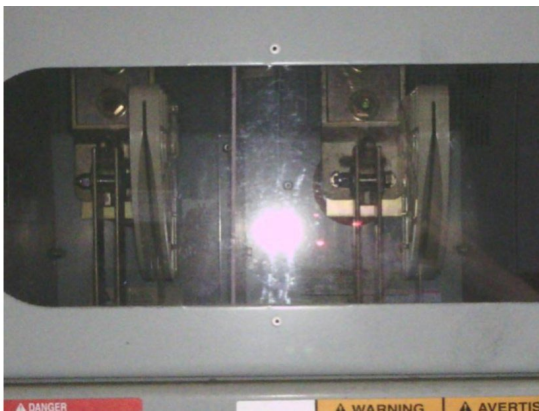
Fault	Loose fuse connection/Clip issue
Defect Rating	<b>CLASS II</b>

Recommendations	Fuse and or clip appear to have issues. Inspect fuse and clip ensuring a good clean and tight connection. Replace part as needed.
-----------------	---

Component	Info Only
Equipment/Bucket ID	Switch gear windows



Sp1	97.7 °F
Lines	-
Areas	-

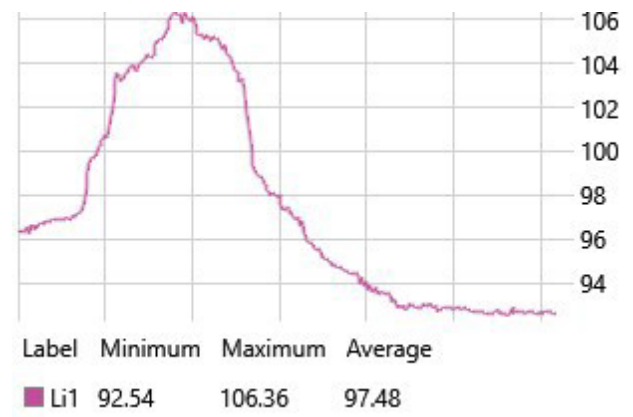
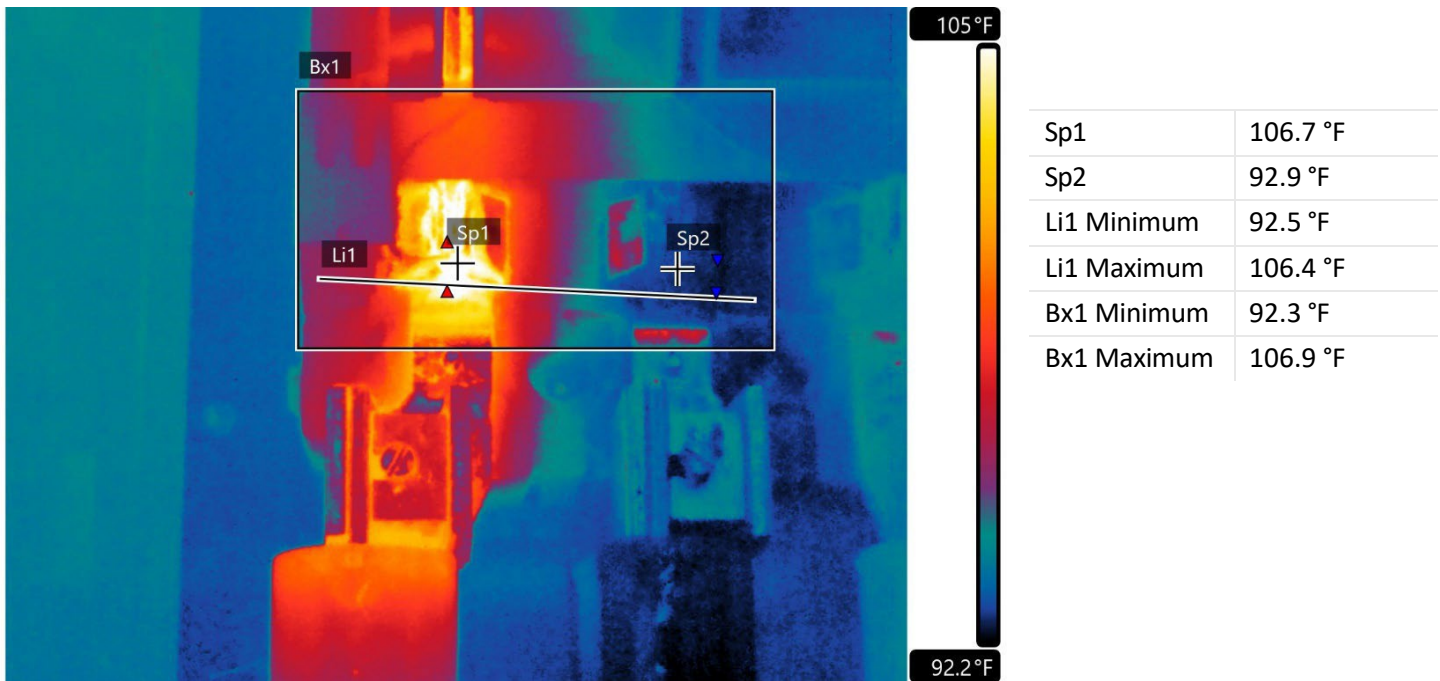


Fault	Info only
Defect Rating	none

Recommendations
IR image is just to show that IR can not be detected through acrylic cover lens for switchgear. Need true IR windows installed to see through cabinet.



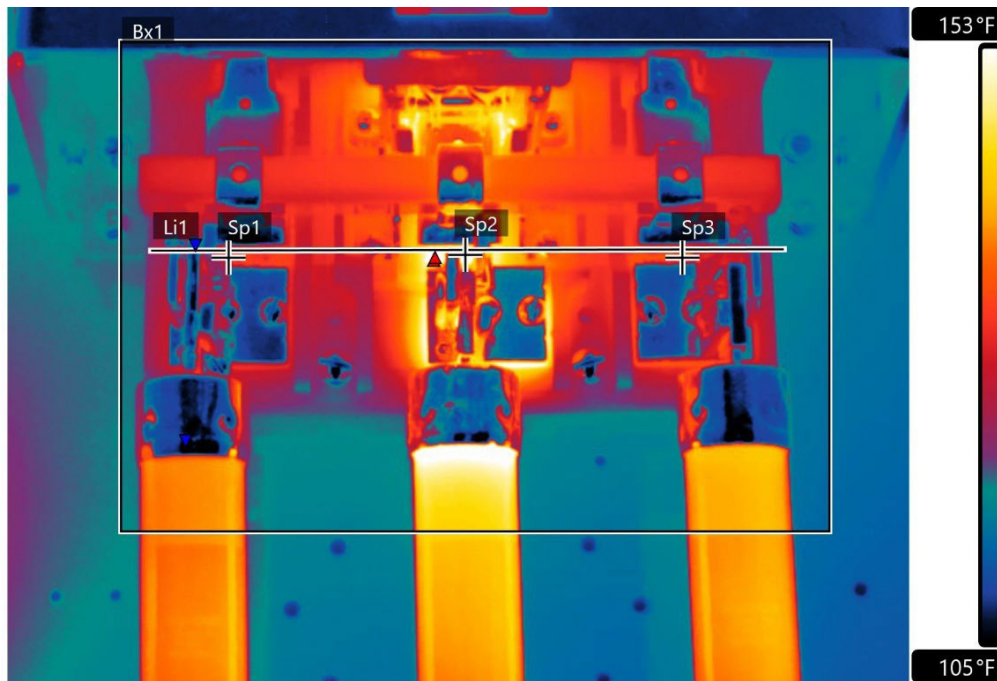
Component	Fuse knife components
Equipment/Bucket ID	PDC-10 /Panel M1



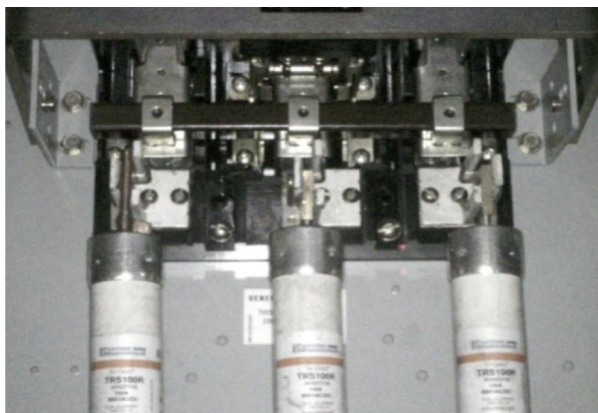
Fault	Dirty/loose knife components
Defect Rating	<b>CLASS I</b>

Recommendations	Fuse knife switch likely has issue with the A phase switch components. Inspect/repair as needed and as time allows.
-----------------	---

Component	B phase Fuse knife components
Equipment/Bucket ID	Line 1 480V from DPI



Sp1	133.4 °F
Sp2	156.6 °F
Sp3	135.1 °F
Li1 Minimum	108.7 °F
Li1 Maximum	156.9 °F
Bx1 Minimum	98.8 °F
Bx1 Maximum	160.1 °F



Fault	Fuse knife issue
Defect Rating	<b>CLASS II</b>

Recommendations	Fuse knife switch likely has issue with the B phase switch components. Inspect/repair as needed and as time allows.
-----------------	---



This concludes our survey . Please feel free to contact us for any questions or comments.

Thank you for your business,

*Kerion W. Maxwell*



ITC Certified Level II Infrared Thermographer

(901) 486-4565

[kwilliam@gohispeed.com](mailto:kwilliam@gohispeed.com)