

D.C. Motor Maintenance Inspection Form

Job#: 94379

Date: 22 December 2017

Customer : Bridgestone

Machine: #1 Extruder

Manufacturer: Reliance

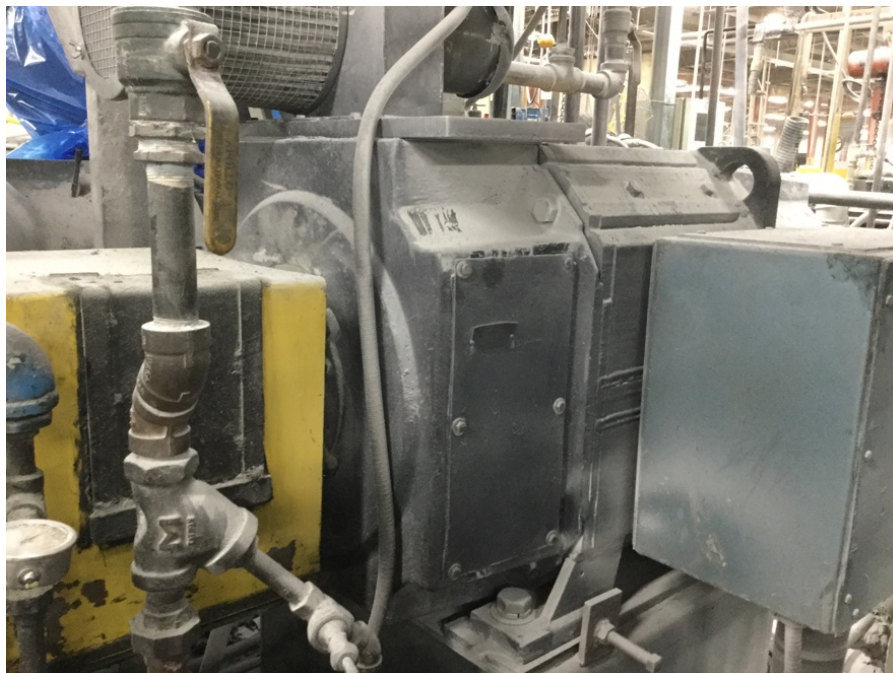
Hp/kw: 400 ☒ Hp ☐ Kw

RPM: 150/2300

Frame: 3587ATZ

Model #:

Serial #: T58R003A



Internal visual appearance :

Dusty

Internal photo



Internal photo



Brushes :

50%

No. Of Brushes:

12

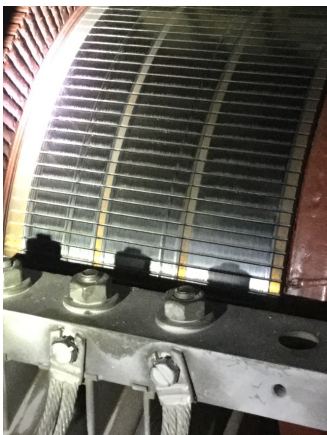
Brush Holders:

Good

Brush Springs:

Good

Brush holder



Brush photo

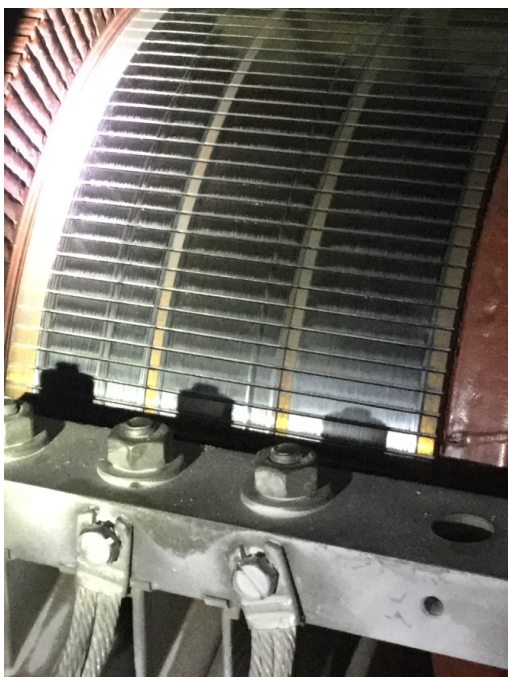


Commutator : Good Mild wear

Stoned Com: ☐ Yes ☒ No

Comments : Commutator looks good it has a couple grooves worn on it that have been there on previous inspections. Also there is some trailing edge burning on the commutator bars. This is typically caused by a light load or by contamination getting between the commutator and brushes

Commutator



Commutator



Motor Evaluation :

The motor has some dust inside but overall it looked good.
Brushes still have good life left on them.

Technician :

Lynn McDonald

