

## D.C. Motor Maintenance Inspection Form

Job#:

Date:

22 December 2017

Customer :

Bridgestone

Machine:

#2 Extruder

Manufacturer:

Reliance

Hp/kw:

700



Hp



Kw

RPM:

1150

Frame:

3687ATZ

Model #:

Serial #:



Internal visual appearance :

Dusty

Internal photo



Internal photo



Brushes :

50%

No. Of Brushes:

20

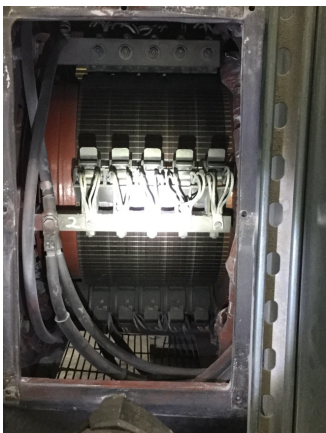
Brush Holders:

Good

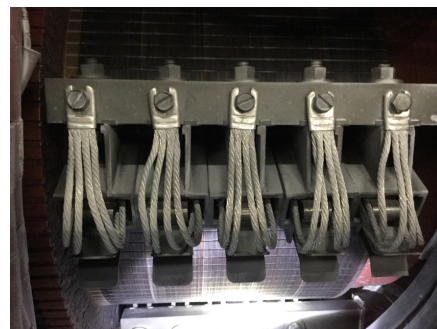
Brush Springs:

Good

Brush holder



Brush photo

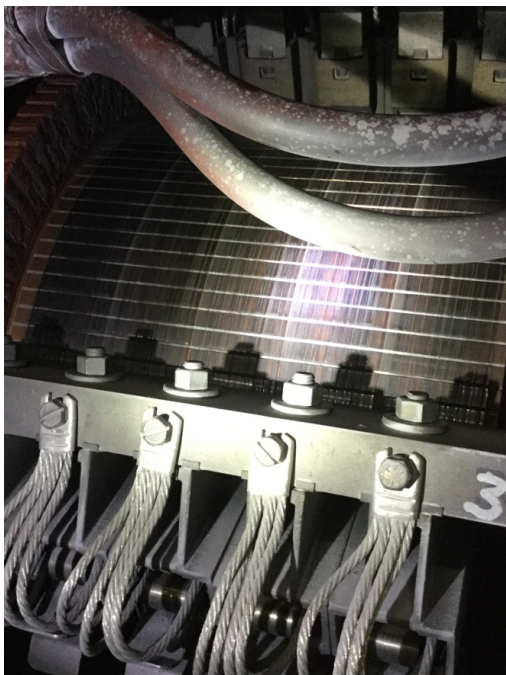


Commutator : Fair show unevenness

Stoned Com: ☐ Yes ☒ No

Comments : Commutator has some "treading" on the surface. This has been present since previous inspections.

Commutator



Commutator



Motor Evaluation :

Motor has dust inside but overall it looks good. Brushes looked good but we will probably have to change them on the next inspection

Technician :

Lynn McDonald

A handwritten signature in black ink, reading "Lynn McDonald", written over a horizontal line.