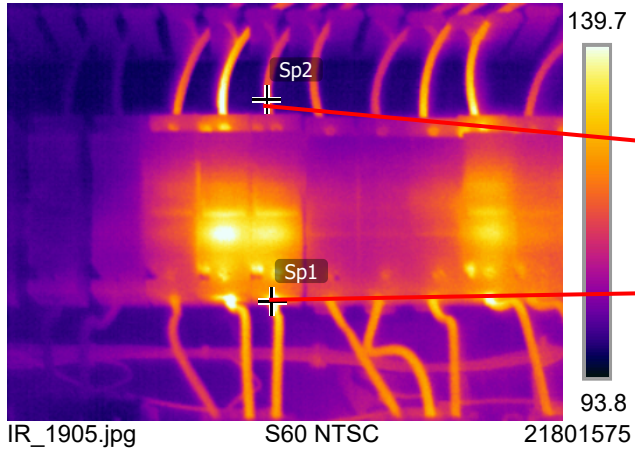
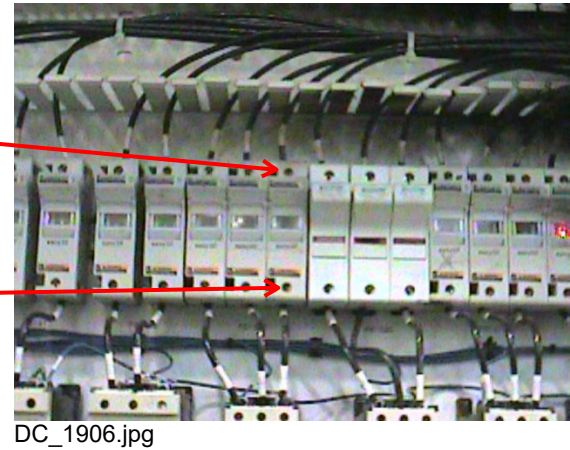


8/11/2021 7:42:39 AM



8/11/2021 7:42:48 AM



Measurements

Sp1	151.7 °F
Sp2	122.6 °F

Parameters

Emissivity	0.95
Refl. temp.	49 °F

Infrared data indicates a high resistance connection on the line side of phase B. The data also shows that the load side of the fuse is overheating. Replace the fuse and clean the fuse holder with sandpaper. Check the wire for damage. Replace if necessary, and repair as necessary tighten to proper torque.