

Infrared Thermography Report

IFF-Solae

Memphis, TN

All electrical panels were scanned using a  infrared camera. The following report only contains defects that were found during the survey. Below is our classification system for each defect included in this report. If there are any questions or comments, please feel free to contact us at any time.



employs a three-tier defect rating system:

CLASS I: A defect or defects are present that are likely to cause a problem in the long term (2-6 months). Should be addressed in the normal course of maintenance scheduling.

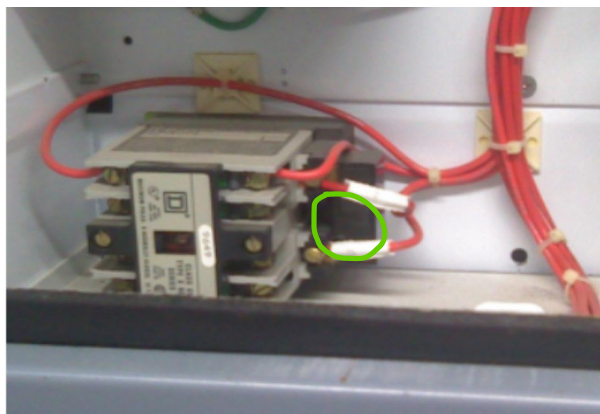
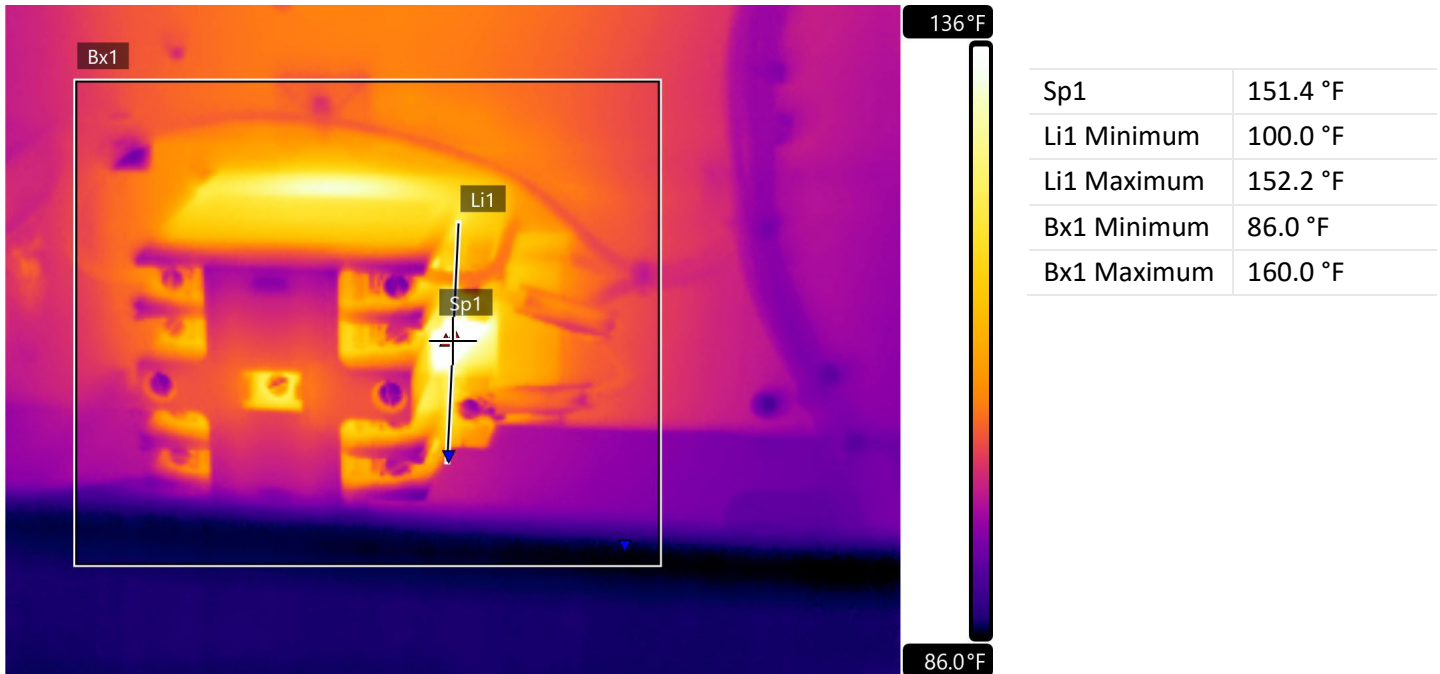
CLASS II: A defect or defects are present that are likely to cause a failure in the short term (less than 2 months). Should be addressed as soon as practical, on a high maintenance priority. Consideration should be given to increase monitoring frequency.

CLASS III: A defect or defects are present that make continued component reliability unpredictable and likelihood of secondary damage is high. Consideration should be given to an unscheduled shutdown to correct.



tests and inspects industrial machinery and equipment and makes recommendations concerning maintenance and repairs based on its experience in the field of industrial repair and maintenance. The information contained herein is provided as an opinion only, not as a guaranty or warranty of the matters discussed herein.

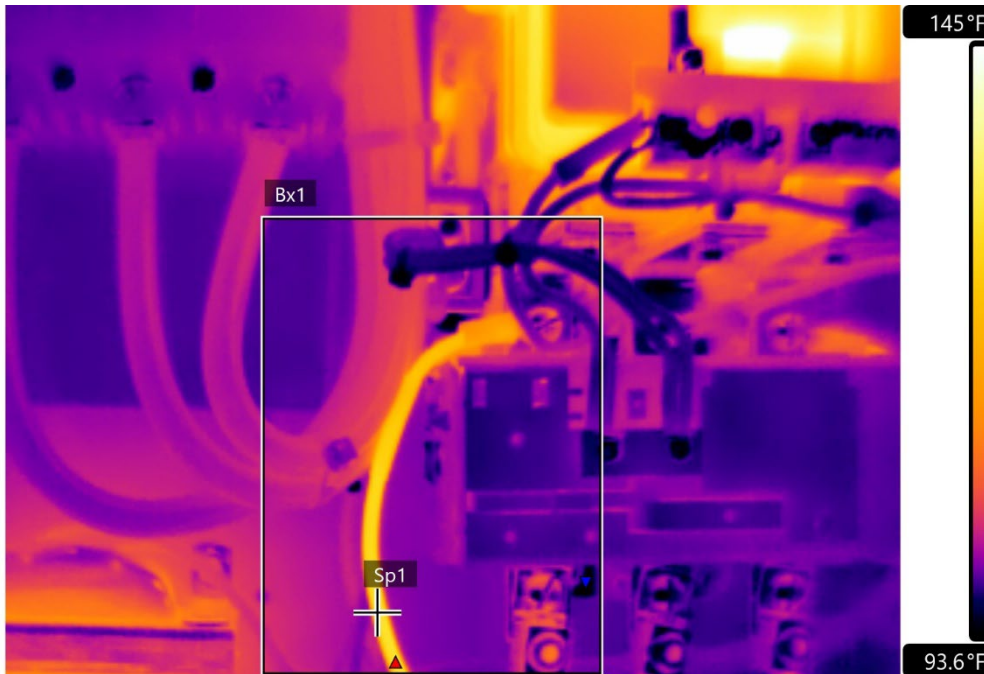
Component	Breaker
Equipment/Bucket ID	223FH PV-3471 Vacuum Pump



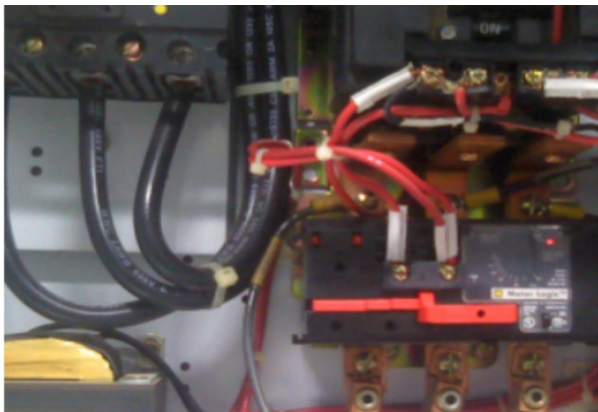
Fault	Possible loose connection or breaker issue
Defect Rating	CLASS I

Recommendations	Hard to see what it hot here. Check connection towards back of breaker. Heat may from breaker itself.
-----------------	---

Component	Lead wire
Equipment/Bucket ID	243BF BL-8084 Baghouse Blower #5



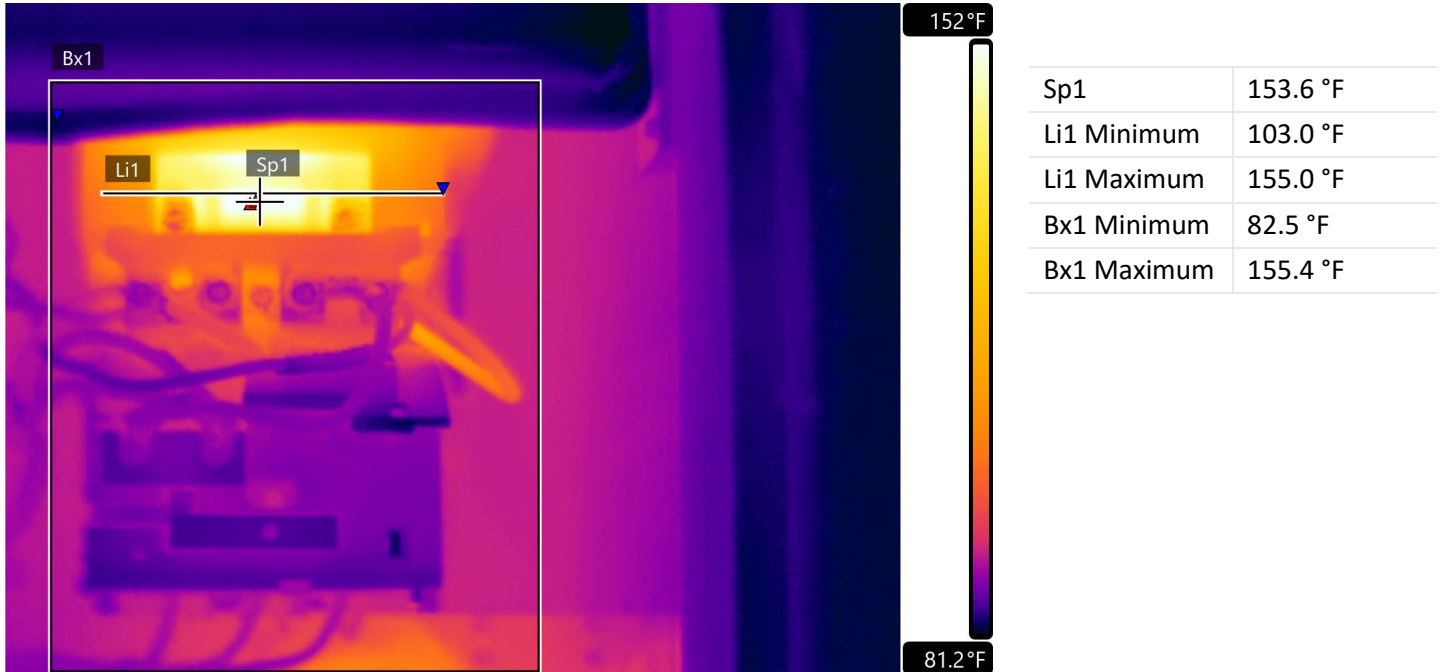
Sp1	131.1 °F
Lines	-
Bx1 Minimum	91.7 °F
Bx1 Maximum	131.5 °F



Fault	Loaded circuit
Defect Rating	CLASS I

Recommendations
Looks like lead has heavy load. Check current on lead and ensure wire is sized correctly for load.

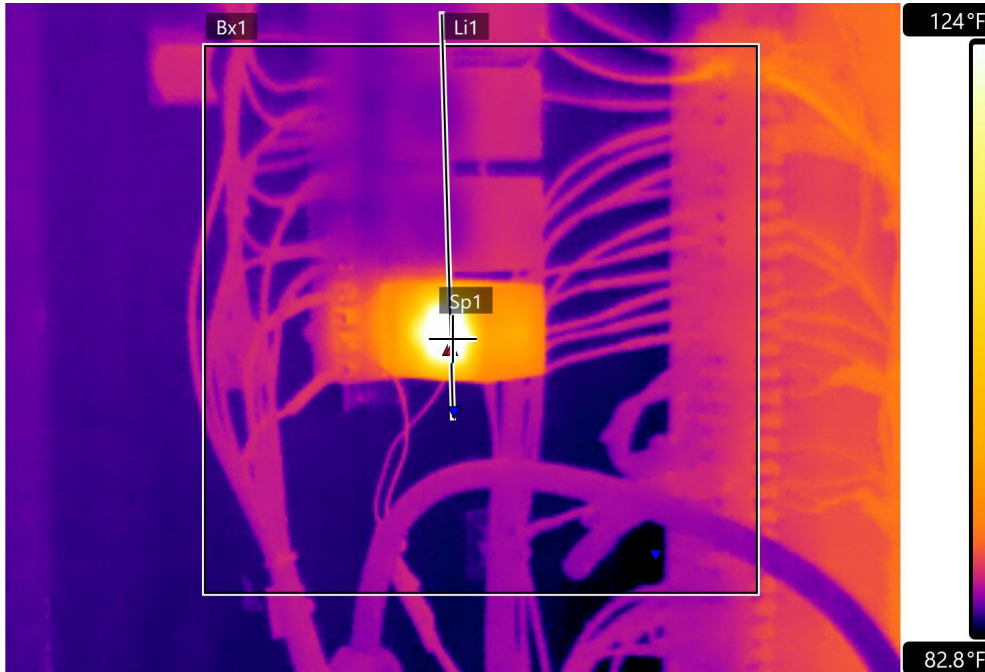
Component	Contactor
Equipment/Bucket ID	252FX RV-8038 CMC Cyclone #3 Fines Handling Rotary Valve



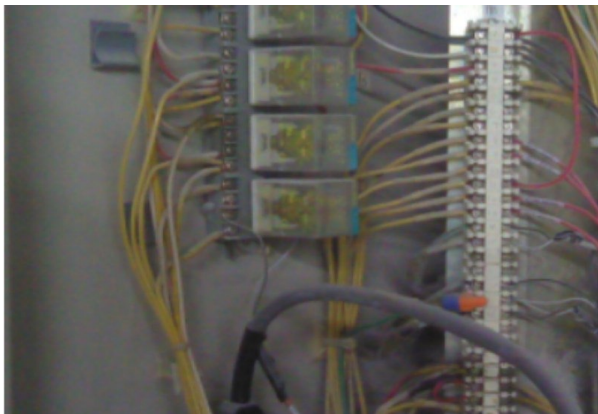
Fault	Possible load/connection issue
Defect Rating	CLASS I

Recommendations	Top side has highest temp. Could be a weak or loaded component. Inspect load and replace as needed.
-----------------	---

Component	
Equipment/Bucket ID	#3 214 FN MS2P SSMG #3



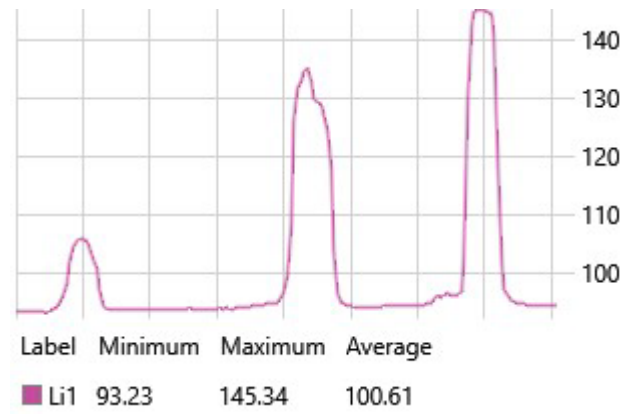
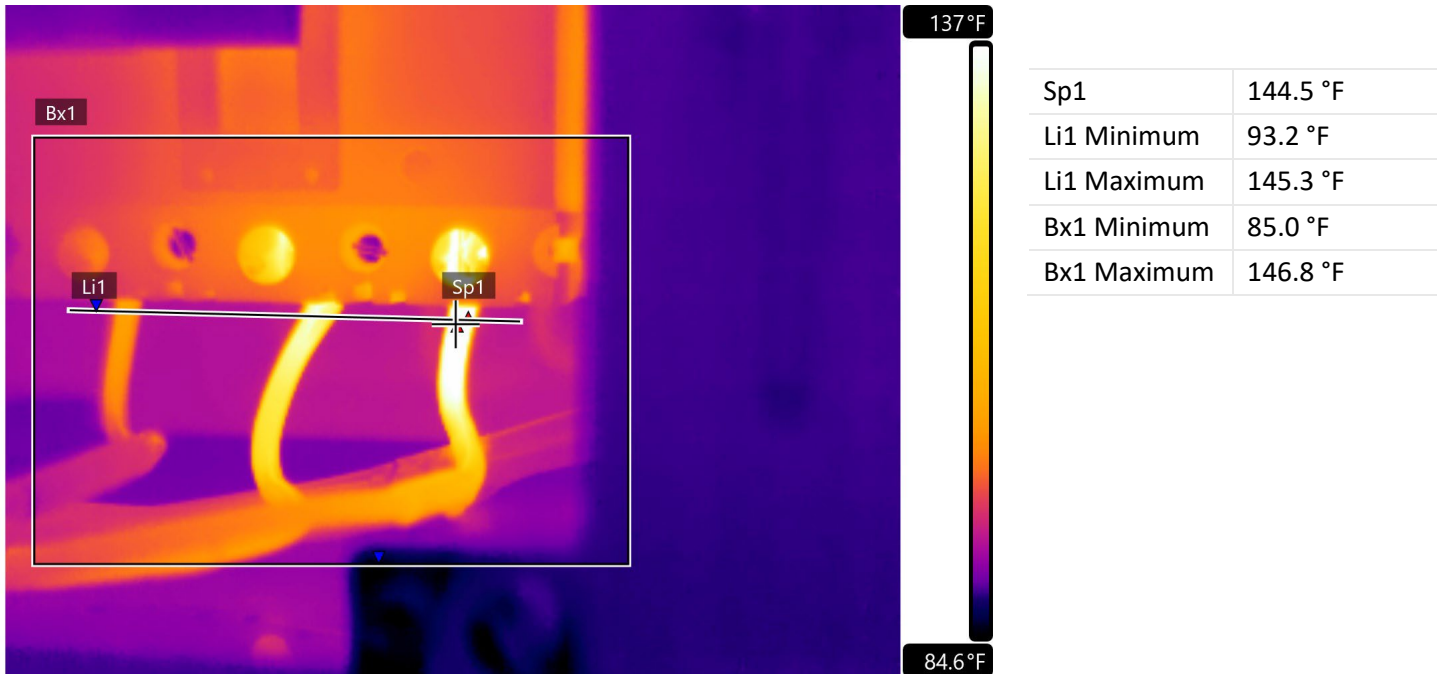
Sp1	133.0 °F
Li1 Minimum	83.9 °F
Li1 Maximum	133.3 °F
Bx1 Minimum	82.4 °F
Bx1 Maximum	133.3 °F



Fault	Faulty/Heavy loaded circuit
Defect Rating	CLASS II

Recommendations	Either has heavy load or internal issue. Replace as needed.
-----------------	---

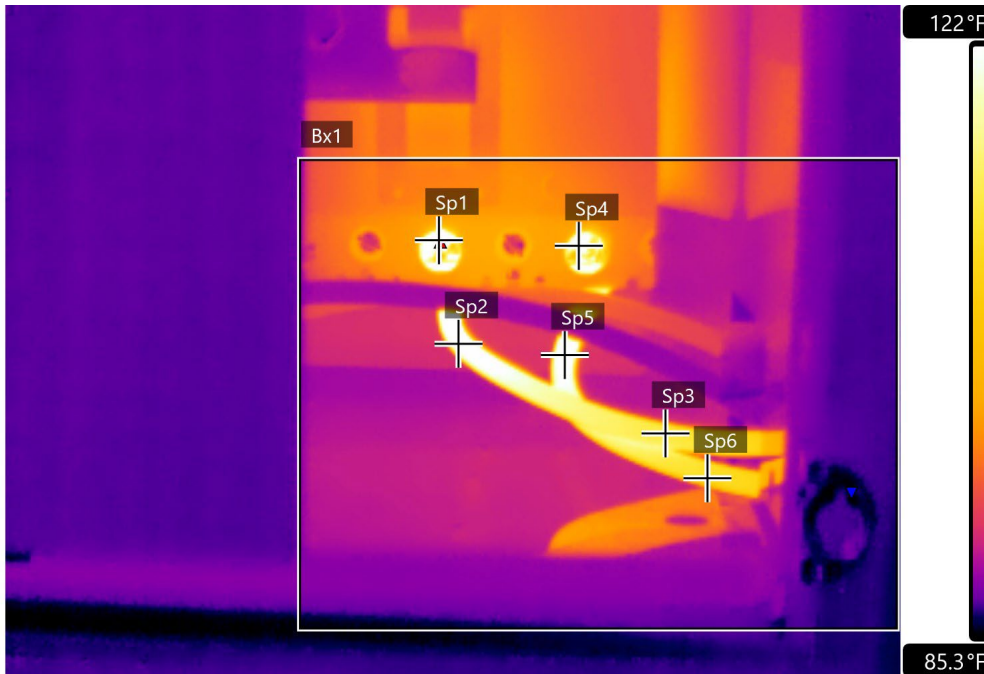
Component	Lead Connection
Equipment/Bucket ID	151BXL Air Handling Unit 1/O Room



Fault	Loose/faulty connection
Defect Rating	CLASS I

Recommendations	Likely a loose or faulty connection. Ensure a tight and clean connection.
-----------------	---

Component	Lead connections			
Equipment/Bucket ID	MS2P Roof MCC Room	T-AP103	171BTR	10KVA Transformer



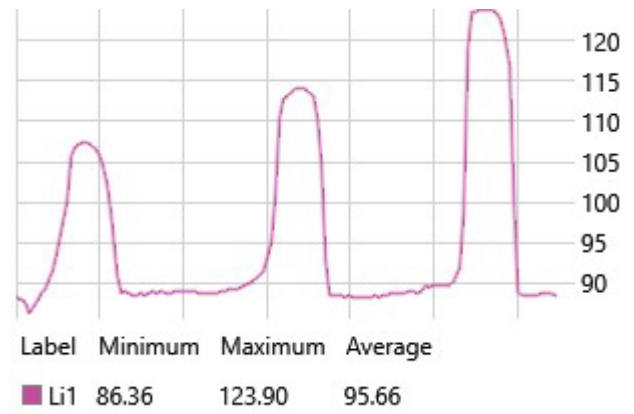
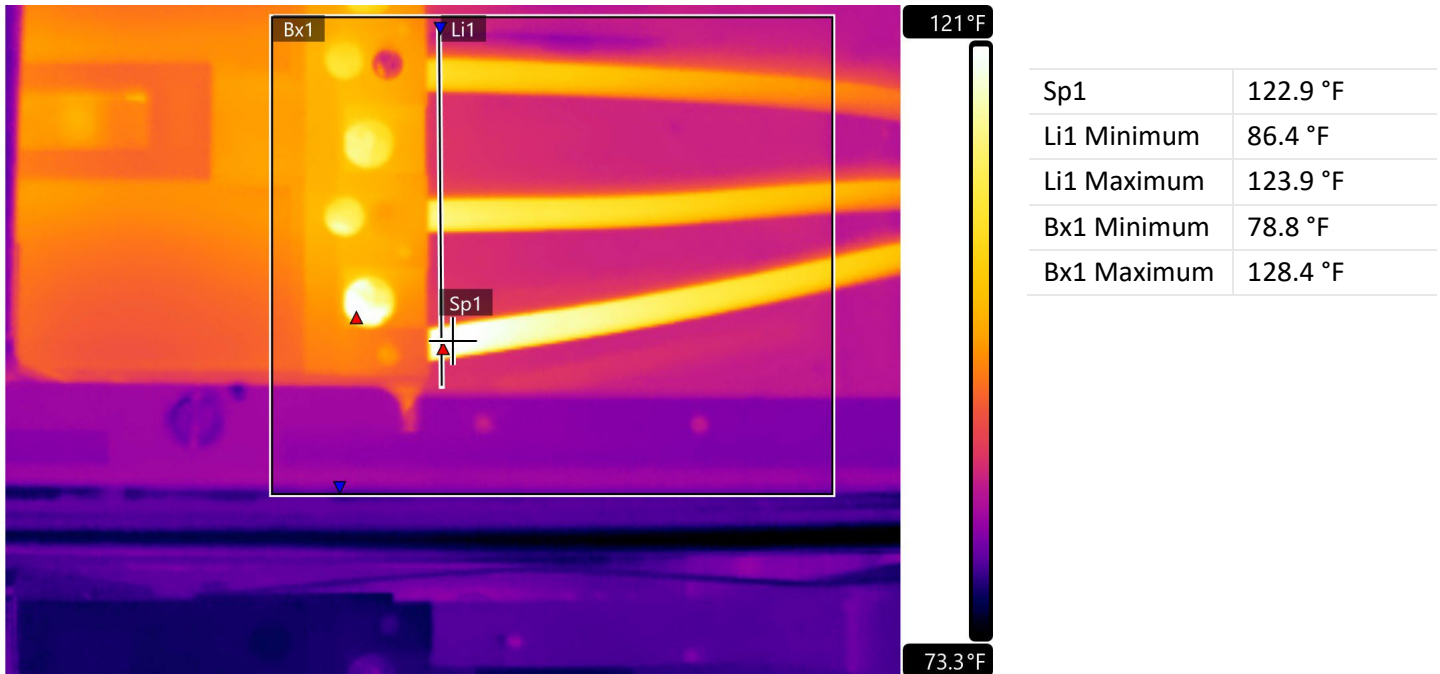
Sp1	135.3 °F
Sp2	124.5 °F
Sp3	112.4 °F
Sp4	130.3 °F
Sp5	123.8 °F
Sp6	109.6 °F
Lines	-
Bx1 Minimum	85.0 °F
Bx1 Maximum	136.2 °F



Fault	Connection issue
Defect Rating	CLASS I

Recommendations
Likely a connection issue. Check load also.

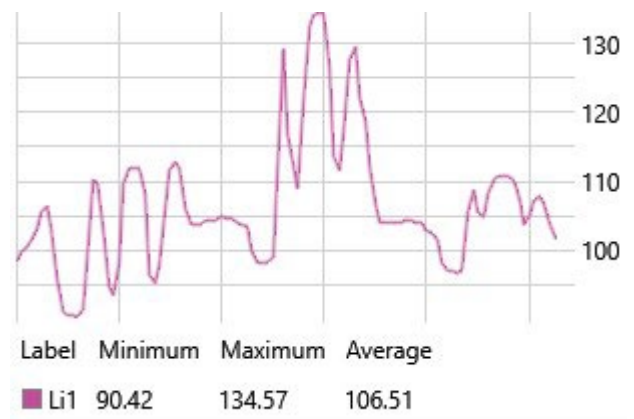
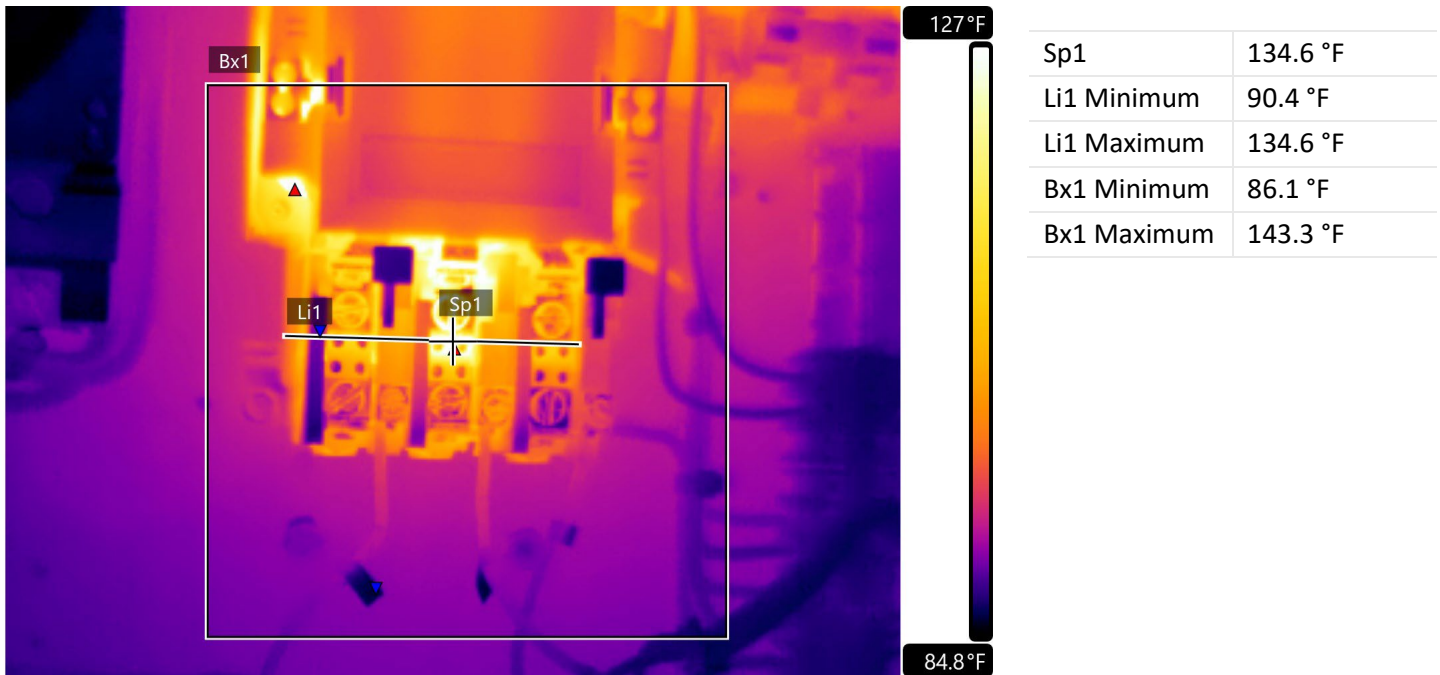
Component	Connection
Equipment/Bucket ID	MCC 300 AHU 351 F(E)



Fault	Connection issue
Defect Rating	CLASS I

Recommendations
Likely a loose or faulty connection. Ensure a tight and clean connection.

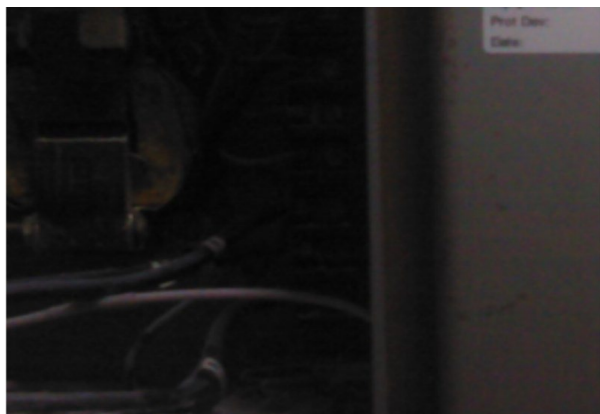
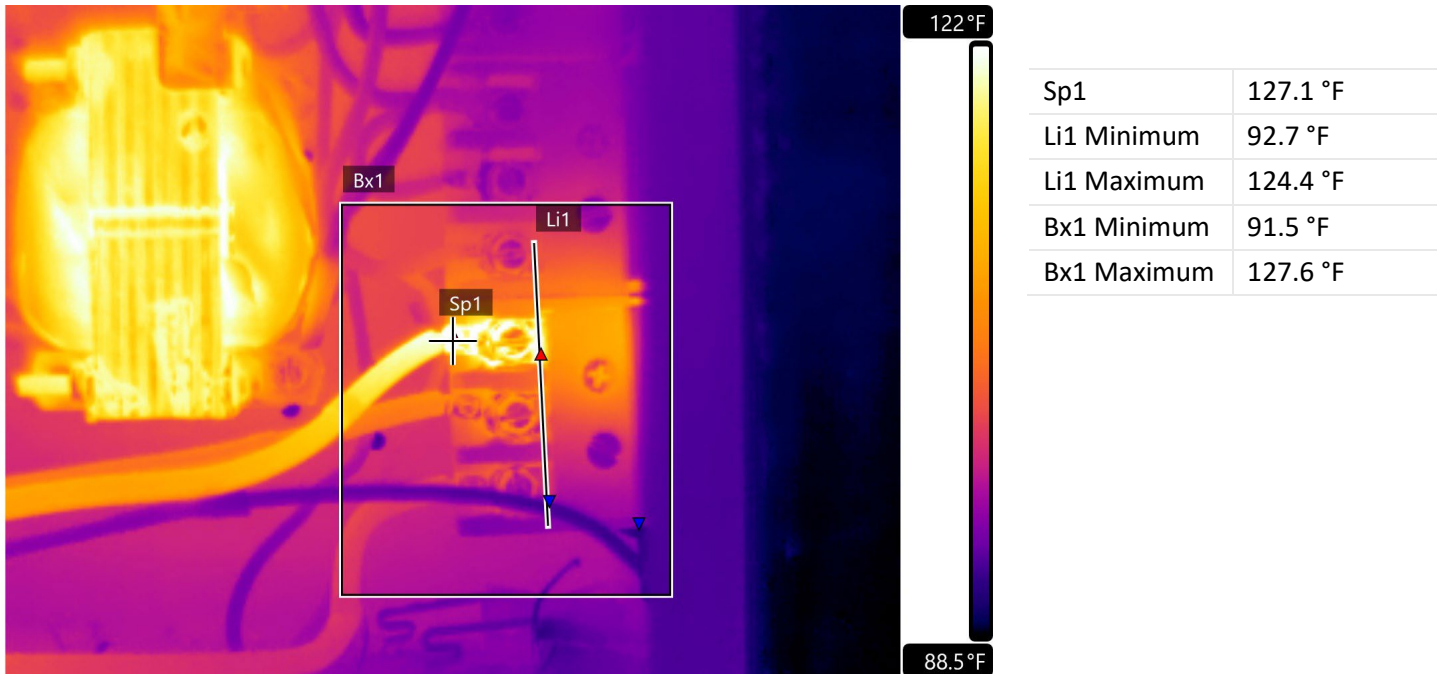
Component	Thermal Heater
Equipment/Bucket ID	P3 Spray Dryer 55 Bogey Condensate Pump



Fault	Thermal Heater Issue
Defect Rating	CLASS I

Recommendations
Thermal heater has possible issue. Replace as needed.

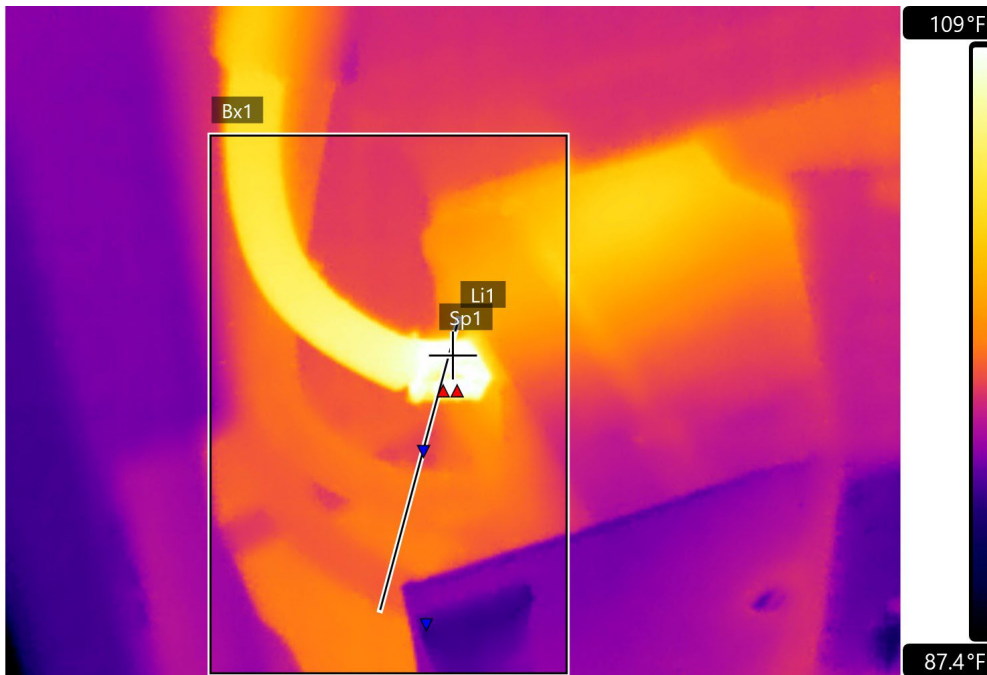
Component	Connection
Equipment/Bucket ID	286 HYD. Agitator #2



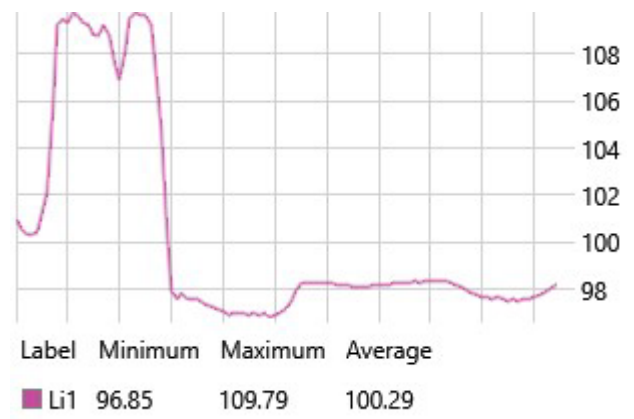
Fault	Connection issue
Defect Rating	CLASS I

Recommendations
Likely a loose or faulty connection. Ensure a tight and clean connection.

Component	Connection
Equipment/Bucket ID	21



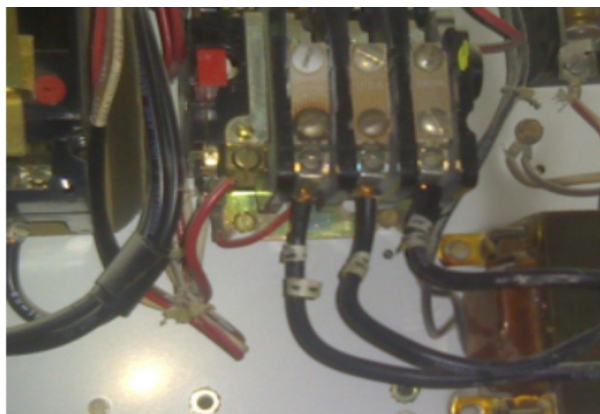
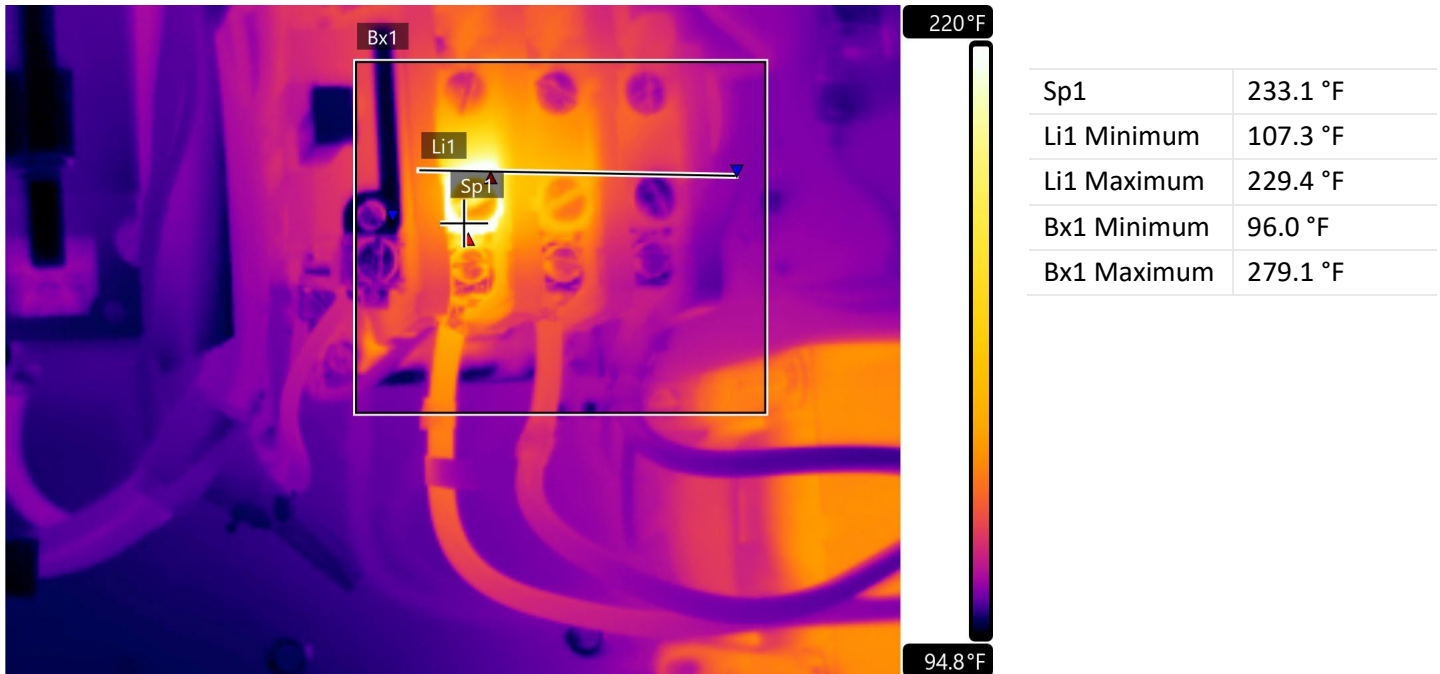
Sp1	108.9 °F
Li1 Minimum	96.9 °F
Li1 Maximum	109.8 °F
Bx1 Minimum	92.6 °F
Bx1 Maximum	110.1 °F



Fault	Connection issue
Defect Rating	CLASS I

Recommendations
Likely a loose or faulty connection. Ensure a tight and clean connection.

Component	Thermal heater connection
Equipment/Bucket ID	22 6119



Fault	Loose/faulty thermal heater
Defect Rating	CLASS I

Recommendations	Thermal heater has possible issue. Replace as needed.
-----------------	---



This concludes our survey report. Please feel free to contact us at any time for question or comments.

Thank you for your business,

Kerion W. Maxwell



ITC Certified Level II Infrared Thermographer

(901) 486-4565

kwilliam@gohispeed.com