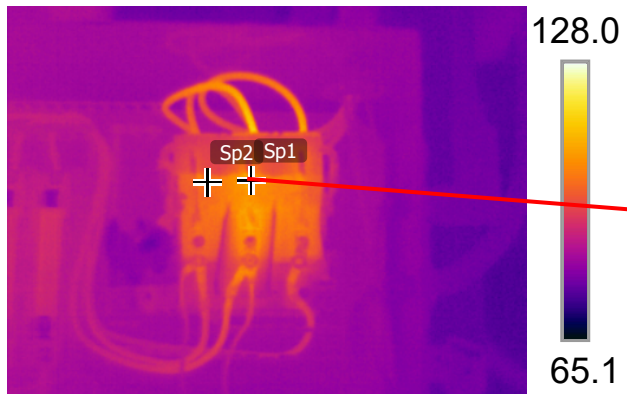
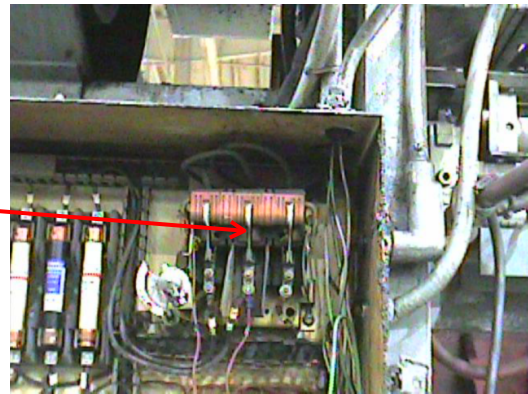


4/12/2021 7:08:28 AM



IR\_1777.jpg S60 NTSC 21801575

4/12/2021 7:08:37 AM



DC\_1778.jpg

#### Measurements

Sp1	118.9 °F
Sp2	102.7 °F

#### Parameters

Emissivity	0.95
Refl. temp.	49 °F

#### Asset #2223

The infrared data indicates that the blade for phase B has a high resistance connection. This could be due to blade looseness or the blade could be dirty. Inspect, clean and check for proper seating of the blade in reciver.