



7030 Ryburn Drive Millington, TN 38053 Office: 901-873-5300 Fax: 901-873-5301
gohispeed.com

QualiTest IR Radiometric Survey Report



Atlantic Dry Ice Brandon, MS Ammonia Compressor MCC/Control Panels

Kevin W. Maxwell

ITC Certified Level II Infrared Thermographer
kwilliam@gohispeed.com

Job Number	141364
Survey Date	12/10/19
Report Date	12/16/19

QualiTest IR Radiometric Survey Report



All electrical panels were scanned using a FLIR P60 infrared camera. The following report only contains defects that were found during the survey. Below is our classification system for each defect contained in this report. If there are any questions or comments, please feel free to contact us at any time.

Hi-Speed Industrial Service QualiTest Diagnostics employs a three-step defect rating system:

CLASS I - A defect or defects are present that are likely to cause a problem in the long term (2-6 months). Should be addressed in the normal course of maintenance scheduling; continue to monitor.

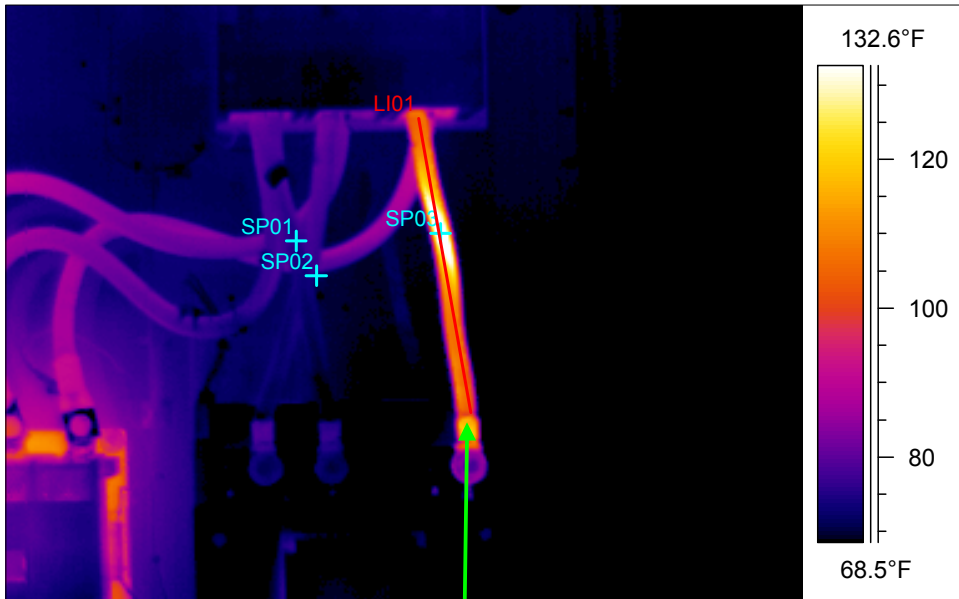
CLASS II - A defect or defects are present that are likely to cause a failure in the short term (less than 2 months). Should be addressed as soon as is practical, on a high maintenance priority. Consideration should be given to increased monitoring frequency.

CLASS III - A defect or defects are present that make continued component reliability unpredictable, and likelihood of secondary damage is high. Consideration should be given to an unscheduled shutdown to correct.

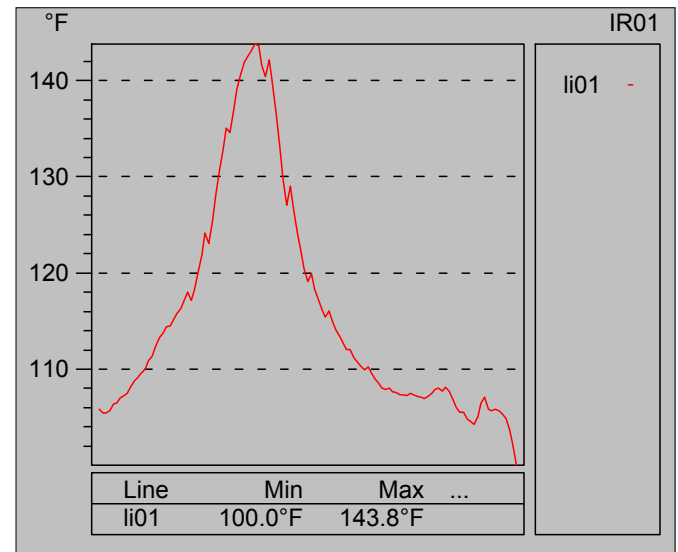
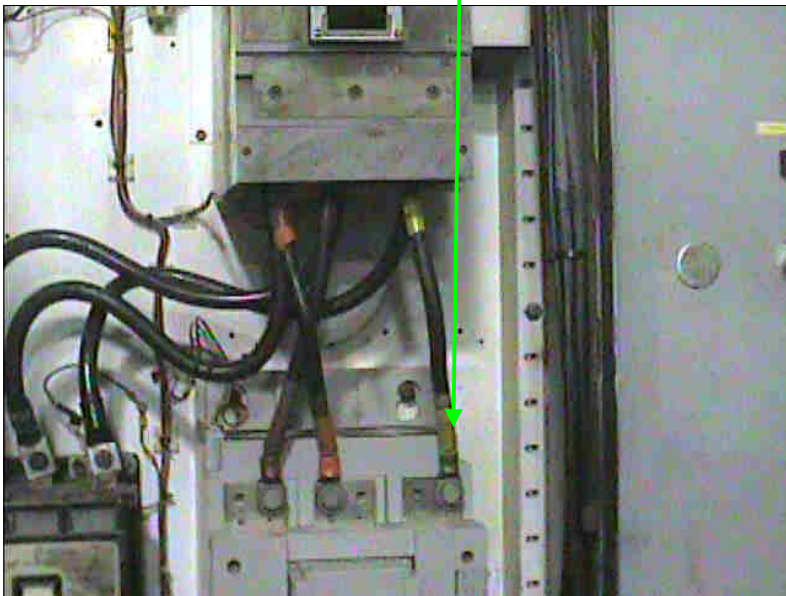
Hi-Speed Industrial Service tests and inspects industrial and equipment and makes recommendations concerning maintenance and repairs based on its experience in the field of industrial repair and maintenance. The information provided herein is provided as an opinion only, not as a guaranty or warranty of.



Component	Equipment/Bucket ID	Plant/Area	Date
Phase 3 Lead	C-3 MCC	Brandon, MS	12/10/19



Label	Value
IR : max	144.1°F
IR : min	57.1°F
SP01	74.6°F
SP02	73.6°F
SP03	144.1°F
LI01 : max	143.8°F
LI01 : min	100.0°F



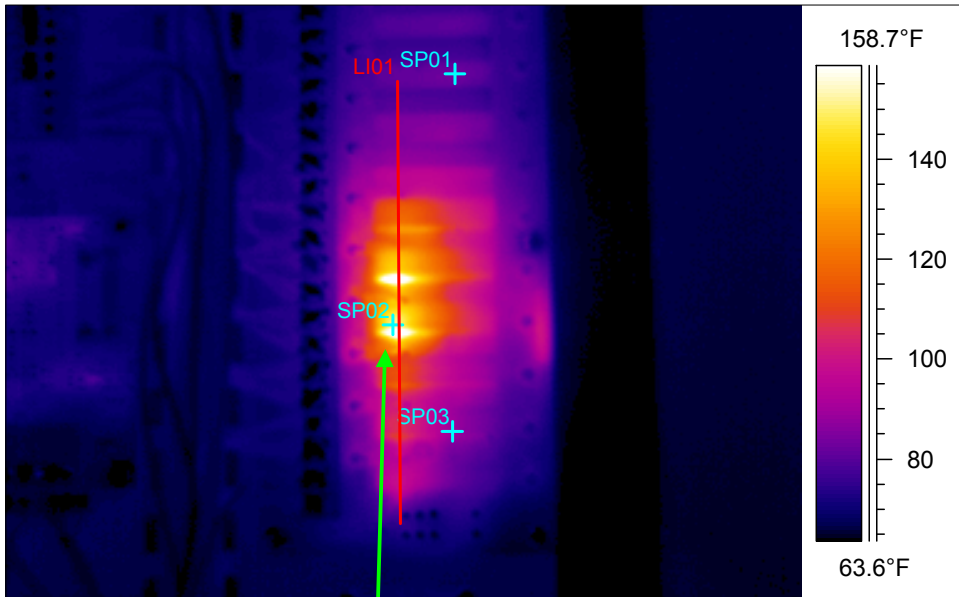
Fault	Damaged wire/Loose connections
Defect Rating	CLASS III

Recommendation

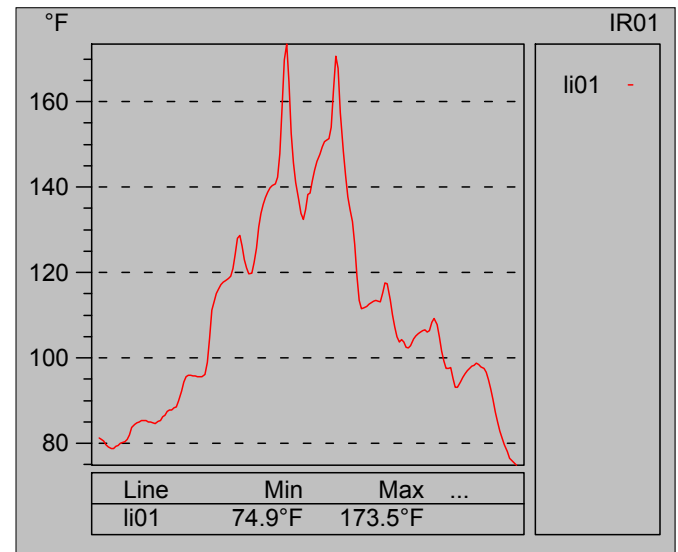
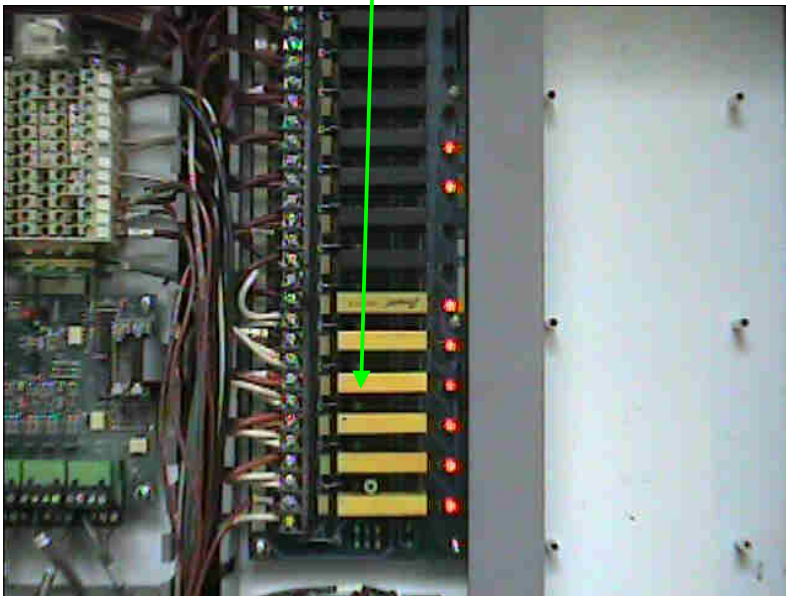
IR image shows a substantial temp delta on the phase 3 lead going to the motor starter. Lead needs to be replaced as soon as possible. Ensure lugs and connections are clean and tight.



Component	Equipment/Bucket ID	Plant/Area	Date
Unknown components	C-2 Microprocessor Control Panel	Brandon, MS	12/10/19



Label	Value
IR : max	173.5°F
IR : min	57.0°F
SP01	83.1°F
SP02	151.3°F
SP03	89.6°F
LI01 : max	173.5°F
LI01 : min	74.9°F



Fault	Faulty component/connection
Defect Rating	CLASS II

Recommendation

IR image shows unknown components to either have a bad connections or they have internal faults. It appears that the two components with the issue are the 4th and 5th ones from the bottom. Check components for proper connection and replace if needed.