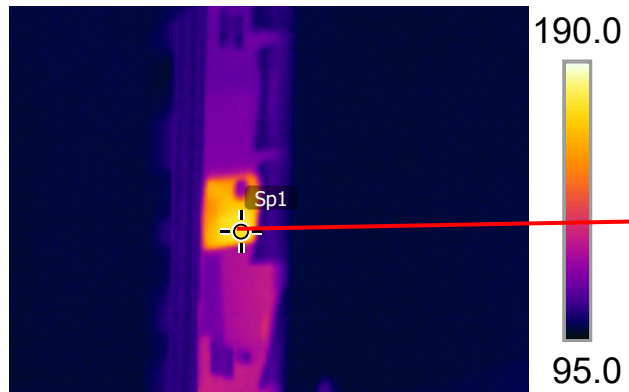
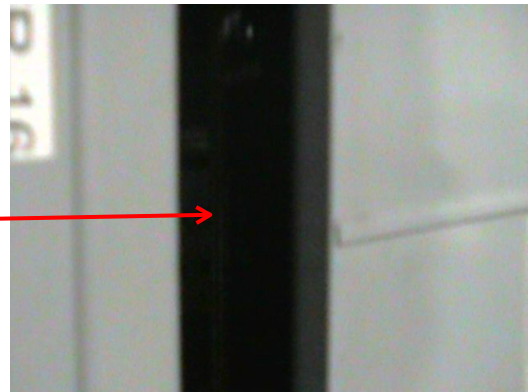


8/24/2021 7:27:09 AM



IR_1913.jpg S60 NTSC 21801575

8/24/2021 7:27:25 AM



DC_1914.jpg

Measurements

Sp1	178.6 °F
-----	----------

Parameters

Emissivity	0.95
Refl. temp.	49 °F

Infrared data indicates that 1 of the bus bars has a loose connection between the main breaker and the buss bar. Clean both bus bar surfaces and tight to correct torque.