



MILLINGTON, TN

LITTLE ROCK, AR

## Job Information

Job #: 96876

Date: August 12, 2020

Priority: —

Authorized OT: No

Authorized by:

## Customer Information

Name: Huber

Motor#:

## Name Plate Information

Manufacturer: METALFAB

Enclosure : Totally Enclosed  
Non-Ventilated

Horsepower/kW: 3

Serial#: 070591170

Model#:

Service Factor: 1.15

Frame:

Rated RPM: 1800

Rated Voltage: 240/440

Phase: 3

Rated Amps: 6.0/3.0

Cycles: 60

Special design: No

### WEST TENNESSEE

7030 Ryburn Drive  
Millington, TN 38053  
Phone 901-873-5300  
Fax 901-873-5301

### CENTRAL ARKANSAS

6812 Lindsey Rd.  
Little Rock, AR 72206  
Phone 501-375-9178  
Fax 501-375-4254



MILLINGTON, TN

LITTLE ROCK, AR

## AC Electrical Inspection

Megs at reassembly: Good

Surge at reassembly: Good

Hi-pot reassembly: Good

### Winding Resistance Incoming

	Phases A to B	Phases B to C	Phases C to A	Resistive imbalance
Outgoing	0.00	0.00	0.00	0.00

## Test Run Inspection

Date August 12, 2020

Yes I have merged this motor and verified that all electrical tests are complete!

### Power Supply

	Phase A	Phase B	Phase C
No Load Voltage	460	457	458
No Load Current	2.1	2.0	2.2

### Temperatures: (Degrees Fahrenheit)

**Test run ball-bearing motors for 15 minutes.**

**Test run sleeve bearing motors for 60 minutes.**

Temperature rise at the end of test run should be less than 2° every five minutes.

#### WEST TENNESSEE

7030 Ryburn Drive  
Millington, TN 38053  
Phone 901-873-5300  
Fax 901-873-5301

#### CENTRAL ARKANSAS

6812 Lindsey Rd.  
Little Rock, AR 72206  
Phone 501-375-9178  
Fax 501-375-4254



MILLINGTON, TN

LITTLE ROCK, AR

## Test Run Inspection (Continued)

### Ambient Temp:

TIME	DE	Degree Change	ODE	Degree Change
------	----	---------------	-----	---------------

START:

5 MIN:

10 MIN:

15 MIN:

20 MIN:

25 MIN:

30 MIN:

35 MIN:

40 MIN:

45 MIN:

50 MIN:

55 MIN:

60 MIN:

#### WEST TENNESSEE

7030 Ryburn Drive  
Millington, TN 38053  
Phone 901-873-5300  
Fax 901-873-5301

#### CENTRAL ARKANSAS

6812 Lindsey Rd.  
Little Rock, AR 72206  
Phone 501-375-9178  
Fax 501-375-4254

## Test Run Inspection (Continued)

Vibration Data: In./Sec-Peak (Readings should be less than .08 In/Sec Peak)

Horizontal

VDE

Axial

DE

ODE

## Magnetic Center Measurements (Only Applies to Sleeve Bearing Motors)

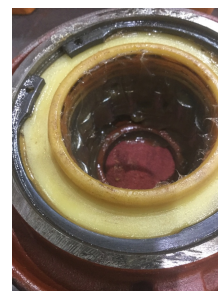
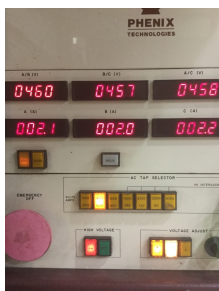
Magnetic Center line distance from shaft shoulder

Magnetic Center line distance from all the way out mark

Magnetic Center line distance from all the way in mark

Total Motor End Float

## Additional photos



☐ Yes, the shaft has been isolated for delivery.

Service Tech name: Robert Wiley

Service Tech signature:

