



MILLINGTON, TN

LITTLE ROCK, AR

## Job Information

Job #: 140598

Date: September 18,  
2019

Priority: —

Authorized OT: No

Authorized by:

## Customer Information

Name: KTG

Motor#: 140598

## Name Plate Information

Manufacturer: MARIO COTTA      Enclosure : Open Drop Proof (ODP)      Horsepower/kW: 0.45kw

Serial#: F118/02      Model#:      Service Factor: S1

Frame:      Rated RPM: 1590      Rated Voltage: 380

Phase: 3      Rated Amps: 1.3      Cycles: 85.6

Special design: Yes

**WEST TENNESSEE**  
7030 Ryburn Drive  
Millington, TN 38053  
Phone 901-873-5300  
Fax 901-873-5301

**CENTRAL ARKANSAS**  
6812 Lindsey Rd.  
Little Rock, AR 72206  
Phone 501-375-9178  
Fax 501-375-4254



MILLINGTON, TN

LITTLE ROCK, AR

## AC Electrical Inspection

Megs at reassembly: Good

Surge at reassembly: Good

Hi-pot reassembly: Good

### Winding Resistance Incoming

	Phases A to B	Phases B to C	Phases C to A	Resistive imbalance
Outgoing	21	21	21	0.3

## Test Run Inspection

Date September 18, 2019

— I have merged this motor and verified that all electrical tests are complete!

### Power Supply

	Phase A	Phase B	Phase C
No Load Voltage	230	230	230
No Load Current	1.0	1.1	1.2

### Temperatures: (Degrees Fahrenheit)

**Test run ball-bearing motors for 15 minutes.**

**Test run sleeve bearing motors for 60 minutes.**

Temperature rise at the end of test run should be less than 2° every five minutes.

#### WEST TENNESSEE

7030 Ryburn Drive  
Millington, TN 38053  
Phone 901-873-5300  
Fax 901-873-5301

#### CENTRAL ARKANSAS

6812 Lindsey Rd.  
Little Rock, AR 72206  
Phone 501-375-9178  
Fax 501-375-4254



MILLINGTON, TN

LITTLE ROCK, AR

## Test Run Inspection (Continued)

**Ambient Temp:** 77

TIME	DE	Degree Change	ODE	Degree Change
------	----	---------------	-----	---------------

START:	77	0	77	0
--------	----	---	----	---

5 MIN:	79	2	78	1
--------	----	---	----	---

10 MIN:

15 MIN:

20 MIN:

25 MIN:

30 MIN:

35 MIN:

40 MIN:

45 MIN:

50 MIN:

55 MIN:

60 MIN:

### WEST TENNESSEE

7030 Ryburn Drive  
Millington, TN 38053  
Phone 901-873-5300  
Fax 901-873-5301

### CENTRAL ARKANSAS

6812 Lindsey Rd.  
Little Rock, AR 72206  
Phone 501-375-9178  
Fax 501-375-4254

## Test Run Inspection (Continued)

Vibration Data: In./Sec-Peak (Readings should be less than .08 In/Sec Peak)

	Horizontal	VDE	Axial
DE	0.023	0.022	0.017
ODE	0.023	0.024	0.015

## Magnetic Center Measurements (Only Applies to Sleeve Bearing Motors)

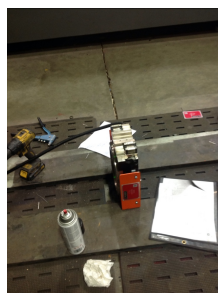
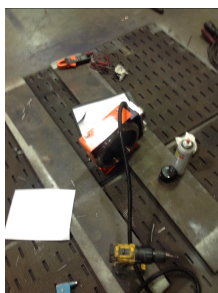
Magnetic Center line distance from shaft shoulder

Magnetic Center line distance from all the way out mark

Magnetic Center line distance from all the way in mark

Total Motor End Float

## Additional photos



Yes, the shaft has been isolated for delivery.

Service Tech name: Michael

Service Tech signature: