



AC Recondition As Found

Peco Foods

625 S. Allen Street
Batesville, AR 72501

FolderID: 99794
FormID: 13585350



AC Recondition - Rev. 2

Location: Shop

Serial Number: B 06 7738761-0005 R 0002

Description: 150HP US Motors 1800RPM 445T

Hi-Speed Job Number:	99794
Manufacturer:	US Motors/Nidec
Product Number:	HD150P2FB
Serial Number:	B 06 7738761-0005 R 0002
HP/kW:	150 (HP)
RPM:	1790 (RPM)
Frame:	445T
Voltage:	460
Current:	171
Phase:	Three
Hz:	60 (Hz)
Service Factor:	1.15
Enclosure:	TEFC
J-box Included:	Complete
Coupling/Sheave:	None
Date Received:	05/12/2022
Bearing RTDs:	No
Stator RTDs:	No
Repair Stage:	Teardown Inspection
Heaters:	No
Winding Type :	Random Wound
Bearing Type:	Rolling Element

Priorities Found:  1 - High  8 - Good

Overall Condition



1. Report Date



3. Describe the Overall Condition of the Equipment as Received

Hi-Speed Industrial Service disclaims all warranties, both express and implied, relating to the information, reports, opinions and analysis disclosed to the Customer by Hi-Speed. Hi-Speed shall not be liable for any errors or omissions, or any losses, injury or damages arising from the use of such information, reports, opinions and analysis by the Customer.

Good

Initial Mechanical/Electrical



4.	Does Shaft Turn Freely?	(Yes) Yes	
5.	Does Shaft Have Visible Damage?	(No) No	
6.	Assembled Shaft Runout	0.001 Inches	
7.	Assembled Shaft End Play		
8.	Air Gap Variation <10%		
9.	Lead Condition	(P) Pass	P31



10.	Lead Length	14 Inches	
11.	Frame Condition	good	
12.	Fan Condition	(P) Pass	P52



13. Broken or Missing Components

Initial Electrical Inspection



14.	Insulation Resistance/Megger	Megohms	
15.	Winding Resistance		
	1-2	1-3	2-3
16.	Perform Surge Test	(P) Pass	P32





Mechanical Inspection



18. Drive End Bearing Number-

N318-E-XL-M1-C3

P8



19. Drive End Bearing Qty.

1

20. Drive End Bearing Type

(Roller) Roller Bearing

21. Drive End Lubrication Type

(Grease) Grease Lubricated

22. Drive End Bearing Insulation or Grounding Device?

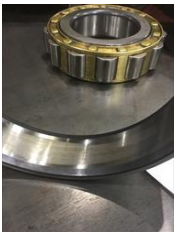
none

23. Drive End Wavy Washer/Snap-Ring Other Retention Device?

24. Drive End Bearing Condition

grease dirty/wear on outer
race

P41



25. Opposite Drive End Bearing Number-

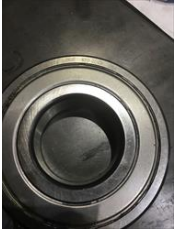
63213-2Z/C3

P46



26. Opposite Drive End Bearing Qty.

1



28. Opposite Drive End Lubrication Type

(Grease) Grease Lubricated

29. Opposite Drive End Bearing Insulation or Grounding Device?

none

30. Opposite Drive End Wavy Washer/Snap-Ring Other Retention Device?

none

31. Opposite Drive End Bearing Condition

pass

32. Drive End Seal

lip seal

P57



33. Opposite Drive End Seal

none

Rotor Inspection

34. Rotor Type/Material

(Squirrel Aluminum) Squirrel
Cage Aluminum Die Cast

35. Growler Test

(Pass) Pass

36. Number of Rotor Bars

37. Rotor Condition

pass

38. List the Parts needed for the Repair Below

39. Signature of Technician that Disassembled Motor

Terrence. Holland

Mechanical Fits- Rotor

40. Shaft Runout

0.001 inches

41. Rotor Runout

Drive End Bearing Fit

Rotor Body

Opposite Drive End Bearing

42. Coupling Fit Closest to Bearing Housing

0 Degrees

90 Degrees



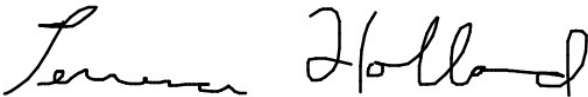
120 Degrees

43. Coupling Fit Closest to the end of the Shaft

0 Degrees

60 Degrees

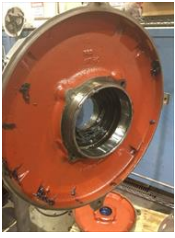
120 Degrees

44.	Drive End Bearing Shaft Fit		
	0 Degrees	60 Degrees	120 Degrees
	3.544	3.544	3.544
45.	Drive End Bearing Shaft Fit Condition (P) Pass		
46.	Opposite Drive End Bearing Shaft Fit		
	0 Degrees	60 Degrees	120 Degrees
	2.559	2.559	2.559
47.	Opposite Drive End Bearing Shaft Fit Condition (P) Pass		
48.	Shaft Air Seal Fits		
	Drive End Air Seal	Opposite Drive End Air Seal	
Mechanical Fits- Bearing Housings			
49.	Drive End - Endbell Bearing Fit		
	0 Degrees	60 Degrees	120 Degrees
	7.481	7.4812	7.4813
50.	Drive End - Endbell Bearing Fit Condition (P) Pass		
51.	Opposite Drive End - Endbell Bearing Fit		
	0 Degrees	60 Degrees	120 Degrees
	5.5126	5.5126	5.5124
52.	Opposite Drive End - Endbell Bearing Fit Condition (P) Pass		
53.	Bearing Cap Condition P29		
	Drive End Bearing Cap	Opposite Drive End Bearing Cap	
	pass	pass	
			
54.	End Bell Air Seal Fits		
	Drive End Air Seal	Opposite Drive End Air Seal	
55.	List Machine Work Needed Below None		
56.	Technician Terrence. Holland		
			
Root Cause of Failure			

57. Failure locations

P6

D.E bearing grease was dirty



58. Root cause of failure

Customer request reconditioning.