



Hi-Speed Industrial Service  
7030 Ryburn Dr  
Millington, Tn 38053  
901-873-5300

## AC Recondition Repair Report

FolderID: 99271  
FormID: 12631909

DeWaffelbakkers (10743)  
10000 Crystal Hill Road  
N.Little Rock, AR 72113

Priorities Found: ● 16 - Good

### General

1. Job Number	99271
2. Report Date	01/21/2022
3. Customer	DeWafelbakkers

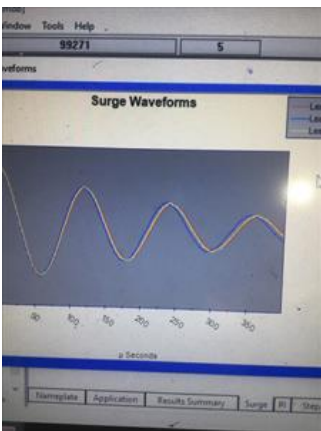
### Name Plate Information

4. Manufacturer	Baldor	P5
-----------------	--------	----



Hi-Speed Industrial Service disclaims all warranties, both express and implied, relating to the information, reports, opinions and analysis disclosed to the Customer by Hi-Speed. Hi-Speed shall not be liable for any errors or omissions, or any losses, injury or damages arising from the use of such information, reports, opinions and analysis by the Customer.



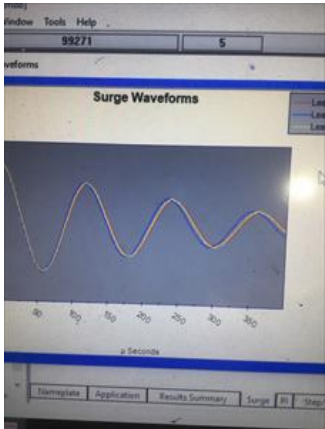




5. Model	09-0000-2117
6. Serial Number	Z2002211047
7. Horsepower	15
8. KW	
9. Volts	460
10. Amps	17.6
11. RPM	1760
12. Frame	254TC
13. Enclosure	TEFC
14. Cycles	60
15. Phase	3
16. Service Factor	1.00
17. Motor Mount Position	
<b>Initial Inspection</b>	
18. Number of Leads	9
19. Lead Length	7 Inches
20. Lead Size	
21. Lead Condition	(P) Pass
22. Lead Markings	
23. Lug Size, Condition, and Type	
24. Winding RTD's	
25. Winding Rtd's Condition	
26. Shaft Run Out	
27. Does Shaft Turn Freely	yes
28. Does Shaft Have Visible Damage	no
29. Bearing Rtd's	
30. Bearing Rtd's Condition	
31. Contamination	
<i>Oil from grease</i>	
32. Frame Condition	(P) Pass
33. Fan Condition	(P) Pass
34. Broken or missing components	
<i>NA</i>	
<b>Initial Electric Test</b>	
35. Resistance to Ground	
36. Winding Resistance 1-2	

Hi-Speed Industrial Service disclaims all warranties, both express and implied, relating to the information, reports, opinions and analysis disclosed to the Customer by Hi-Speed. Hi-Speed shall not be liable for any errors or omissions, or any losses, injury or damages arising from the use of such information, reports, opinions and analysis by the Customer.



37.	Winding Resistance 2-3		
38.	Winding Resistance 1-3		
39.	Resistive Imbalance		
40.	Hi-Pot		
● 41.	Surge Test	(P) Pass	P58
			
42.	Stator Condition		
43.	Failure Location		
<b>Initial Rotor Inspection</b>			
44.	Rotor Type	cast aluminum	
45.	Air Gap <10% Variation		
46.	Number of Rotor Bars		
47.	Number of Broken Rotor Bars	0	
● 48.	Growler Test	(P) Pass	
● 49.	Rotor Condition	(P) Pass	
<b>Mechanical Inspection</b>			
50.	Bearing Manufacture	FAG	
51.	Bearing DE Size	6309	
52.	Bearing DE Type	ball bearing	
53.	DE Bearing Qty.	1	
54.	Bearing ODE Size	6309	
55.	Bearing ODE Type	ball	
56.	ODE Bearing Qty.	1	
57.	Insulated Bearing		
58.	Lubrication Type		
● 59.	Grease Condition	(P) Pass	



61. Shaft Grounding Device

62. DE Seal

(NA) Not Applicable

63. DE Seal Type/Size

64. ODE Seal

(NA) Not Applicable

65. ODE Seal Type/Size

**Root Cause of Failure**

66. Component Failure

bearings

67. Cause of Failure

*Wear*

68. Comments

*Recommend reconditioning and new bearings*

69. Service Technician

CW

**Machine Fit Inspection Report**

70. Shaft Run Out

71. Initial Shaft Run Out

"

72. Final Shaft Run Out

73. DE Bearing Shaft Fit

(P) Pass

74. DE Initial Shaft Bearing Fit Size 1

1.772 "

75. DE Initial Shaft Bearing Fit Size 2

1.772 "

76. DE Initial Shaft Bearing Fit Size 3

1.7719 "

77. DE Finial Shaft Bearing Fit Size 1

78. DE Finial Shaft Bearing Fit Size 2

79. DE Finial Shaft Bearing Fit Size 3

80. ODE Bearing Shaft Fit

(P) Pass

81. ODE Initial Shaft Bearing Fit Size 1

1.7721 "

82. ODE Initial Shaft Bearing Fit Size 2

1.7721 "

83. ODE Initial Shaft Bearing Fit Size 3

1.7721 "

84. ODE Finial Shaft Bearing Fit Size 1

85. ODE Finial Shaft Bearing Fit Size 2

86. ODE Finial Shaft Bearing Fit Size 3

87. DE Air Seal Shaft Fit

88. DE Initial Air Seal Shaft Size

89. DE Final Air Seal Shaft Size

90. ODE Air Seal Shaft Fit

91. ODE Initial Air Seal Shaft Size

Hi-Speed Industrial Service disclaims all warranties, both express and implied, relating to the information, reports, opinions and analysis disclosed to the Customer by Hi-Speed. Hi-Speed shall not be liable for any errors or omissions, or any losses, injury or damages arising from the use of such information, reports, opinions and analysis by the Customer.

92.	ODE Final Air Seal Shaft Size	
93.	DE Endbell Fit	(P) Pass
94.	DE Initial Endbell Fit Size 1	3.9378 "
95.	DE Initial Endbell Fit Size 2	3.9379 "
96.	DE Initial Endbell Fit Size 3	3.9379 "
97.	DE Final Endbell Fit Size 1	
98.	DE Final Endbell Fit Size 2	
99.	DE Final Endbell Fit Size 3	
100.	DE Endbell Fit Insulated	
101.	DE Endbell Air Seal Fit	
102.	Initial Endbell Air Seal Fit Size	
103.	Final Endbell Air Seal Fit Size	
104.	ODE Endbell Fit	(P) Pass
105.	ODE Initial Endbell Fit Size 1	3.9379 "
106.	ODE Initial Endbell Fit Size 2	3.9378 "
107.	ODE Initial Endbell Fit Size 3	3.9378 "
108.	ODE Final Endbell Fit Size 1	
109.	ODE Final Endbell Fit Size 2	
110.	ODE Final Endbell Fit Size 3	
111.	ODE Endbell Fit Insulated	
112.	ODE Endbell Air Seal Fit	
113.	ODE Initial Endbell Seal Fit Size	
114.	ODE Final Endbell Seal Fit Size	
115.	Foot Flatness	(P) Pass
116.	Foot Condition	(P) Pass
117.	Flange Condition	(P) Pass
118.	Service Technician	Cw

## Balancing Report



119. Balance Type nema standard P6



120. Balance Operating Speed  
121. Start Left End  
122. Start Right End  
123. Balancing Specification  
124. Finish Left End  
125. Finish Right End  
126. Service Technician

Hi-Speed Industrial Service disclaims all warranties, both express and implied, relating to the information, reports, opinions and analysis disclosed to the Customer by Hi-Speed. Hi-Speed shall not be liable for any errors or omissions, or any losses, injury or damages arising from the use of such information, reports, opinions and analysis by the Customer.

## Assembly and Final Test



127. Meggar Testing Reading
128. Surge Test
129. Hi-Pot
130. Winding Resistance 1-2
131. Winding Resistance 2-3
132. Winding Resistance 1-3
133. Test Run Voltage Phase A
134. Test Run Amps A
135. Test Run Voltage Phase B
136. Test Run Amps B
137. Test Run Voltage Phase C
138. Test Run Amps C
139. DE Horizontal Vibration Reading
140. DE Vertical Vibration Reading
141. DE Axial Vibration Reading
142. ODE Horizontal Vibration Reading
143. ODE Vertical Vibration Reading
144. ODE Axial Vibration Reading
145. Ambient Temp at start of Test Run
146. Temp at 5 minutes
147. Temp at 10 minutes
148. Temp at 15 minutes
149. Temp at 20 minutes
150. Temp at 25 minutes
151. Temp at 30 minutes
152. Temp at 35 minutes
153. Temp at 40 minutes
154. Temp at 45 minutes
155. Temp at 50 minutes
156. Temp at 55 minutes
157. Temp at 60 minutes

- 158. Motor Paint

(P) Pass

P136

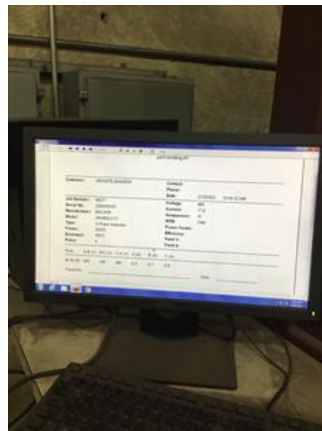


Hi-Speed Industrial Service disclaims all warranties, both express and implied, relating to the information, reports, opinions and analysis disclosed to the Customer by Hi-Speed. Hi-Speed shall not be liable for any errors or omissions, or any losses, injury or damages arising from the use of such information, reports, opinions and analysis by the Customer.









159. Service Technician