



## AC Recondition Repair Report

FolderID: 99057  
FormID: 12272975

Sage V Foods  
5901 SLOAN DRIVE  
LITTLE ROCK, AR 72206

Priorities Found: ● 2 - Good

### General

1. Job Number	99057
2. Report Date	12/03/2021
3. Customer	

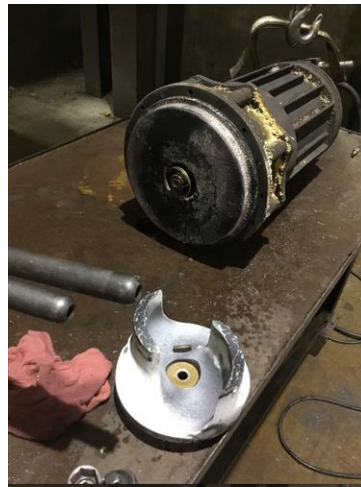
### Name Plate Information



4. Manufacturer

P5







5. Model	<b>G6221-A</b>
6. Serial Number	
7. Horsepower	<b>7.5 HP</b>
8. KW	
9. Volts	<b>460</b>
10. Amps	<b>11 Amps</b>
11. RPM	<b>1750</b>
12. Frame	
13. Enclosure	<b>SUBMERSIBLE PUMP</b>
14. Cycles	<b>60 HZ</b>
15. Phase	<b>3</b>

Hi-Speed Industrial Service disclaims all warranties, both express and implied, relating to the information, reports, opinions and analysis disclosed to the Customer by Hi-Speed. Hi-Speed shall not be liable for any errors or omissions, or any losses, injury or damages arising from the use of such information, reports, opinions and analysis by the Customer.



16.	Service Factor	
17.	Motor Mount Position	
<b>Initial Inspection</b>		
18.	Number of Leads	
19.	Lead Length	
20.	Lead Size	
21.	Lead Condition	
22.	Lead Markings	
23.	Lug Size, Condition, and Type	
24.	Winding RTD's	
25.	Winding Rtd's Condition	
26.	Shaft Run Out	0.002
27.	Does Shaft Turn Freely	
28.	Does Shaft Have Visible Damage	
29.	Bearing Rtd's	
30.	Bearing Rtd's Condition	
31.	Contamination	
32.	Frame Condition	
33.	Fan Condition	(NA) Not Applicable
34.	Broken or missing components	
<b>Initial Electric Test</b>		
35.	Resistance to Ground	
36.	Winding Resistance 1-2	
37.	Winding Resistance 2-3	
38.	Winding Resistance 1-3	
39.	Resistive Imbalance	
40.	Hi-Pot	
41.	Surge Test	
42.	Stator Condition	
43.	Failure Location	
<b>Initial Rotor Inspection</b>		
44.	Rotor Type	
45.	Air Gap <10% Variation	
46.	Number of Rotor Bars	
47.	Number of Broken Rotor Bars	
48.	Growler Test	
49.	Rotor Condition	
<b>Mechanical Inspection</b>		
50.	Bearing Manufacture	
51.	Bearing DE Size	
52.	Bearing DE Type	
53.	DE Bearing Qty.	
54.	Bearing ODE Size	
55.	Bearing ODE Type	
56.	ODE Bearing Qty.	
57.	Insulated Bearing	
58.	Lubrication Type	
59.	Grease Condition	

Hi-Speed Industrial Service disclaims all warranties, both express and implied, relating to the information, reports, opinions and analysis disclosed to the Customer by Hi-Speed. Hi-Speed shall not be liable for any errors or omissions, or any losses, injury or damages arising from the use of such information, reports, opinions and analysis by the Customer.

60.	Bearing Retainers
61.	Shaft Grounding Device
62.	DE Seal
63.	DE Seal Type/Size
64.	ODE Seal
65.	ODE Seal Type/Size
<b>Root Cause of Failure</b>	
66.	Component Failure
67.	Cause of Failure
68.	Comments
69.	Service Technician
<b>Machine Fit Inspection Report</b>	
70.	Shaft Run Out
71.	Initial Shaft Run Out
72.	Final Shaft Run Out
73.	DE Bearing Shaft Fit
74.	DE Initial Shaft Bearing Fit Size 1
75.	DE Initial Shaft Bearing Fit Size 2
76.	DE Initial Shaft Bearing Fit Size 3
77.	DE Finial Shaft Bearing Fit Size 1
78.	DE Finial Shaft Bearing Fit Size 2
79.	DE Finial Shaft Bearing Fit Size 3
80.	ODE Bearing Shaft Fit
81.	ODE Initial Shaft Bearing Fit Size 1
82.	ODE Initial Shaft Bearing Fit Size 2
83.	ODE Initial Shaft Bearing Fit Size 3
84.	ODE Finial Shaft Bearing Fit Size 1
85.	ODE Finial Shaft Bearing Fit Size 2
86.	ODE Finial Shaft Bearing Fit Size 3
87.	DE Air Seal Shaft Fit
88.	DE Initial Air Seal Shaft Size
89.	DE Final Air Seal Shaft Size
90.	ODE Air Seal Shaft Fit
91.	ODE Initial Air Seal Shaft Size
92.	ODE Final Air Seal Shaft Size
93.	DE Endbell Fit
94.	DE Initial Endbell Fit Size 1
95.	DE Initial Endbell Fit Size 2
96.	DE Initial Endbell Fit Size 3
97.	DE Final Endbell Fit Size 1
98.	DE Finial Endbell Fit Size 2
99.	DE Final Endbell Fit Size 3
100.	DE Endbell Fit Insulated
101.	DE Endbell Air Seal Fit
102.	Initial Endbell Air Seal Fit Size
103.	Finial Endbell Air Seal Fit Size
104.	ODE Endbell Fit
105.	ODE Initial Endbell Fit Size 1

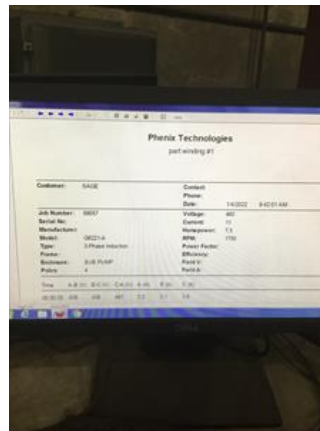
Hi-Speed Industrial Service disclaims all warranties, both express and implied, relating to the information, reports, opinions and analysis disclosed to the Customer by Hi-Speed. Hi-Speed shall not be liable for any errors or omissions, or any losses, injury or damages arising from the use of such information, reports, opinions and analysis by the Customer.

106.	ODE Initial Endbell Fit Size 2	
107.	ODE Initial Endbell Fit Size 3	
108.	ODE Final Endbell Fit Size 1	
109.	ODE Final Endbell Fit Size 2	
110.	ODE Final Endbell Fit Size 3	
111.	ODE Endbell Fit Insulated	
112.	ODE Endbell Air Seal Fit	
113.	ODE Initial Endbell Seal Fit Size	
114.	ODE Finial Endbell Seal Fit Size	
115.	Foot Flatness	
116.	Foot Condition	
117.	Flange Condition	
118.	Service Technician	
<b>Balancing Report</b>		
119.	Balance Type	
120.	Balance Operating Speed	
121.	Start Left End	
122.	Start Right End	
123.	Balancing Specification	
124.	Finish Left End	
125.	Finish Right End	
126.	Service Technician	
<b>Assembly and Final Test</b>		
127.	Meggar Testing Reading	Mohm
● 128.	Surge Test	(P) Pass
129.	Hi-Pot	
130.	Winding Resistance 1-2	
131.	Winding Resistance 2-3	
132.	Winding Resistance 1-3	
133.	Test Run Voltage Phase A	
134.	Test Run Amps A	
135.	Test Run Voltage Phase B	
136.	Test Run Amps B	
137.	Test Run Voltage Phase C	
138.	Test Run Amps C	
139.	DE Horizontal Vibration Reading	
140.	DE Vertical Vibration Reading	
141.	DE Axial Vibration Reading	
142.	ODE Horizontal Vibration Reading	
143.	ODE Vertical Vibration Reading	
144.	ODE Axial Vibration Reading	
145.	Ambient Temp at start of Test Run	
146.	Temp at 5 minutes	
147.	Temp at 10 minutes	
148.	Temp at 15 minutes	
149.	Temp at 20 minutes	
150.	Temp at 25 minutes	
151.	Temp at 30 minutes	

Hi-Speed Industrial Service disclaims all warranties, both express and implied, relating to the information, reports, opinions and analysis disclosed to the Customer by Hi-Speed. Hi-Speed shall not be liable for any errors or omissions, or any losses, injury or damages arising from the use of such information, reports, opinions and analysis by the Customer.

152. Temp at 35 minutes
153. Temp at 40 minutes
154. Temp at 45 minutes
155. Temp at 50 minutes
156. Temp at 55 minutes
157. Temp at 60 minutes
158. Motor Paint

P136



Hi-Speed Industrial Service disclaims all warranties, both express and implied, relating to the information, reports, opinions and analysis disclosed to the Customer by Hi-Speed. Hi-Speed shall not be liable for any errors or omissions, or any losses, injury or damages arising from the use of such information, reports, opinions and analysis by the Customer.



159. Service Technician

**Terrence. Holland**

A handwritten signature in black ink that reads "Terrence Holland". The signature is written in a cursive style with a long horizontal stroke at the end.