



Hi-Speed Industrial Service  
7030 Ryburn Dr  
Millington, Tn 38053  
901-873-5300

## AC Recondition Repair Report

FolderID: 98820  
FormID: 11740109

Sage V Foods  
5901 SLOAN DRIVE  
LITTLE ROCK, AR 72206

Priorities Found: ● 2 - High ● 11 - Good

### General

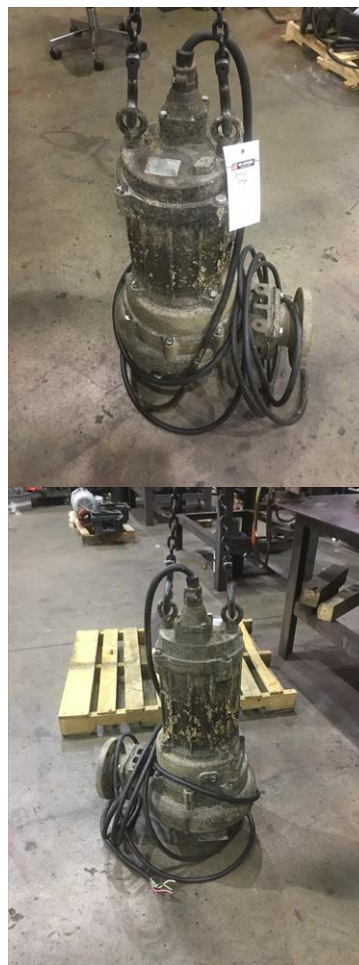
1. Job Number	98820
2. Report Date	10/05/2020
3. Customer	Sage V Foods

### Name Plate Information




4. Manufacturer	Tsurumi Pump
-----------------	--------------

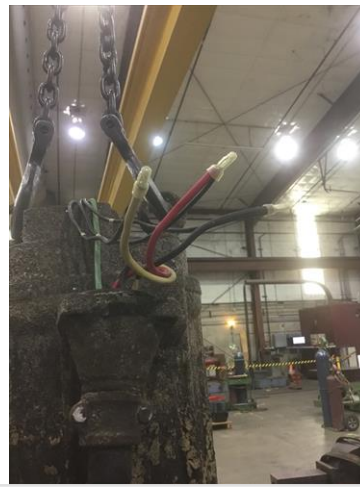
P5



Hi-Speed Industrial Service disclaims all warranties, both express and implied, relating to the information, reports, opinions and analysis disclosed to the Customer by Hi-Speed. Hi-Speed shall not be liable for any errors or omissions, or any losses, injury or damages arising from the use of such information, reports, opinions and analysis by the Customer.



5.	Model	100B47.5-64
6.	Serial Number	B-11110398
7.	Horsepower	10
8.	KW	
9.	Volts	460
10.	Amps	13.4
11.	RPM	1800 RPM
	Not nameplate, 4 pole	
12.	Frame	
13.	Enclosure	TYPE 3
14.	Cycles	60
15.	Phase	3
16.	Service Factor	
17.	Motor Mount Position	Submersible Pump
Initial Inspection		



19. Lead Length **24 Inches**

20. Lead Size

21. Lead Condition **(P) Pass**

22. Lead Markings **1 2 3**

23. Lug Size, Condition, and Type  
*Crimp style*

P67



24. Winding RTD's

25. Winding Rtd's Condition

26. Shaft Run Out **0.001**

27. Does Shaft Turn Freely **yes**

28. Does Shaft Have Visible Damage **no**

29. Bearing Rtd's

30. Bearing Rtd's Condition

31. Contamination

32. Frame Condition

33. Fan Condition

34. Broken or missing components



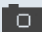

#### Initial Electric Test

35. Resistance to Ground




36. Winding Resistance 1-2

37. Winding Resistance 2-3

38. Winding Resistance 1-3

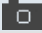
39.	Resistive Imbalance		
40.	Hi-Pot		
● 41.	Surge Test	(P) Pass	
42.	Stator Condition	pass	
43.	Failure Location		
<b>Initial Rotor Inspection</b>			
44.	Rotor Type	cast aluminum	P4
			
45.	Air Gap <10% Variation		
46.	Number of Rotor Bars	40	
47.	Number of Broken Rotor Bars	0	
● 48.	Growler Test	(P) Pass	
● 49.	Rotor Condition	(P) Pass	
<b>Mechanical Inspection</b>			
50.	Bearing Manufacture	fag	
51.	Bearing DE Size	6309 rsr sealed	P15
			
52.	Bearing DE Type	ball	
53.	DE Bearing Qty.	1	





54. Bearing ODE Size	6306 rsr sealed	P43
		
55. Bearing ODE Type	ball	
56. ODE Bearing Qty.	1	P59
		
57. Insulated Bearing		
58. Lubrication Type	grease	
<input checked="" type="radio"/> 59. Grease Condition	(F) Fail	
<input checked="" type="radio"/> 60. Bearing Retainers	(Y) Yes	P80
		
61. Shaft Grounding Device		
<input checked="" type="radio"/> 62. DE Seal	(Y) Yes	P86

Hi-Speed Industrial Service disclaims all warranties, both express and implied, relating to the information, reports, opinions and analysis disclosed to the Customer by Hi-Speed. Hi-Speed shall not be liable for any errors or omissions, or any losses, injury or damages arising from the use of such information, reports, opinions and analysis by the Customer.




63.	DE Seal Type/Size	special to pump
64.	ODE Seal	
65.	ODE Seal Type/Size	
<b>Root Cause of Failure</b>		
66.	Component Failure	
67.	Cause of Failure	
68.	Comments	
69.	Service Technician	
<b>Machine Fit Inspection Report</b>		
70.	Shaft Run Out	(P) Pass
71.	Initial Shaft Run Out	0.001 "
72.	Final Shaft Run Out	
73.	DE Bearing Shaft Fit	(P) Pass
74.	DE Initial Shaft Bearing Fit Size 1	1.7721 "
75.	DE Initial Shaft Bearing Fit Size 2	1.7721 "
76.	DE Initial Shaft Bearing Fit Size 3	1.7721 "
77.	DE Finial Shaft Bearing Fit Size 1	
78.	DE Finial Shaft Bearing Fit Size 2	
79.	DE Finial Shaft Bearing Fit Size 3	
80.	ODE Bearing Shaft Fit	(P) Pass
81.	ODE Initial Shaft Bearing Fit Size 1	1.1813 "
82.	ODE Initial Shaft Bearing Fit Size 2	1.1814 "
83.	ODE Initial Shaft Bearing Fit Size 3	1.1813 "

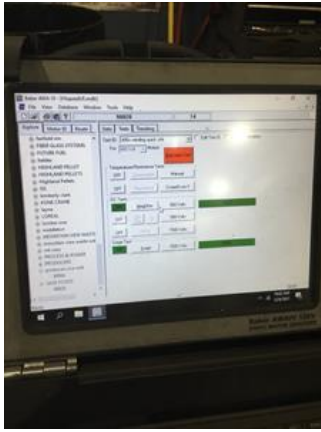
Hi-Speed Industrial Service disclaims all warranties, both express and implied, relating to the information, reports, opinions and analysis disclosed to the Customer by Hi-Speed. Hi-Speed shall not be liable for any errors or omissions, or any losses, injury or damages arising from the use of such information, reports, opinions and analysis by the Customer.

84.	ODE Finial Shaft Bearing Fit Size 1		
85.	ODE Finial Shaft Bearing Fit Size 2		
86.	ODE Finial Shaft Bearing Fit Size 3		
87.	DE Air Seal Shaft Fit		
88.	DE Initial Air Seal Shaft Size		
89.	DE Final Air Seal Shaft Size		
90.	ODE Air Seal Shaft Fit		
91.	ODE Initial Air Seal Shaft Size		
92.	ODE Final Air Seal Shaft Size		
● 93.	DE Endbell Fit	(P) Pass	P129
			
94.	DE Initial Endbell Fit Size 1	3.9378 "	
95.	DE Initial Endbell Fit Size 2	3.9378 "	
96.	DE Initial Endbell Fit Size 3	3.9378 "	
97.	DE Final Endbell Fit Size 1		
98.	DE Final Endbell Fit Size 2		
99.	DE Final Endbell Fit Size 3		
100.	DE Endbell Fit Insulated		
101.	DE Endbell Air Seal Fit		
102.	Initial Endbell Air Seal Fit Size		
103.	Finial Endbell Air Seal Fit Size		
● 104.	ODE Endbell Fit	(F) Fail	P145
			
<span>🗨</span> Oversized			
105.	ODE Initial Endbell Fit Size 1	2.8439 "	

Hi-Speed Industrial Service disclaims all warranties, both express and implied, relating to the information, reports, opinions and analysis disclosed to the Customer by Hi-Speed. Hi-Speed shall not be liable for any errors or omissions, or any losses, injury or damages arising from the use of such information, reports, opinions and analysis by the Customer.

106. ODE Initial Endbell Fit Size 2	2.8432 "	
107. ODE Initial Endbell Fit Size 3	2.8389 "	
108. ODE Final Endbell Fit Size 1	2.835 "	P149
		
109. ODE Final Endbell Fit Size 2	2.835 "	
110. ODE Final Endbell Fit Size 3	2.835 "	
111. ODE Endbell Fit Insulated		
112. ODE Endbell Air Seal Fit		
113. ODE Initial Endbell Seal Fit Size		
114. ODE Final Endbell Seal Fit Size		
115. Foot Flatness		
116. Foot Condition		
117. Flange Condition		
118. Service Technician		
<b>Balancing Report</b>		
119. Balance Type		
120. Balance Operating Speed		
121. Start Left End		
122. Start Right End		
123. Balancing Specification		
124. Finish Left End		
125. Finish Right End		
126. Service Technician		
<b>Assembly and Final Test</b>		
127. Meggar Testing Reading		





129. Hi-Pot

130. Winding Resistance 1-2

131. Winding Resistance 2-3

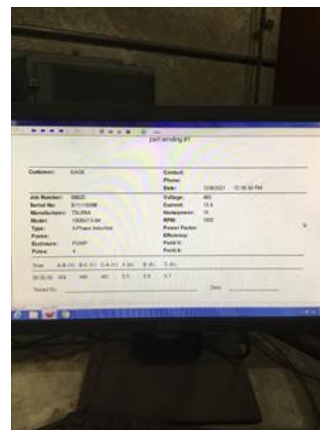
132. Winding Resistance 1-3

Ohm's

133. Test Run Voltage Phase A

Volts

P56



134. Test Run Amps A

Amps

135. Test Run Voltage Phase B

136. Test Run Amps B

137. Test Run Voltage Phase C

138. Test Run Amps C

139. DE Horizontal Vibration Reading

140. DE Vertical Vibration Reading

141. DE Axial Vibration Reading

142. ODE Horizontal Vibration Reading

143. ODE Vertical Vibration Reading

144. ODE Axial Vibration Reading

145. Ambient Temp at start of Test Run

146. Temp at 5 minutes

147. Temp at 10 minutes

148. Temp at 15 minutes

149. Temp at 20 minutes

150. Temp at 25 minutes

Hi-Speed Industrial Service disclaims all warranties, both express and implied, relating to the information, reports, opinions and analysis disclosed to the Customer by Hi-Speed. Hi-Speed shall not be liable for any errors or omissions, or any losses, injury or damages arising from the use of such information, reports, opinions and analysis by the Customer.

151. Temp at 30 minutes
152. Temp at 35 minutes
153. Temp at 40 minutes
154. Temp at 45 minutes
155. Temp at 50 minutes
156. Temp at 55 minutes
157. Temp at 60 minutes
158. Motor Paint

P136





159. Service Technician