



Hi-Speed Industrial Service
7030 Ryburn Dr
Millington, Tn 38053
901-873-5300

AC Recondition Repair Report

FolderID: 98690
FormID: 11535815

Fluid Solutions Inc.
10350 Riverview Corp. Dr
Maumelle, AR 72113

Priorities Found: ● 2 - High ● 12 - Good

General

1. Job Number	98690
2. Report Date	09/08/2021
3. Customer	Fluid Solutions Inc.

Name Plate Information

4. Manufacturer	Baldor Reliance
-----------------	-----------------

P5



Hi-Speed Industrial Service disclaims all warranties, both express and implied, relating to the information, reports, opinions and analysis disclosed to the Customer by Hi-Speed. Hi-Speed shall not be liable for any errors or omissions, or any losses, injury or damages arising from the use of such information, reports, opinions and analysis by the Customer.

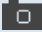










5. Model	37H246R726G1
6. Serial Number	F2002046272
7. Horsepower	5
8. KW	
9. Volts	460
10. Amps	7
11. RPM	1160
12. Frame	215TCZ
13. Enclosure	OPSB
14. Cycles	60
15. Phase	3

Hi-Speed Industrial Service disclaims all warranties, both express and implied, relating to the information, reports, opinions and analysis disclosed to the Customer by Hi-Speed. Hi-Speed shall not be liable for any errors or omissions, or any losses, injury or damages arising from the use of such information, reports, opinions and analysis by the Customer.

16.	Service Factor	1.15	
17.	Motor Mount Position		
Initial Inspection			
18.	Number of Leads	9	P13
			
19.	Lead Length	8 Inches	
20.	Lead Size		
	21.	Lead Condition	(P) Pass
	22.	Lead Markings	1-9
	23.	Lug Size, Condition, and Type	
	24.	Winding RTD's	
	25.	Winding Rtd's Condition	
	26.	Shaft Run Out	
	27.	Does Shaft Turn Freely	yes
	28.	Does Shaft Have Visible Damage	no
			
	29.	Bearing Rtd's	
	30.	Bearing Rtd's Condition	
	31.	Contamination	
		Water	
	32.	Frame Condition	(P) Pass
			P106

Hi-Speed Industrial Service disclaims all warranties, both express and implied, relating to the information, reports, opinions and analysis disclosed to the Customer by Hi-Speed. Hi-Speed shall not be liable for any errors or omissions, or any losses, injury or damages arising from the use of such information, reports, opinions and analysis by the Customer.



- | | |
|----------------------------------|---------------------|
| 33. Fan Condition | (NA) Not Applicable |
| 34. Broken or missing components | |

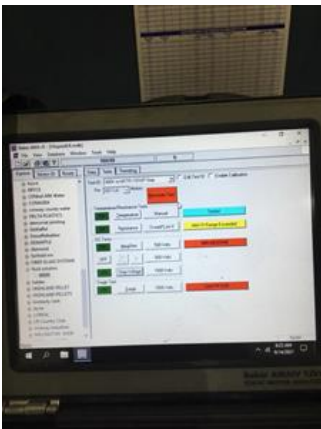
Initial Electric Test



- | |
|----------------------------|
| 35. Resistance to Ground |
| 36. Winding Resistance 1-2 |
| 37. Winding Resistance 2-3 |
| 38. Winding Resistance 1-3 |
| 39. Resistive Imbalance |
| 40. Hi-Pot |
| 41. Surge Test |

(F) Fail

P58








- | |
|----------------------|
| 42. Stator Condition |
|----------------------|

pass

P65



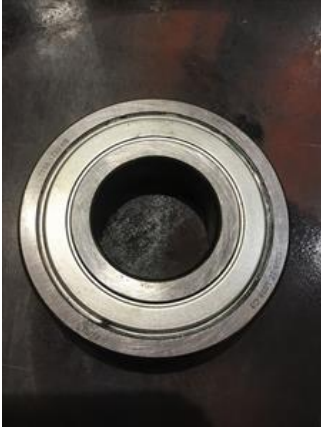
Hi-Speed Industrial Service disclaims all warranties, both express and implied, relating to the information, reports, opinions and analysis disclosed to the Customer by Hi-Speed. Hi-Speed shall not be liable for any errors or omissions, or any losses, injury or damages arising from the use of such information, reports, opinions and analysis by the Customer.

43. Failure Location	seal	
Initial Rotor Inspection		
44. Rotor Type	squirrel cage laminate	P4
		
45. Air Gap <10% Variation		
46. Number of Rotor Bars	27	
47. Number of Broken Rotor Bars	0	
● 48. Growler Test	(P) Pass	
● 49. Rotor Condition	(P) Pass	P50
 		
Mechanical Inspection		
50. Bearing Manufacture	FAG	
51. Bearing DE Size	6209	

52. Bearing DE Type

regular ball bearing

P23



53. DE Bearing Qty.

1

54. Bearing ODE Size

6206

55. Bearing ODE Type

regular ball bearing

56. ODE Bearing Qty.

1

57. Insulated Bearing

no

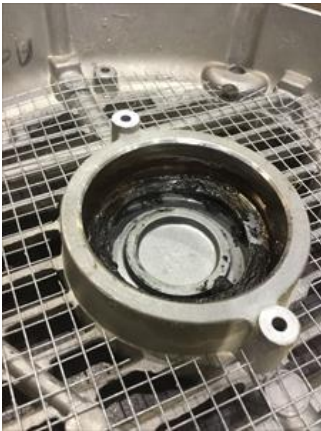
58. Lubrication Type

grease

☒ 59. Grease Condition

(F) Fail

P74


☒ 60. Bearing Retainers

(Y) Yes

P80



61. Shaft Grounding Device

(NA) Not Applicable

☒ 62. DE Seal

(Y) Yes

P86

Hi-Speed Industrial Service disclaims all warranties, both express and implied, relating to the information, reports, opinions and analysis disclosed to the Customer by Hi-Speed. Hi-Speed shall not be liable for any errors or omissions, or any losses, injury or damages arising from the use of such information, reports, opinions and analysis by the Customer.



63. DE Seal Type/Size

(O.D. 2.530 / 1.8035)

P90



64. ODE Seal

65. ODE Seal Type/Size

Root Cause of Failure



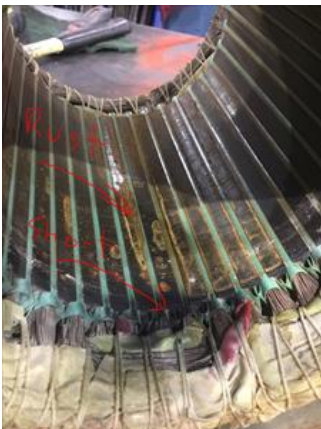
66. Component Failure

main seal

67. Cause of Failure

P14

Main seal failed allowing water to enter the stator windings causing a coil to coil short



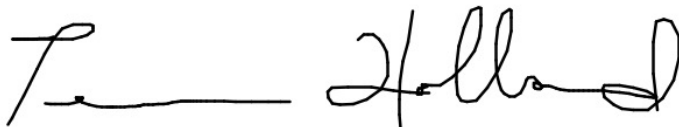
68. Comments



Machine Fit Inspection Report

70.	Shaft Run Out	
71.	Initial Shaft Run Out	
72.	Final Shaft Run Out	
73.	DE Bearing Shaft Fit	(P) Pass
74.	DE Initial Shaft Bearing Fit Size 1	1.772 "
75.	DE Initial Shaft Bearing Fit Size 2	1.772 "
76.	DE Initial Shaft Bearing Fit Size 3	1.7721 "
77.	DE Finial Shaft Bearing Fit Size 1	
78.	DE Finial Shaft Bearing Fit Size 2	
79.	DE Finial Shaft Bearing Fit Size 3	
80.	ODE Bearing Shaft Fit	(P) Pass
81.	ODE Initial Shaft Bearing Fit Size 1	1.1812 "
82.	ODE Initial Shaft Bearing Fit Size 2	1.1812 "
83.	ODE Initial Shaft Bearing Fit Size 3	1.1812 "
84.	ODE Finial Shaft Bearing Fit Size 1	
85.	ODE Finial Shaft Bearing Fit Size 2	
86.	ODE Finial Shaft Bearing Fit Size 3	
87.	DE Air Seal Shaft Fit	
88.	DE Initial Air Seal Shaft Size	
89.	DE Final Air Seal Shaft Size	
90.	ODE Air Seal Shaft Fit	
91.	ODE Initial Air Seal Shaft Size	
92.	ODE Final Air Seal Shaft Size	
93.	DE Endbell Fit	
94.	DE Initial Endbell Fit Size 1	
95.	DE Initial Endbell Fit Size 2	
96.	DE Initial Endbell Fit Size 3	
97.	DE Final Endbell Fit Size 1	
98.	DE Finial Endbell Fit Size 2	
99.	DE Final Endbell Fit Size 3	
100.	DE Endbell Fit Insulated	
101.	DE Endbell Air Seal Fit	
102.	Initial Endbell Air Seal Fit Size	
103.	Finial Endbell Air Seal Fit Size	
104.	ODE Endbell Fit	
105.	ODE Initial Endbell Fit Size 1	
106.	ODE Initial Endbell Fit Size 2	
107.	ODE Initial Endbell Fit Size 3	
108.	ODE Final Endbell Fit Size 1	
109.	ODE Final Endbell Fit Size 2	
110.	ODE Final Endbell Fit Size 3	

Hi-Speed Industrial Service disclaims all warranties, both express and implied, relating to the information, reports, opinions and analysis disclosed to the Customer by Hi-Speed. Hi-Speed shall not be liable for any errors or omissions, or any losses, injury or damages arising from the use of such information, reports, opinions and analysis by the Customer.

111. ODE Endbell Fit Insulated	
112. ODE Endbell Air Seal Fit	
113. ODE Initial Endbell Seal Fit Size	
114. ODE Finial Endbell Seal Fit Size	
● 115. Foot Flatness	(NA) Not Applicable
● 116. Foot Condition	(NA) Not Applicable
● 117. Flange Condition	(P) Pass
118. Service Technician	Terrence. Holland
	

Balancing Report

119. Balance Type
120. Balance Operating Speed
121. Start Left End
122. Start Right End
123. Balancing Specification
124. Finish Left End
125. Finish Right End
126. Service Technician

Assembly and Final Test

127. Meggar Testing Reading
128. Surge Test
129. Hi-Pot
130. Winding Resistance 1-2
131. Winding Resistance 2-3
132. Winding Resistance 1-3
133. Test Run Voltage Phase A
134. Test Run Amps A
135. Test Run Voltage Phase B
136. Test Run Amps B
137. Test Run Voltage Phase C
138. Test Run Amps C
139. DE Horizontal Vibration Reading
140. DE Vertical Vibration Reading
141. DE Axial Vibration Reading
142. ODE Horizontal Vibration Reading
143. ODE Vertical Vibration Reading
144. ODE Axial Vibration Reading
145. Ambient Temp at start of Test Run
146. Temp at 5 minutes
147. Temp at 10 minutes
148. Temp at 15 minutes
149. Temp at 20 minutes
150. Temp at 25 minutes
151. Temp at 30 minutes

Hi-Speed Industrial Service disclaims all warranties, both express and implied, relating to the information, reports, opinions and analysis disclosed to the Customer by Hi-Speed. Hi-Speed shall not be liable for any errors or omissions, or any losses, injury or damages arising from the use of such information, reports, opinions and analysis by the Customer.

152.	Temp at 35 minutes
153.	Temp at 40 minutes
154.	Temp at 45 minutes
155.	Temp at 50 minutes
156.	Temp at 55 minutes
157.	Temp at 60 minutes
158.	Motor Paint
159.	Service Technician