



Hi-Speed Industrial Service  
7030 Ryburn Dr  
Millington, Tn 38053  
901-873-5300

## AC Recondition Repair Report

FolderID: 98276  
FormID: 10743660

**SAGE**  
5901 SLOAN DRIVE  
LITTLE ROCK, AR 72206

Priorities Found: ● 1 - High ● 8 - Good

### General

1. Job Number	98276
2. Report Date	05/27/2021
3. Customer	SAGE FOODS

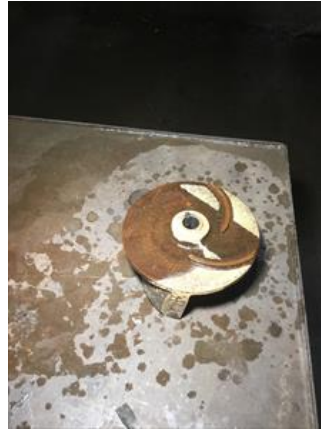
### Name Plate Information



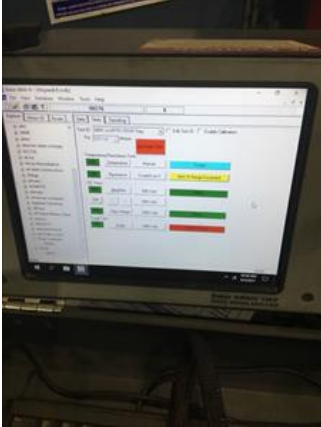
4. Manufacturer	PENTAIR	P5
-----------------	---------	----



Hi-Speed Industrial Service disclaims all warranties, both express and implied, relating to the information, reports, opinions and analysis disclosed to the Customer by Hi-Speed. Hi-Speed shall not be liable for any errors or omissions, or any losses, injury or damages arising from the use of such information, reports, opinions and analysis by the Customer.







5. Model	<b>S4SD750M4-4</b>
6. Serial Number	<b>10644375</b>
7. Horsepower	<b>7.5</b>
8. KW	
9. Volts	<b>460</b>
10. Amps	<b>12.6</b>
11. RPM	<b>1750</b>
12. Frame	
13. Enclosure	<b>SUBMERSIBLE PUMP</b>
14. Cycles	<b>60</b>
15. Phase	<b>3</b>
16. Service Factor	<b>1.2</b>
17. Motor Mount Position	
<b>Initial Inspection</b>	
18. Number of Leads	<b>3</b>





20. Lead Size

● 21. Lead Condition (P) Pass

22. Lead Markings

23. Lug Size, Condition, and Type

24. Winding RTD's

25. Winding Rtd's Condition

26. Shaft Run Out

27. Does Shaft Turn Freely yes

28. Does Shaft Have Visible Damage no

29. Bearing Rtd's

30. Bearing Rtd's Condition

31. Contamination

● 32. Frame Condition (P) Pass

● 33. Fan Condition (NA) Not Applicable

34. Broken or missing components

### Initial Electric Test

35. Resistance to Ground

36. Winding Resistance 1-2

37. Winding Resistance 2-3

38. Winding Resistance 1-3

39. Resistive Imbalance

40. Hi-Pot

● 41. Surge Test (F) Fail

42. Stator Condition pass

43. Failure Location Windings

### Initial Rotor Inspection



44. Rotor Type squirrel cage laminate

45. Air Gap &lt;10% Variation

46. Number of Rotor Bars

47. Number of Broken Rotor Bars 0

● 48. Growler Test (P) Pass



### Mechanical Inspection



50. Bearing Manufacture

skf

51. Bearing DE Size

6307

P15



52. Bearing DE Type

open ball bearing

53. DE Bearing Qty.

1

54. Bearing ODE Size

6303

P43



55. Bearing ODE Type

open ball bearing

56. ODE Bearing Qty.

1


57. Insulated Bearing

no

58. Lubrication Type

oil

Hi-Speed Industrial Service disclaims all warranties, both express and implied, relating to the information, reports, opinions and analysis disclosed to the Customer by Hi-Speed. Hi-Speed shall not be liable for any errors or omissions, or any losses, injury or damages arising from the use of such information, reports, opinions and analysis by the Customer.

59.	Grease Condition	(NA) Not Applicable
60.	Bearing Retainers	(Y) Yes
61.	Shaft Grounding Device	(NA) Not Applicable
62.	DE Seal	(Y) Yes
63.	DE Seal Type/Size	
64.	ODE Seal	
65.	ODE Seal Type/Size	
<b>Root Cause of Failure</b>		
66.	Component Failure	windings show open through power cord
67.	Cause of Failure	<i>Power and sensor cords worn. Windings failed surge test after being disconnected from power cord.</i>
68.	Comments	<i>Tested windings on both testers.</i>
69.	Service Technician	Terrence. Holland
		
<b>Machine Fit Inspection Report</b>		
70.	Shaft Run Out	
71.	Initial Shaft Run Out	
72.	Final Shaft Run Out	
73.	DE Bearing Shaft Fit	
74.	DE Initial Shaft Bearing Fit Size 1	
75.	DE Initial Shaft Bearing Fit Size 2	
76.	DE Initial Shaft Bearing Fit Size 3	
77.	DE Finial Shaft Bearing Fit Size 1	
78.	DE Finial Shaft Bearing Fit Size 2	
79.	DE Finial Shaft Bearing Fit Size 3	
80.	ODE Bearing Shaft Fit	
81.	ODE Initial Shaft Bearing Fit Size 1	
82.	ODE Initial Shaft Bearing Fit Size 2	
83.	ODE Initial Shaft Bearing Fit Size 3	
84.	ODE Finial Shaft Bearing Fit Size 1	
85.	ODE Finial Shaft Bearing Fit Size 2	
86.	ODE Finial Shaft Bearing Fit Size 3	
87.	DE Air Seal Shaft Fit	
88.	DE Initial Air Seal Shaft Size	
89.	DE Final Air Seal Shaft Size	
90.	ODE Air Seal Shaft Fit	
91.	ODE Initial Air Seal Shaft Size	
92.	ODE Final Air Seal Shaft Size	
93.	DE Endbell Fit	
94.	DE Initial Endbell Fit Size 1	
95.	DE Initial Endbell Fit Size 2	
96.	DE Initial Endbell Fit Size 3	

Hi-Speed Industrial Service disclaims all warranties, both express and implied, relating to the information, reports, opinions and analysis disclosed to the Customer by Hi-Speed. Hi-Speed shall not be liable for any errors or omissions, or any losses, injury or damages arising from the use of such information, reports, opinions and analysis by the Customer.

97.	DE Final Endbell Fit Size 1
98.	DE Finial Endbell Fit Size 2
99.	DE Final Endbell Fit Size 3
100.	DE Endbell Fit Insulated
101.	DE Endbell Air Seal Fit
102.	Initial Endbell Air Seal Fit Size
103.	Finial Endbell Air Seal Fit Size
104.	ODE Endbell Fit
105.	ODE Initial Endbell Fit Size 1
106.	ODE Initial Endbell Fit Size 2
107.	ODE Initial Endbell Fit Size 3
108.	ODE Final Endbell Fit Size 1
109.	ODE Final Endbell Fit Size 2
110.	ODE Final Endbell Fit Size 3
111.	ODE Endbell Fit Insulated
112.	ODE Endbell Air Seal Fit
113.	ODE Initial Endbell Seal Fit Size
114.	ODE Finial Endbell Seal Fit Size
115.	Foot Flatness
116.	Foot Condition
117.	Flange Condition
118.	Service Technician
<b>Balancing Report</b>	
119.	Balance Type
120.	Balance Operating Speed
121.	Start Left End
122.	Start Right End
123.	Balancing Specification
124.	Finish Left End
125.	Finish Right End
126.	Service Technician
<b>Assembly and Final Test</b>	
127.	Megger Testing Reading
128.	Surge Test
129.	Hi-Pot
130.	Winding Resistance 1-2
131.	Winding Resistance 2-3
132.	Winding Resistance 1-3
133.	Test Run Voltage Phase A
134.	Test Run Amps A
135.	Test Run Voltage Phase B
136.	Test Run Amps B
137.	Test Run Voltage Phase C
138.	Test Run Amps C
139.	DE Horizontal Vibration Reading
140.	DE Vertical Vibration Reading
141.	DE Axial Vibration Reading
142.	ODE Horizontal Vibration Reading

Hi-Speed Industrial Service disclaims all warranties, both express and implied, relating to the information, reports, opinions and analysis disclosed to the Customer by Hi-Speed. Hi-Speed shall not be liable for any errors or omissions, or any losses, injury or damages arising from the use of such information, reports, opinions and analysis by the Customer.



143. ODE Vertical Vibration Reading
144. ODE Axial Vibration Reading
145. Ambient Temp at start of Test Run
146. Temp at 5 minutes
147. Temp at 10 minutes
148. Temp at 15 minutes
149. Temp at 20 minutes
150. Temp at 25 minutes
151. Temp at 30 minutes
152. Temp at 35 minutes
153. Temp at 40 minutes
154. Temp at 45 minutes
155. Temp at 50 minutes
156. Temp at 55 minutes
157. Temp at 60 minutes
158. Motor Paint
159. Service Technician