

LR Field Services

Prepared for Riceland Foods

1200 N Park Ave
Stuttgart AR 72160

Table of Contents

Field Service Ticket

1.0

Hi-Speed Industrial Service disclaims all warranties, both express and implied, relating to the information, reports, opinions and analysis disclosed to the Customer by Hi-Speed. Hi-Speed shall not be liable for any errors or omissions, or any losses, injury or damages arising from the use of such information, reports, opinions and analysis by the Customer.

Printed on 05/30/2025

Powered by [INSPECTALL](#)

Table of Contents



Hi-Speed Industrial Service
7030 Ryburn Dr
Millington, Tn 38053
901-873-5300

Field Service Ticket

FolderID: 104671
FormID: 24610151

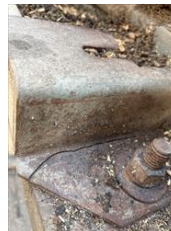
Riceland Foods
1200 N Park Ave
Stuttgart, AR 72160

Job Information

- | | |
|---------------------------------|--------|
| 1. Hi-Speed Job Number | 104671 |
| 2. Asset Type | |
| 3. Make | |
| 4. Model | |
| 5. Serial Number | |
| 6. Customer Asset ID/Asset Name | |

Service Call Details

- | |
|--|
| 7. Service Objectives |
| <i>Collect vibration data for monthly analysis.</i> |
| 8. Services Performed |
| <i>Walk through plant and collect data.</i> |
| 9. Service Technician Recommendations |
| <i>Broken motor base. crack on drive end left side by mounting bolt.
high vibration seen in the vertical plane on motor. Replace motor adapter base.</i> |



Approval Signatures

- | | |
|----------------------------------|------------|
| 10. Service Technician Signature | Shon Jones |
|----------------------------------|------------|

- | | |
|------------------------|-----------------|
| 11. Customer Signature | Donovan Gilmore |
|------------------------|-----------------|

Hi-Speed Industrial Service disclaims all warranties, both express and implied, relating to the information, reports, opinions and analysis disclosed to the Customer by Hi-Speed. Hi-Speed shall not be liable for any errors or omissions, or any losses, injury or damages arising from the use of such information, reports, opinions and analysis by the Customer.