

LR Field Services

Prepared for PRODUCERS RICE STUTTGART

603 N. PARK AVE
STUTTGART AR 72160

Table of Contents



Hi-Speed Industrial Service
7030 Ryburn Dr
Millington, Tn 38053
901-873-5300

Field Service Ticket

FolderID: 104550
FormID: 24331561

PRODUCERS RICE STUTTGART

603 N. PARK AVE
STUTTGART, AR 72160

Job Information

1. Hi-Speed Job Number	104550
2. Asset Type	Hammer mill
3. Make	
4. Model	
5. Serial Number	
6. Customer Asset ID/Asset Name	

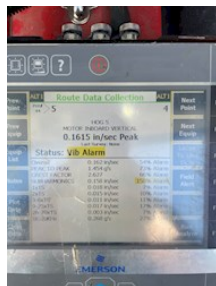
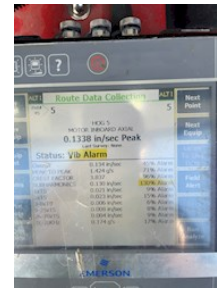
Service Call Details

7. Service Objectives

To check straightness of shaft with dial indicator and then to take vibration readings.

8. Services Performed

Checked runout of the hammer mill shaft. Both ends are within .001. We determined that the shaft is good. We then rotated the shaft to try to knock off the burnt debris from the hammers but there is still some on the new hammers. The drive end of the hammer mill is 0.1 and 0.1. The opposite drive end is at .3 and .2. Customer wants to run the machine when the bag house filters are finished being installed and use the rice to knock off the remaining burn debris from the hammers. The mill felt smooth. Data is under Hog5 on the 2140.

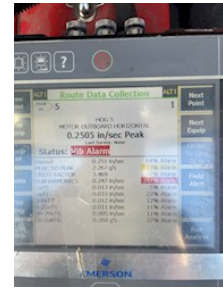


Hi-Speed Industrial Service disclaims all warranties, both express and implied, relating to the information, reports, opinions and analysis disclosed to the Customer by Hi-Speed. Hi-Speed shall not be liable for any errors or omissions, or any losses, injury or damages arising from the use of such information, reports, opinions and analysis by the Customer.

Printed on 05/06/2025

Powered by INSPECTALL

1.0



9. Service Technician Recommendations

Run for a while to knock off remaining debris. If they feel like there the mill gets any worse for any reason we can come back out and balance it.

Approval Signatures

10. Service Technician Signature

Trevor Hall

11. Customer Signature

Edward White