



**May 2025  
Infrared Survey Report**



All electrical panels in FIBERGLASS area were scanned using a **FLIR T865** infrared camera. The following report only contains defects that were found during the survey. Below is our classification system for each defect included in this report. If there are any questions or comments, please feel free to contact us at any time.



employs a three-tier defect rating system:

**CLASS I:** A defect or defects are present that are likely to cause a problem in the long term (2-6 months). Should be addressed in the normal course of maintenance scheduling.

**CLASS II:** A defect or defects are present that are likely to cause a failure in the short term (less than 2 months). Should be addressed as soon as practical, on a high maintenance priority. Consideration should be given to increase monitoring frequency.

**CLASS III:** A defect or defects are present that make continued component reliability unpredictable and likelihood of secondary damage is high. Consideration should be given to an unscheduled shutdown to correct.



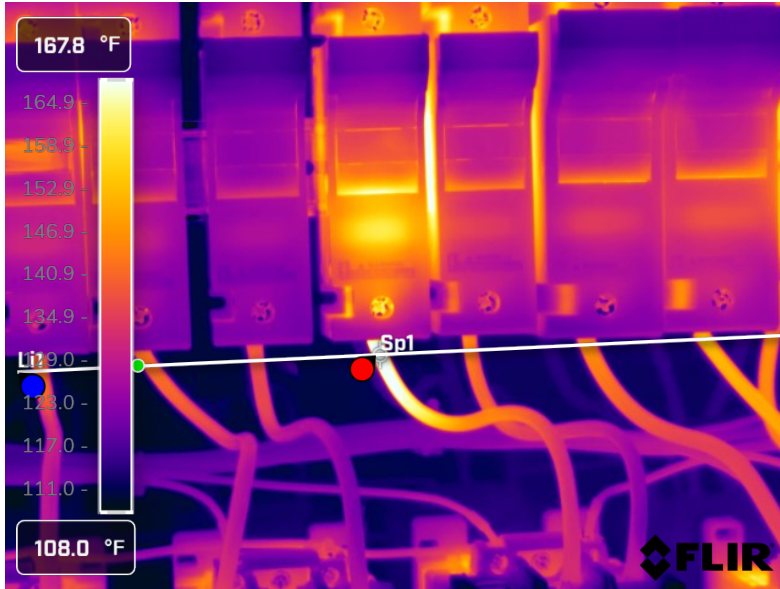
*tests and inspects industrial machinery and equipment and makes recommendations concerning maintenance and repairs based on its experience in the field of industrial repair and maintenance. The information contained herein is provided as an opinion only, not as a guaranty or warranty of the matters discussed herein.*

## Component

FB3000 Fuse and Lead connection

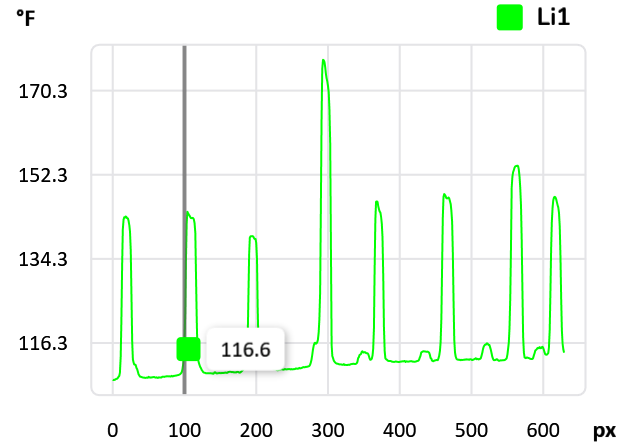
## Equipment/Bucket ID

FB3000/Fiberglass 2nd pass paint heater panel



## Measurements

<b>Li1</b>	
Max	176.9 °F
Avg	118.6 °F
Min	108.4 °F
<b>Sp1</b>	174.0 °F



## Fault

Faulty connection/fuse

## Defect Rating

**CLASS I**

## Recommendations

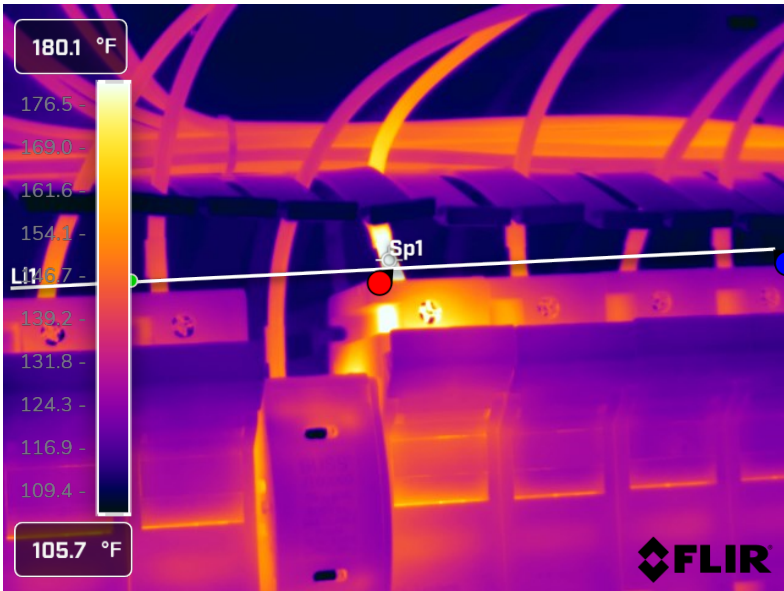
IR image shows heat on FB3000 fuse and lead connection. Fuse should be inspected and ensure lead connection has a tight and clean connection.

**Component**

FB6000 lead connection

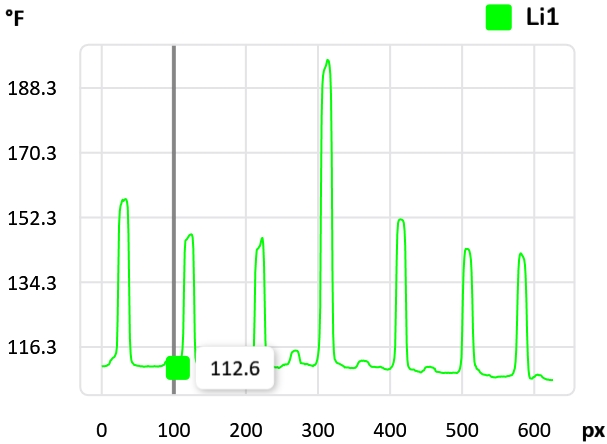
**Equipment/Bucket ID**

FB6000/Fiberglass 2nd pass paint heater panel



**Measurements**

<b>Li1</b>	
Max	196.2 °F
Avg	117.8 °F
Min	107.1 °F
Sp1	192.4 °F



**Fault**

Faulty connection

**Defect Rating**

**CLASS II**

**Recommendations**

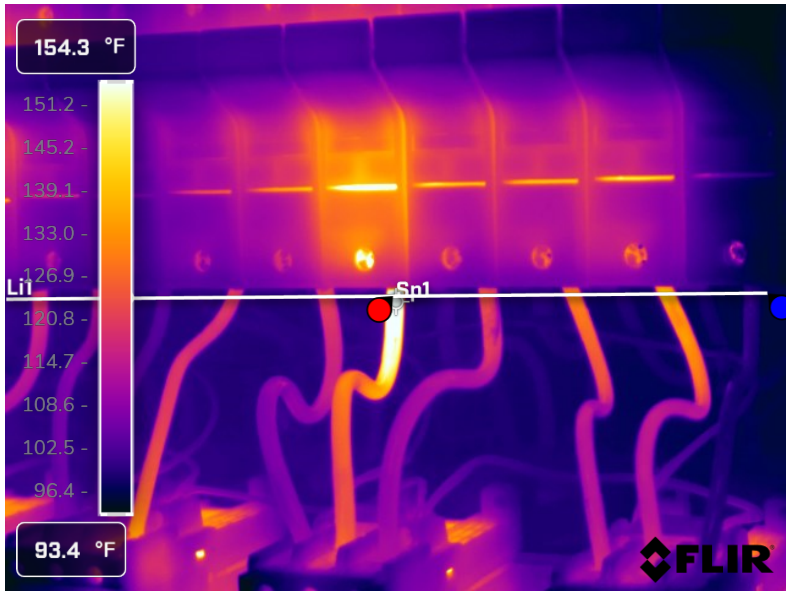
IR image shows a likely connection issue on FB6000 fuse lead connection. Check lead ensuring a clean and tight connection.

**Component**

FB1524 Fuse lead connection

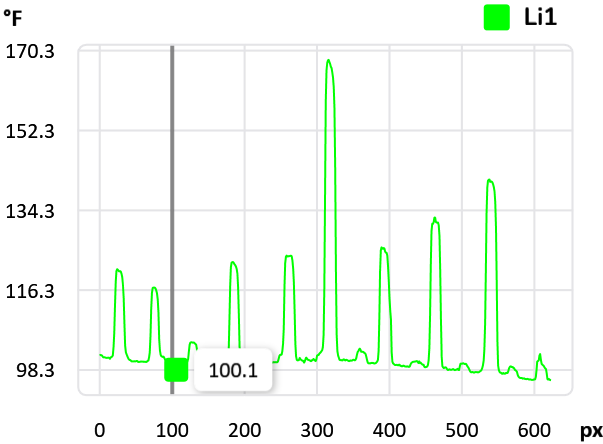
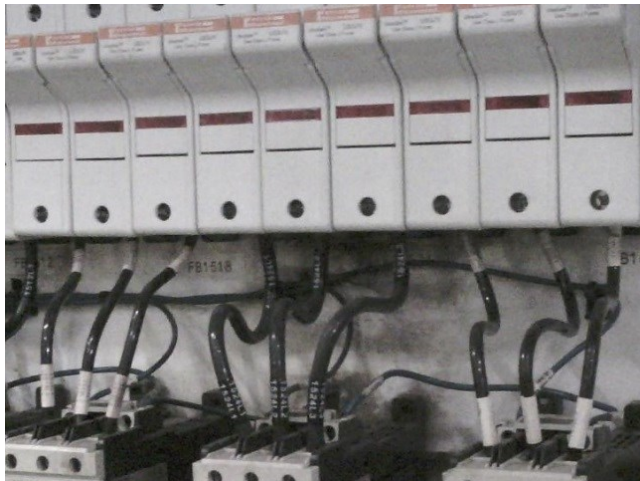
**Equipment/Bucket ID**

FB1524/Fiberglass 1st pass paint heater panel



**Measurements**

<b>Li1</b>	
Max	168.3 °F
Avg	105.5 °F
Min	96.0 °F
Sp1	165.9 °F



**Fault**

Faulty connection

**Defect Rating**

**CLASS I**

**Recommendations**

IR image shows a likely connection issue on FB1524 fuse lead connection. Check lead ensuring a clean and tight connection.

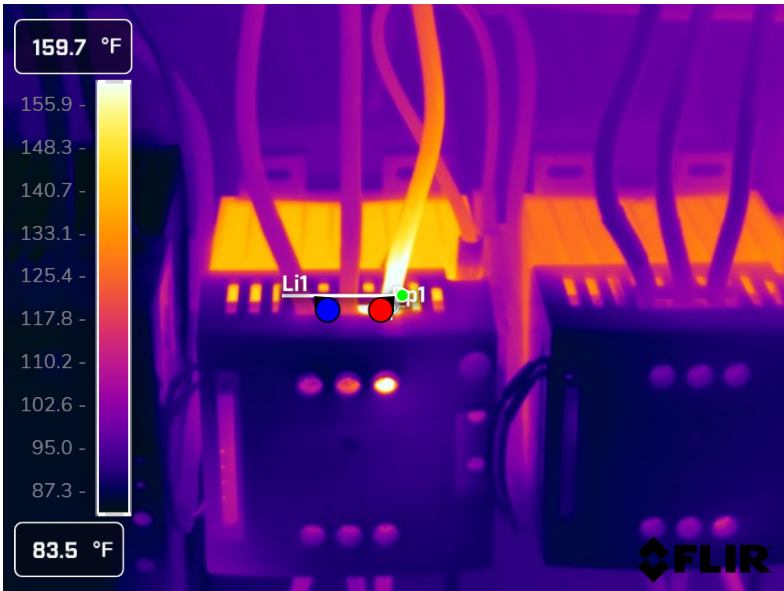


**Component**

SCR1500 lead connection

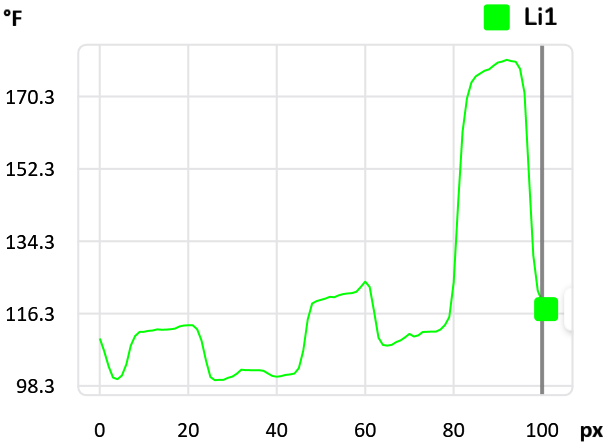
**Equipment/Bucket ID**

SCR1500/Fiberglass 1st pass paint heater panel



**Measurements**

<b>Li1</b>	
Max	179.5 °F
Avg	120.8 °F
Min	99.8 °F
Sp1	183.8 °F



**Fault**

Faulty connection

**Defect Rating**

**CLASS I**

**Recommendations**

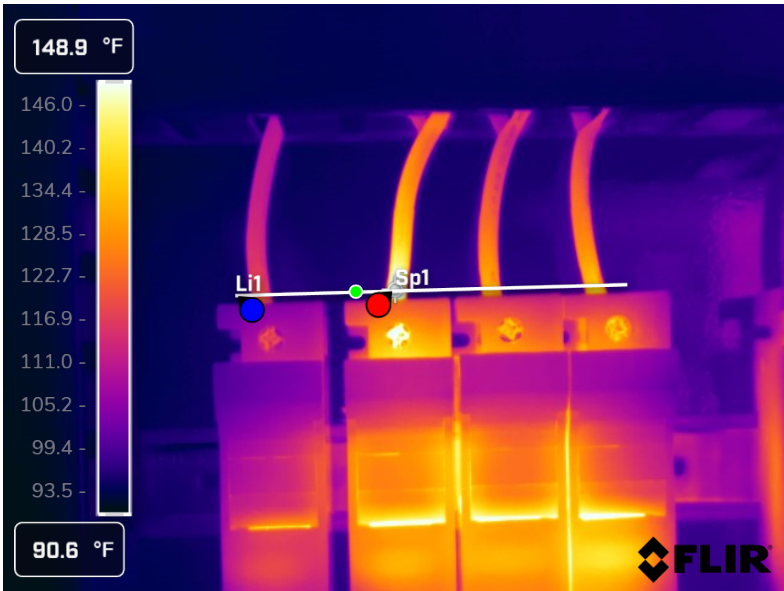
IR image shows a likely connection issue on SCR1500 lead connection. Check lead ensuring a clean and tight connection.

**Component**

FB1400 lead connection

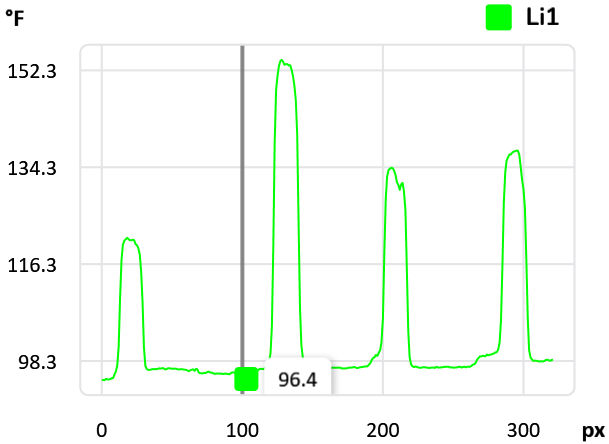
**Equipment/Bucket ID**

FB1400/Fiberglass 1st pass paint heater panel



**Measurements**

<b>Li1</b>	
Max	154.3 °F
Avg	105.3 °F
Min	94.8 °F
Sp1	153.0 °F



**Fault**

Faulty connection

**Defect Rating**

**CLASS I**

**Recommendations**

IR image shows a likely connection issue on FB1400 fuse lead connection. Check lead ensuring a clean and tight connection.



## Summary

File name	Created	Maximum temp.	Page number
FLIR0869.jpg	4/8/2021 1:39:44 AM	179.0 °F	3
FLIR0870.jpg	4/8/2021 1:45:19 AM	202.2 °F	4
FLIR0871.jpg	4/8/2021 1:51:59 AM	187.5 °F	5
FLIR0872.jpg	4/8/2021 1:52:55 AM	197.3 °F	6
FLIR0873.jpg	4/8/2021 1:54:23 AM	179.5 °F	7





This concludes our survey report. Please feel free to contact us at any time for question or comments.

Thank you for your business,

*Kevin W. Maxwell*



ITC Certified Level II Infrared  
Thermographer

(901) 486-4565

[kwilliam@gohispeed.com](mailto:kwilliam@gohispeed.com)