

# LR Field Services

Prepared for Kimberly Clark (10176-KCM)

500 Murphy Dr.  
Maumelle AR 72113

# Table of Contents

Field Service Ticket

1.0

---

Hi-Speed Industrial Service disclaims all warranties, both express and implied, relating to the information, reports, opinions and analysis disclosed to the Customer by Hi-Speed. Hi-Speed shall not be liable for any errors or omissions, or any losses, injury or damages arising from the use of such information, reports, opinions and analysis by the Customer.

Printed on 08/01/2025

Powered by [INSPECTALL](#)

*Table of Contents*



Hi-Speed Industrial Service  
7030 Ryburn Dr  
Millington, Tn 38053  
901-873-5300

## Field Service Ticket

Kimberly Clark (10176-KCM)  
500 Murphy Dr.  
Maumelle, AR 72113

FolderID: 104577  
FormID: 25157812

### Job Information

1. Hi-Speed Job Number	104577
2. Asset Type	PDMA testing on C3
3. Make	
4. Model	
5. Serial Number	
6. Customer Asset ID/Asset Name	

### Service Call Details

7. Service Objectives
8. Services Performed



Picker 1



Picker 1 before



Picker 1 after



BWE 1 before



BWE 1



BWE1 after



BWE 1



Extruded 1 before



Extruded 1 after



Extruded 2



Extruded 2 before



Extruded 2 after

Hi-Speed Industrial Service disclaims all warranties, both express and implied, relating to the information, reports, opinions and analysis disclosed to the Customer by Hi-Speed. Hi-Speed shall not be liable for any errors or omissions, or any losses, injury or damages arising from the use of such information, reports, opinions and analysis by the Customer.



*BWE 2*



*BWE 2 before*



*BWE 2 after*



*Picker 2*



*Picker 2 before*



*Picker 2 after*



*Picker 3*



*Picker 3 before*



*Picker 3 after*



*BWE 3*



*BWE 3 before*



*BWE 3 after*



*Extruder 3*



*Extruder 3 before*



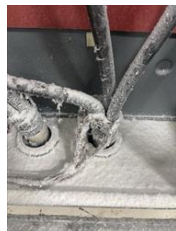
*Extruder 3 after*

## 9. Service Technician Recommendations

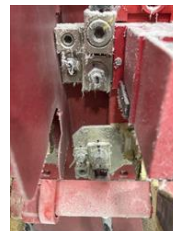
### *Vacuum out disconnect panels*



*Disconnect picket 2*



*Disconnect picker 2*



*Disconnect picker 2*



*Picker 1 disconnect*

Hi-Speed Industrial Service disclaims all warranties, both express and implied, relating to the information, reports, opinions and analysis disclosed to the Customer by Hi-Speed. Hi-Speed shall not be liable for any errors or omissions, or any losses, injury or damages arising from the use of such information, reports, opinions and analysis by the Customer.



*Picker 1 disconnect*



*Picker 1 disconnect*



*Picker 1 after clean disconnect*

### Approval Signatures

10. Service Technician Signature

11. Customer Signature