




**Unipres USA, Inc.**  
**Forest, MS**  
**June 2025 Infrared Survey Report**



All electrical panels, switches, disconnects, etc. at the Forest, MS Plant were scanned using a  **FLIR** T865 infrared camera. The following report only contains defects that were found during the survey. Below is our classification system for each defect included in this report. If there are any questions or comments, please feel free to contact us at any time.



employs a three-tier defect rating system:

**CLASS I:** A defect or defects are present that are likely to cause a problem in the long term (2-6 months). Should be addressed in the normal course of maintenance scheduling.

**CLASS II:** A defect or defects are present that are likely to cause a failure in the short term (less than 2 months). Should be addressed as soon as practical, on a high maintenance priority. Consideration should be given to increase monitoring frequency.

**CLASS III:** A defect or defects are present that make continued component reliability unpredictable and likelihood of secondary damage is high. Consideration should be given to an unscheduled shutdown to correct.



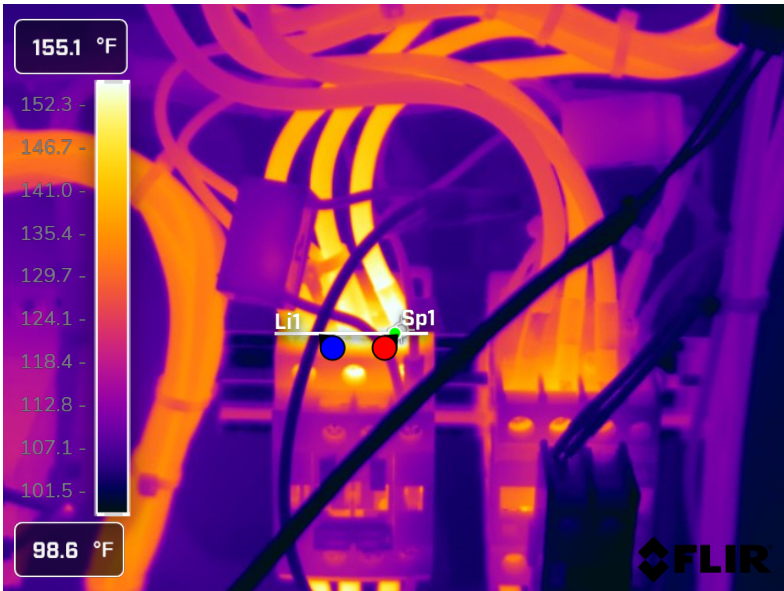
*tests and inspects industrial machinery and equipment and makes recommendations concerning maintenance and repairs based on its experience in the field of industrial repair and maintenance. The information contained herein is provided as an opinion only, not as a guaranty or warranty of the matters discussed herein.*

**Component**

C phase line side connection

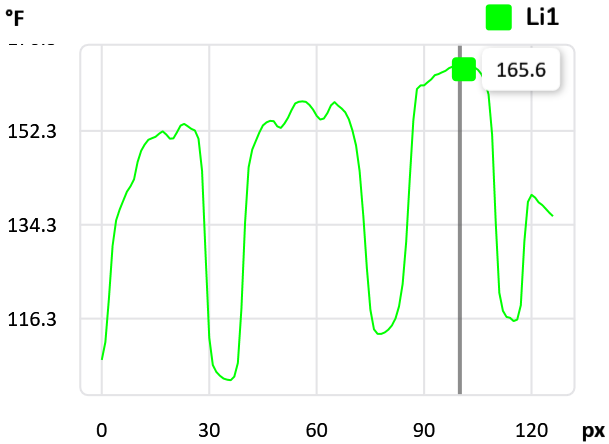
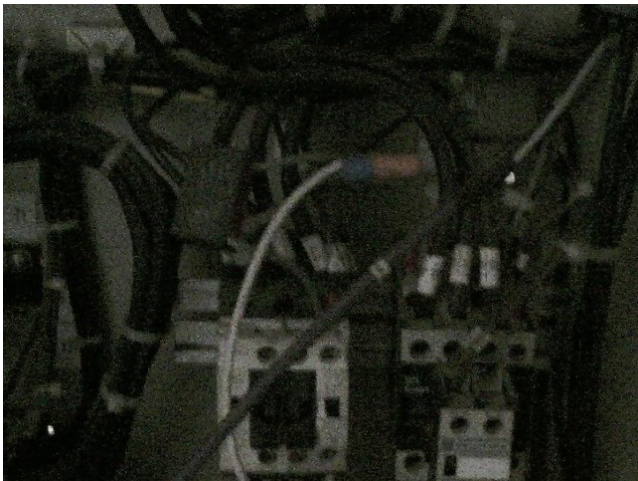
**Equipment/Bucket ID**

P-1 source: MCC 1-14



**Measurements**

<b>Li1</b>	
Max	166.0 °F
Avg	142.3 °F
Min	104.5 °F
<b>Sp1</b>	162.8 °F



**Fault**

connection issue

**Defect Rating**

**CLASS I**

**Recommendations**

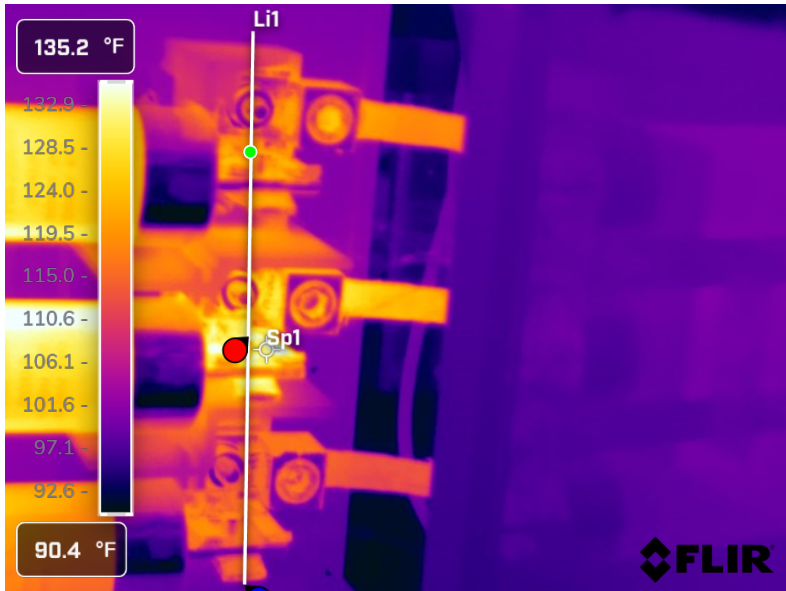
C phase lead on line side of this breaker shows to have some slight delta-T. Check connection ensuring a clean and tight connection. Inspect breaker lug connection as well.

Component

B phase fuse clip

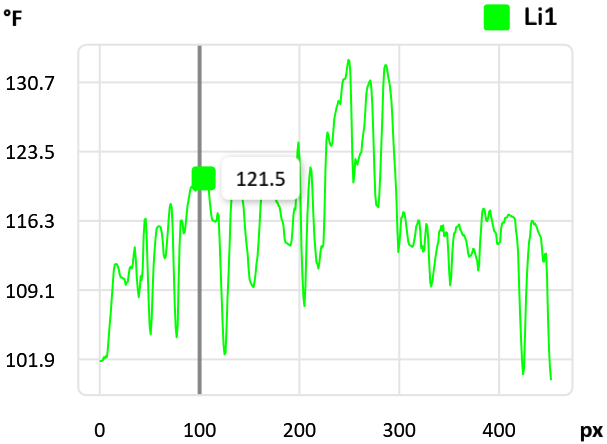
Equipment/Bucket ID

Air Compressor #3



Measurements

Li1	
Max	133.1 °F
Avg	116.0 °F
Min	99.8 °F
Sp1	131.9 °F



Fault

connection issue

Defect Rating

CLASS I

Recommendations

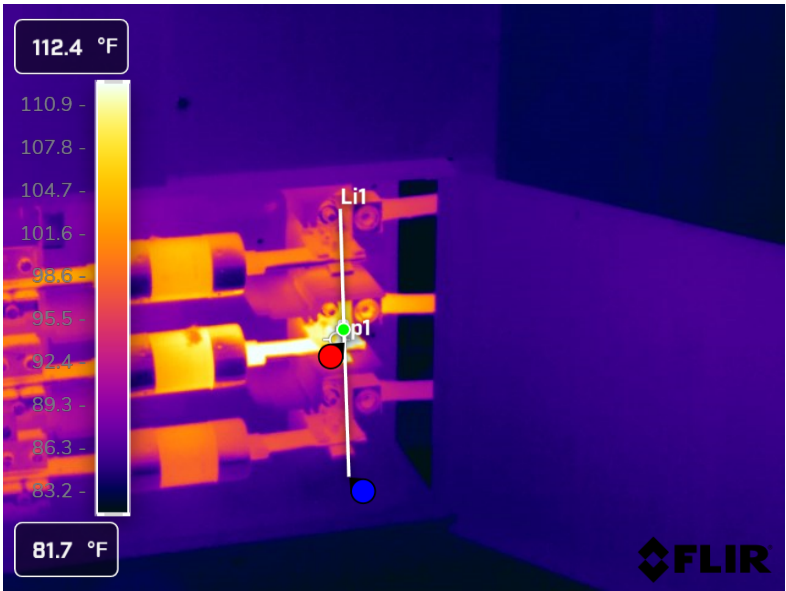
B phase fuse clip may have some connection issue. Check fuse clip for wear and ensure a clean and tight connection.

**Component**

B phase fuse

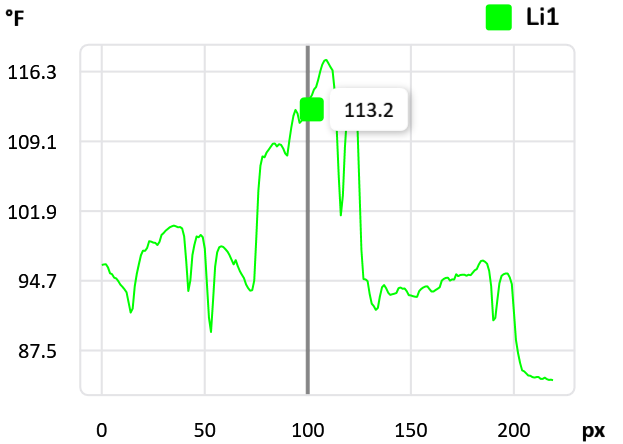
**Equipment/Bucket ID**

SB6-FS16 Dust Collector



**Measurements**

<b>Li1</b>	
Max	117.6 °F
Avg	98.2 °F
Min	84.5 °F
Sp1	111.9 °F



**Fault**

connection issue

**Defect Rating**

**CLASS I**

**Recommendations**

B phase fuse appears to have delta-T over 25 degrees F. This may be an issue with fuse clip but could also be internal issue with the fuse. Inspect fuse clip and fuse for wear and defects and ensure a clean and tight connection.

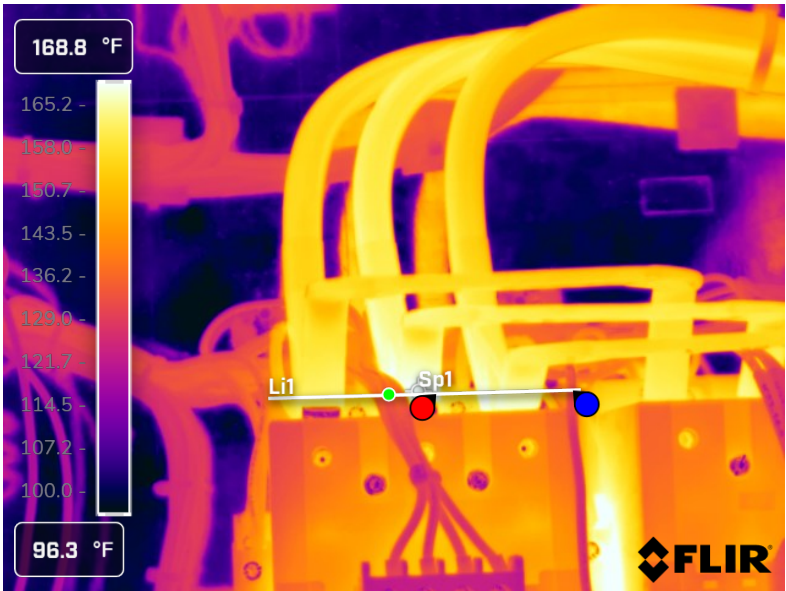


**Component**

lead connection

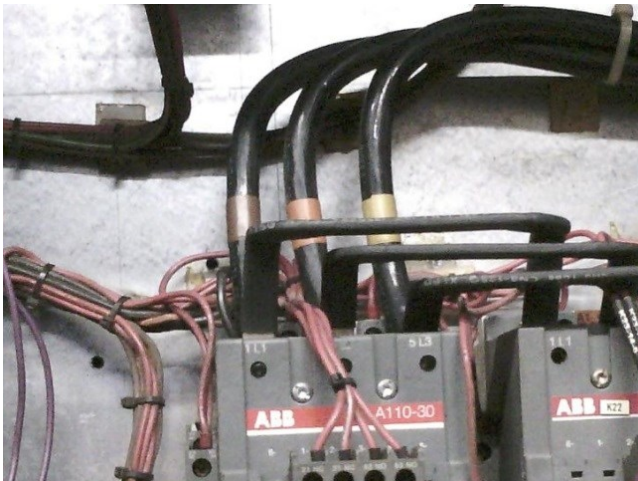
**Equipment/Bucket ID**

Air Compressor #5



**Measurements**

<b>Li1</b>	
Max	168.6 °F
Avg	156.4 °F
Min	133.4 °F
<b>Sp1</b>	168.7 °F



**Fault**

connection issue

**Defect Rating**

**CLASS I**

**Recommendations**

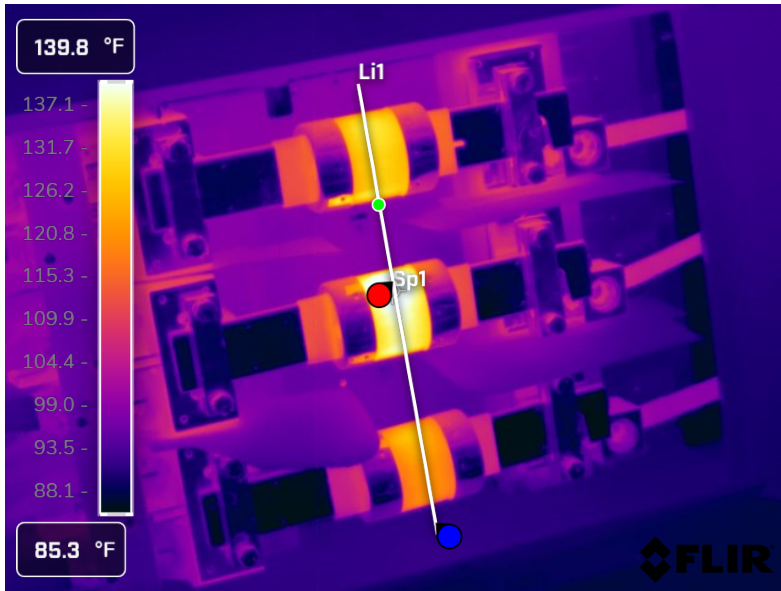
This issues appears to be minor but there may be issue with the B and C phase connections on the line side. Ensure clean and tight connections.

## Component

B phase fuse

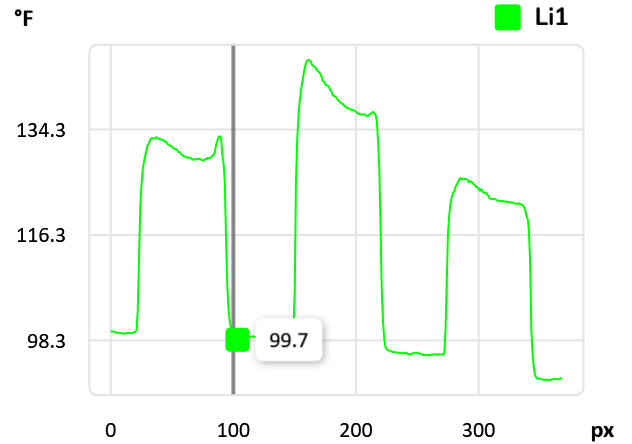
## Equipment/Bucket ID

HVAC-24



## Measurements

<b>Li1</b>	
Max	146.2 °F
Avg	116.4 °F
Min	91.5 °F
<b>Sp1</b>	144.4 °F



## Fault

Weak fuse or load imbalance

## Defect Rating

**CLASS I**

## Recommendations

B phase fuse has some delta-T on the fuse body. This may be load imbalance or a weak fuse. Check amp load on each phase and change fuse as needed.



## Summary

File name	Created	Maximum temp.	Page number
FLIR0879.jpg	4/20/2021 4:45:47 AM	167.9 °F	3
FLIR0880.jpg	4/20/2021 4:55:04 AM	137.2 °F	4
FLIR0881.jpg	4/20/2021 5:10:29 AM	117.7 °F	5
FLIR0882.jpg	4/20/2021 5:19:35 AM	174.1 °F	6
FLIR0884.jpg	4/20/2021 5:26:15 AM	146.5 °F	7





This concludes our survey report. Please feel free to contact us at any time for question or comments.

Thank you for your business,

*Kevin W. Maxwell*



ITC Certified Level II Infrared  
Thermographer

(901) 486-4565

[kwilliam@gohispeed.com](mailto:kwilliam@gohispeed.com)