




January 2025 Infrared Survey Report



All electrical panels were scanned using a  **FLIR T865** infrared camera. The following report only contains defects that were found during the survey. Below is our classification system for each defect included in this report. If there are any questions or comments, please feel free to contact us at any time.



employs a three-tier defect rating system:

CLASS I: A defect or defects are present that are likely to cause a problem in the long term (2-6 months). Should be addressed in the normal course of maintenance scheduling.

CLASS II: A defect or defects are present that are likely to cause a failure in the short term (less than 2 months). Should be addressed as soon as practical, on a high maintenance priority. Consideration should be given to increase monitoring frequency.

CLASS III: A defect or defects are present that make continued component reliability unpredictable and likelihood of secondary damage is high. Consideration should be given to an unscheduled shutdown to correct.



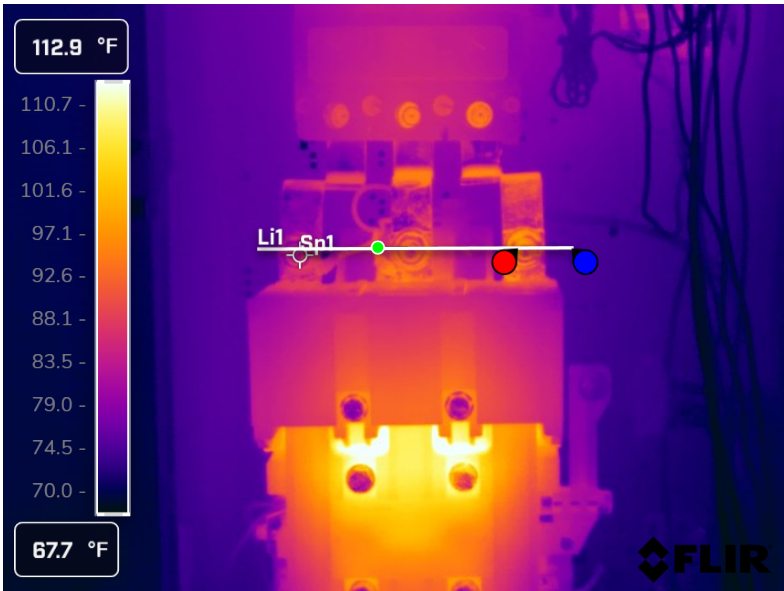
tests and inspects industrial machinery and equipment and makes recommendations concerning maintenance and repairs based on its experience in the field of industrial repair and maintenance. The information contained herein is provided as an opinion only, not as a guaranty or warranty of the matters discussed herein.

Component

RECHECK GOOD Starter Lug Connection A Phase

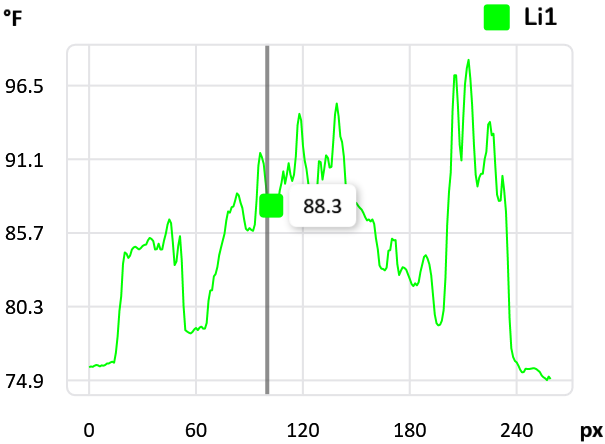
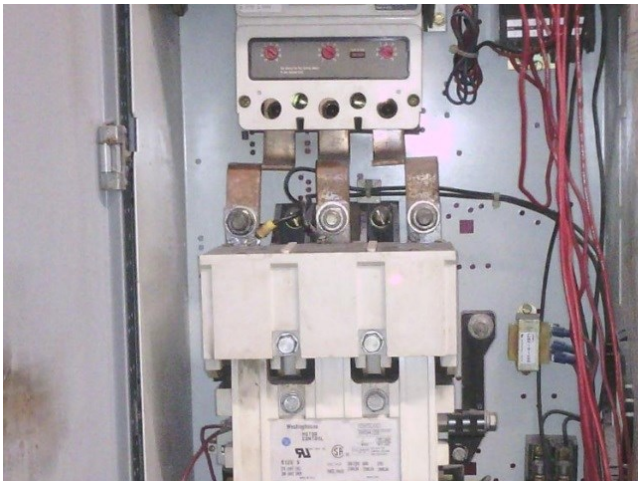
Equipment/Bucket ID

#7 Expander Dust Collector Fan M2248



Measurements

Li1	
Max	98.4 °F
Avg	85.0 °F
Min	74.9 °F
Sp1	83.2 °F



Fault

None

Defect Rating

N/A

Recommendations

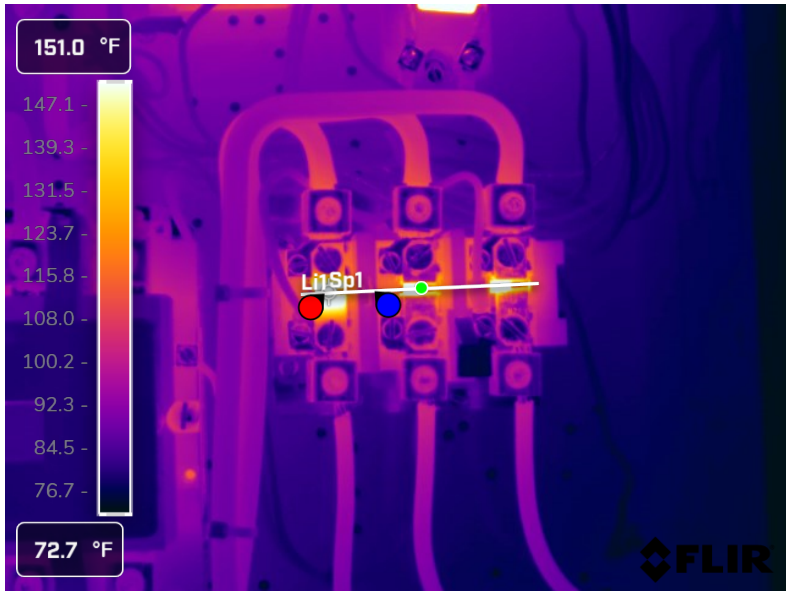
Recheck image shows no issues to report.

Component

Thermals

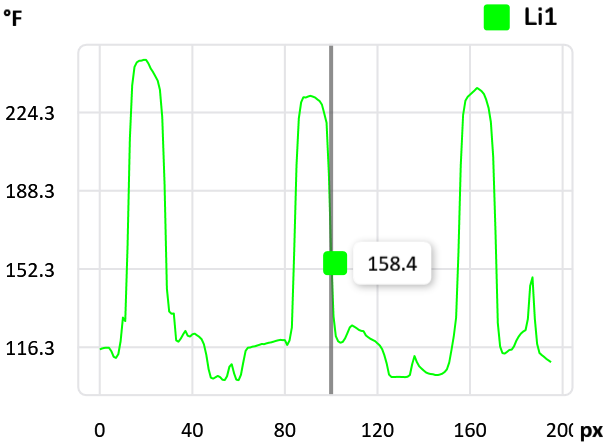
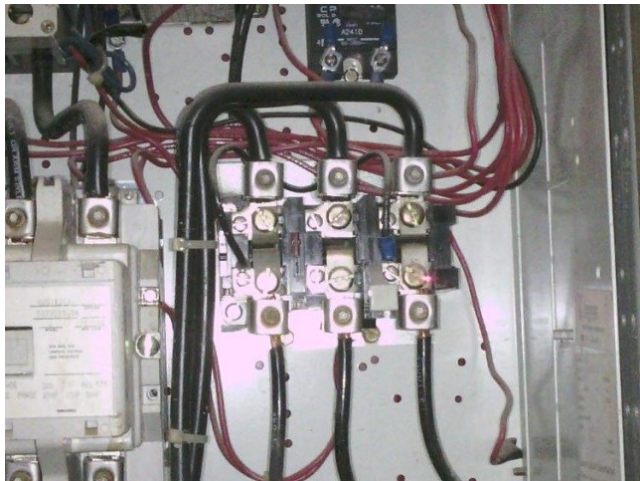
Equipment/Bucket ID

BOARD MILL Air Knife Blower M2746



Measurements

Li1	
Max	*248.6 °F
Avg	*143.6 °F
Min	101.2 °F
Sp1	*250.5 °F



Fault

Thermal Issue

Defect Rating

CLASS II

Recommendations

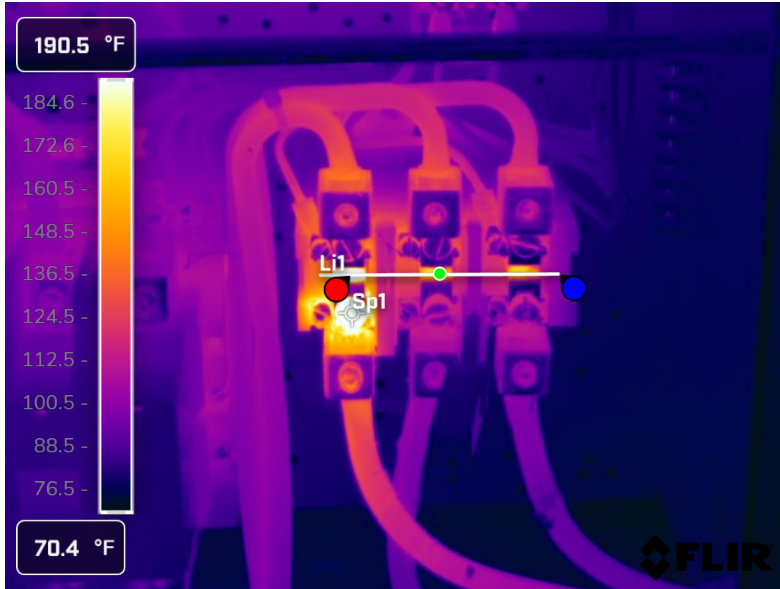
IR image shows excessive heat on the thermals especially the A phase thermal. Temps are over 260 F on A Phase. It is recommended to replace thermals soon.

Component

A phase lead connection

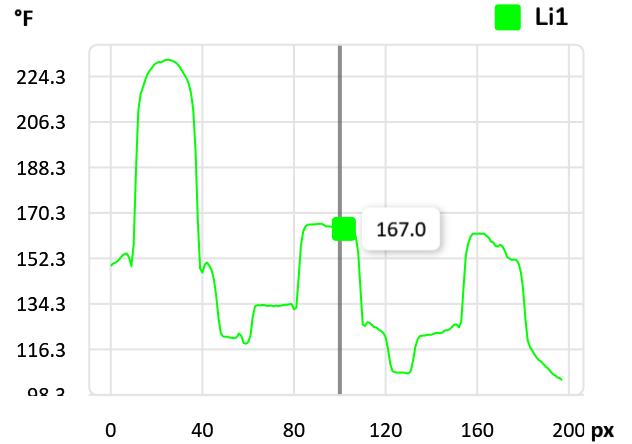
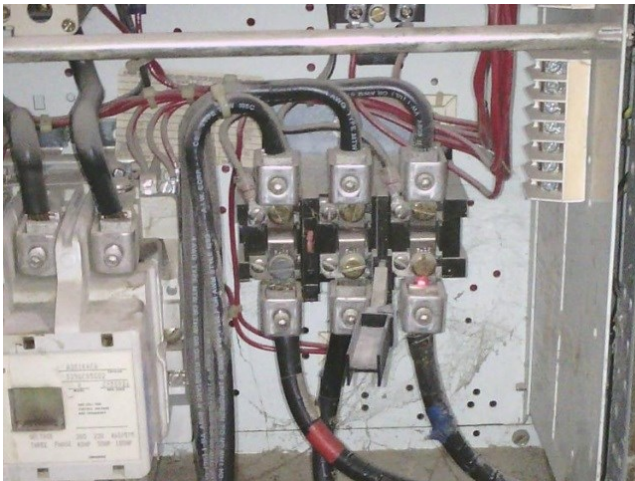
Equipment/Bucket ID

#3 Machine Whitewater Pump M1377



Measurements

Li1	
Max	230.9 °F
Avg	148.8 °F
Min	104.2 °F
Sp1	192.0 °F



Fault

Faulty connection

Defect Rating

CLASS II

Recommendations

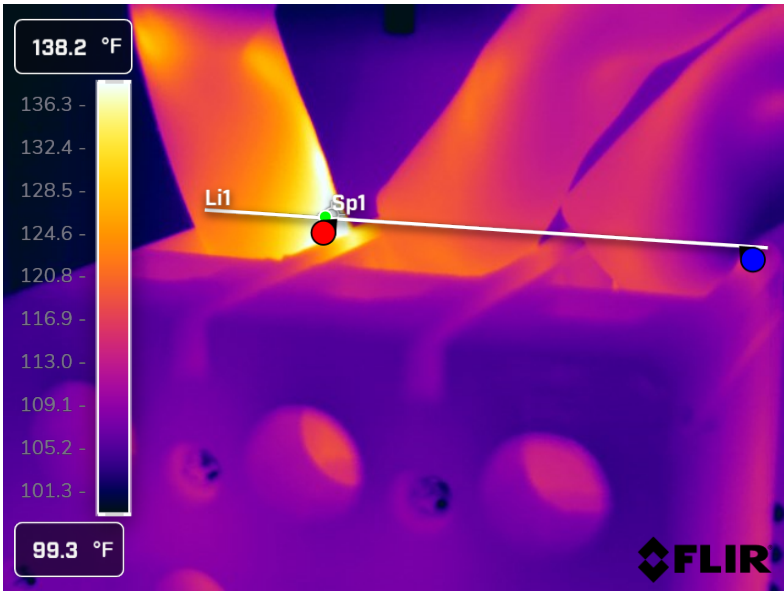
A phase connection shows to have an significant issue. Disconnect, clean, and reconnect ensuring a clean and tight connection SOON.

Component

A phase connection

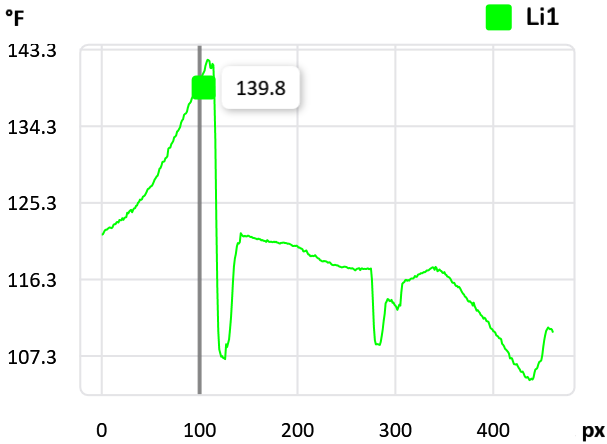
Equipment/Bucket ID

BOARD MILL Wet Zone Combustion Air Blower M5936



Measurements

Li1	
Max	142.1 °F
Avg	118.9 °F
Min	104.5 °F
Sp1	140.1 °F



Fault

Faulty connection

Defect Rating

CLASS I

Recommendations

IR image shows some localized heat on the A phase connection (line side). Disconnect, clean, and reconnect ensuring a clean and tight connection.



Summary

File name	Created	Maximum temp.	Page number
FLIR0869.jpg	1/30/2025 10:13:44 AM	121.2 °F	3
FLIR0871.jpg	1/30/2025 10:25:16 AM	253.2 °F	4
FLIR0873.jpg	1/30/2025 10:43:08 AM	231.9 °F	5
FLIR0875.jpg	1/30/2025 10:51:36 AM	148.9 °F	6



This concludes our survey report. Please feel free to contact us at any time for question or comments.

Thank you for your business,

Kevin W. Maxwell



ITC Certified Level II Infrared
Thermographer

(901) 486-4565

kwilliam@gohispeed.com