



QualiTest® Diagnostics

7030 Ryburn Dr. Millington, TN

Phone: (901) 873-5300

Fax: (901) 873-5301

www.gohispeed.com

August 8, 2025

George Young
Georgia Pacific Cellulose
Memphis, TN

George,

The following is a summary of findings from the vibration analysis on the Browstock Motor/Gearbox that was performed on 8/8/25.

QualiTest® uses a four step rating system for defects.

CLASS I: Defect is present, but effect on reliability is not clear; no immediate action is required. Continue to normally monitor.

CLASS II: Defect (s) present that may cause problem in long term (2-6 months). Repair during normal maintenance scheduling. Continue to monitor.

CLASS III: Defect (s) present that may cause failure in short term (less than 2 months). This should be addressed as soon as practical, with a high maintenance priority. Increase monitoring frequency.

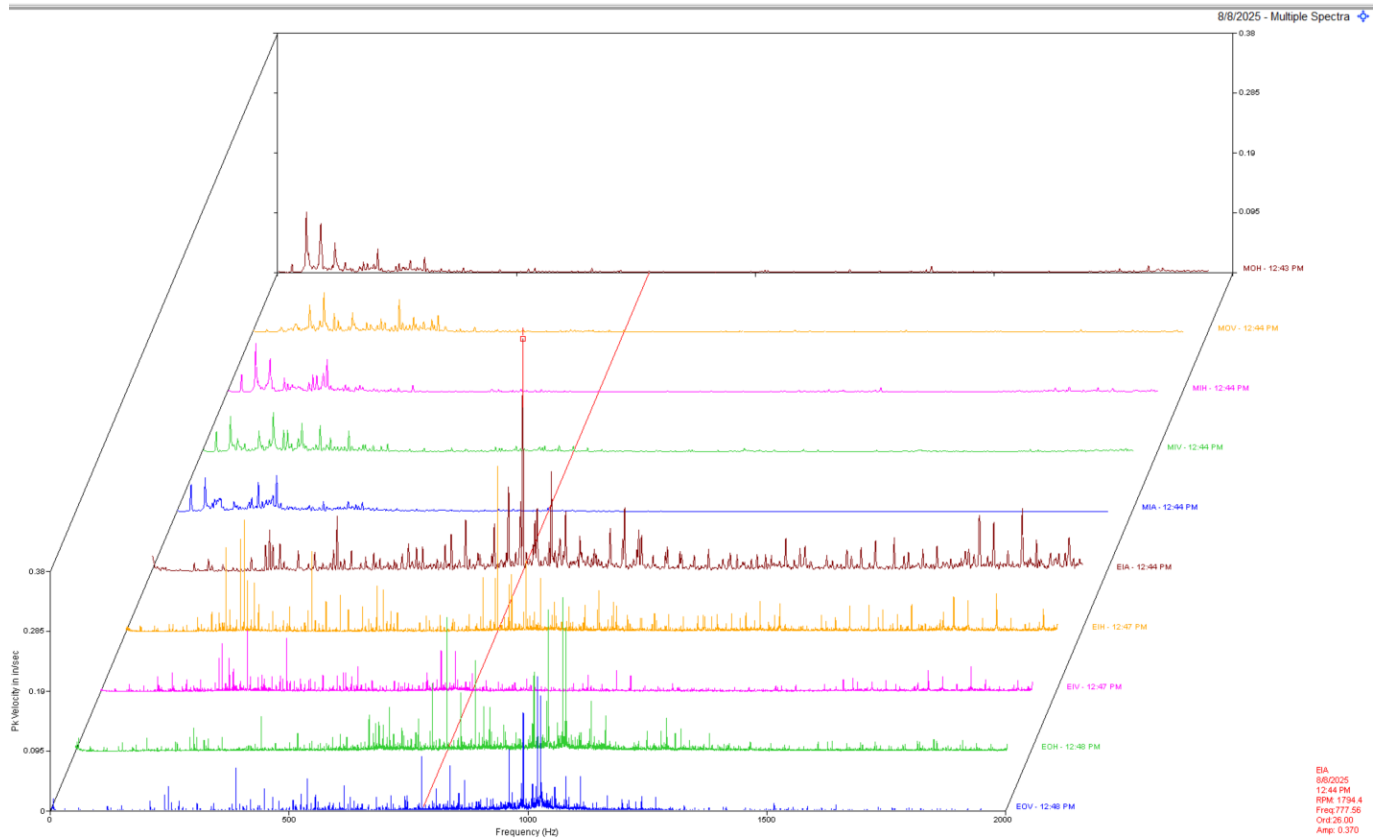
CLASS IV: Defect (s) present that makes continued reliability unpredictable, and possibility of secondary damage is high. Repairs should be made ASAP. An unscheduled shutdown should be considered for repairs

Hi-Speed Industrial Service tests and inspects industrial machinery and equipment and makes recommendations concerning maintenance and repairs based on its experience in the field of industrial repair and maintenance. The information contained herein is provided as an opinion only, not as a guaranty or warranty of the matters discussed herein.

Vibration Summary

Browstock Motor/Gearbox CLASS III

Analysis1.rbm / VIB / MACHINE 4



Observation:


Multi point waterfall spectra shows motor (MOV-MIA) and gearbox (EIA-EOV). EIA (gearbox input drive end axial) shows dominant vibration at 26 orders of rpm. This may be a gear mesh frequency if the input gear has 26 teeth or the driven gear is a multiple of this peak. Sidebands of input rpm are also present.

Recommendation:

There are sidebands of gearbox input speed around this dominant peak in gearbox spectra, which is indication of likely issues with the input gear and or input shaft. More information such as number of gear teeth, number of gears are needed to confirm diagnosis; however, worn/defective gears are suspect. The high input axial vibration is another indication of gear issues. It is recommended to perform a thorough inspection of the gearbox as soon as time allows. The amplitude of vibration in the gearbox is considered to be at high alarm level and needs attention soon.

As always, it has been a pleasure to serve GP Cellulose Memphis Plant. If there are any comments or questions, do not hesitate to contact us.

Sincerely,

A handwritten signature in black ink that reads "Kevin W. Maxwell". The signature is fluid and cursive, with the first name "Kevin" and last name "Maxwell" clearly legible.

ISO Certified Vibration Analyst, Category III



QualiTest® *Diagnostics*

Cell: 901-486-4565

Email: kwilliam@gohispeed.com