

LR Field Services

Prepared for Central AR Water- Lake Maumelle(10195-08)

10629 Hwy 300
Roland AR 72135

Table of Contents

Field Service Ticket

1.0

Hi-Speed Industrial Service disclaims all warranties, both express and implied, relating to the information, reports, opinions and analysis disclosed to the Customer by Hi-Speed. Hi-Speed shall not be liable for any errors or omissions, or any losses, injury or damages arising from the use of such information, reports, opinions and analysis by the Customer.

Printed on 07/29/2025

Powered by [INSPECTALL](#)

Table of Contents



Hi-Speed Industrial Service
7030 Ryburn Dr
Millington, Tn 38053
901-873-5300

Field Service Ticket

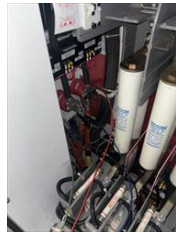
FolderID: 103866
FormID: 25250250

Central AR Water- Lake Maumelle
(10195-08)

10629 Hwy 300
Roland, AR 72135

Job Information


- | | |
|---------------------------------|--------|
| 1. Hi-Speed Job Number | 103866 |
| 2. Asset Type | |
| 3. Make | |
| 4. Model | |
| 5. Serial Number | |
| 6. Customer Asset ID/Asset Name | |



Service Call Details

- | |
|--|
| 7. Service Objectives |
| 8. Services Performed
<i>PDMA testing</i> |
| 9. Service Technician Recommendations |

Approval Signatures

- | | |
|---|--------------|
| 10. Service Technician Signature | Shon Jones |
|  | |
| 11. Customer Signature | Chad Roberts |

Hi-Speed Industrial Service disclaims all warranties, both express and implied, relating to the information, reports, opinions and analysis disclosed to the Customer by Hi-Speed. Hi-Speed shall not be liable for any errors or omissions, or any losses, injury or damages arising from the use of such information, reports, opinions and analysis by the Customer.

MR