



KEEPING YOUR FACILITY UP TO SPEED
— EVERY DAY SINCE 1946 —

LR Motor Shop Repairs

Job Number 102768

Prepared for Miller Spectacular Shows (12776)

79 Mountain Drive
Greenbrier AR 72058

Table of Contents

AC Inspection as Found - *LITTLE ROCK MOTOR
SHOP*

AC Inspection - Rev. 2: 132

1.0

Hi-Speed Industrial Service disclaims all warranties, both express and implied, relating to the information, reports, opinions and analysis disclosed to the Customer by Hi-Speed. Hi-Speed shall not be liable for any errors or omissions, or any losses, injury or damages arising from the use of such information, reports, opinions and analysis by the Customer.

Printed on 6/13/2024

Powered by [INSPECTALL](#)

Table of Contents



Hi-Speed Industrial Service
7030 Ryburn Dr
Millington, Tn 38053
901-873-5300

AC Inspection as Found
Miller Spectacular Shows (12776)
79 Mountain Drive
Greenbrier, AR 72058

FolderID: 102768
FormID: 20121649

AC Inspection - Rev. 2

Location: LITTLE ROCK MOTOR SHOP

Serial Number: 132

Description: 4.5KW ROWAN ELECTRONICA

Hi-Speed Job Number: 102768

Manufacturer: Other

Product Number: M: 45295

Spec/ID #: 45295

Serial Number: 132

HP/kW: 4.5 (kW)

RPM: 700 (RPM)

Voltage: Other

Current: 33 (Amps)

Phase: Three

Hz: 60 (Hz)

of Leads: 6

J-box Included: Complete

Date Received: 04/23/2024

Bearing RTDs: No

Stator RTDs: No

Repair Stage: Final

Rewind: Yes

Shaft Machined Fit Repairs Required: Yes

Bearing Housing Machined Fit Repairs Required: Yes

Heaters: No

Winding Type : Random Wound

Bearing Type: Rolling Element

Priorities Found: **6 - High** **3 - Good**

Overall Condition

1. Report Date

04/23/2024

Hi-Speed Industrial Service disclaims all warranties, both express and implied, relating to the information, reports, opinions and analysis disclosed to the Customer by Hi-Speed. Hi-Speed shall not be liable for any errors or omissions, or any losses, injury or damages arising from the use of such information, reports, opinions and analysis by the Customer.

Printed on 6/13/2024

Powered by **INSPECTALL**

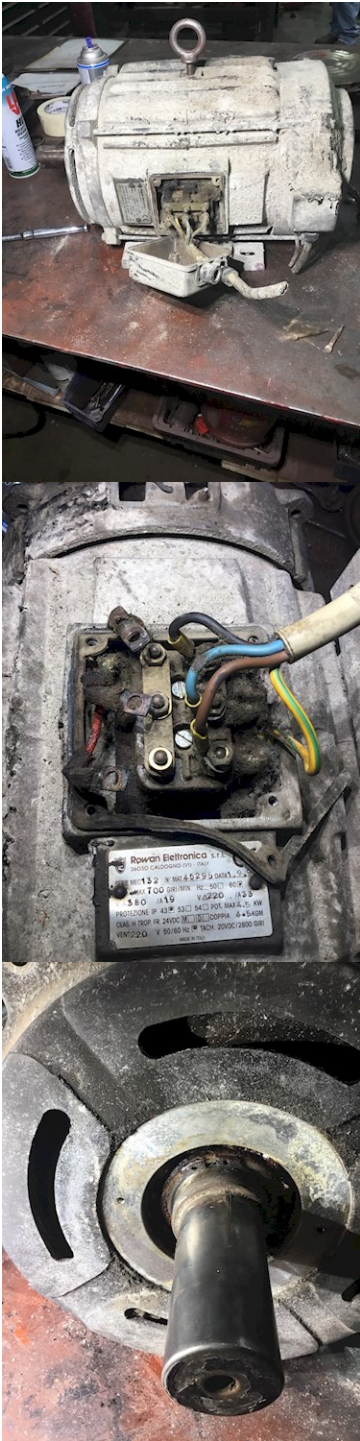
1.0

2. Nameplate Picture



3. Photos of all six sides of the machine.





Hi-Speed Industrial Service disclaims all warranties, both express and implied, relating to the information, reports, opinions and analysis disclosed to the Customer by Hi-Speed. Hi-Speed shall not be liable for any errors or omissions, or any losses, injury or damages arising from the use of such information, reports, opinions and analysis by the Customer.

Printed on 6/13/2024

Powered by [INSPECTALL](#)

1.2



Hi-Speed Industrial Service disclaims all warranties, both express and implied, relating to the information, reports, opinions and analysis disclosed to the Customer by Hi-Speed. Hi-Speed shall not be liable for any errors or omissions, or any losses, injury or damages arising from the use of such information, reports, opinions and analysis by the Customer.

Printed on 6/13/2024

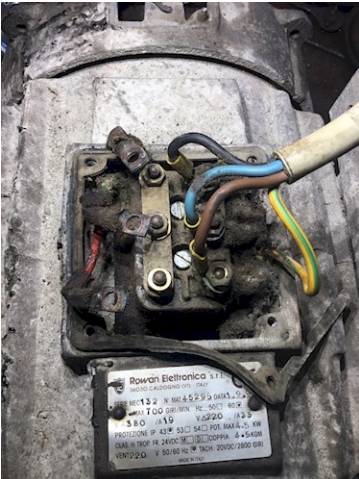
Powered by [INSPECTALL](#)

1.3








4.	Describe the Overall Condition of the Equipment as Received	
	<i>Serviceable</i>	
5.	Distance from the end of the shaft to the Coupling/Sheave	inches
	<i>Na</i>	
Initial Mechanical/Electrical		
6.	Does Shaft Turn Freely?	(Y) Yes
7.	Does the shaft require T.I.R in Lathe to identify additional repairs?	(Yes) Yes
	<i>Both shaft fits bad.</i>	
8.	Does Shaft Have Visible Damage?	(No) No
9.	Assembled Shaft Runout	0.001 Inches
10.	Assembled Shaft End Play	0 inches
11.	Air Gap Variation <10%	
	<i>Na</i>	
12.	Lead Condition	(P) Pass
13.	Lead Length	Inches



14.	Does it have Lugs?, If so what is the Stud Size?	(Yes) Yes
15.	Lead Numbers	1-6
16.	Frame Condition	pass
17.	Fan Condition	(N) NA
18.	Broken or Missing Components	tach broken

Initial Electrical Inspection

Hi-Speed Industrial Service disclaims all warranties, both express and implied, relating to the information, reports, opinions and analysis disclosed to the Customer by Hi-Speed. Hi-Speed shall not be liable for any errors or omissions, or any losses, injury or damages arising from the use of such information, reports, opinions and analysis by the Customer.

19. Insulation Resistance/Megger	Megohms	
 Na		
20. Winding Resistance		
1-2	1-3	2-3
 Na		
21. Perform Surge Test		
 Na		
22. Number of Stator Slots	36	
23. Stator Condition	rewind	
24. Stator Thermistors/Ohms	na	
25. Stator Overloads/Ohms	na	
Mechanical Inspection		
26. Drive End Bearing Brand	SKF	
27. Drive End Bearing Number-	6209	




28. Drive End Bearing Qty.	1
29. Drive End Bearing Type	(Ball) Ball Bearing
30. Drive End Lubrication Type	(Grease) Grease Lubricated
31. Drive End Bearing Insulation or Grounding Device?	none
32. Drive End Wavy Washer/Snap-Ring Other Retention Device?	snap rings
33. Drive End Bearing Condition	replace
34. Opposite Drive End Bearing Brand	nsk




Hi-Speed Industrial Service disclaims all warranties, both express and implied, relating to the information, reports, opinions and analysis disclosed to the Customer by Hi-Speed. Hi-Speed shall not be liable for any errors or omissions, or any losses, injury or damages arising from the use of such information, reports, opinions and analysis by the Customer.

35. Opposite Drive End Bearing Number-	6207
36. Opposite Drive End Bearing Qty.	1

37. Opposite Drive End Bearing Type	(Ball) Ball Bearing
38. Opposite Drive End Lubrication Type	(Grease) Grease Lubricated
39. Opposite Drive End Bearing Insulation or Grounding Device?	none
40. Opposite Drive End Wavy Washer/Snap-Ring Other Retention Device?	wavy washer
41. Opposite Drive End Bearing Condition	replace
42. Drive End Seal	na
43. Opposite Drive End Seal	na

Rotor Inspection

44. Rotor Type/Material	<div>  Solid rotor with no bars </div>
-------------------------	---

45. Growler Test	<div>  Na </div>
46. Number of Rotor Bars	<div>  Na </div>
47. Rotor Condition	<div>  Pass </div>
48. List the Parts needed for the Repair Below	New tach needed. Rewind stator. Re-sleeve both housing fits.

49. Signature of Technician that Disassembled Motor

Terrence Holland



Mechanical Fits- Rotor

50. Shaft Runout 0.002 inches

51. Rotor Runout

Drive End Bearing Fit

Rotor Body

Opposite Drive End Bearing

Na

52. Coupling Fit Closest to Bearing Housing

0 Degrees

90 Degrees

120 Degrees

Na

53. Coupling Fit Closest to the end of the Shaft

0 Degrees

60 Degrees

120 Degrees

Na

54. Drive End Bearing Shaft Fit

0 Degrees

60 Degrees

120 Degrees

1.771

1.771

1.7711

55. Drive End Bearing Shaft Fit Condition (F) Fail

Minimum allowed is 1.7718

56. Opposite Drive End Bearing Shaft Fit

0 Degrees

60 Degrees

120 Degrees

1.3778

1.3777

1.3777

57. Opposite Drive End Bearing Shaft Fit Condition (F) Fail

Minimum allowed is 1.3781



58. Shaft Air Seal Fits

Drive End Air Seal

Opposite Drive End Air Seal

Na

Mechanical Fits- Bearing Housings

59. Drive End - Endbell Bearing Fit		
0 Degrees	60 Degrees	120 Degrees
		
<div><div></div><div>60. Drive End - Endbell Bearing Fit Condition</div><div><div></div><div>Excessive wear.</div></div></div>		(F) Fail
61. Opposite Drive End - Endbell Bearing Fit		
0 Degrees	60 Degrees	120 Degrees
		
<div><div></div><div>62. Opposite Drive End - Endbell Bearing Fit Condition</div><div><div></div><div>Excessive wear and pitting.</div></div></div>		(F) Fail
63. Bearing Cap Condition		
Drive End Bearing Cap		Opposite Drive End Bearing Cap
na		na
64. End Bell Air Seal Fits		
Drive End Air Seal		Opposite Drive End Air Seal
<div><div></div><div>Na</div></div>		
65. List Machine Work Needed Below		
Sleeve both housing fits and shaft bearing journals. Remove 2 ea. broken bolts on tach connection box cover.		
66. Technician		Terrence Holland

Witness: D. Macklin

Root Cause of Failure

67. Failure locations

Both shaft bearing journals bad. Both housing fits bad. Re- attach broken end bell piece. Rewind stator.

68. Root cause of failure

Bearing grease contaminated. Winding strings are all broken and dry rotted.

Dynamic Balance Report

69. Rotor Weight and Balance Grade

Rotor Weight

Balance Grade

70. Initial Balance Readings

Drive End

Opposite Drive End

71. Final Balance Readings

Drive End

Opposite Drive End

72. Technician

Rewind

73. Core Test Results - Watts loss per Pound

Pre-Burnout

Post Burnout

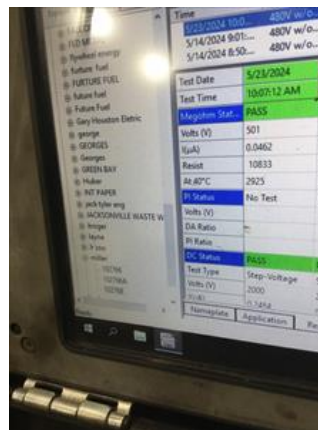
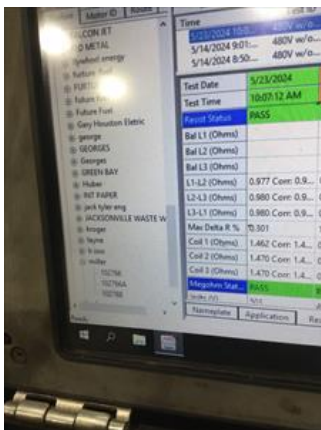
74. Core Hot Spot Test

Pre-Burnout

Post-Burnout

75. Post Rewind Electrical Test- Insulation Resistance

Megohms



76. Post Rewind Polarization Index

Polarization Index

Hi-Speed Industrial Service disclaims all warranties, both express and implied, relating to the information, reports, opinions and analysis disclosed to the Customer by Hi-Speed. Hi-Speed shall not be liable for any errors or omissions, or any losses, injury or damages arising from the use of such information, reports, opinions and analysis by the Customer.

2-3



0.001

120 Degrees

120 Degrees

1.11

85. Drive End Bearing Shaft Fit Post Repair		
0 Degrees	60 Degrees	120 Degrees
1.7722	1.7722	1.7722



86. Opposite Drive End Bearing Shaft Fit Post Repair		
0 Degrees	60 Degrees	120 Degrees
1.3784	1.3783	1.3783





87. Shaft Air Seal Fits Post Repair		
Drive End Air Seal	Opposite Drive End Air Seal	
88. Shaft Repair Sign-off		Gary
Mechanical Fits- Bearing Housings - Post Repair		

89. Drive End - Endbell Bearing Fit Post Repair		
0 Degrees	60 Degrees	120 Degrees
3.3466	3.3466	3.3466



90. Opposite Drive End - Endbell Bearing Fit Post Repair		
0 Degrees	60 Degrees	120 Degrees
2.8346	2.8346	2.8346



91. Bearing Cap Condition Post Repair		
Drive End Bearing Cap	Opposite Drive End Bearing Cap	
92. End Bell Air Seal Fits Post Repair		
Drive End Air Seal	Opposite Drive End Air Seal	
93. End Bell Repair Sign-off		
		Gary
Assembly		
94. QC Check All Parts for Cleanliness Prior to Assembly		RW
		
95. Photograph All Major Components prior to assembly		
96. Final Insulation Resistance Test		Megohms
 Passed hi pot		

Hi-Speed Industrial Service disclaims all warranties, both express and implied, relating to the information, reports, opinions and analysis disclosed to the Customer by Hi-Speed. Hi-Speed shall not be liable for any errors or omissions, or any losses, injury or damages arising from the use of such information, reports, opinions and analysis by the Customer.

97. Assembled Shaft Endplay	inches	
98. Assembled Shaft Runout	inches	
99. Test Run Voltage		
Volts	Volts	Volts
375	375	377



Co witness TRH

100. Test Run Amperage		
Amps	Amps	Amps
18	17.8	14.7



101. Drive End Vibration Readings - Inches Per Second		
Horizontal	Vertical	Axial
102. Opposite Drive End Vibration Readings - Inches Per Second		
Horizontal	Vertical	Axial
103. Ambient Temperature - Fahrenheit		
104. Drive End Bearing Temps - Fahrenheit		
5 Minutes	10 Minutes	15 Minutes
105. Opposite Drive End Bearing Temps - Fahrenheit		
5 Minutes	10 Minutes	15 Minutes

Hi-Speed Industrial Service disclaims all warranties, both express and implied, relating to the information, reports, opinions and analysis disclosed to the Customer by Hi-Speed. Hi-Speed shall not be liable for any errors or omissions, or any losses, injury or damages arising from the use of such information, reports, opinions and analysis by the Customer.

106. Document Final Condition with Pictures after paint



107. Final Pics and QC Review

RW

A handwritten signature in black ink, appearing to be 'RW' or similar, written over a white background.

Co witness CRW



STANDARD TERMS AND CONDITIONS FOR PURCHASE OF GOOD AND/OR SERVICES

1. **APPLICABILITY.** The sale of any and all goods and/or services by Mock, Inc. d/b/a Hi-Speed Industrial Service ("Hi-Speed") shall be specifically conditioned upon and subject to the following terms and conditions which are incorporated by reference into any contracts and purchase orders with Hi-Speed, and which shall form and become a part of any agreement related thereto. Buyer's acceptance of any offer or quotation made by Hi-Speed for sale of any goods or services is expressly made subject to the terms and conditions set forth herein and to be so effective, Buyer need not sign or approve these Terms and Conditions to be bound hereunder provided a copy of same is provided to Buyer through any means. None of the terms and conditions contained herein may be added to, expanded, changed, modified, superseded or otherwise altered except as revised in writing and duly executed by Hi-Speed, and all orders received by Hi-Speed shall be governed only by the terms and conditions contained herein, notwithstanding any terms, conditions or provisions of any purchase order, release order, authorization or any other form issued by the Buyer. Hi-Speed hereby objects to any additional, modified, changed, deleted, altered or other terms and conditions not contained herein and notifies Buyer that any such terms or provisions are expressly rejected by Hi-Speed.
2. **PRICE.** All quoted prices shall remain firm and binding for a period of thirty (30) days from the date of quotation or for the period specifically stated in the quotation. The price for any and all goods and/or services ordered or approved by Buyer after thirty (30) days from the date of any quotation are subject to any increase in price that may occur after the expiration of thirty (30) days from the issuance of the quotation and the date the Buyer releases any shipment.
3. **SCOPE OF GOODS AND/OR SERVICES.** The goods and/or services provided by Hi-Speed pursuant to any quotation shall be limited exclusively to those goods and/or services expressly identified therein. Hi-Speed does not assume any responsibility and/or liability for the failure to provide any other goods and/or services not identified in any quotation. Modifications, additions or deletions to or from the scope referenced in any quotation shall only be effective if evidenced in writing and signed by Hi-Speed. The sale of any of all goods and/or services affected by such modification, addition or deletion shall be subject to these same Standard Terms and Conditions whether or not referenced therein.
4. **BILLING AND PAYMENT TERMS.** Hi-Speed shall invoice Buyer for all goods and/or services as same are rendered at the address listed on the quotation. Payments for all goods and/or services shall be due thirty (30) days from the date of the current invoice or as otherwise set forth in the quotation. Late payments are subject to a late fee of 5% of the total invoice amount. Recurring late payments may lead to a deposit requirement on future services or sale of goods. Buyer shall be liable to Hi-Speed for any and all fees and expenses incurred by Hi-Speed to collect any invoices or to enforce these Standard Terms and Conditions, including but not limited to, attorney's fees.
5. **DELIVERY OF GOODS AND/OR SERVICES.** Unless otherwise identified in the quotation, all shipments are F.O.B. Hi-Speed's warehouse and the title to and all risk of loss with respect to any goods shipped shall pass to Buyer when such goods are delivered to the carrier at Hi-Speed's warehouse. Hi-Speed will use its best efforts to affect delivery by the date or dates specified in the quotation. However, Hi-Speed shall not be liable for delay in or failure to make shipment, or to perform services, by any identified date for any reason whatsoever, including but not limited to, causes beyond its reasonable control, such as strikes, fires, floods, epidemics, quarantines, restrictions, severe weather, embargos, acts of God, or public enemy, war, riot, delays in transportation or the inability to obtain necessary labor, materials or manufacturing facilities.
6. **DELIVERY SITE AND TIME FOR PERFORMANCE.** Hi-Speed and Buyer agree that time is of the essence for the purchase order and that Buyer shall fully cooperate with Hi-Speed in order to allow Hi-Speed full access to prosecute its work diligently and in an orderly manner. Buyer shall assist Hi-Speed in every way possible to avoid delaying, disrupting or interfering with the progress of Hi-Speed's work at the project site. In the event Hi-Speed's work is delayed, hindered, suspended, disrupted, re-sequenced or interfered with or rendered less efficient or more costly or adversely affected in any way as a result of acts or omissions of Buyer or other contractors or employees of Buyer or by any other reason beyond Hi-Speed's control and without the fault of Hi-Speed, then, in such event, Buyer shall be liable to Hi-Speed for any damages, additional costs, expenses, labor, materials, man hours, acceleration costs, overtime, additional jobsite overhead, extended home office overhead, and any and all other direct and indirect expenses of whatsoever nature or kind, caused in whole or in part, as a result of any of the above-referenced occurrences. Hi-Speed's project records will be the basis for computing the additional costs and damages of Hi-Speed's labor, materials, expenses and overhead related to such changes. BUYER WARRANTS THAT THE SITE FOR DELIVERY OR INSTALLATION OF ANY GOODS AND/OR FOR THE PERFORMANCE OF ANY SERVICES SHALL BE READY AND ADEQUATE FOR HI-SPEED'S DELIVERY OF GOODS AND/OR PERFORMANCE OF SERVICES AND THAT HI-SPEED SHALL HAVE FULL ACCESS THERETO, FREE OF ALL OBSTRUCTIONS. BUYER SHALL ASSUME ALL EXTRA COSTS ASSOCIATED WITH HI-SPEED'S INABILITY TO INSTALL ANY GOODS OR PERFORM ANY SERVICES AS A RESULT OF BUYER'S FAILURE TO COMPLY WITH THIS PROVISION. HI-SPEED MAY NOT INSPECT THE SITE PRIOR TO DELIVERY AND/OR INSTALLATION OF GOODS AND/OR PERFORMANCE OF SERVICES AND MAKES NO WARRANTY AS TO THE SUFFICIENCY OF THE SITE FOR THE DELIVERY AND/OR INSTALLATION OF GOODS AND/OR THE PERFORMANCE OF SERVICES AT SUCH SITE.
7. **INSPECTION/ACCEPTANCE.** All goods and services ordered pursuant to any quotation shall be subject to inspection by Buyer after delivery or performance to determine conformity with the quotation and/or purchase order and Hi-Speed's advertised or published specifications. Buyer shall have a period of thirty (30) days from shipment of goods at the delivery destination specified in the quotation within which to inspect the goods for conformity with the quotation, order and/or Hi-Speed's advertised and published specifications and to provide Hi-Speed with written notice of any discrepancy or rejection. Buyer shall have a period of thirty (30) days following completion of any services within which to inspect the services for conformity with the quotation, purchase order and/or Hi-Speed's advertised and published specifications and to provide Hi-Speed with written notice of any discrepancy or rejection. If the goods delivered or services performed do not so conform, upon delivery of notice to Hi-Speed of any discrepancy, nonconformance or rejection, Hi-Speed shall have sixty (60) days to cure the alleged discrepancy and/or nonconformance. If Hi-Speed fails to cure in this time period, Buyer shall have the right to reject such goods or services. After the cure period, goods that have been delivered and rejected, in whole or in part, shall be returned to Hi-Speed. Buyer shall notify Hi-Speed and arrange for the return of the goods as required. Should such non-conforming services be rejected Hi-Speed shall, at its sole cost, re-perform the non-conforming services. Inspection or failure to inspect on any occasion shall not affect Buyer's rights under the warranty provisions herein.
8. **WARRANTIES.** Hi-Speed warrants that all goods shall conform in all material aspects to the goods identified in the quotation to Buyer and/or purchase order, and Hi-Speed makes to Buyer the manufacturer's express warranty for any goods sold to Buyer, which is offered by the manufacturer at the time of acceptance of any quotation by Buyer. This warranty is conditioned upon the installation, operation, and maintenance of the goods in accordance with the manufacturer's recommendations and/or standard industry practice and the goods at all times being operated or used under normal operating conditions for which they were designed. Hi-Speed, at its sole option, will repair or

replace any defective or non-conforming goods in accordance with the applicable manufacturer's warranty. Warranty for any defective or incorrect parts is limited to the repair or replacement of those parts. Hi-Speed warrants that all services will conform in all material respects to the description of services identified in the quotation and will be performed in a good and workmanlike manner in accordance with industry practices and standards. Should the services be reasonably rejected or not conform with the foregoing warranties, Hi-Speed shall, at its sole cost, re-perform the defective or nonconforming services. Notwithstanding the foregoing, these warranties do not extend to goods or services to the extent that such goods have been subject to misuse, neglect or abuse not caused by Hi-Speed or have been used in violation of the approved written instructions furnished to Buyer. THE FOREGOING REPRESENTS THE SOLE AND EXCLUSIVE WARRANTY GIVEN BY HI-SPEED WITH RESPECT TO ALL GOODS SOLD AND IS IN LIEU OF ALL OTHER WARRANTIES EITHER EXPRESS OR IMPLIED. HI-SPEED EXPRESSLY DISCLAIMS ALL OTHER WARRANTIES INCLUDING MERCHANTABILITY AND FITNESS FOR A PARTICULAR USE OR PURPOSE. BUYER WAIVES ANY CLAIM THAT THESE EXCLUSIONS OR LIMITATIONS DEPRIVE IT OF AN ADEQUATE REMEDY AT EQUITY OR LAW OR CAUSE THIS AGREEMENT TO FAIL IN ITS ESSENTIAL PURPOSE. BUYER SHALL BE ENTITLED TO NO OTHER REMEDY OTHER THAN AS SET FORTH HEREIN, REGARDLESS OF THE CLAIM OR CAUSE OF ACTION, WHETHER BASED IN CONTRACT, TORT, NEGLIGENCE, GOODS LIABILITY, STRICT LIABILITY OR OTHERWISE.

9. **LIMITATION OF DAMAGES.** HI-SPEED SHALL HAVE NO LIABILITY TO BUYER WITH RESPECT TO THE SALE OR DELIVERY OF ANY GOODS OR THE REPAIR THEREOF OR WITH RESPECT TO THE SALE OR PERFORMANCE OF ANY SERVICES, FOR LOST PROFITS, SPECIAL, CONSEQUENTIAL, EXEMPLARY, PUNITIVE OR INCIDENTAL DAMAGES OF ANY KIND OR NATURE WHETHER ARISING IN CONTRACT, TORT, GOODS LIABILITY OR OTHERWISE, EVEN IF HI-SPEED WAS ADVISED OF THE POSSIBILITY OF SUCH LOSS OR DAMAGES. HI-SPEED SHALL NOT BE LIABLE FOR ANY DAMAGES OR DELAYS CAUSED BY ANY FAILURE TO MAKE ANY DELIVERY OF GOODS BY ANY EXPECTED TIME OR DATE OR THE FAILURE TO PROVIDE OR COMPLETE ANY SERVICES BY ANY EXPECTED DATE OR TIME. IN NO EVENT SHALL HI-SPEED BE LIABLE TO BUYER FOR ANY DAMAGES WHATSOEVER IN EXCESS OF THE TOTAL PRICE PAID FOR ALL GOODS AND/OR SERVICES HEREUNDER OR REFERENCED IN ANY QUOTATION OR THE PURCHASE ORDER.
10. **SEVERABILITY.** The partial or complete invalidity of any provision of these Standard Terms and Conditions shall not affect the enforceability of the remainder of these Standard Terms and Conditions. If any provision is found to be invalid or unenforceable, that portion shall be modified to make it enforceable or shall be stricken and the remainder of these Standard Terms and Conditions shall enforced.
11. **GOVERNING LAW AND JURISDICTION.** Any controversy arising out of any quotation, the purchase order, the goods sold or delivered, repair or replacement thereof, or any services provided pursuant to any quotation or any purchase order, or these Standard Terms and Conditions shall be governed by the laws of the state of Tennessee without regard to any choice of law provisions and any cause of action related in any manner thereto shall be brought only in the state or federal courts of Shelby County, Tennessee.
12. **ABANDONED EQUIPMENT.** Hi-Speed requires that Buyer promptly pick up or provide shipment instructions for Buyer equipment or other Buyer property in Hi-Speed's possession. If equipment or other Buyer property is left with Hi-Speed and not picked up within six (6) months after Hi-Speed's final action related to the applicable property (e.g. evaluation, teardown, estimate, completion of services), Hi-Speed will consider such property abandoned and may dispose of it in accordance with applicable law. Buyer agrees to hold Hi-Speed harmless for any damage or claim for such abandoned property and acknowledges that Hi-Speed may discard or recycle it at Hi-Speed's sole and absolute discretion. Specifically, Hi-Speed may sell Buyer's abandoned property at a private or public sale and retain the proceeds to offset Hi-Speed's storage, inspection and servicing costs. For the avoidance of doubt, Hi-Speed reserves its statutory and other lawful liens for unpaid charges related to abandoned property.
13. **FORCE MAJEURE.** Neither party shall be responsible for any delay or failure in performance of any party of the quotation, purchase order or these Standard Terms and Conditions to the extent that such delays or failures are caused by fire, flood, earthquake, explosion, war, embargo, government requirement, civil or military authority, acts of God, or any other circumstances beyond its reasonable control and not involving any fault or negligence on the party affected ("Condition"). If any such Condition occurs, the party delayed or unable to perform shall promptly give written notice to the other party and, if such Condition remains at the end of thirty (30) days, the party affected by the other party's delay and inability to perform may elect to (i) terminate such order or part thereof, or (ii) suspend the order for the duration of the Condition, if the Buyer is the suspending party, buy elsewhere comparable material to be sold under the order and apply to any commitment the purchase price of such purchase, and resume performance of the order once the Condition ceases, with an option in the affected party to extend the period of this order up to the length of the time the Condition endures.
14. **NONWAIVER.** No course of dealing or failure of either party to strictly enforce any term, right, or condition of these Standard Terms and Conditions will be construed as a waiver of such term, right or condition. Any waiver by Hi-Speed will only be in writing and will waive no succeeding breach of a term, right or condition.
15. **ASSIGNMENT.** The rights and obligations of the parties shall neither be assigned nor delegated without the prior written consent of the other party. However, any party may assign or delegate its respective rights and obligations, in whole or in part, (i) to any subsidiary, (ii) pursuant to other financing, merger or reorganization or (iii) pursuant to any sale or transfer of substantially all of the assets of the assigning party. These Standard Terms and Conditions shall bind the heirs, successors and assigns of the parties hereto.
16. **NO INDIVIDUAL LIABILITY.** Notwithstanding any other agreement to the contrary, the Buyer agrees that in no event will the Buyer hold and Hi-Speed owner, director, officer or employee personally liable for unintentional tortious conduct or conduct that constitutes the breach of any contract between Hi-Speed and the Buyer, even if the Hi-Speed owner, director, officer or employee is or could be construed to be a party to such contract.