



Hi-Speed Industrial Service  
7030 Ryburn Dr  
Millington, Tn 38053  
901-873-5300

## Field Service Ticket

FolderID: 103834  
FormID: 22490536

**Tolm Group Inc (12758)**  
210 N Moose St  
Morrliton, AR 72110

### Job Information

1.	Hi-Speed Job Number	103834
2.	Asset Type	Hoffman blower motor
3.	Make	
4.	Model	
5.	Serial Number	
6.	Customer Asset ID/Asset Name	Blower 3

### Service Call Details

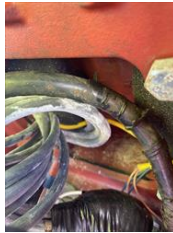
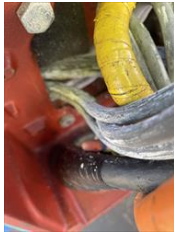
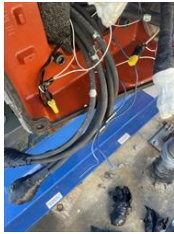


7. Service Objectives  
*To reconnect motor and check heaters.*

Hi-Speed Industrial Service disclaims all warranties, both express and implied, relating to the information, reports, opinions and analysis disclosed to the Customer by Hi-Speed. Hi-Speed shall not be liable for any errors or omissions, or any losses, injury or damages arising from the use of such information, reports, opinions and analysis by the Customer.

8. Services Performed

Reconnected motor 1,6,7,12-3,5,9,11-2,4,8,10. We checked the wiring to the motor heaters from the panel. Heater breakers were found in a panel next to the main contactor panels and all 3 motors heaters were turned off at the breakers. Once they were turned on they worked properly at 115 volts while the motor was not running. The heater wires were ran through the overload wires on the motors and the heaters but was not an issue because the overloads are not being used. I rewired all 3 motor heaters so that they are only going to the heaters and the overloads are out of the circuit. I siliconed all 3 terminal box covers. The amps on the first two motors are 1.2 amps each and the new heaters on the motor we rewound are 2.5. Heaters on all 3 motors are hooked for 115 volt. The motor is running at 140 amps.



9. Service Technician Recommendations

Approval Signatures

10. Service Technician Signature

Trevor Hall

A handwritten signature in black ink, appearing to read "Trevor Hall".

A handwritten signature in black ink that reads "Joel Thetford". The signature is written in a cursive, slightly stylized font. The "J" is large and loops around the "o". The "T" is tall and has a long horizontal stroke that extends to the right, ending in a small loop. The "e" is small and loops back to the "T". The "t" is tall and has a long horizontal stroke that extends to the right, ending in a small loop. The "f" is tall and has a long horizontal stroke that extends to the right, ending in a small loop. The "o" is small and loops back to the "t". The "r" is tall and has a long horizontal stroke that extends to the right, ending in a small loop. The "d" is tall and has a long horizontal stroke that extends to the right, ending in a small loop.