

LR Field Services

Prepared for Entergy Lake Catherine Plt (1066801)

141 W. County Line Rd
Malvern AR 72104

Table of Contents

Field Service Ticket	1.0
Field Service Ticket	2.0



Hi-Speed Industrial Service
7030 Ryburn Dr
Millington, Tn 38053
901-873-5300

Field Service Ticket

FolderID: 103034
FormID: 20518478

Entergy Lake Catherine Plt (1066801)
141 W. County Line Rd
Malvern, AR 72104

Job Information

- | | |
|------------------------|---------------------|
| 1. Hi-Speed Job Number | 103034 |
| 2. Asset Type | Verticle pump motor |
| 3. Make | Westinghouse |

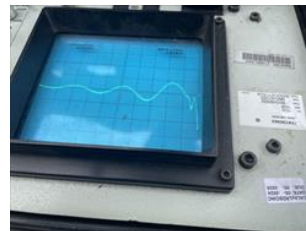
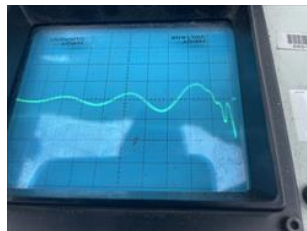
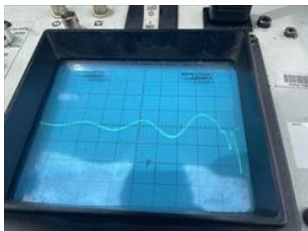


- | | |
|---------------------------------|--|
| 4. Model | |
| 5. Serial Number | |
| 6. Customer Asset ID/Asset Name | |

Service Call Details

7. Service Objectives
Test motor electrically

8. Services Performed
Tested motor with the Baker tester. Motor checked good on all 3 phases at 7800 volts. Motor has around 230 megaohms at 1000 volts. It is very humid outside and motor has been sitting for around 7-8 months with heaters on.



9. Service Technician Recommendations

Approval Signatures

- | | |
|----------------------------------|-------------|
| 10. Service Technician Signature | Trevor Hall |
|----------------------------------|-------------|

- | | |
|------------------------|-----------------|
| 11. Customer Signature | Dustin Williams |
|------------------------|-----------------|

Hi-Speed Industrial Service disclaims all warranties, both express and implied, relating to the information, reports, opinions and analysis disclosed to the Customer by Hi-Speed. Hi-Speed shall not be liable for any errors or omissions, or any losses, injury or damages arising from the use of such information, reports, opinions and analysis by the Customer.





Hi-Speed Industrial Service
7030 Ryburn Dr
Millington, Tn 38053
901-873-5300

Field Service Ticket

FolderID: 103034
FormID: 20546792

Entergy Lake Catherine Plt (1066801)
141 W. County Line Rd
Malvern, AR 72104

Job Information

- | | |
|------------------------|---------------|
| 1. Hi-Speed Job Number | 103034 |
| 2. Asset Type | 1750 HP motor |
| 3. Make | Westinghouse |
| 4. Model | |



- | | |
|---------------------------------|---------------------------|
| 5. Serial Number | |
| 6. Customer Asset ID/Asset Name | 4B circulating water pump |

Service Call Details

- | | |
|-----------------------|----------------------------|
| 7. Service Objectives | Wire up motor and test run |
| 8. Services Performed | Same as objective. |



- | | |
|---------------------------------------|--|
| 9. Service Technician Recommendations | |
|---------------------------------------|--|

Approval Signatures

- | | |
|----------------------------------|-------------|
| 10. Service Technician Signature | Trevor Hall |
|----------------------------------|-------------|

- | | |
|------------------------|-----------------|
| 11. Customer Signature | Dustin Williams |
|------------------------|-----------------|

Hi-Speed Industrial Service disclaims all warranties, both express and implied, relating to the information, reports, opinions and analysis disclosed to the Customer by Hi-Speed. Hi-Speed shall not be liable for any errors or omissions, or any losses, injury or damages arising from the use of such information, reports, opinions and analysis by the Customer.

