

# LR Field Services

Prepared for Custom Craft Poultry

3064 E Main St  
Batesville AR 72501

# Table of Contents



Hi-Speed Industrial Service  
7030 Ryburn Dr  
Millington, Tn 38053  
901-873-5300

## Field Service Ticket

FolderID: 103655  
FormID: 22008061

**Custom Craft Poultry**  
3064 E Main St  
Batesville, AR 72501

### Job Information

- |                        |        |
|------------------------|--------|
| 1. Hi-Speed Job Number |        |
| 2. Asset Type          | 250 HP |
| 3. Make                | Teco   |
| 4. Model               |        |



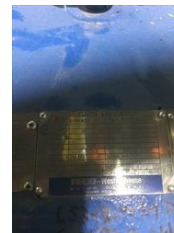
5. Serial Number



- |                                 |                                    |
|---------------------------------|------------------------------------|
| 6. Customer Asset ID/Asset Name | Custom Craft Poultry<br>Batesville |
|---------------------------------|------------------------------------|

### Service Call Details

7. Service Objectives  
*Align 250hp motor*



Hi-Speed Industrial Service disclaims all warranties, both express and implied, relating to the information, reports, opinions and analysis disclosed to the Customer by Hi-Speed. Hi-Speed shall not be liable for any errors or omissions, or any losses, injury or damages arising from the use of such information, reports, opinions and analysis by the Customer.



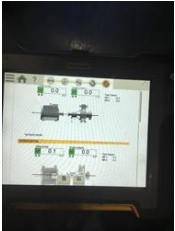
Before weld



After weld



new holes before weld



new holes before weld



new holes after weld

## 8. Services Performed

Aligned 250 hp motor to compressor



Before weld



After weld



After weld



New hole after weld

## 9. Service Technician Recommendations

### Approval Signatures

10. Service Technician Signature

Chris Wiley

*Chris Wiley*

11. Customer Signature

Cody Goodwin

*Cody Goodwin*