

Motor Storage Inspection

Prepared for Arkansas Electric Coop. (11681)

17400 highway 365 south
Little Rock AR 72206

Table of Contents

AC Inspection as Found - *MOTOR SHOP LR*

AC Inspection - Rev. 2: *F0206185435*

1.0

Hi-Speed Industrial Service disclaims all warranties, both express and implied, relating to the information, reports, opinions and analysis disclosed to the Customer by Hi-Speed. Hi-Speed shall not be liable for any errors or omissions, or any losses, injury or damages arising from the use of such information, reports, opinions and analysis by the Customer.

Printed on 3/13/2024

Powered by **INSPECTALL**

Table of Contents



Hi-Speed Industrial Service
7030 Ryburn Dr
Millington, Tn 38053
901-873-5300

AC Inspection as Found
Arkansas Electric Coop. (11681)
17400 highway 365 south
Little Rock, AR 72206

FolderID: 102594
FormID: 19644681

AC Inspection - Rev. 2

Location: MOTOR SHOP LR

Serial Number: F0206185435

Description: AMETEK BLOWER 7 1/2HP

Hi-Speed Job Number: 102594

Manufacturer: Other

Product Number: CAT: 511570

Serial Number: F0206185435

HP/kW: 7.5 (HP)

RPM: 3450 (RPM)

Frame: 215TCZ

Voltage: 208-230/460

Phase: Three

Hz: 60 (Hz)

Service Factor: 1.15

Enclosure: TEFC

of Leads: 9

J-box Included: Complete

Coupling/Sheave: None

Date Received: 03/13/2024

Bearing RTDs: No

Stator RTDs: No

Repair Stage: Final

Rewind: No

Shaft Machined Fit Repairs Required: Yes

Bearing Housing Machined Fit Repairs Required: Yes

Heaters: No

Winding Type : Random Wound

Bearing Type: Rolling Element

Priorities Found: **5 - High** **6 - Good**

Overall Condition

1. Report Date **03/13/2024**

Hi-Speed Industrial Service disclaims all warranties, both express and implied, relating to the information, reports, opinions and analysis disclosed to the Customer by Hi-Speed. Hi-Speed shall not be liable for any errors or omissions, or any losses, injury or damages arising from the use of such information, reports, opinions and analysis by the Customer.

Printed on 3/13/2024

Powered by **INSPECTALL**

1.0

2. Nameplate Picture



3. Photos of all six sides of the machine.



4. Describe the Overall Condition of the Equipment as Received









Hi-Speed Industrial Service disclaims all warranties, both express and implied, relating to the information, reports, opinions and analysis disclosed to the Customer by Hi-Speed. Hi-Speed shall not be liable for any errors or omissions, or any losses, injury or damages arising from the use of such information, reports, opinions and analysis by the Customer.

Printed on 3/13/2024

Powered by [INSPECTALL](#)



1/2/2024 8:37:...	480V w/o...	T...	PASS	PASS
13/2024 8:24:...	480V w/o...	T...	PASS	PASS
13/2024 8:09:...	480V w/o...	T...	FAIL	FAIL
Date	3/13/2024	3/13/2024	3/13/2024	
Time	8:37:44 AM	8:24:05 AM	8:09:34 AM	
Test Status	PASS	PASS	DELTA R	
L1 (Ohms)				
L2 (Ohms)				
L3 (Ohms)				
L1-L2 (Ohms)	1.470 Corr: 1.4...	1.551 Corr: 1.5...	1.357 Corr: 1.5...	
L2-L3 (Ohms)	1.551 Corr: 1.5...	1.554 Corr: 1.5...	1.357 Corr: 1.5...	
L3-L1 (Ohms)	1.554 Corr: 1.5...	1.470 Corr: 1.4...	1.473 Corr: 1.4...	
Max Delta R %	5.517	5.517	5.503	
Coil 1 (Ohms)	2.131 Corr: 2.1...	2.364 Corr: 2.4...	2.375 Corr: 2.4...	
Coil 2 (Ohms)	2.364 Corr: 2.4...	2.373 Corr: 2.4...	2.375 Corr: 2.4...	
Coil 3 (Ohms)	2.373 Corr: 2.4...	2.131 Corr: 2.1...	2.134 Corr: 2.1...	
Megohm Stat...	PASS	PASS	USER AB...	
Volts (V)	494	511	504	
Il(μA)	0.5527	0.7473	0.0084	
Resist	894	684	59935	
At 40°C	241	184	16183	
HI Status	No Test	No Test	No Test	
Volts (V)	No Test	No Test	No Test	
Nameplate	Application	Results Summary	Surge	P




Coil 1 (Ohms)	2.131 Corr: 2.1...	2.364 Corr: 2.4...	2.375 Co
Coil 2 (Ohms)	2.364 Corr: 2.4...	2.373 Corr: 2.4...	2.375 Co
Coil 3 (Ohms)	2.373 Corr: 2.4...	2.131 Corr: 2.1...	2.134 Co
Megohm Stat...	PASS	PASS	USER AB...
Volts (V)	494	511	504
Il(μA)	0.5527	0.7473	0.0084
Resist	894	684	59935
At 40°C	241	184	16183
HI Status	No Test	No Test	No Test
Volts (V)	No Test	No Test	No Test
Nameplate	Application	Results Summary	Surge



Initial Mechanical/Electrical

5.	Does Shaft Turn Freely?	(Y) Yes
6.	Does the shaft require T.I.R in Lathe to identify additional repairs?	(No) No
7.	Does Shaft Have Visible Damage?	(No) No
8.	Assembled Shaft Runout	Inches
	Na	
9.	Assembled Shaft End Play	inches
	Na	

Hi-Speed Industrial Service disclaims all warranties, both express and implied, relating to the information, reports, opinions and analysis disclosed to the Customer by Hi-Speed. Hi-Speed shall not be liable for any errors or omissions, or any losses, injury or damages arising from the use of such information, reports, opinions and analysis by the Customer.

10. Air Gap Variation <10%	Na	
11. Lead Condition	(P) Pass	
12. Lead Length	8 Inches	
13. Does it have Lugs?, If so what is the Stud Size?	(No) No	
14. Lead Numbers	1-9	
15. Frame Condition	pass	
16. Fan Condition	(F) Fail	<p>Fan blades were soldered together</p> 

Hi-Speed Industrial Service disclaims all warranties, both express and implied, relating to the information, reports, opinions and analysis disclosed to the Customer by Hi-Speed. Hi-Speed shall not be liable for any errors or omissions, or any losses, injury or damages arising from the use of such information, reports, opinions and analysis by the Customer.

17. Broken or Missing Components

fan and a base couple bolt is broke

Initial Electrical Inspection

18. Insulation Resistance/Megger

Megohms

Coil 1 (Ohms)	2.131 Corr: 2.1...	2.364 Corr: 2.4...	2.375 Co
Coil 2 (Ohms)	2.364 Corr: 2.4...	2.373 Corr: 2.4...	2.375 Co
Coil 3 (Ohms)	2.373 Corr: 2.4...	2.131 Corr: 2.1...	2.134 Co
Megohm Stat...	PASS	PASS	USER AB
Volts (V)	494	511	504
µA	0.5527	0.7473	0.0084
Resist	894	684	59935
At 40°C	241	184	16183
PI Status	No Test	No Test	No Test
Notes (V)			
Nameplate	Application	Results Summary	Surge P

19. Winding Resistance

1-2

1-3

2-3

3/13/2024 8:37:...	480V w/o...	T...	PASS	PASS
3/13/2024 8:24:...	480V w/o...	T...	PASS	PASS
3/13/2024 8:09:...	480V w/o...	T...	FAIL	FAIL
Date	3/13/2024	3/13/2024	3/13/2024	
Time	8:37:44 AM	8:24:05 AM	8:09:34 AM	
Test Status	PASS	PASS	DELTA R	
L1 (Ohms)				
L2 (Ohms)				
L3 (Ohms)				
1-L2 (Ohms)	1.470 Corr: 1.4...	1.551 Corr: 1.5...	1.557 Corr: 1.5...	
2-L3 (Ohms)	1.551 Corr: 1.5...	1.554 Corr: 1.5...	1.557 Corr: 1.5...	
3-L1 (Ohms)	1.554 Corr: 1.5...	1.470 Corr: 1.4...	1.473 Corr: 1.4...	
Max Delta R %	5.517	5.517	5.503	
Coil 1 (Ohms)	2.131 Corr: 2.1...	2.364 Corr: 2.4...	2.373 Corr: 2.4...	
Coil 2 (Ohms)	2.364 Corr: 2.4...	2.373 Corr: 2.4...	2.375 Corr: 2.4...	
Coil 3 (Ohms)	2.373 Corr: 2.4...	2.131 Corr: 2.1...	2.134 Corr: 2.1...	
Megohm Stat...	PASS	PASS	DELTA R	
Notes (V)				
Nameplate	Application	Results Summary	Surge P	

20. Perform Surge Test

Failed surge but passed on test panel

Tools	Help
102594	4
Tests	Trending
Test ID: 480V w/UTR101HP Step	Edit Test ID Enable Calibration
For: 480V w/UTR101HP Step	Motor
Temperature/Resistance Tests	Surge Test
Temperature	Manual
Resistance	3 Lead Low V
DC Test	500 Vdc
500 Vdc	500 Vdc
500 Vdc	500 Vdc
500 Vdc	500 Vdc
Surge Test	1000 Vdc
1000 Vdc	1000 Vdc

21. Number of Stator Slots

36

Hi-Speed Industrial Service disclaims all warranties, both express and implied, relating to the information, reports, opinions and analysis disclosed to the Customer by Hi-Speed. Hi-Speed shall not be liable for any errors or omissions, or any losses, injury or damages arising from the use of such information, reports, opinions and analysis by the Customer.

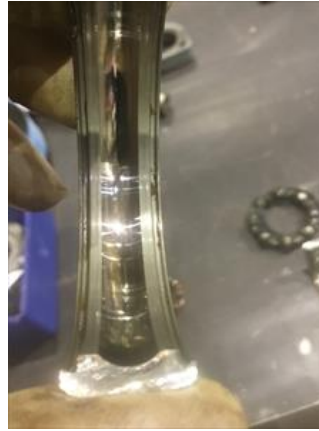
22. Stator Condition	pass
23. Stator Thermistors/Ohms	Na
24. Stator Overloads/Ohms	Na
Mechanical Inspection	
25. Drive End Bearing Brand	koyo
26. Drive End Bearing Number-	6309-2RS
27. Drive End Bearing Qty.	1
28. Drive End Bearing Type	(Ball) Ball Bearing
Sealed	
29. Drive End Lubrication Type	(Grease) Grease Lubricated
30. Drive End Bearing Insulation or Grounding Device?	na
31. Drive End Wavy Washer/Snap-Ring Other Retention Device?	sleeve after bearing
32. Drive End Bearing Condition	
Signs of fluting	



33. Opposite Drive End Bearing Brand	nachi
34. Opposite Drive End Bearing Number-	6206-2RS
35. Opposite Drive End Bearing Qty.	1
36. Opposite Drive End Bearing Type	(Ball) Ball Bearing
Sealed	
37. Opposite Drive End Lubrication Type	(Grease) Grease Lubricated
38. Opposite Drive End Bearing Insulation or Grounding Device?	na
39. Opposite Drive End Wavy Washer/Snap-Ring Other Retention Device?	na

40. Opposite Drive End Bearing Condition

Signs of fluting



41. Drive End Seal

na

42. Opposite Drive End Seal

Na

Rotor Inspection

43. Rotor Type/Material

(Squirrel Aluminum) Squirrel
Cage Aluminum Die Cast

44. Growler Test

(Pass) Pass

45. Number of Rotor Bars

28

46. Rotor Condition

pass

47. List the Parts needed for the Repair Below

6309-2RS

6206-2RS

New sound dampening filters

New fan

New bolt or base couple

48. Signature of Technician that Disassembled Motor

Cw

Mechanical Fits- Rotor

49. Shaft Runout

0.002 inches

50. Rotor Runout

Drive End Bearing Fit

Rotor Body

Opposite Drive End Bearing

Na

51. Coupling Fit Closest to Bearing Housing

0 Degrees

90 Degrees

120 Degrees

Na


52. Coupling Fit Closest to the end of the Shaft

0 Degrees

60 Degrees

120 Degrees

Na

53.	Drive End Bearing Shaft Fit		
	0 Degrees	60 Degrees	120 Degrees
	1.7715	1.7714	1.7714
54.	Drive End Bearing Shaft Fit Condition		(F) Fail
55.	Opposite Drive End Bearing Shaft Fit		
	0 Degrees	60 Degrees	120 Degrees
	1.1811	1.1809	1.1811
56.	Opposite Drive End Bearing Shaft Fit Condition		(F) Fail
57.	Shaft Air Seal Fits		
	Drive End Air Seal	Opposite Drive End Air Seal	
	Na		
Mechanical Fits- Bearing Housings			
58.	Drive End - Endbell Bearing Fit		
	0 Degrees	60 Degrees	120 Degrees
	3.9375	3.9381	3.9377
59.	Drive End - Endbell Bearing Fit Condition		(P) Pass
60.	Opposite Drive End - Endbell Bearing Fit		
	0 Degrees	60 Degrees	120 Degrees
	2.442	2.4419	2.4417
61.	Opposite Drive End - Endbell Bearing Fit Condition		(F) Fail
62.	Bearing Cap Condition		
	Drive End Bearing Cap	Opposite Drive End Bearing Cap	
	Pass		
63.	End Bell Air Seal Fits		
	Drive End Air Seal	Opposite Drive End Air Seal	
	Na		
64.	List Machine Work Needed Below		
	<i>Bothe shaft bearing fits and ODE end bell bearing fit</i>		
65.	Technician		Cw
			
	Witness- Trevor		
Root Cause of Failure			
66.	Failure locations		
	<i>Lead connection, bearings, shaft bearing fits, and ODE end bell bearing fit</i>		
67.	Root cause of failure		
	<i>Loose connection on 4&7 leads, bearings have fluting, and bearings fits are worn</i>		
Dynamic Balance Report			
68.	Rotor Weight and Balance Grade		
	Rotor Weight	Balance Grade	

69. Initial Balance Readings		
Drive End	Opposite Drive End	
70. Final Balance Readings		
Drive End	Opposite Drive End	
71. Technician		
Mechanical Fits- Rotor - Post Repair		
72. Shaft Runout Post Repair		
73. Rotor Runout Post Repair		
Drive End Bearing Fit	Rotor Body	Opposite Drive End Bearing
74. Coupling Fit Closest to Bearing Housing Post Repair		
0 Degrees	90 Degrees	120 Degrees
75. Coupling Fit Closest to the end of the Shaft Post Repair		
0 Degrees	60 Degrees	120 Degrees
76. Drive End Bearing Shaft Fit Post Repair		
0 Degrees	60 Degrees	120 Degrees
77. Opposite Drive End Bearing Shaft Fit Post Repair		
0 Degrees	60 Degrees	120 Degrees
78. Shaft Air Seal Fits Post Repair		
Drive End Air Seal	Opposite Drive End Air Seal	
79. Shaft Repair Sign-off		
Mechanical Fits- Bearing Housings - Post Repair		
80. Drive End - Endbell Bearing Fit Post Repair		
0 Degrees	60 Degrees	120 Degrees
81. Opposite Drive End - Endbell Bearing Fit Post Repair		
0 Degrees	60 Degrees	120 Degrees
82. Bearing Cap Condition Post Repair		
Drive End Bearing Cap	Opposite Drive End Bearing Cap	
83. End Bell Air Seal Fits Post Repair		
Drive End Air Seal	Opposite Drive End Air Seal	
84. End Bell Repair Sign-off		
Assembly		
85. QC Check All Parts for Cleanliness Prior to Assembly		
86. Photograph All Major Components prior to assembly		
87. Final Insulation Resistance Test		
88. Assembled Shaft Endplay		
89. Assembled Shaft Runout		

Hi-Speed Industrial Service disclaims all warranties, both express and implied, relating to the information, reports, opinions and analysis disclosed to the Customer by Hi-Speed. Hi-Speed shall not be liable for any errors or omissions, or any losses, injury or damages arising from the use of such information, reports, opinions and analysis by the Customer.

90. Test Run Voltage			
Volts	Volts	Volts	
91. Test Run Amperage			
Amps	Amps	Amps	
92. Drive End Vibration Readings - Inches Per Second			
Horizontal	Vertical	Axial	
93. Opposite Drive End Vibration Readings - Inches Per Second			
Horizontal	Vertical	Axial	
94. Ambient Temperature - Fahrenheit			
95. Drive End Bearing Temps - Fahrenheit			
5 Minutes	10 Minutes	15 Minutes	
96. Opposite Drive End Bearing Temps - Fahrenheit			
5 Minutes	10 Minutes	15 Minutes	
97. Document Final Condition with Pictures after paint			
98. Final Pics and QC Review			



STANDARD TERMS AND CONDITIONS FOR PURCHASE OF GOOD AND/OR SERVICES

1. **APPLICABILITY.** The sale of any and all goods and/or services by Mock, Inc. d/b/a Hi-Speed Industrial Service ("Hi-Speed") shall be specifically conditioned upon and subject to the following terms and conditions which are incorporated by reference into any contracts and purchase orders with Hi-Speed, and which shall form and become a part of any agreement related thereto. Buyer's acceptance of any offer or quotation made by Hi-Speed for sale of any goods or services is expressly made subject to the terms and conditions set forth herein and to be so effective, Buyer need not sign or approve these Terms and Conditions to be bound hereunder provided a copy of same is provided to Buyer through any means. None of the terms and conditions contained herein may be added to, expanded, changed, modified, superseded or otherwise altered except as revised in writing and duly executed by Hi-Speed, and all orders received by Hi-Speed shall be governed only by the terms and conditions contained herein, notwithstanding any terms, conditions or provisions of any purchase order, release order, authorization or any other form issued by the Buyer. Hi-Speed hereby objects to any additional, modified, changed, deleted, altered or other terms and conditions not contained herein and notifies Buyer that any such terms or provisions are expressly rejected by Hi-Speed.
2. **PRICE.** All quoted prices shall remain firm and binding for a period of thirty (30) days from the date of quotation or for the period specifically stated in the quotation. The price for any and all goods and/or services ordered or approved by Buyer after thirty (30) days from the date of any quotation are subject to any increase in price that may occur after the expiration of thirty (30) days from the issuance of the quotation and the date the Buyer releases any shipment.
3. **SCOPE OF GOODS AND/OR SERVICES.** The goods and/or services provided by Hi-Speed pursuant to any quotation shall be limited exclusively to those goods and/or services expressly identified therein. Hi-Speed does not assume any responsibility and/or liability for the failure to provide any other goods and/or services not identified in any quotation. Modifications, additions or deletions to or from the scope referenced in any quotation shall only be effective if evidenced in writing and signed by Hi-Speed. The sale of any of all goods and/or services affected by such modification, addition or deletion shall be subject to these same Standard Terms and Conditions whether or not referenced therein.
4. **BILLING AND PAYMENT TERMS.** Hi-Speed shall invoice Buyer for all goods and/or services as same are rendered at the address listed on the quotation. Payments for all goods and/or services shall be due thirty (30) days from the date of the current invoice or as otherwise set forth in the quotation. Late payments are subject to a late fee of 5% of the total invoice amount. Recurring late payments may lead to a deposit requirement on future services or sale of goods. Buyer shall be liable to Hi-Speed for any and all fees and expenses incurred by Hi-Speed to collect any invoices or to enforce these Standard Terms and Conditions, including but not limited to, attorney's fees.
5. **DELIVERY OF GOODS AND/OR SERVICES.** Unless otherwise identified in the quotation, all shipments are F.O.B. Hi-Speed's warehouse and the title to and all risk of loss with respect to any goods shipped shall pass to Buyer when such goods are delivered to the carrier at Hi-Speed's warehouse. Hi-Speed will use its best efforts to affect delivery by the date or dates specified in the quotation. However, Hi-Speed shall not be liable for delay in or failure to make shipment, or to perform services, by any identified date for any reason whatsoever, including but not limited to, causes beyond its reasonable control, such as strikes, fires, floods, epidemics, quarantines, restrictions, severe weather, embargos, acts of God, or public enemy, war, riot, delays in transportation or the inability to obtain necessary labor, materials or manufacturing facilities.
6. **DELIVERY SITE AND TIME FOR PERFORMANCE.** Hi-Speed and Buyer agree that time is of the essence for the purchase order and that Buyer shall fully cooperate with Hi-Speed in order to allow Hi-Speed full access to prosecute its work diligently and in an orderly manner. Buyer shall assist Hi-Speed in every way possible to avoid delaying, disrupting or interfering with the progress of Hi-Speed's work at the project site. In the event Hi-Speed's work is delayed, hindered, suspended, disrupted, re-sequenced or interfered with or rendered less efficient or more costly or adversely affected in any way as a result of acts or omissions of Buyer or other contractors or employees of Buyer or by any other reason beyond Hi-Speed's control and without the fault of Hi-Speed, then, in such event, Buyer shall be liable to Hi-Speed for any damages, additional costs, expenses, labor, materials, man hours, acceleration costs, overtime, additional jobsite overhead, extended home office overhead, and any and all other direct and indirect expenses of whatsoever nature or kind, caused in whole or in part, as a result of any of the above-referenced occurrences. Hi-Speed's project records will be the basis for computing the additional costs and damages of Hi-Speed's labor, materials, expenses and overhead related to such changes. BUYER WARRANTS THAT THE SITE FOR DELIVERY OR INSTALLATION OF ANY GOODS AND/OR FOR THE PERFORMANCE OF ANY SERVICES SHALL BE READY AND ADEQUATE FOR HI-SPEED'S DELIVERY OF GOODS AND/OR PERFORMANCE OF SERVICES AND THAT HI-SPEED SHALL HAVE FULL ACCESS THERETO, FREE OF ALL OBSTRUCTIONS. BUYER SHALL ASSUME ALL EXTRA COSTS ASSOCIATED WITH HI-SPEED'S INABILITY TO INSTALL ANY GOODS OR PERFORM ANY SERVICES AS A RESULT OF BUYER'S FAILURE TO COMPLY WITH THIS PROVISION. HI-SPEED MAY NOT INSPECT THE SITE PRIOR TO DELIVERY AND/OR INSTALLATION OF GOODS AND/OR PERFORMANCE OF SERVICES AND MAKES NO WARRANTY AS TO THE SUFFICIENCY OF THE SITE FOR THE DELIVERY AND/OR INSTALLATION OF GOODS AND/OR THE PERFORMANCE OF SERVICES AT SUCH SITE.
7. **INSPECTION/ACCEPTANCE.** All goods and services ordered pursuant to any quotation shall be subject to inspection by Buyer after delivery or performance to determine conformity with the quotation and/or purchase order and Hi-Speed's advertised or published specifications. Buyer shall have a period of thirty (30) days from shipment of goods at the delivery destination specified in the quotation within which to inspect the goods for conformity with the quotation, order and/or Hi-Speed's advertised and published specifications and to provide Hi-Speed with written notice of any discrepancy or rejection. Buyer shall have a period of thirty (30) days following completion of any services within which to inspect the services for conformity with the quotation, purchase order and/or Hi-Speed's advertised and published specifications and to provide Hi-Speed with written notice of any discrepancy or rejection. If the goods delivered or services performed do not so conform, upon delivery of notice to Hi-Speed of any discrepancy, nonconformance or rejection, Hi-Speed shall have sixty (60) days to cure the alleged discrepancy and/or nonconformance. If Hi-Speed fails to cure in this time period, Buyer shall have the right to reject such goods or services. After the cure period, goods that have been delivered and rejected, in whole or in part, shall be returned to Hi-Speed. Buyer shall notify Hi-Speed and arrange for the return of the goods as required. Should such non-conforming services be rejected Hi-Speed shall, at its sole cost, re-perform the non-conforming services. Inspection or failure to inspect on any occasion shall not affect Buyer's rights under the warranty provisions herein.
8. **WARRANTIES.** Hi-Speed warrants that all goods shall conform in all material aspects to the goods identified in the quotation to Buyer and/or purchase order, and Hi-Speed makes to Buyer the manufacturer's express warranty for any goods sold to Buyer, which is offered by the manufacturer at the time of acceptance of any quotation by Buyer. This warranty is conditioned upon the installation, operation, and maintenance of the goods in accordance with the manufacturer's recommendations and/or standard industry practice and the goods at all times being operated or used under normal operating conditions for which they were designed. Hi-Speed, at its sole option, will repair or

replace any defective or non-conforming goods in accordance with the applicable manufacturer's warranty. Warranty for any defective or incorrect parts is limited to the repair or replacement of those parts. Hi-Speed warrants that all services will conform in all material respects to the description of services identified in the quotation and will be performed in a good and workmanlike manner in accordance with industry practices and standards. Should the services be reasonably rejected or not conform with the foregoing warranties, Hi-Speed shall, at its sole cost, re-perform the defective or nonconforming services. Notwithstanding the foregoing, these warranties do not extend to goods or services to the extent that such goods have been subject to misuse, neglect or abuse not caused by Hi-Speed or have been used in violation of the approved written instructions furnished to Buyer. THE FOREGOING REPRESENTS THE SOLE AND EXCLUSIVE WARRANTY GIVEN BY HI-SPEED WITH RESPECT TO ALL GOODS SOLD AND IS IN LIEU OF ALL OTHER WARRANTIES EITHER EXPRESS OR IMPLIED. HI-SPEED EXPRESSLY DISCLAIMS ALL OTHER WARRANTIES INCLUDING MERCHANTABILITY AND FITNESS FOR A PARTICULAR USE OR PURPOSE. BUYER WAIVES ANY CLAIM THAT THESE EXCLUSIONS OR LIMITATIONS DEPRIVE IT OF AN ADEQUATE REMEDY AT EQUITY OR LAW OR CAUSE THIS AGREEMENT TO FAIL IN ITS ESSENTIAL PURPOSE. BUYER SHALL BE ENTITLED TO NO OTHER REMEDY OTHER THAN AS SET FORTH HEREIN, REGARDLESS OF THE CLAIM OR CAUSE OF ACTION, WHETHER BASED IN CONTRACT, TORT, NEGLIGENCE, GOODS LIABILITY, STRICT LIABILITY OR OTHERWISE.

9. **LIMITATION OF DAMAGES.** HI-SPEED SHALL HAVE NO LIABILITY TO BUYER WITH RESPECT TO THE SALE OR DELIVERY OF ANY GOODS OR THE REPAIR THEREOF OR WITH RESPECT TO THE SALE OR PERFORMANCE OF ANY SERVICES, FOR LOST PROFITS, SPECIAL, CONSEQUENTIAL, EXEMPLARY, PUNITIVE OR INCIDENTAL DAMAGES OF ANY KIND OR NATURE WHETHER ARISING IN CONTRACT, TORT, GOODS LIABILITY OR OTHERWISE, EVEN IF HI-SPEED WAS ADVISED OF THE POSSIBILITY OF SUCH LOSS OR DAMAGES. HI-SPEED SHALL NOT BE LIABLE FOR ANY DAMAGES OR DELAYS CAUSED BY ANY FAILURE TO MAKE ANY DELIVERY OF GOODS BY ANY EXPECTED TIME OR DATE OR THE FAILURE TO PROVIDE OR COMPLETE ANY SERVICES BY ANY EXPECTED DATE OR TIME. IN NO EVENT SHALL HI-SPEED BE LIABLE TO BUYER FOR ANY DAMAGES WHATSOEVER IN EXCESS OF THE TOTAL PRICE PAID FOR ALL GOODS AND/OR SERVICES HEREUNDER OR REFERENCED IN ANY QUOTATION OR THE PURCHASE ORDER.
10. **SEVERABILITY.** The partial or complete invalidity of any provision of these Standard Terms and Conditions shall not affect the enforceability of the remainder of these Standard Terms and Conditions. If any provision is found to be invalid or unenforceable, that portion shall be modified to make it enforceable or shall be stricken and the remainder of these Standard Terms and Conditions shall enforced.
11. **GOVERNING LAW AND JURISDICTION.** Any controversy arising out of any quotation, the purchase order, the goods sold or delivered, repair or replacement thereof, or any services provided pursuant to any quotation or any purchase order, or these Standard Terms and Conditions shall be governed by the laws of the state of Tennessee without regard to any choice of law provisions and any cause of action related in any manner thereto shall be brought only in the state or federal courts of Shelby County, Tennessee.
12. **ABANDONED EQUIPMENT.** Hi-Speed requires that Buyer promptly pick up or provide shipment instructions for Buyer equipment or other Buyer property in Hi-Speed's possession. If equipment or other Buyer property is left with Hi-Speed and not picked up within six (6) months after Hi-Speed's final action related to the applicable property (e.g. evaluation, teardown, estimate, completion of services), Hi-Speed will consider such property abandoned and may dispose of it in accordance with applicable law. Buyer agrees to hold Hi-Speed harmless for any damage or claim for such abandoned property and acknowledges that Hi-Speed may discard or recycle it at Hi-Speed's sole and absolute discretion. Specifically, Hi-Speed may sell Buyer's abandoned property at a private or public sale and retain the proceeds to offset Hi-Speed's storage, inspection and servicing costs. For the avoidance of doubt, Hi-Speed reserves its statutory and other lawful liens for unpaid charges related to abandoned property.
13. **FORCE MAJEURE.** Neither party shall be responsible for any delay or failure in performance of any party of the quotation, purchase order or these Standard Terms and Conditions to the extent that such delays or failures are caused by fire, flood, earthquake, explosion, war, embargo, government requirement, civil or military authority, acts of God, or any other circumstances beyond its reasonable control and not involving any fault or negligence on the party affected ("Condition"). If any such Condition occurs, the party delayed or unable to perform shall promptly give written notice to the other party and, if such Condition remains at the end of thirty (30) days, the party affected by the other party's delay and inability to perform may elect to (i) terminate such order or part thereof, or (ii) suspend the order for the duration of the Condition, if the Buyer is the suspending party, buy elsewhere comparable material to be sold under the order and apply to any commitment the purchase price of such purchase, and resume performance of the order once the Condition ceases, with an option in the affected party to extend the period of this order up to the length of the time the Condition endures.
14. **NONWAIVER.** No course of dealing or failure of either party to strictly enforce any term, right, or condition of these Standard Terms and Conditions will be construed as a waiver of such term, right or condition. Any waiver by Hi-Speed will only be in writing and will waive no succeeding breach of a term, right or condition.
15. **ASSIGNMENT.** The rights and obligations of the parties shall neither be assigned nor delegated without the prior written consent of the other party. However, any party may assign or delegate its respective rights and obligations, in whole or in part, (i) to any subsidiary, (ii) pursuant to other financing, merger or reorganization or (iii) pursuant to any sale or transfer of substantially all of the assets of the assigning party. These Standard Terms and Conditions shall bind the heirs, successors and assigns of the parties hereto.
16. **NO INDIVIDUAL LIABILITY.** Notwithstanding any other agreement to the contrary, the Buyer agrees that in no event will the Buyer hold and Hi-Speed owner, director, officer or employee personally liable for unintentional tortious conduct or conduct that constitutes the breach of any contract between Hi-Speed and the Buyer, even if the Hi-Speed owner, director, officer or employee is or could be construed to be a party to such contract.