



**KEEPING YOUR FACILITY UP TO SPEED**  
— EVERY DAY SINCE 1946 —

LR Motor Shop Repairs

**Job Number 102665**

Prepared for Arkansas Box

100 William J Clark Drive  
Conway AR 72032

# Table of Contents

## DC Repair Report

**Arkansas Box**  
100 William J Clark Drive  
Conway, AR 72032

FolderID: 102665  
FormID: 19806452

## DC Repair Report Rev. 2

**Location:** MOTOR SHOP LR

Job Number: 102665

**Description:**50 HP DC

Hi-Speed Job Number: 102665

**Manufacturer:** Reliance

**Serial Number:** 01KSW06759H-ZH

HP/KW: 50 (HP)

RPM: 2100

Frame: MC2512ATZ

**Armature Voltage:** 500 (Volts)

**Armature Current:** 86 (Amps)

**Field Voltage:** 300 (Volts)

**Field Current :** 1.9 (Amps)

**J-Box Included:** Yes

Date Received: 03/19/2024

Bearing RTDS:	No
---------------	----

Winding RTDS: No

**Mounting Orientation :** Horizontal

Priorities Found:  **10 - Good**

## Overall Condition

1. Describe the Overall Condition of the Equipment as Received

**Tach shaft bent.**

- ## 2. Nameplate Picture



Hi-Speed Industrial Service disclaims all warranties, both express and implied, relating to the information, reports, opinions and analysis disclosed to the Customer by Hi-Speed. Hi-Speed shall not be liable for any errors or omissions, or any losses, injury or damages arising from the use of such information, reports, opinions and analysis by the Customer.







Hi-Speed Industrial Service disclaims all warranties, both express and implied, relating to the information, reports, opinions and analysis disclosed to the Customer by Hi-Speed. Hi-Speed shall not be liable for any errors or omissions, or any losses, injury or damages arising from the use of such information, reports, opinions and analysis by the Customer.

Printed on 5/8/2024

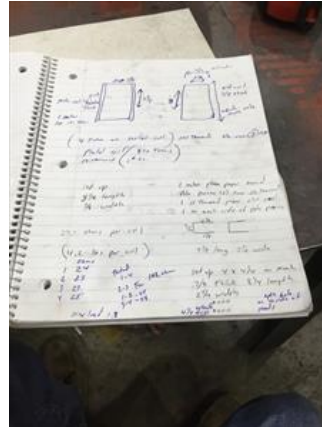
Powered by [INSPECTALL](#)

1.2



Hi-Speed Industrial Service disclaims all warranties, both express and implied, relating to the information, reports, opinions and analysis disclosed to the Customer by Hi-Speed. Hi-Speed shall not be liable for any errors or omissions, or any losses, injury or damages arising from the use of such information, reports, opinions and analysis by the Customer.







3. Distance From the End of the Shaft to the end of the Face of the Sheave/Coupling

Na

#### Initial Mechanical/Electrical

4. Does the Shaft Turn Freely? (Y) Yes

5. Does Shaft Have Visible Damage? (No) No

6. Assembled Shaft Runout 0.001 Inches

7. Assembled Shaft End Play Inches

Na

8. Air Gap Variation <10%

Na

9. Lead Condition (P) Pass



10. Lead Length 12 Inches

11. Frame Condition (P) Pass

12. Fan Condition (NA) Not Applicable



13. Brush Information

Brush Number	Quantity	Condition
0451AC	4	replace



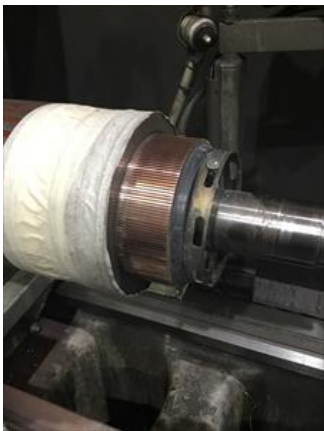
14. Brush Holder Condition - Verify proper gap to Commutator



Incoming Electrical Test

15. General Condition of the Armature/Commutator

Polish



Polished commutator  
Gary

16. Armature Insulation Resistance to Ground

3.585 Gigohms



17. Field Circuit Insulation Resistance to Ground

14.43 Gigohms



18. Interpole Circuit Insulation Resistance to Ground

3.44 Gigohms



19. Total Field Ohms

85.90000000000001

Hi-Speed Industrial Service disclaims all warranties, both express and implied, relating to the information, reports, opinions and analysis disclosed to the Customer by Hi-Speed. Hi-Speed shall not be liable for any errors or omissions, or any losses, injury or damages arising from the use of such information, reports, opinions and analysis by the Customer.



20. Field Ohms	
Between F1/F2	Between F3/F4
44	42.1



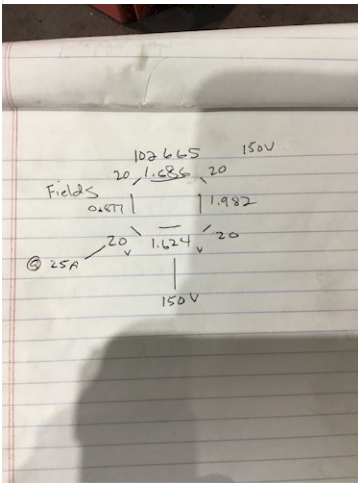
21. MegOhms between Fields and Series




22. Series Drop Test 1&2	
Series 1	Series 2
Na	




23. Series Drop Test 3&4			
Series 3		Series 4	
Na			
24. Field Drop Test Fields 1&2			
Total AC Voltage		Field #1	Field #2
1.5		1.624	0.877
25. Field Drop Test Fields 3&4			
Field #3		Field #4	Field #2
1.686		1.982	
26. Field Drop Test Fields 5&6			
Field #5		Field #6	Field #2
Na			
27. Field Drop Test Fields 7&8			
Field #7		Field #8	Field #2
Na			
28. Interpole Drop Test 1&2			
Total AC Voltage		Interpole #1	Interpole #2
		20	20
25 amps			
29. Interpole Drop Test 3&4			
Interpole #3		Interpole #4	Field #2
20		20	
30. Interpole Drop Test 5&6			
Interpole #5		Interpole #6	Field #2



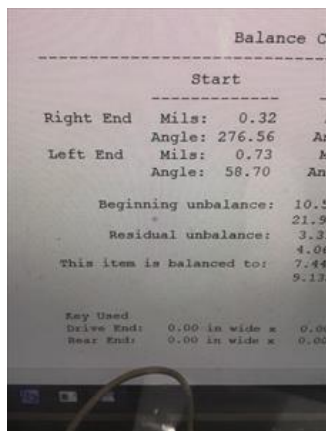
31. Interpole Drop Test 7&8			
Interpole #7		Interpole #8	Field #2
Na			

32. Armature Number of Bars - Bar to Bar Test		
Number of Bars	Bar to Bar Test	
<div> <div></div> Na </div>		
<b>Mechanical Inspection</b>		
33. Shaft Runout Drive End	0.001 inches	
34. Shaft Runout Armature		
Drive End Bearing Journal	Armature Core	ODE Bearing Journal
<div> <div></div> Na </div>		
35. Drive End Bearing Number	6312 2RS	
36. Drive End Bearing Quantity	1	
37. Drive End Bearing Type	(Ball) Ball Bearing	
38. Drive End Lubrication Type	(Grease) Grease Lubricated	
39. Drive End Bearing Insulation or Grounding Device?		
<div> <div></div> None </div>		
40. Drive End Wavy Washer/Snap-Ring Other Retention Device?	wavy washer	
41. Drive End Bearing Condition	replace	
42. Opposite Drive End Bearing Number	6210	
43. Opposite Drive End Bearing Quantity	1	
44. Opposite Drive End Bearing Type	(Ball) Ball Bearing	
45. Opposite Drive End Lubrication Type	(Grease) Grease Lubricated	
46. Opposite Drive End Bearing Insulation or Grounding Device?		
<div> <div></div> None </div>		
47. Opposite Drive End Wavy Washer/Snap-Ring Other Retention Device?	none	
48. Opposite Drive End Bearing Condition	replace	
49. Signature of Technician who Performed Teardown	Terrence Holland	
		
50. List Parts Needed Prior to Reassembly	Brushes, bearings, rewind, and recondition. Also need Aegis grounding ring and insulated bearing.	
<b>Mechanical Fits - Armature</b>		
51. Coupling Fit Closest to Bearing Housing		
0 Degrees	60 degrees	120 degrees
<div> <div></div> Na </div>		
52. Coupling Fit Closest to the End of the Shaft		
0 Degrees	60 degrees	120 degrees
<div> <div></div> Na </div>		
53. Drive End Bearing Shaft Fit		
0 Degrees	60 Degrees	120 Degrees
2.3622	2.3621	2.3622
54. Drive End Bearing Shaft Fit Condition	(P) Pass	

55. Opposite Drive End Bearing Shaft Fit		
0 Degrees	60 Degrees	120 Degrees
1.9687	1.9686	1.9687
56. Opposite Drive End Bearing Shaft Fit Condition		(P) Pass
57. Shaft Air Seal Fits		
Drive End Air Seal	Opposite Drive End Air Seal	
Na		
<b>Mechanical Fits- Bearing Housings</b>		
58. Drive End - End Bell Bearing Fit		
0 Degrees	60 Degrees	120 Degrees
5.1189	5.1187	5.1189
59. Drive End - Endbell Bearing Fit Condition		(P) Pass
60. Opposite Drive End - End Bell Bearing Fit		
0 Degrees	60 Degrees	120 Degrees
3.5442	3.544	3.5440
61. Opposite Drive End - Endbell Bearing Fit Condition		(P) Pass
62. Bearing Cap Condition		
Drive End	Opposite Drive End	
pass	na	
63. End Bell Air Seal Fits		
Drive End Air Seal	Opposite Drive End Air Seal	
Na		
64. List any Machine work Needed Below		
Polish comm, and insulate one housing fit.		
65. Signature of Technician Performing Measurements		Terrence. Holland
		
<b>Root Cause of Failure</b>		
66. Failure Locations		
Tach shaft bent from excessive force. Fields check bad. Replace brushes		
67. Root Cause of Failure		
Fields checked bad. Ohm readings out of balance.		
<b>Commutator Data</b>		
68. Total Copper Segment Length	inches	
Na		
69. Number of Bars		
Na		
70. Number of Wires Per Copper Bar and Size		
Number of Wires per Bar	Wire Size	
Na		



71. Equalizers per Copper Bar and Equalizer Wire Size			
Equalizers per Bar		Wire Size	
Na			
72. Document Commutator Diameter, Minimum and Max			
Current Comm Diameter	Minimum Comm Diameter	Maximum Comm Diameter	
Na			
73. Commutator Shaft Diameter			
Front Shaft Diameter	Back Shaft Diameter		
Na			
74. Commutator Type			
Na			
75. Commutator Bore			
Na			
76. Signature of Technician Recording Data			
Na			
<b>Dynamic Balance Report</b>			
77. Rotor Weight and Balance Grade			
Rotor Weight	Balance Grade		
Na			
78. Initial Balance Readings			
Drive End Readings	Opposite Drive End Readings		



## 79. Final Balance Readings

Drive End Readings

Opposite Drive End Readings



## 80. Signature of the Balance Technician

Cw

## Post Armature Rewind Testing

## 81. Post Rewind Armature Insulation Resistance to Ground

Megohms

Na

## 82. Post Rewind Field Circuit Measure the Insulation Resistance to Ground

Megohms



## 83. Post Rewind Armature Number of Bars - Bar to Bar Test

Number of Bars

Bar to Bar Test

Na

## 84. Post Rewind Field Circuit Insulation Resistance to Ground

Megohms

Na

## 85. Post Rewind Interpole Circuit Insulation Resistance to Ground

2.135 Gigohms

Witness: TRH/RHR



## 86. Post Rewind Field Drop Test Fields 1&amp;2

Total AC Voltage	Field #1	Field #2
297	3.56	3.78

## 87. Post Rewind Field Drop Test Fields 3&amp;4

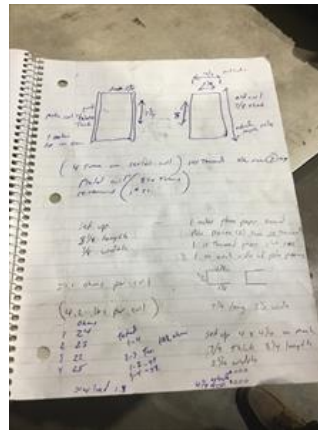
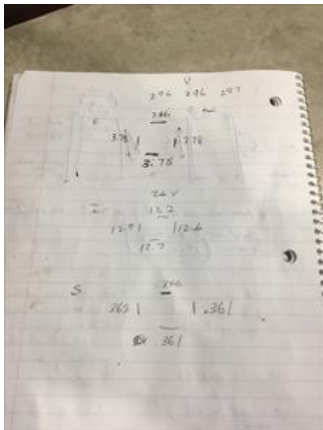
Field #3	Field #4	Field #2
3.78	3.78	

RHR. TRH

## 88. Post Rewind Field Drop Test Fields 5&amp;6

Field #5	Field #6	Field #2

Na



## 89. Post Rewind Field Drop Test Fields 7&amp;8

Field #7	Field #8	Field #2

Na

## 90. Post Rewind Interpole Drop Test 1&amp;2

Total AC Voltage	Interpole #1	Interpole #2
26	12.2	12.7



91. Post Rewind Interpole Drop Test 3&4		
Interpole #3	Interpole #4	Field #2
12.9	12.6	
92. Post Rewind Interpole Drop Test 5&6		
Interpole #5	Interpole #6	Field #2
Na		
93. Post Rewind Interpole Drop Test 7&8		
Interpole #7	Interpole #8	Field #2
Na		
<b>Post Mechanical Repair</b>		
94. Post Repair Coupling Fit Closest to Bearing Housing		
0 Degrees	60 degrees	120 degrees
Na		
95. Post Repair Coupling Fit Closest to the End of the Shaft		
0 Degrees	60 degrees	120 degrees
Na		
96. Post Repair Drive End Bearing Shaft Fit		
0 Degrees	60 Degrees	120 Degrees
Na		
97. Post Repair Drive End Bearing Shaft Fit Condition		
Na		
98. Post Repair Drive End Opposite Drive End Bearing Shaft Fit		
0 Degrees	60 Degrees	120 Degrees
Na		
99. Post Repair Drive End Opposite Drive End Bearing Shaft Fit Condition		
Na		
100. Post Repair Drive End - End Bell Bearing Fit		
0 Degrees	60 Degrees	120 Degrees
Na		
101. Post Repair Drive End - Endbell Bearing Fit Condition		
Na		
102. Post Repair Opposite Drive End - End Bell Bearing Fit		
0 Degrees	60 Degrees	120 Degrees
Na		
103. Post Repair Opposite Drive End - Endbell Bearing Fit Condition		
Na		
104. Post Repair Bearing Cap Condition		
Drive End	Opposite Drive End	
Na		

Hi-Speed Industrial Service disclaims all warranties, both express and implied, relating to the information, reports, opinions and analysis disclosed to the Customer by Hi-Speed. Hi-Speed shall not be liable for any errors or omissions, or any losses, injury or damages arising from the use of such information, reports, opinions and analysis by the Customer.

105. Post Repair End Bell Air Seal Fits

Drive End Air Seal

Opposite Drive End Air Seal

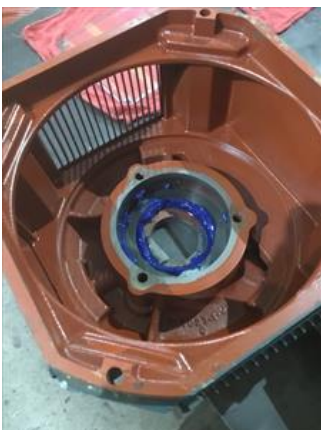
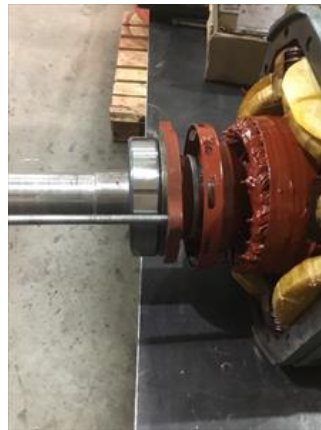
Na

106. Signature of Tech Performing Mechanical Repairs

Na

**Assembly**

107. Take Pictures of all Major Components Prior to Reassembly



108. Verify Brush Box Holders Have the Proper Clearance, and Brushes have been Seated Properly

**(P) Pass**

Hi-Speed Industrial Service disclaims all warranties, both express and implied, relating to the information, reports, opinions and analysis disclosed to the Customer by Hi-Speed. Hi-Speed shall not be liable for any errors or omissions, or any losses, injury or damages arising from the use of such information, reports, opinions and analysis by the Customer.

109. Assembled Shaft End Play and Runout		
Shaft Endplay		Shaft Runout
<div> <div></div> <div>Na</div> </div>		
110. Perform No-Load Test Run, Record Armature Voltage and Current		
Voltage		Current



111. Perform No-Load Test Run, Record Field Voltage and Current		
Voltage		Current



112. Document Vibration Readings Drive End		
Horizontal	Vertical	Axial
0.02	0.03	0.02
113. Document Vibration Readings Opposite Drive End		
Horizontal	Vertical	Axial
0.03	0.03	0.04
114. Perform Full-Load Test Run, Record Armature Voltage and Current		
Voltage	Current	
<div><div></div><div>Na</div></div>		

Hi-Speed Industrial Service disclaims all warranties, both express and implied, relating to the information, reports, opinions and analysis disclosed to the Customer by Hi-Speed. Hi-Speed shall not be liable for any errors or omissions, or any losses, injury or damages arising from the use of such information, reports, opinions and analysis by the Customer.



115. Perform Full-Load Test Run, Record Field Voltage and Current			
Voltage		Current	
Na			
116. Document Vibration Readings Under Full Load Drive End			
Horizontal	Vertical	Axial	
Na			
117. Document Vibration Readings Under Full Load Opposite Drive End			
Horizontal	Vertical	Axial	
Na			
118. Ambient Temperature			Fahrenheit
Na			
119. Drive End Bearing Temps Under Full Load			
5 Minutes	10 Minutes	15 Minutes	
Na			
120. Opposite Drive End Bearing Temps Under Full Load			
5 Minutes	10 Minutes	15 Minutes	
Na			
121. Final Test Run Sign-Off			Cw
			
Co sign: RRW			

122. Document Final Condition With Pictures



123. Final QC Sign-Off

Cw





Co sign: Trevor Hall



## STANDARD TERMS AND CONDITIONS FOR PURCHASE OF GOOD AND/OR SERVICES

1. **APPLICABILITY.** The sale of any and all goods and/or services by Mock, Inc. d/b/a Hi-Speed Industrial Service ("Hi-Speed") shall be specifically conditioned upon and subject to the following terms and conditions which are incorporated by reference into any contracts and purchase orders with Hi-Speed, and which shall form and become a part of any agreement related thereto. Buyer's acceptance of any offer or quotation made by Hi-Speed for sale of any goods or services is expressly made subject to the terms and conditions set forth herein and to be so effective, Buyer need not sign or approve these Terms and Conditions to be bound hereunder provided a copy of same is provided to Buyer through any means. None of the terms and conditions contained herein may be added to, expanded, changed, modified, superseded or otherwise altered except as revised in writing and duly executed by Hi-Speed, and all orders received by Hi-Speed shall be governed only by the terms and conditions contained herein, notwithstanding any terms, conditions or provisions of any purchase order, release order, authorization or any other form issued by the Buyer. Hi-Speed hereby objects to any additional, modified, changed, deleted, altered or other terms and conditions not contained herein and notifies Buyer that any such terms or provisions are expressly rejected by Hi-Speed.
2. **PRICE.** All quoted prices shall remain firm and binding for a period of thirty (30) days from the date of quotation or for the period specifically stated in the quotation. The price for any and all goods and/or services ordered or approved by Buyer after thirty (30) days from the date of any quotation are subject to any increase in price that may occur after the expiration of thirty (30) days from the issuance of the quotation and the date the Buyer releases any shipment.
3. **SCOPE OF GOODS AND/OR SERVICES.** The goods and/or services provided by Hi-Speed pursuant to any quotation shall be limited exclusively to those goods and/or services expressly identified therein. Hi-Speed does not assume any responsibility and/or liability for the failure to provide any other goods and/or services not identified in any quotation. Modifications, additions or deletions to or from the scope referenced in any quotation shall only be effective if evidenced in writing and signed by Hi-Speed. The sale of any of all goods and/or services affected by such modification, addition or deletion shall be subject to these same Standard Terms and Conditions whether or not referenced therein.
4. **BILLING AND PAYMENT TERMS.** Hi-Speed shall invoice Buyer for all goods and/or services as same are rendered at the address listed on the quotation. Payments for all goods and/or services shall be due thirty (30) days from the date of the current invoice or as otherwise set forth in the quotation. Late payments are subject to a late fee of 5% of the total invoice amount. Recurring late payments may lead to a deposit requirement on future services or sale of goods. Buyer shall be liable to Hi-Speed for any and all fees and expenses incurred by Hi-Speed to collect any invoices or to enforce these Standard Terms and Conditions, including but not limited to, attorney's fees.
5. **DELIVERY OF GOODS AND/OR SERVICES.** Unless otherwise identified in the quotation, all shipments are F.O.B. Hi-Speed's warehouse and the title to and all risk of loss with respect to any goods shipped shall pass to Buyer when such goods are delivered to the carrier at Hi-Speed's warehouse. Hi-Speed will use its best efforts to affect delivery by the date or dates specified in the quotation. However, Hi-Speed shall not be liable for delay in or failure to make shipment, or to perform services, by any identified date for any reason whatsoever, including but not limited to, causes beyond its reasonable control, such as strikes, fires, floods, epidemics, quarantines, restrictions, severe weather, embargos, acts of God, or public enemy, war, riot, delays in transportation or the inability to obtain necessary labor, materials or manufacturing facilities.
6. **DELIVERY SITE AND TIME FOR PERFORMANCE.** Hi-Speed and Buyer agree that time is of the essence for the purchase order and that Buyer shall fully cooperate with Hi-Speed in order to allow Hi-Speed full access to prosecute its work diligently and in an orderly manner. Buyer shall assist Hi-Speed in every way possible to avoid delaying, disrupting or interfering with the progress of Hi-Speed's work at the project site. In the event Hi-Speed's work is delayed, hindered, suspended, disrupted, re-sequenced or interfered with or rendered less efficient or more costly or adversely affected in any way as a result of acts or omissions of Buyer or other contractors or employees of Buyer or by any other reason beyond Hi-Speed's control and without the fault of Hi-Speed, then, in such event, Buyer shall be liable to Hi-Speed for any damages, additional costs, expenses, labor, materials, man hours, acceleration costs, overtime, additional jobsite overhead, extended home office overhead, and any and all other direct and indirect expenses of whatsoever nature or kind, caused in whole or in part, as a result of any of the above-referenced occurrences. Hi-Speed's project records will be the basis for computing the additional costs and damages of Hi-Speed's labor, materials, expenses and overhead related to such changes. BUYER WARRANTS THAT THE SITE FOR DELIVERY OR INSTALLATION OF ANY GOODS AND/OR FOR THE PERFORMANCE OF ANY SERVICES SHALL BE READY AND ADEQUATE FOR HI-SPEED'S DELIVERY OF GOODS AND/OR PERFORMANCE OF SERVICES AND THAT HI-SPEED SHALL HAVE FULL ACCESS THERETO, FREE OF ALL OBSTRUCTIONS. BUYER SHALL ASSUME ALL EXTRA COSTS ASSOCIATED WITH HI-SPEED'S INABILITY TO INSTALL ANY GOODS OR PERFORM ANY SERVICES AS A RESULT OF BUYER'S FAILURE TO COMPLY WITH THIS PROVISION. HI-SPEED MAY NOT INSPECT THE SITE PRIOR TO DELIVERY AND/OR INSTALLATION OF GOODS AND/OR PERFORMANCE OF SERVICES AND MAKES NO WARRANTY AS TO THE SUFFICIENCY OF THE SITE FOR THE DELIVERY AND/OR INSTALLATION OF GOODS AND/OR THE PERFORMANCE OF SERVICES AT SUCH SITE.
7. **INSPECTION/ACCEPTANCE.** All goods and services ordered pursuant to any quotation shall be subject to inspection by Buyer after delivery or performance to determine conformity with the quotation and/or purchase order and Hi-Speed's advertised or published specifications. Buyer shall have a period of thirty (30) days from shipment of goods at the delivery destination specified in the quotation within which to inspect the goods for conformity with the quotation, order and/or Hi-Speed's advertised and published specifications and to provide Hi-Speed with written notice of any discrepancy or rejection. Buyer shall have a period of thirty (30) days following completion of any services within which to inspect the services for conformity with the quotation, purchase order and/or Hi-Speed's advertised and published specifications and to provide Hi-Speed with written notice of any discrepancy or rejection. If the goods delivered or services performed do not so conform, upon delivery of notice to Hi-Speed of any discrepancy, nonconformance or rejection, Hi-Speed shall have sixty (60) days to cure the alleged discrepancy and/or nonconformance. If Hi-Speed fails to cure in this time period, Buyer shall have the right to reject such goods or services. After the cure period, goods that have been delivered and rejected, in whole or in part, shall be returned to Hi-Speed. Buyer shall notify Hi-Speed and arrange for the return of the goods as required. Should such non-conforming services be rejected Hi-Speed shall, at its sole cost, re-perform the non-conforming services. Inspection or failure to inspect on any occasion shall not affect Buyer's rights under the warranty provisions herein.
8. **WARRANTIES.** Hi-Speed warrants that all goods shall conform in all material aspects to the goods identified in the quotation to Buyer and/or purchase order, and Hi-Speed makes to Buyer the manufacturer's express warranty for any goods sold to Buyer, which is offered by the manufacturer at the time of acceptance of any quotation by Buyer. This warranty is conditioned upon the installation, operation, and maintenance of the goods in accordance with the manufacturer's recommendations and/or standard industry practice and the goods at all times being operated or used under normal operating conditions for which they were designed. Hi-Speed, at its sole option, will repair or

replace any defective or non-conforming goods in accordance with the applicable manufacturer's warranty. Warranty for any defective or incorrect parts is limited to the repair or replacement of those parts. Hi-Speed warrants that all services will conform in all material respects to the description of services identified in the quotation and will be performed in a good and workmanlike manner in accordance with industry practices and standards. Should the services be reasonably rejected or not conform with the foregoing warranties, Hi-Speed shall, at its sole cost, re-perform the defective or nonconforming services. Notwithstanding the foregoing, these warranties do not extend to goods or services to the extent that such goods have been subject to misuse, neglect or abuse not caused by Hi-Speed or have been used in violation of the approved written instructions furnished to Buyer. THE FOREGOING REPRESENTS THE SOLE AND EXCLUSIVE WARRANTY GIVEN BY HI-SPEED WITH RESPECT TO ALL GOODS SOLD AND IS IN LIEU OF ALL OTHER WARRANTIES EITHER EXPRESS OR IMPLIED. HI-SPEED EXPRESSLY DISCLAIMS ALL OTHER WARRANTIES INCLUDING MERCHANTABILITY AND FITNESS FOR A PARTICULAR USE OR PURPOSE. BUYER WAIVES ANY CLAIM THAT THESE EXCLUSIONS OR LIMITATIONS DEPRIVE IT OF AN ADEQUATE REMEDY AT EQUITY OR LAW OR CAUSE THIS AGREEMENT TO FAIL IN ITS ESSENTIAL PURPOSE. BUYER SHALL BE ENTITLED TO NO OTHER REMEDY OTHER THAN AS SET FORTH HEREIN, REGARDLESS OF THE CLAIM OR CAUSE OF ACTION, WHETHER BASED IN CONTRACT, TORT, NEGLIGENCE, GOODS LIABILITY, STRICT LIABILITY OR OTHERWISE.

9. **LIMITATION OF DAMAGES.** HI-SPEED SHALL HAVE NO LIABILITY TO BUYER WITH RESPECT TO THE SALE OR DELIVERY OF ANY GOODS OR THE REPAIR THEREOF OR WITH RESPECT TO THE SALE OR PERFORMANCE OF ANY SERVICES, FOR LOST PROFITS, SPECIAL, CONSEQUENTIAL, EXEMPLARY, PUNITIVE OR INCIDENTAL DAMAGES OF ANY KIND OR NATURE WHETHER ARISING IN CONTRACT, TORT, GOODS LIABILITY OR OTHERWISE, EVEN IF HI-SPEED WAS ADVISED OF THE POSSIBILITY OF SUCH LOSS OR DAMAGES. HI-SPEED SHALL NOT BE LIABLE FOR ANY DAMAGES OR DELAYS CAUSED BY ANY FAILURE TO MAKE ANY DELIVERY OF GOODS BY ANY EXPECTED TIME OR DATE OR THE FAILURE TO PROVIDE OR COMPLETE ANY SERVICES BY ANY EXPECTED DATE OR TIME. IN NO EVENT SHALL HI-SPEED BE LIABLE TO BUYER FOR ANY DAMAGES WHATSOEVER IN EXCESS OF THE TOTAL PRICE PAID FOR ALL GOODS AND/OR SERVICES HEREUNDER OR REFERENCED IN ANY QUOTATION OR THE PURCHASE ORDER.
10. **SEVERABILITY.** The partial or complete invalidity of any provision of these Standard Terms and Conditions shall not affect the enforceability of the remainder of these Standard Terms and Conditions. If any provision is found to be invalid or unenforceable, that portion shall be modified to make it enforceable or shall be stricken and the remainder of these Standard Terms and Conditions shall enforced.
11. **GOVERNING LAW AND JURISDICTION.** Any controversy arising out of any quotation, the purchase order, the goods sold or delivered, repair or replacement thereof, or any services provided pursuant to any quotation or any purchase order, or these Standard Terms and Conditions shall be governed by the laws of the state of Tennessee without regard to any choice of law provisions and any cause of action related in any manner thereto shall be brought only in the state or federal courts of Shelby County, Tennessee.
12. **ABANDONED EQUIPMENT.** Hi-Speed requires that Buyer promptly pick up or provide shipment instructions for Buyer equipment or other Buyer property in Hi-Speed's possession. If equipment or other Buyer property is left with Hi-Speed and not picked up within six (6) months after Hi-Speed's final action related to the applicable property (e.g. evaluation, teardown, estimate, completion of services), Hi-Speed will consider such property abandoned and may dispose of it in accordance with applicable law. Buyer agrees to hold Hi-Speed harmless for any damage or claim for such abandoned property and acknowledges that Hi-Speed may discard or recycle it at Hi-Speed's sole and absolute discretion. Specifically, Hi-Speed may sell Buyer's abandoned property at a private or public sale and retain the proceeds to offset Hi-Speed's storage, inspection and servicing costs. For the avoidance of doubt, Hi-Speed reserves its statutory and other lawful liens for unpaid charges related to abandoned property.
13. **FORCE MAJEURE.** Neither party shall be responsible for any delay or failure in performance of any party of the quotation, purchase order or these Standard Terms and Conditions to the extent that such delays or failures are caused by fire, flood, earthquake, explosion, war, embargo, government requirement, civil or military authority, acts of God, or any other circumstances beyond its reasonable control and not involving any fault or negligence on the party affected ("Condition"). If any such Condition occurs, the party delayed or unable to perform shall promptly give written notice to the other party and, if such Condition remains at the end of thirty (30) days, the party affected by the other party's delay and inability to perform may elect to (i) terminate such order or part thereof, or (ii) suspend the order for the duration of the Condition, if the Buyer is the suspending party, buy elsewhere comparable material to be sold under the order and apply to any commitment the purchase price of such purchase, and resume performance of the order once the Condition ceases, with an option in the affected party to extend the period of this order up to the length of the time the Condition endures.
14. **NONWAIVER.** No course of dealing or failure of either party to strictly enforce any term, right, or condition of these Standard Terms and Conditions will be construed as a waiver of such term, right or condition. Any waiver by Hi-Speed will only be in writing and will waive no succeeding breach of a term, right or condition.
15. **ASSIGNMENT.** The rights and obligations of the parties shall neither be assigned nor delegated without the prior written consent of the other party. However, any party may assign or delegate its respective rights and obligations, in whole or in part, (i) to any subsidiary, (ii) pursuant to other financing, merger or reorganization or (iii) pursuant to any sale or transfer of substantially all of the assets of the assigning party. These Standard Terms and Conditions shall bind the heirs, successors and assigns of the parties hereto.
16. **NO INDIVIDUAL LIABILITY.** Notwithstanding any other agreement to the contrary, the Buyer agrees that in no event will the Buyer hold and Hi-Speed owner, director, officer or employee personally liable for unintentional tortious conduct or conduct that constitutes the breach of any contract between Hi-Speed and the Buyer, even if the Hi-Speed owner, director, officer or employee is or could be construed to be a party to such contract.