



USG Greenville, MS
April 2024
Infrared Survey Report



All scheduled electrical panels were scanned using a **FLIR T865** infrared camera. The following report only contains defects that were found during the survey. Below is our classification system for each defect included in this report. If there are any questions or comments, please feel free to contact us at any time.



employs a three-tier defect rating system:

CLASS I: A defect or defects are present that are likely to cause a problem in the long term (2-6 months). Should be addressed in the normal course of maintenance scheduling.

CLASS II: A defect or defects are present that are likely to cause a failure in the short term (less than 2 months). Should be addressed as soon as practical, on a high maintenance priority. Consideration should be given to increase monitoring frequency.

CLASS III: A defect or defects are present that make continued component reliability unpredictable and likelihood of secondary damage is high. Consideration should be given to an unscheduled shutdown to correct.



tests and inspects industrial machinery and equipment and makes recommendations concerning maintenance and repairs based on its experience in the field of industrial repair and maintenance. The information contained herein is provided as an opinion only, not as a guaranty or warranty of the matters discussed herein.

Component

Thermal Heater

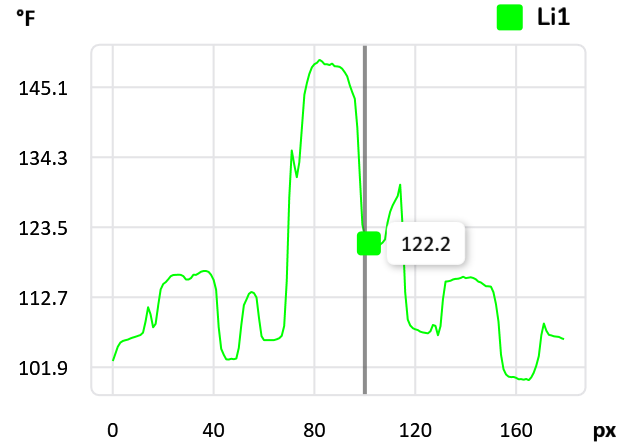
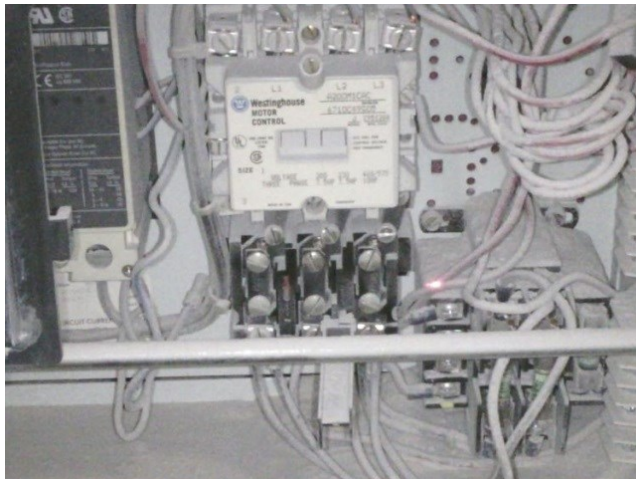
Equipment/Bucket ID

MCC 9B1 M0134 South 2x4 Hopper Conveyor



Measurements

Li1	
Max	149.4 °F
Avg	116.2 °F
Min	99.9 °F
Sp1	128.0 °F



Fault

Heater connections

Defect Rating

CLASS II

Recommendations

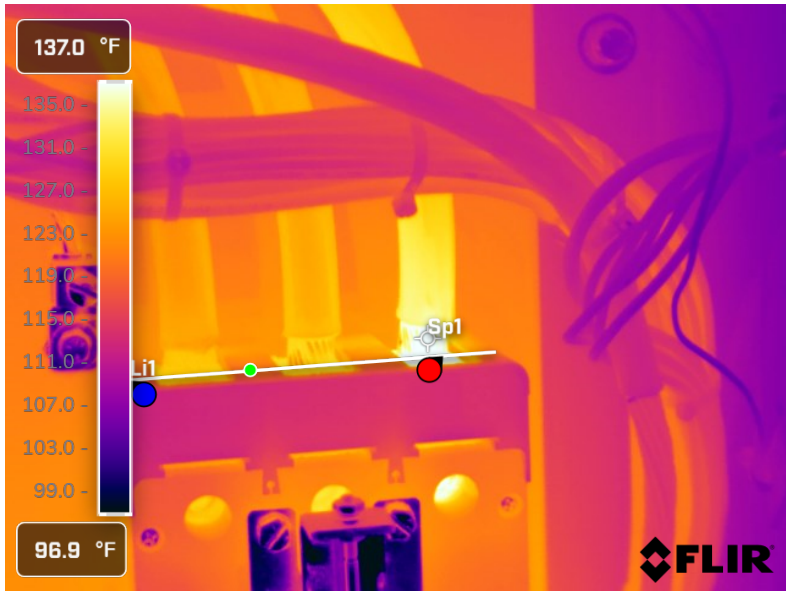
B phase thermal heater appears to have an issue. It is recommended to replace heater and ensure clean and tight connections.

Component

Lead connection/lug

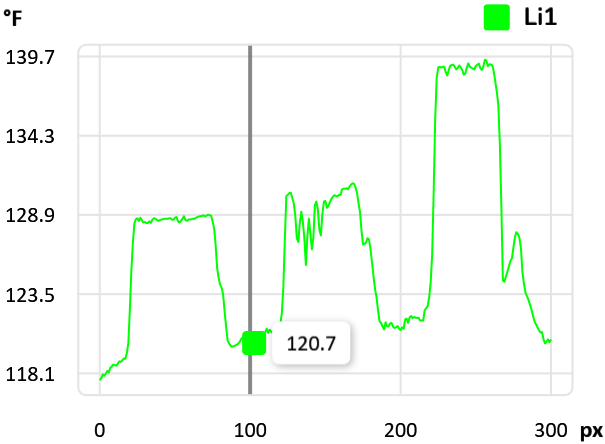
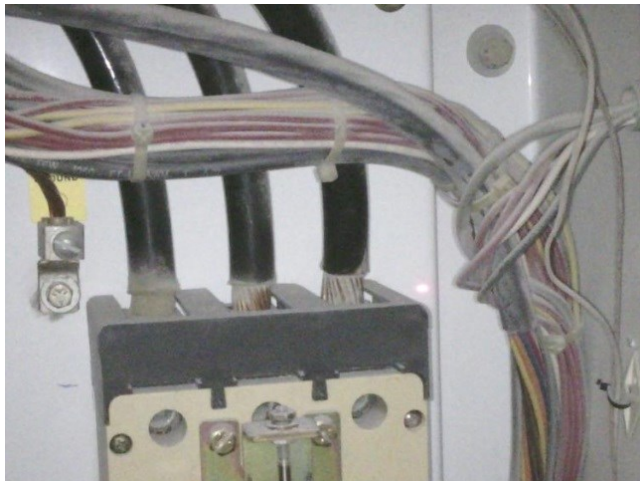
Equipment/Bucket ID

#1 Wisconsin Oven Line Side Main Breaker



Measurements

Li1	
Max	139.5 °F
Avg	126.9 °F
Min	117.7 °F
Sp1	137.8 °F



Fault

Connection issue

Defect Rating

CLASS I

Recommendations

IR image shows C phase incoming power lead to have a slight delta-T. Check connection ensuring the connection is clean and tight.

Component

Fuse Clip

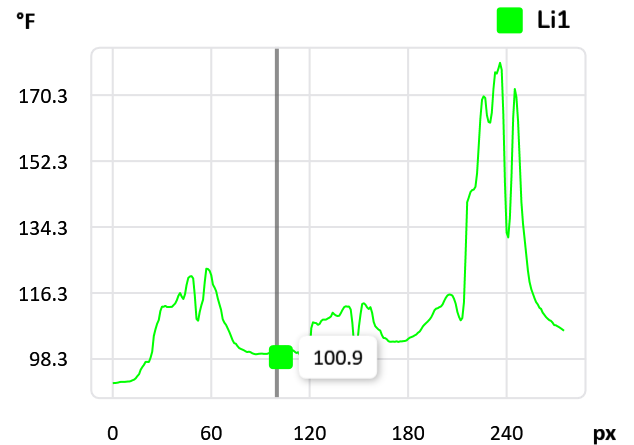
Equipment/Bucket ID

IHEI Oven Control Panel Main Power Disconnect



Measurements

Li1	
Max	179.2 °F
Avg	113.4 °F
Min	91.7 °F
Sp1	177.6 °F



Fault

Loose worn fuse clip

Defect Rating

CLASS II

Recommendations

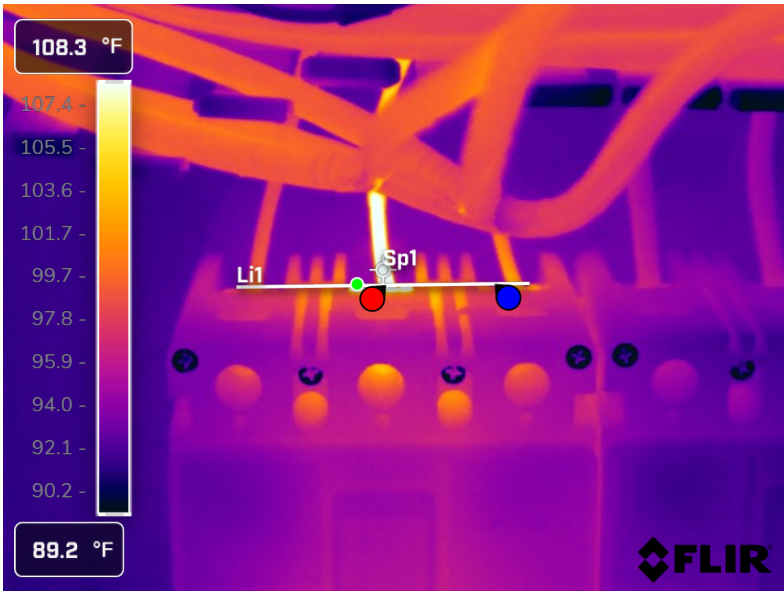
C phase fuse clip on line side appears to have an issue. Connection at fuse tab/clip may be loose and or dirty. Clean and ensure fuse tab/clip has tight connection.

Component

lead connection

Equipment/Bucket ID

IHEI Oven Control Panel 105 MCP



Measurements

Li1	
Max	116.2 °F
Avg	99.8 °F
Min	93.9 °F
Sp1	114.2 °F



Fault

Connection issue

Defect Rating

CLASS I

Recommendations

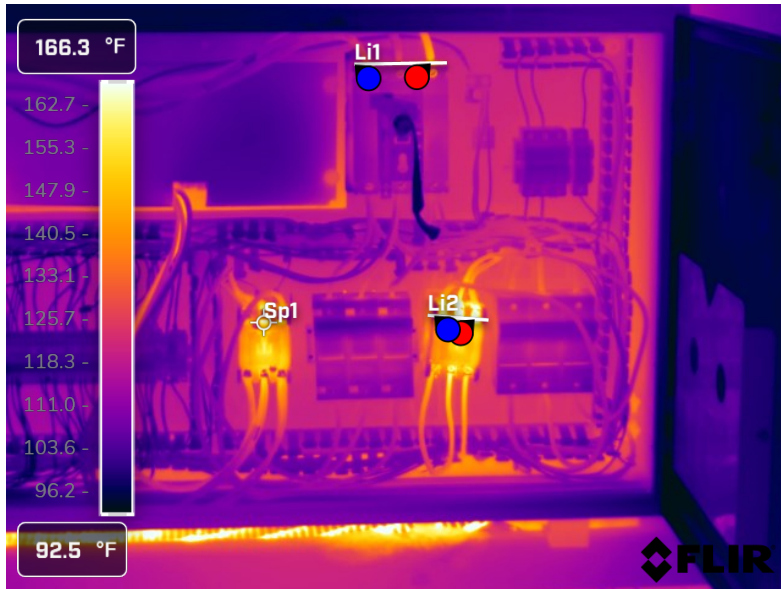
IR image shows some slight delta-T on middle lead on 105 MCP. Check lead connection and ensure a clean and tight connection.

Component

Contactors/Main Breaker Line Side C Phase

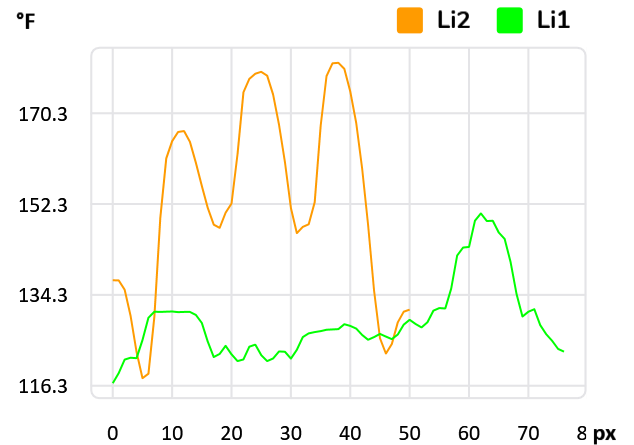
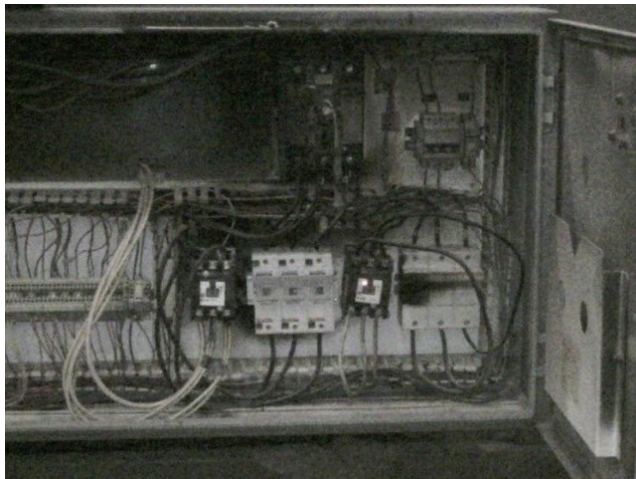
Equipment/Bucket ID

South Wrapper Heat Tunnel Unit Panel



Measurements

Li1	
Max	150.5 °F
Avg	129.1 °F
Min	116.8 °F
Li2	
Max	180.3 °F
Avg	153.0 °F
Min	117.8 °F
Sp1	161.7 °F



Fault

Contactor and connection issues

Defect Rating

CLASS I

Recommendations

A couple of issues were found in this panel. The main breaker C phase connection on line side has a slight delta-T while the two contactors appears to have some heat present. These contactors were opening and closing every second which is likely hard on these components. It is recommended to check connection on main breaker and see if some settings and can be adjusted to help with the contactors opening and closing so often.



Summary

File name	Created	Maximum temp.	Page number
FLIR0723.jpg	4/17/2024 10:18:50 AM	149.4 °F	3
FLIR0725.jpg	4/17/2024 10:23:38 AM	139.8 °F	4
FLIR0727.jpg	4/17/2024 10:35:47 AM	182.1 °F	5
FLIR0729.jpg	4/17/2024 10:37:49 AM	116.3 °F	6
FLIR0731.jpg	4/17/2024 10:41:12 AM	205.3 °F	7



This concludes our survey report. Please feel free to contact us at any time for question or comments.

Thank you for your business,

Kevin W. Maxwell



ITC Certified Level II Infrared
Thermographer

(901) 486-4565

kwilliam@gohispeed.com