




**MOST Inc.**  
**Jackson, TN**  
**November 2023 Infrared Survey Report**



All electrical panels were scanned using a  **FLIR** T865 infrared camera. The following report only contains defects that were found during the survey. Below is our classification system for each defect included in this report. If there are any questions or comments, please feel free to contact us at any time.



employs a three-tier defect rating system:

**CLASS I:** A defect or defects are present that are likely to cause a problem in the long term (2-6 months). Should be addressed in the normal course of maintenance scheduling.

**CLASS II:** A defect or defects are present that are likely to cause a failure in the short term (less than 2 months). Should be addressed as soon as practical, on a high maintenance priority. Consideration should be given to increase monitoring frequency.

**CLASS III:** A defect or defects are present that make continued component reliability unpredictable and likelihood of secondary damage is high. Consideration should be given to an unscheduled shutdown to correct.



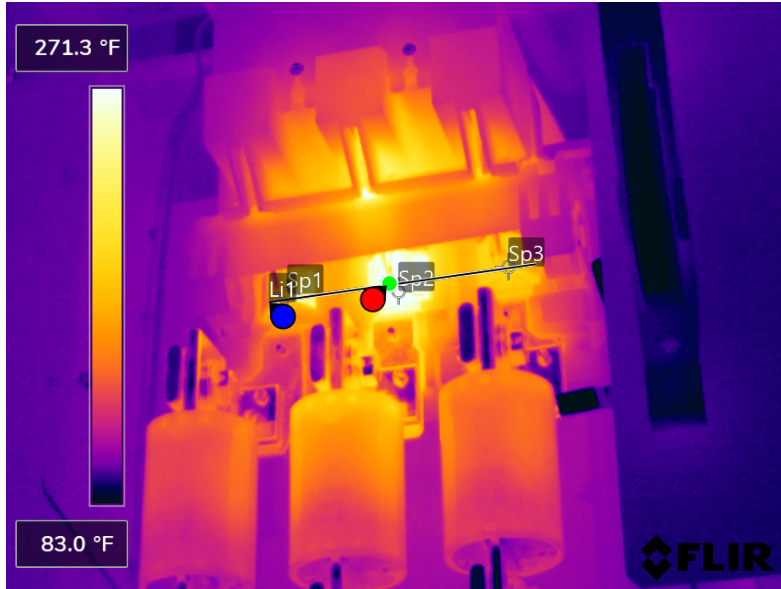
*tests and inspects industrial machinery and equipment and makes recommendations concerning maintenance and repairs based on its experience in the field of industrial repair and maintenance. The information contained herein is provided as an opinion only, not as a guaranty or warranty of the matters discussed herein.*

## Component

Fuse Knife Switch

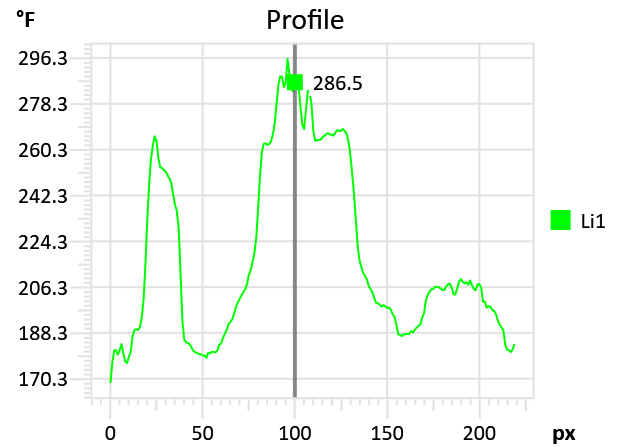
## Equipment/Bucket ID

Dust Collector Exhaust Fan WB2



### Measurements

Sp2	276.1 °F
Sp3	206.9 °F
Li1	
Max	296.0 °F
Avg	218.1 °F
Min	168.7 °F
Sp1	191.0 °F



## Fault

Loose/worn fuse knife connections

## Defect Rating

CLASS II

## Recommendations

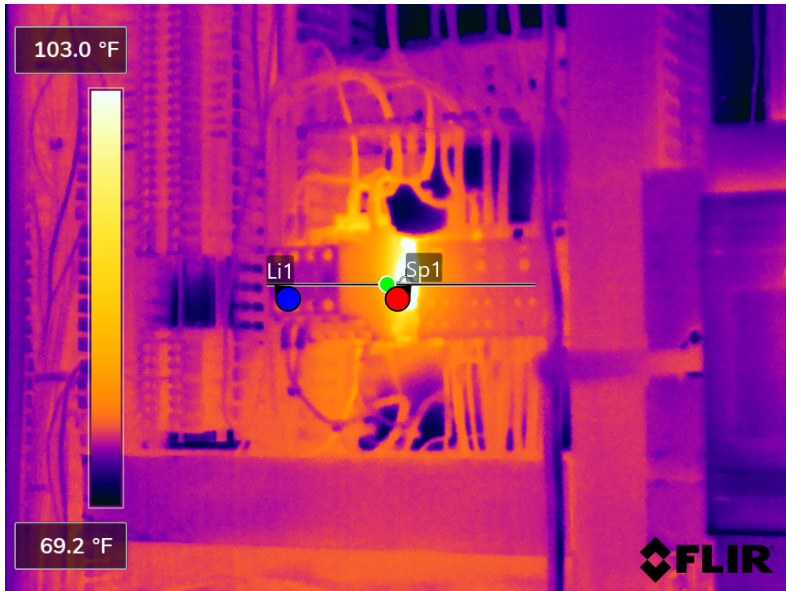
IR image shows B phase to have issues with knife switching components. Repair/replace knife components as necessary.

Component

Contactor

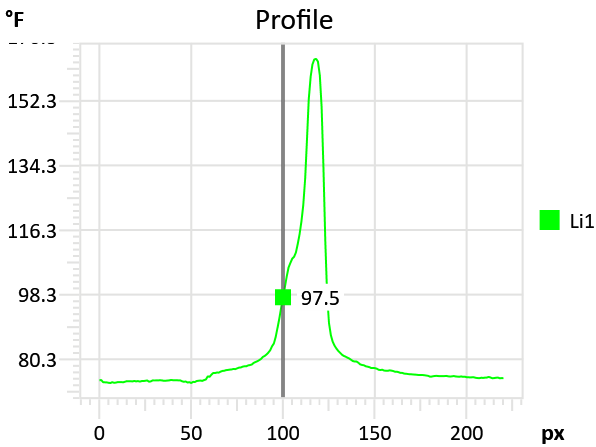
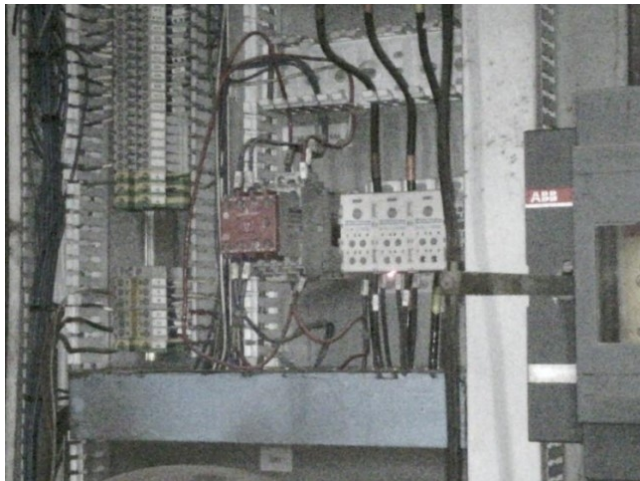
Equipment/Bucket ID

Pre-Ripper Panel



Measurements

Li1	
Max	164.0 °F
Avg	82.7 °F
Min	73.7 °F
Sp1	153.1 °F



Fault

Possible issue with contactor

Defect Rating

CLASS I

Recommendations

The IR image shows some localized heat at the back end of the contactor. This may indicate issues. Inspect contactor if possible.

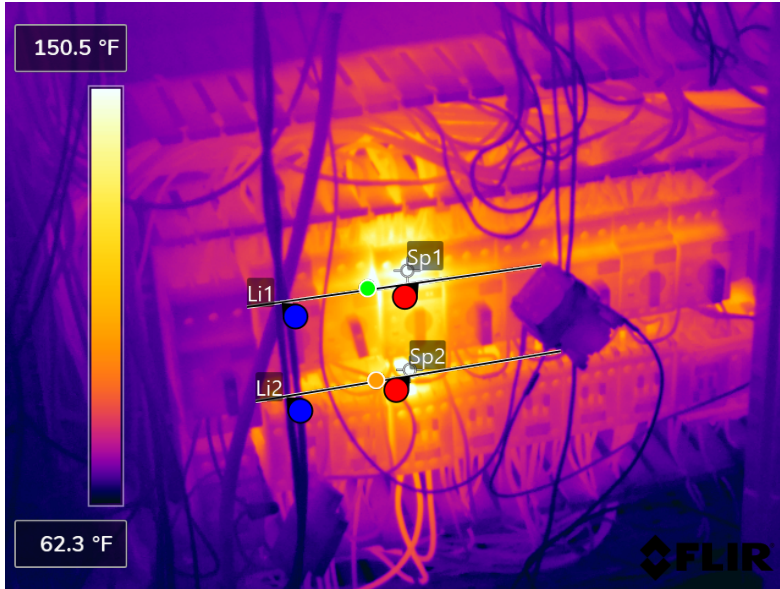


### Component

Connections on breakers

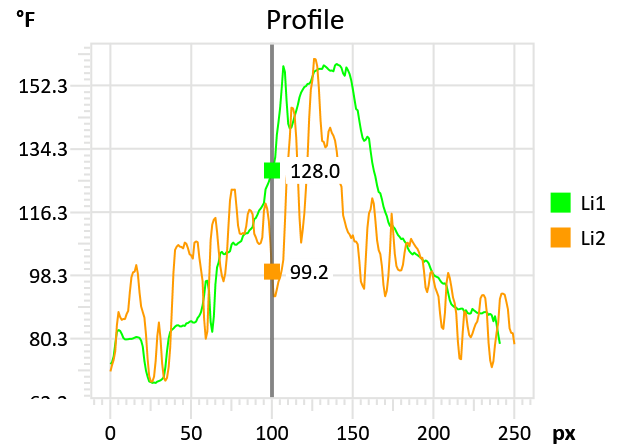
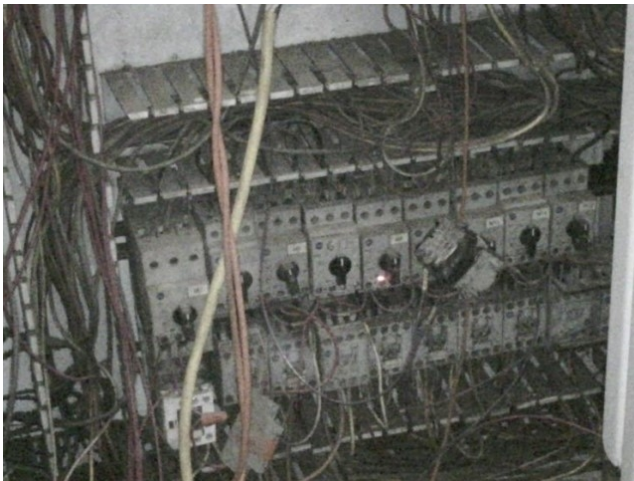
### Equipment/Bucket ID

M5 CP1



### Measurements

<b>Sp2</b>	158.7 °F
<b>Li1</b>	
Max	158.4 °F
Avg	108.7 °F
Min	67.8 °F
<b>Li2</b>	
Max	159.9 °F
Avg	102.5 °F
Min	68.2 °F
<b>Sp1</b>	158.4 °F



### Fault

Loose/dirty connections

### Defect Rating

**CLASS I**

### Recommendations

There is likely connection issues on breaker switches according to the IR image. The smaller switches third from the left look to be where the heat is at. Check these switches. Ensure all connection are clean and tight.



## Summary

File name	Created	Maximum temp.	Page number
FLIR0527.jpg	12/31/1999 6:18:35 PM	296.0 °F	3
FLIR0529.jpg	12/31/1999 7:14:51 PM	164.1 °F	4
FLIR0531.jpg	12/31/1999 7:17:51 PM	168.1 °F	5



This concludes our survey report. Please feel free to contact us at any time for question or comments.

Thank you for your business,

*Kerion W. Maxwell*



ITC Certified Level II Infrared  
Thermographer

(901) 486-4565

[kwilliam@gohispeed.com](mailto:kwilliam@gohispeed.com)