




March 2023 Infrared Survey Report



All electrical panels were scanned using a  **FLIR** T865 infrared camera. The following report only contains defects that were found during the survey. Below is our classification system for each defect included in this report. If there are any questions or comments, please feel free to contact us at any time.



employs a three-tier defect rating system:

CLASS I: A defect or defects are present that are likely to cause a problem in the long term (2-6 months). Should be addressed in the normal course of maintenance scheduling.

CLASS II: A defect or defects are present that are likely to cause a failure in the short term (less than 2 months). Should be addressed as soon as practical, on a high maintenance priority. Consideration should be given to increase monitoring frequency.

CLASS III: A defect or defects are present that make continued component reliability unpredictable and likelihood of secondary damage is high. Consideration should be given to an unscheduled shutdown to correct.



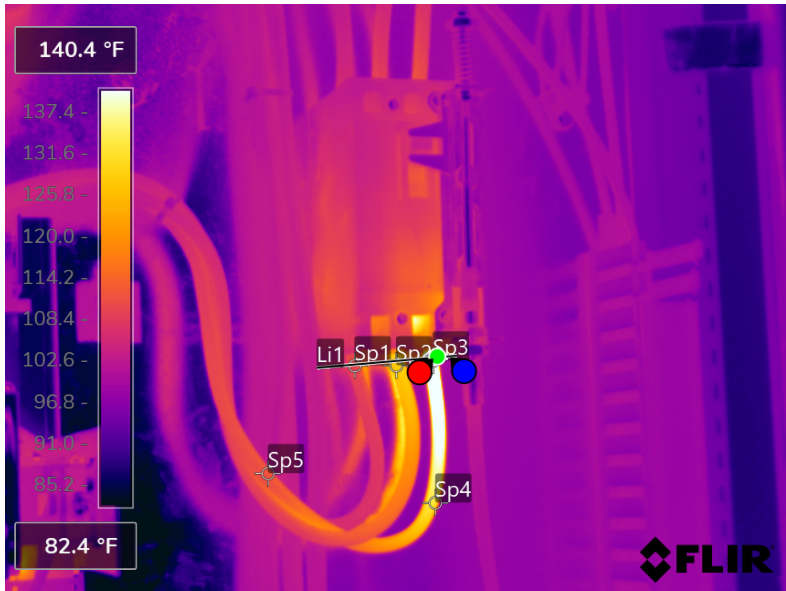
tests and inspects industrial machinery and equipment and makes recommendations concerning maintenance and repairs based on its experience in the field of industrial repair and maintenance. The information contained herein is provided as an opinion only, not as a guaranty or warranty of the matters discussed herein.

Component

C Phase Load Side Lead Connection

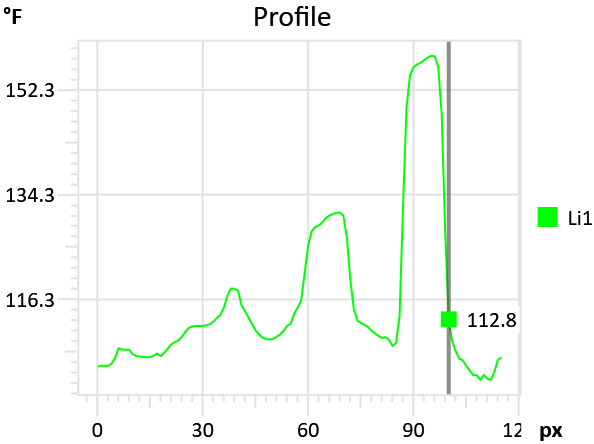
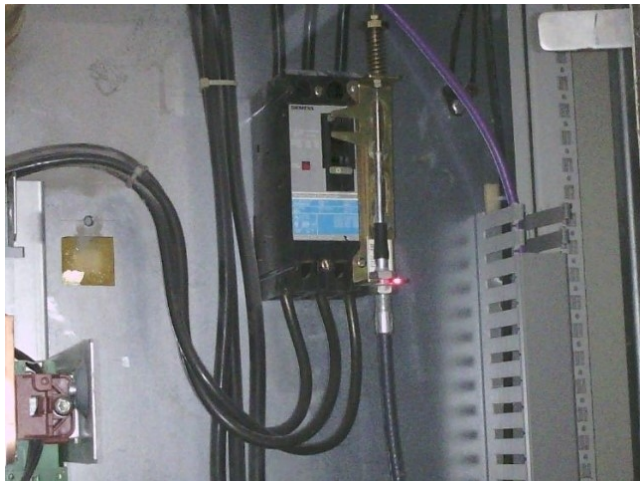
Equipment/Asset ID

VFD-MCP1 Machine Chest Pump 3A



Measurements

Sp2	129.2 °F
Sp3	157.2 °F
Sp4	131.8 °F
Sp5	114.0 °F
Li1	
Max	158.2 °F
Avg	116.5 °F
Min	102.5 °F
Sp1	111.7 °F



Fault

Faulty Connection

Defect Rating

CLASS I

Recommendations

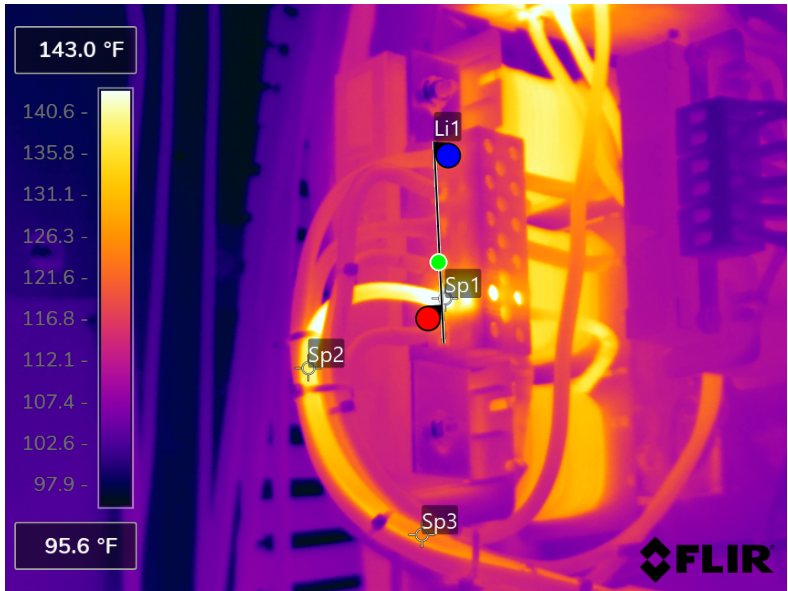
IR image shows C phase load side connection to have issue. Inspect lead wire, lug connection ensuring a clean and tight connection.

Component

Lead wire/connection

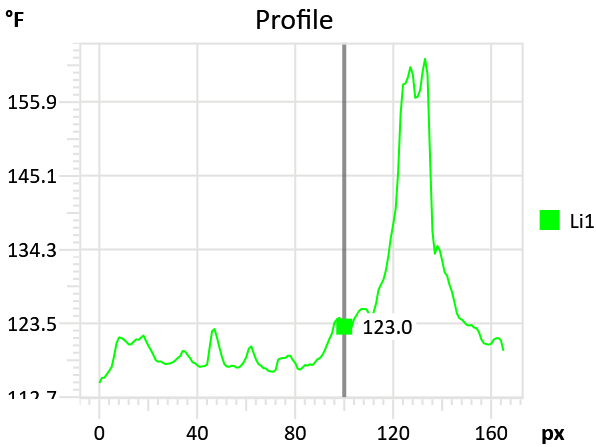
Equipment/Bucket ID

VFD-Forming



Measurements

Sp2	138.8 °F
Sp3	124.8 °F
Li1	
Max	162.2 °F
Avg	124.4 °F
Min	114.8 °F
Sp1	159.4 °F



Fault

Bad wire/connection

Defect Rating

CLASS III

Recommendations

Wire has visible damage from connection issue. It is recommended to replace or cut back wire and reconnect ensuring a clean and tight connection.

Component

B Phase lead connection

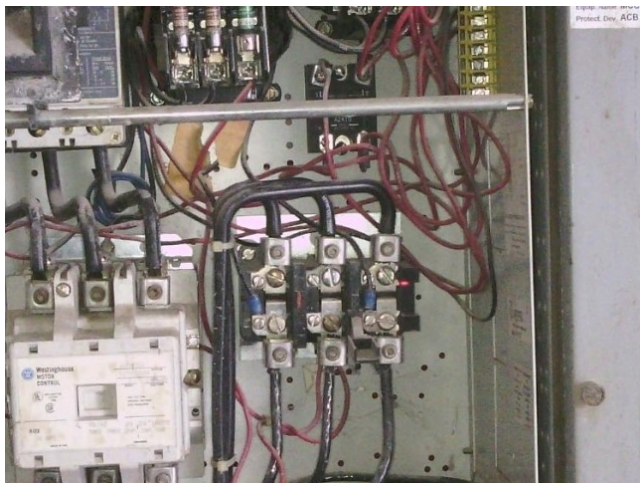
Equipment/Bucket ID

MCC-7B2 M1443 Seal Water Collector Tank Pump



Measurements

Sp2	129.5 °F
Sp3	113.1 °F
Li1	
Max	133.9 °F
Avg	110.4 °F
Min	95.4 °F
Sp1	113.3 °F



Fault

Faulty connection

Defect Rating

CLASS I

Recommendations

Looks like a minor issue, but B phase connection appears to be faulty. Check lead/lug and ensure connection is clean and tight.



Summary

File name	Created	Maximum temp.	Page number
FLIR0465.jpg	3/24/2023 3:14:28 AM	158.2 °F	3
FLIR0467.jpg	3/24/2023 3:17:23 AM	164.1 °F	4
FLIR0469.jpg	3/24/2023 3:22:16 AM	242.1 °F	5



This concludes our survey report. Please feel free to contact us at any time for question or comments.

Thank you for your business,

Kerion W. Maxwell



ITC Certified Level II Infrared
Thermographer

(901) 486-4565

kwilliam@gohispeed.com