




USG June 2023 Infrared Survey Report



All electrical panels were scanned using a  **FLIR** T865 infrared camera. The following report only contains defects that were found during the survey. Below is our classification system for each defect included in this report. If there are any questions or comments, please feel free to contact us at any time.



employs a three-tier defect rating system:

CLASS I: A defect or defects are present that are likely to cause a problem in the long term (2-6 months). Should be addressed in the normal course of maintenance scheduling.

CLASS II: A defect or defects are present that are likely to cause a failure in the short term (less than 2 months). Should be addressed as soon as practical, on a high maintenance priority. Consideration should be given to increase monitoring frequency.

CLASS III: A defect or defects are present that make continued component reliability unpredictable and likelihood of secondary damage is high. Consideration should be given to an unscheduled shutdown to correct.



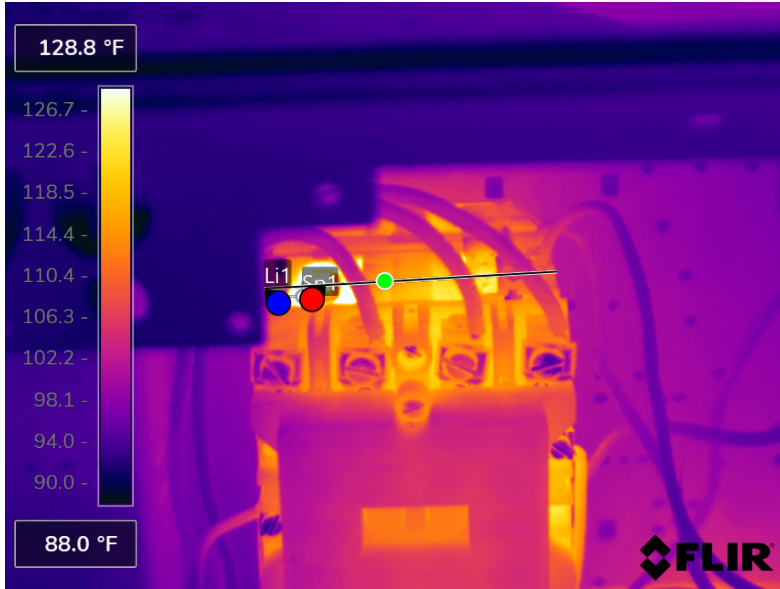
tests and inspects industrial machinery and equipment and makes recommendations concerning maintenance and repairs based on its experience in the field of industrial repair and maintenance. The information contained herein is provided as an opinion only, not as a guaranty or warranty of the matters discussed herein.

Component

Motor contactor

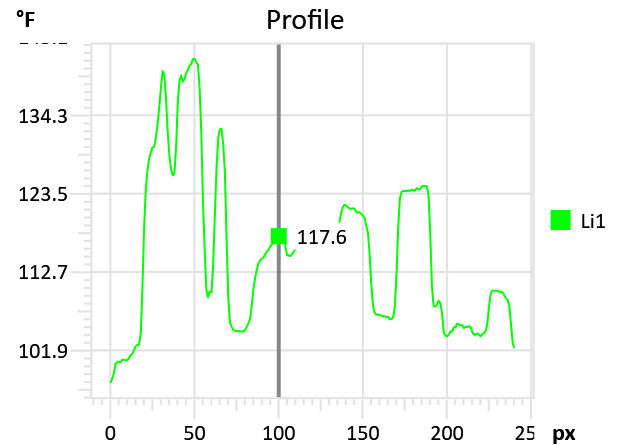
Equipment/Bucket ID

MCC FG2 M5378 #2 oven exhaust fan



Measurements

Li1	
Max	142.1 °F
Avg	115.6 °F
Min	97.4 °F
Sp1	135.4 °F



Fault

possible connection issue

Defect Rating

CLASS I

Recommendations

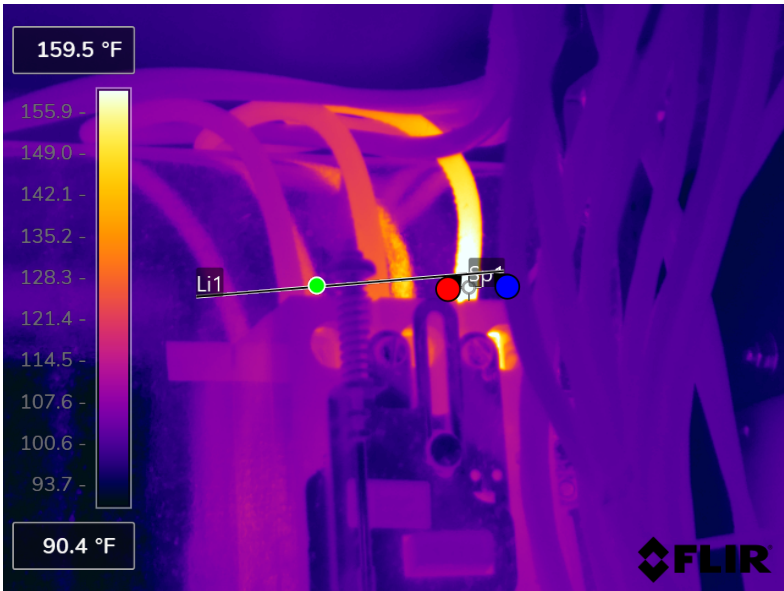
IR image shows heat on the back side of the contactor. Also seems to be some discoloration from heat Inspect soon.

Component

C Phase connection

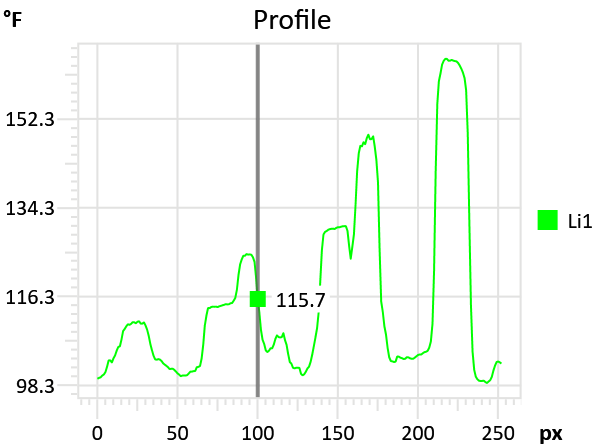
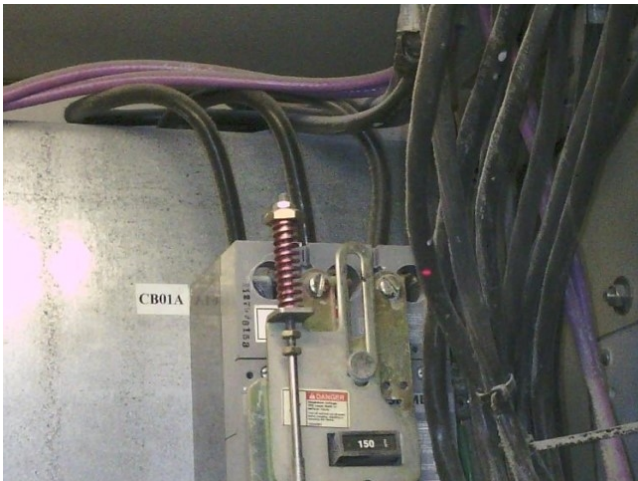
Equipment/Bucket ID

VFD Panel D Fiberglass Line Drive



Measurements

Li1	
Max	164.5 °F
Avg	115.8 °F
Min	98.8 °F
Sp1	165.6 °F



Fault

connection issue

Defect Rating

CLASS II

Recommendations

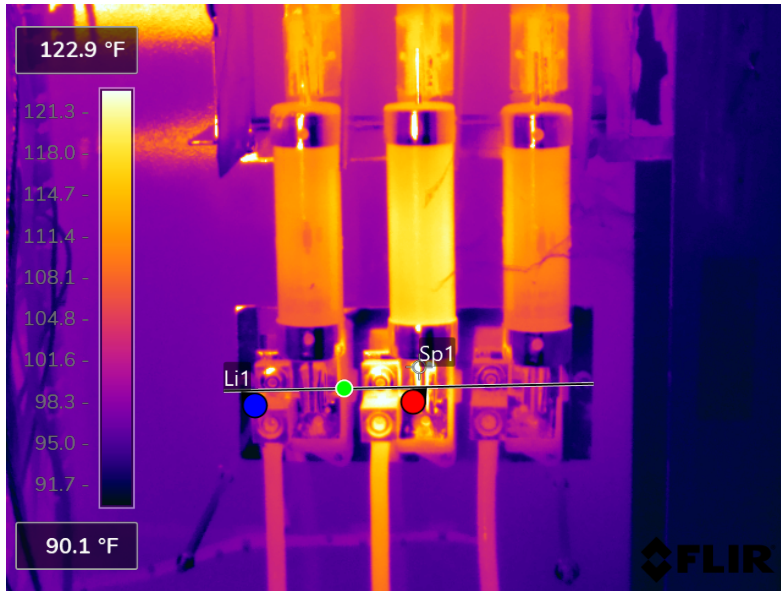
Line side c phase connection appears to have an issue. Check connection ensuring a clean and tight connection.

Component

B phase fuse

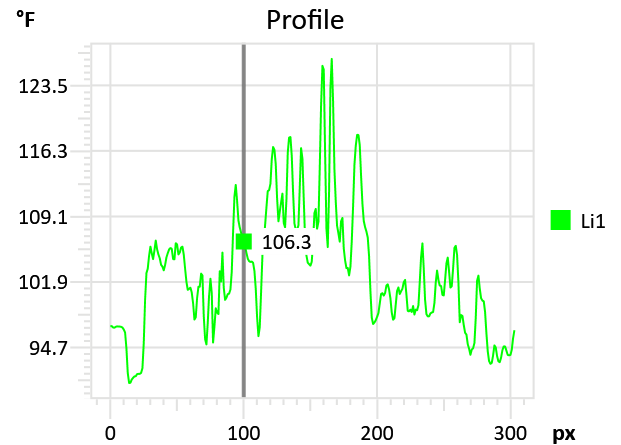
Equipment/Bucket ID

Fiberglass Dust Collector Control Panel



Measurements

Li1	
Max	126.4 °F
Avg	102.9 °F
Min	90.8 °F
Sp1	125.1 °F



Fault

Faulty fuse connections

Defect Rating

CLASS I

Recommendations

B phase fuse holder appears to have 25 degree delta from A and C phase. Check fuse ensuring a tight and clean connection.



Summary

File name	Created	Maximum temp.	Page number
FLIR0505.jpg	7/7/2023 3:07:55 AM	151.2 °F	3
FLIR0507.jpg	7/7/2023 3:13:28 AM	171.5 °F	4
FLIR0509.jpg	7/7/2023 3:19:21 AM	201.1 °F	5



This concludes our survey report. Please feel free to contact us at any time for question or comments.

Thank you for your business,

Kerion W. Maxwell



ITC Certified Level II Infrared
Thermographer

(901) 486-4565

kwilliam@gohispeed.com