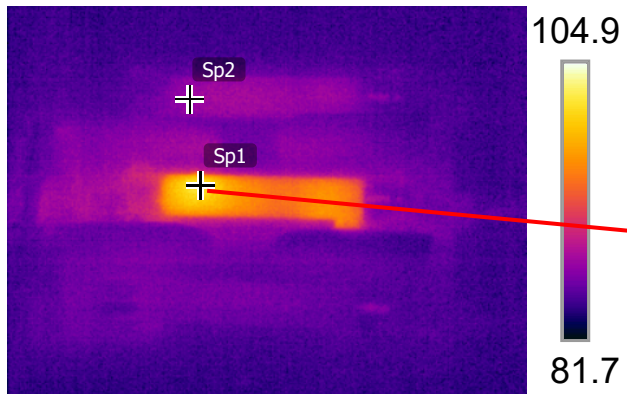


8/26/2021 5:42:42 AM



IR\_1936.jpg S60 NTSC 21801575

8/26/2021 5:43:01 AM



DC\_1937.jpg

#### Measurements

Sp1	102.3 °F
Sp2	87.0 °F

#### Parameters

Emissivity	0.95
Refl. temp.	49 °F

Infrared data indicates that Phase B fuse is operating at 20\* higher than phase A and C . Clean fuse holder and replace all 3 fuses with matching fuse brand and amprage ratings .