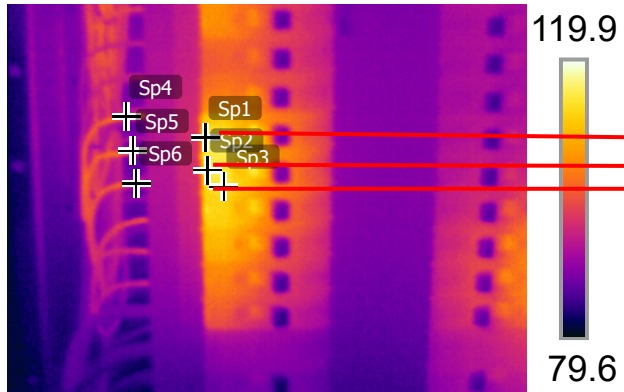
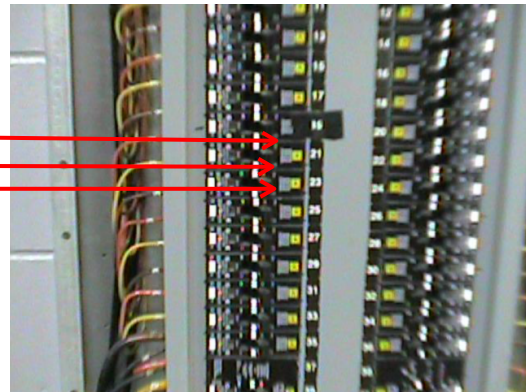


8/26/2021 9:56:20 AM



IR_1944.jpg S60 NTSC 21801575

8/26/2021 9:56:30 AM



DC_1945.jpg

Measurements

| | |
|-----|----------|
| Sp1 | 116.4 °F |
| Sp2 | 116.4 °F |
| Sp3 | 115.8 °F |
| Sp4 | 102.0 °F |
| Sp5 | 102.3 °F |
| Sp6 | 103.0 °F |

Parameters

| | |
|-------------|-------|
| Emissivity | 0.95 |
| Refl. temp. | 49 °F |

Infrared data indicates that Breakers 25,26,27 are operating at a higher temperature than the wires that are connected to them. This could be load related or weak breakers. Check load ,shed load if needed, or replace breakers with new breakers,NOT exceeding the wire rated load.