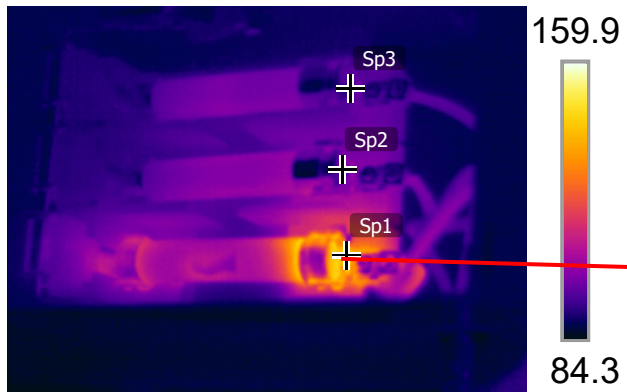


8/25/2021 6:56:18 AM



IR_1927.jpg S60 NTSC 21801575

8/25/2021 6:56:28 AM



DC_1928.jpg

Measurements

Sp1	150.2 °F
Sp2	97.3 °F
Sp3	95.9 °F

Parameters

Emissivity	0.95
Refl. temp.	49 °F

Infrared data indicate that Phase C has a high resistance connection on the fuse clip. Replace fuses with matching fuses and clean and check fuse holder for looseness and damage.