

# CHESTER HOIST

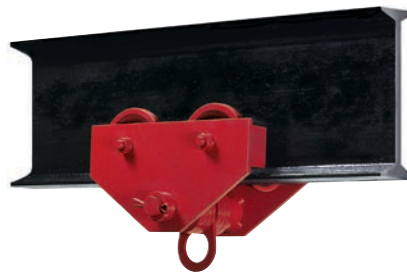
"Performance Plus Flexibility"



## GEARED



## PLAIN



## HAND PROPELLED OVERHEAD I-BEAM TROLLEYS

Lifetime lubricated precision ball bearings, in 1/4 through 3 ton capacity trolleys, assure a minimum of manual effort and also of maintenance.

In the 4 ton through 25 ton capacities, each trolley is equipped with eight duo-sealed Timken tapered roller bearings that absorb the radial and thrust loads exerted in these heavier sizes, and reduce manual effort and maintenance to a minimum.

Heavy rolled steel sideplates are shaped to give these trolley units stability and rigidity. They extend beyond the wheels to act as bumpers. Steel equalizing pins connect the two halves of each trolley, providing load equalization and smooth operation.

Trolley wheels are long wearing alloy cast iron. Wheel treads are machined to provide smoothest possible rolling motion. Steel axles are rigidly supported in the side frame. Steel trolley blocks reinforce the side plates as well as the equalizing pin.

CATALOG NUMBER		RATED CAPACITY IN TONS	BEAM ADJUSTMENT RANGE *	MINIMUM BEAM HEIGHT **	HAND CHAIN REACH FROM BEAM GEARED TROLLEY	SMALLEST RADIUS CURVE ***	LBS. OF PUSH TO MOVE PLAIN TROLLEY, FULLY LOADED	NET WEIGHT, LBS.	
PLAIN TROLLEY	GEARED TROLLEY							PLAIN TROLLEY	GEARED TROLLEY
1641-0025	—	1/4	2.66" - 5.0"	4"	8'	20"	7	23	38
1641-0050	—	1/2	2.66" - 5.0"	4"	8'	20"	14	23	38
1641-0100	1642-0100	1	3" - 6"	5"	8'	24"	18	43	62
1641-0150	1642-0150	1 1/2	3" - 6"	5"	8'	24"	28	45	65
1641-0200	1642-0200	2	3.33" - 6.25"	6"	8'	30"	38	67	90
1641-0300	1642-0300	3	3.33" - 6.25"	6"	8'	30"	44	70	93
1641-0400	1642-0400	4	4" - 7"	8"	8'	36"	59	155	184
1641-0500	1642-0500	5	4" - 7"	8"	8'	36"	61	160	188
1641-0600	1642-0600	6	4" - 7"	8"	8'	36"	73	160	188
1641-0800	1642-0800	8	4.62" - 8"	10"	8'	60"	85	300	347
1641-1000	1642-1000	10	4.62" - 8"	10"	8'	60"	90	310	360
1641-1200	1642-1200	12	4.62" - 8"	10"	8'	60"	110	310	360
1641-1600	1642-1600	16	6" - 8"	12"	8'	96"	120	600	650
1641-2000	1642-2000	20	6" - 8"	12"	8'	96"	156	610	660
1631-2500	1632-2500	25	6" - 8"	18"	8'	120"	195	1045	1200
1641-3000	1642-3000	30	7" - 8"	24"	8'	N.A.	240	1520	1615
1641-4000	1642-4000	40	7" - 8"	24"	8'	N.A.	312	1776	1886
1631-5000	1632-5000	50	7" - 8"	24"	8'	N.A.	390	2676	2831

1/4 through 20 ton units are supplied straight sided with universal wheels for operation on flat or tapered beams.

For patented track applications consult factory.

25 and 50 ton units are supplied with canted side plates for operation on standard American tapered I-beams.

For other beams consult factory.

**Chester Hoist**

**Lisbon, Ohio U.S.A. 44432**

**Phone (330) 424-7248**

**Fax (330) 424-3126**

**Email chhoist@valunet.com**

\*NOTE: Consult factory for beams outside of this standard range.

\*\*NOTE: Beam height shown is for proper wheel running clearance only. The customer must verify their chosen beam is adequate for the intended application and loads. Consult factory for beams smaller than the minimum specified.

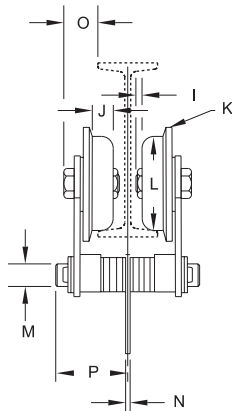
\*\*\*NOTE: Minimum radius applies to minimum flange width and may vary with beam. For curve applications consult factory. Curves must be specified when ordering.

## Model PT Bulletin F

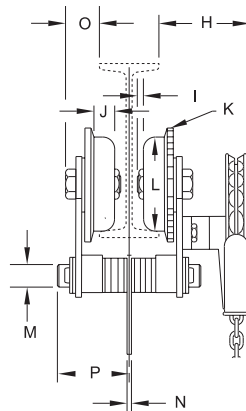
## CLEARANCE DIMENSIONS

All dimensions are in inches

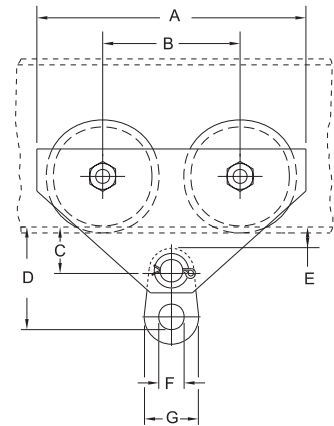
### Fully Sealed **PRECISION BEARING TROLLEYS** Model PT Machined Wheel Treads



**PLAIN**



**GEARED**



Wheels with convex treads are standard on  
all capacities 1/4 ton through 20 ton.  
30, 40 & 50 Ton Trolleys aDie Linere

furnished in tandem construction.  
Consult factory for dimensions

Capacity Dimension	1/4-1/2 TON	1 TON	1 1/2 TON	2 TON	3 TON	4 TON	5-6 TON	8 TON	10-12 TON	16 TON	20 TON	25 TON
A	11 1/2"	13 1/4"	13 1/4"	15 5/8"	15 5/8"	18 3/4"	18 3/4"	23 5/8"	23 5/8"	28"	28"	28 1/4"
B	6"	6 3/4"	6 3/4"	7 5/8"	7 5/8"	8 1/2"	8 1/2"	10 5/8"	10 5/8"	12"	12"	14"
C	1 7/8"	2 1/4"	2 1/4"	2 5/8"	2 5/8"	3 1/4"	3 1/4"	3 7/8"	3 7/8"	4 3/4"	4 3/4"	5 7/8"
D	4 7/8"	5 3/8"	5 5/8"	6 3/4"	6 7/8"	8 3/8"	8 5/8"	10 5/8"	11 1/8"	13 3/4"	16 3/4"	16 3/4"
E	7/8"	1"	1"	1 1/8"	1 1/8"	1 1/4"	1 1/4"	1 3/8"	1 3/8"	1 7/16"	1 7/16"	2 1/8"
F	1 3/4"	1 3/4"	2"	2 1/8"	2 1/4"	2 3/4"	3"	3 1/2"	4 1/2"	4"	4 1/2"	4"
G	2 3/4"	3"	3 1/4"	3 5/8"	4"	4 3/4"	5 1/2"	6 1/2"	8"	9"	10"	10"
H	6"	6 1/8"	6 1/8"	6 1/8"	6 1/8"	8 1/8"	8 1/8"	9"	9"	10 11/16"	10 11/16"	14 1/2"
I	0"	0"	0"	0"	0"	1/8"	1/8"	1/8"	1/8"	1/4"	1/4"	5/16"
J	7/8"	1 1/8"	1 1/8"	1 1/8"	1 1/8"	1 3/8"	1 3/8"	1 11/16"	1 11/16"	1 3/4"	1 3/4"	2"
K	4"	5"	5"	6"	6"	8"	8"	10"	10"	11 11/16"	11 11/16"	13 1/2"
L	2 7/8"	3 3/4"	3 3/4"	4 1/2"	4 1/2"	6 3/8"	6 3/8"	8 1/4"	8 1/4"	9 3/4"	9 3/4"	11 3/4"
M	1"	1 1/4"	1 1/4"	1 1/2"	1 1/2"	2"	2"	2 1/2"	2 1/2"	3 1/4"	3 1/4"	3 1/4"
N	1/4"	1/4"	3/8"	3/8"	1/2"	5/8"	5/8"	3/4"	1"	1 1/4"	1 1/4"	1 3/4"
O	2"	1 3/4"	1 3/4"	2 1/8"	2 1/8"	2 5/8"	2 5/8"	3 1/4"	3 1/4"	4 5/8"	4 5/8"	7"
P	4 1/8"	4 3/4"	4 3/4"	5 1/4"	5 1/4"	6 1/8"	6 1/8"	6 7/8"	6 7/8"	7 5/8"	7 5/8"	8 1/4"

**\*VARY PROPORTIONALLY  
WITH BEAM SIZE**

**30, 40 & 50 ton dimensions  
on application.**

WARNING

**Overloading and improper use can result in injury.**

**To avoid injury:**

- Do not exceed working load limit, load rating or capacity.
- Do not use to lift people or loads over people.
- Use only alloy chain and attachments for overhead lifting.
- Read and follow all instructions.
- This equipment for manual operation only.