

## **LODESTAR - VALUSTAR HOIST, ALL MODELS**

### **CHAIN BAG INSTALLATION INSTRUCTIONS**

These instructions cover the installation of the chain bag on the Lodestar (Series 627) and the Valustar (Series 624) Electric Chain Hoist. The chain bag consists of one bag and an installation kit.

To facilitate the installation of the chain bag it is recommended that the hoist be suspended from its support and be connected to the power supply system in accordance with the instructions in the manual provided with the hoist. After this is completed install the chain bag as follows:

#### **A. LODESTAR**

- 1. Operate hoist in the down direction to recheck the setting of the lower limit switch. When hook is in its lowest position, there should be a minimum of six (6) (for Models A, A-2, AA, AA-2, B, B-2, C, C-2, E, E-2, F, F-2, H and H-2) or eight (8) (for Models J, J-2, JJ, JJ-2, L, L-2, LL, LL-2, R, R-2, RR, RR-2, RT, RT-2, RRT, AND RRT-2) chain links between the loose end link and the hoist frame on the loose side of the chain. If there are less than the appropriate number of links, reset the lower limit switch per the instructions in Manual No. 627.**
- 2. After the lower limit switch is at the proper setting, remove the loose end screw, lockwasher, plain washer and the loose end (open) link from the hoist frame and allow the loose end of the chain to hang free. Save these parts as they will be reused.**
- 3. Loop the retainer wire around the upper suspension of the hoist. On some units it may be necessary to wrap the retainer wire once or twice around the suspension so that the end loops are one to two inches below the bracket.**
- 4. Assemble the chain bag, bracket, wire retainer, (2) 3/8" Dia. bolts, (6) washers, (2) locknuts as shown in Figure 1.**
- 5. Attach the assembled chain bag (legs facing away from hoist frame) to the hoist frame using the loose end screw, lockwasher and plain washer.**
- 6. Place the loose end of the chain into the bag. The unit is now ready for operation.**



## B. VALUSTAR

1. Remove the loose end screw, plain washer and lockwasher from the hoist frame and allow the loose end of the chain and the chain stop to hang free. Save these parts as they will be reused.
2. Assemble the chain bag, bracket, wire retainer, (2) 3/8" Dia. Bolts, (6) washers, (2) locknuts as shown in Figure 1.
3. Loop the retainer wire around the upper suspension of the hoist. On some units it may be necessary to wrap the retainer wire once or twice around the suspension so that the end loops are one to two inches below the bracket.
4. Attach the assembled chain bag (legs facing away from the hoist frame) to the hoist frame using the loose end screw, lockwasher and plain washer.
5. Place the loose end of the chain into the bag. The unit is now ready for operation.

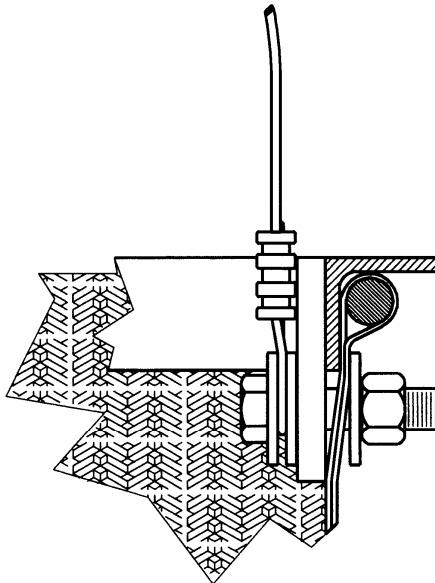


FIGURE 1