

BUDGIT® Hoists

BUDGIT® HI-CAP® ALUMINUM CHAIN BLOCKS INSTRUCTIONS FOR INSTALLING REPLACEMENT UPPER HOOKS

To facilitate field installation of replacement upper hooks on BUDGIT HI-CAP Aluminum Chain Blocks, BUDGIT has revised its assembly method for securing the hook nut on the shank of the hook. Instead of the former welded method, hook nuts are now pinned in place as illustrated below. To permit pinning, a cored 3/4" diameter access hole has been added to the 3, 4, 5, and 6-ton capacity frames. The 8 and 10-ton capacity frames have always had an access hole.

All hook kits (see other side) furnished for replacement of upper hooks on 3 through 10-ton capacity HI-CAP Chain Blocks will be of the new pinned design. Nuts will be pre-drilled on the hook shank and a grooved pin will be included.

Install replacement upper hooks as follows:

- 1) After the old hook has been removed, thoroughly inspect frame for any evidence of cracks or damage. Always replace a cracked or damaged frame.
- 2) If frame is equipped with an access hole as illustrated below, insert shank of hook into hole at top of frame. Lubricate and install washer (from kit) over end of hook shank and screw hook nut onto shank. Align drilled hole in nut with drilled hole in hook shank and install grooved pin. Drive the pin into place using a drift punch through the access hole. There should be a 1/32" end clearance between hook shoulder and top of frame so that hook can turn freely.
- 3) If frame does not have an access hole, one must be drilled prior to assembly of upper hook. Locate and drill hole as illustrated below. Replacement hook can now be installed as outlined in Step 2 above.
- 4) TEST HOIST. After hoist has been completely reassembled and lubricated in accordance with manufacturer's instructions* suspend it from a suitable structure and operate hoist under load to check for smooth and proper operation. Load test hoist at 125% of rated load as outlined in ANSI Overhead Hoist Specification 030.16.

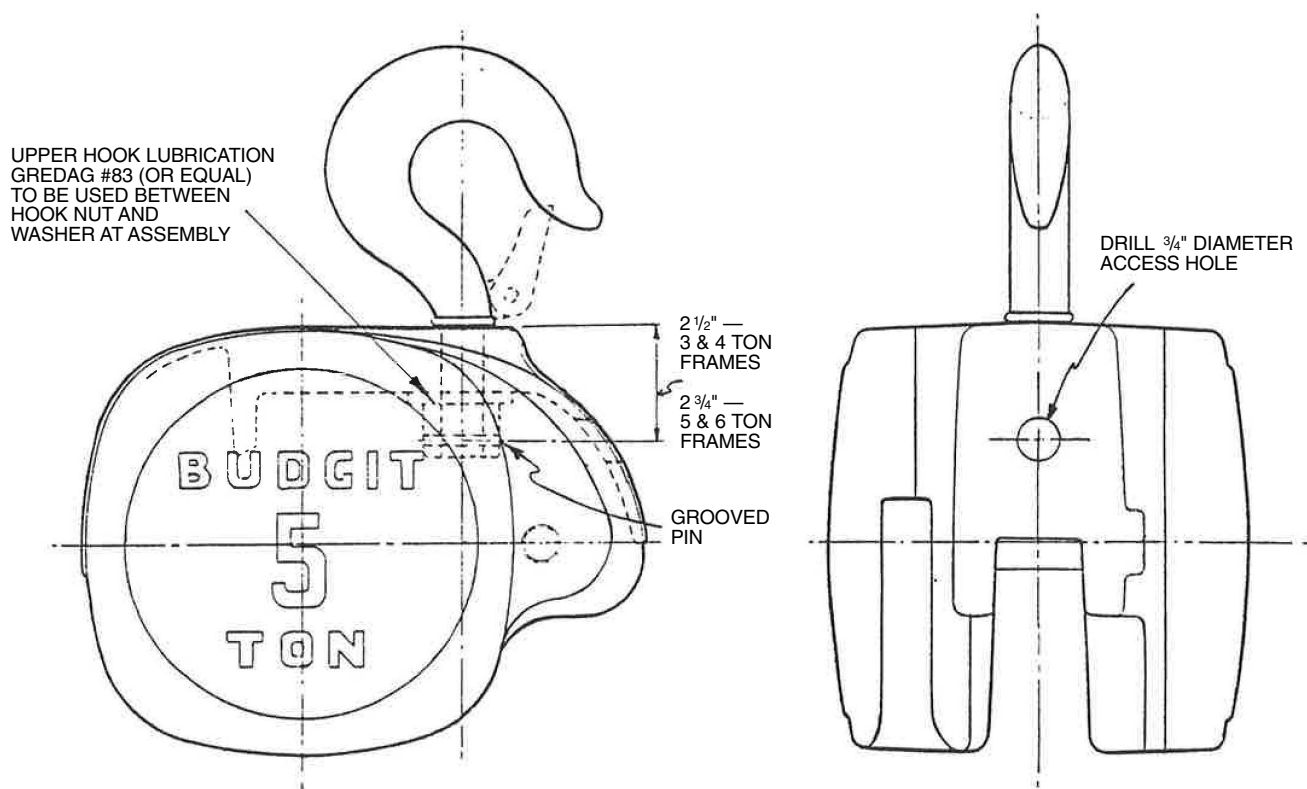
* Copies of the BUDGIT HI-CAP Aluminum Chain Block Parts List and Instruction Manual are available on request.

WARNING

The grooved pin must be properly installed to securely lock the hook nut onto shank of hook and avoid possibility of the nut loosening and coming off. The pin must have a tight drive fit in the hole drilled through nut and shank and it must be completely inserted to provide full engagement.

Repeated removal and replacement of the grooved pin, for maintenance inspection, may cause enlargement of the drilled hole and result in reduced insertion force. If this occurs, it is recommended that the hook, nut and grooved pin be replaced using only factory approved parts.

DIMENSIONS FOR LOCATING & DRILLING ACCESS HOLE



UPPER HOOK REPLACEMENT KITS

The following upper hook replacement kits are only available for BUDGIT HI-CAP Aluminum Chain Blocks.
Order by Kit Part Number from list below.

HOIST CAPACITY	CATALOG NO.	UPPER HOOK KIT
3 TON	264 & R264	Part No. 112974-7 Consists of: Hook and Nut Assembly Washer Grooved Pin Latch Kit
4 TON	265 & R265	Part No. 112974-8 Consists of: Hook and Nut Assembly Washer Grooved Pin Latch Kit
5 TON	266 & R266	Part No. 112974-9 Consists of: Hook and Nut Assembly Washer Grooved Pin Latch Kit
6 TON	267 & R267	Part No. 112974-10 Consists of: Hook and Nut Assembly Washer Grooved Pin Latch Kit
8 TON	268 & R268	Part No. 112974-11 Consists of: Hook and Nut Assembly Washer Grooved Pin Latch Kit
10 TON	269 & R269	Part No. 112974-12 Consists of: Hook and Nut Assembly Washer Grooved Pin Latch Kit