



345 Adams Circle  
Corona, CA 92882  
Phone: 951-735-8220  
Fax: 951-735-2372  
E-mail: sales@ductowire.com

1351 W. Second Street  
Oconomowoc, WI 53066  
Phone: 262-567-2288; 800-434-0062  
Fax: 262-567-0857  
E-mail: sales@ductowire.com

1445 Norjohn Ct., Unit 10  
Burlington, ON L7L 0E6  
Phone: 905-331-2612; 800-361-9473  
Fax: 905-331-6639; 800-663-0933  
E-mail: dow@ductowire.ca

# PUSH BUTTON INSERTS

## J SERIES RPS SERIES PSW SERIES

### SCHEMATIC & OPERATIONAL DIAGRAMS

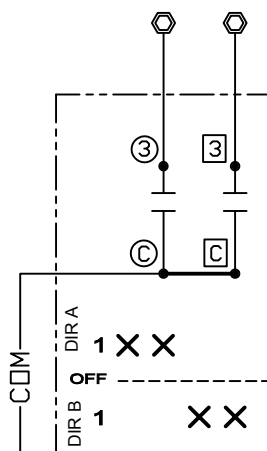
(MULTI-SPEED INSERTS ARE ALL PROGRESSIVE STEP)

## WARNING

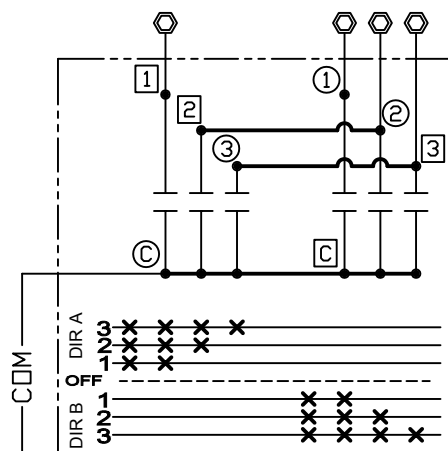
MAKE CERTAIN POWER SUPPLY IS DISCONNECTED BEFORE INSTALLING, REPAIRING, OR WORKING IN THE PROXIMITY OF ANY ELECTRICAL SYSTEM. ONLY QUALIFIED ELECTRICAL PERSONNEL SHOULD INSTALL OR REPAIR THESE PRODUCTS.

NOT DESIGNED FOR  
DC CIRCUITS

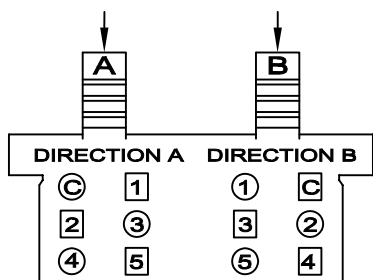
MECHANICAL INTERLOCK MODELS PB-1B, PB-3B, PB-5B, ETC. USE THE SAME WIRING DIAGRAM AS THEIR RESPECTIVE "A" MODEL.



**PB-1A**  
**1 - SPEED INSERT**

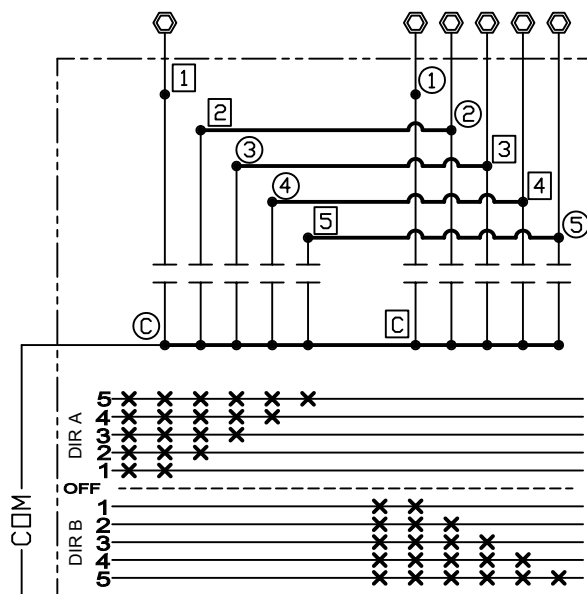


**PB-3A**  
**MULTI - SPEED INSERT**  
**3 - SPEED WIRING**



□ FRONT SIDE TERMINALS (DIR A)  
○ BACK SIDE TERMINALS (DIR B)

**TYPICAL PB**  
**TERMINAL**  
**LAYOUT**



**PB-5A**  
**MULTI - SPEED INSERT**  
**5 - SPEED WIRING**

#### NOTES:

1. TERMINALS FOR SINGLE AND MULTI-SPEED PUSH BUTTON INSERTS ARE NOT ALL FOUND ON THE SAME SIDE OF THE PUSH-BUTTON TERMINAL BLOCK.
2. THE NON-MECHANICAL SWITCHES SHOULD BE ELECTRICALLY INTERLOCKED IN THE CONTROL PANEL THROUGH THE REVERSING CONTACTOR.

**PUSH-BUTTON INSERT RATING: 125 VAC, ONE AMP CONTINUOUS PER CONTACT**

# PUSH BUTTON INSERTS

## J SERIES RPS SERIES PSW SERIES

### SCHEMATIC & OPERATIONAL DIAGRAMS

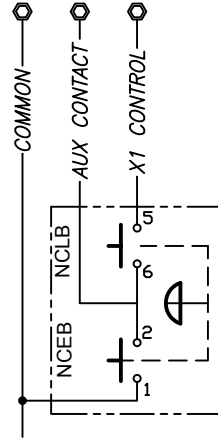
#### ⚠ WARNING

MAKE CERTAIN POWER SUPPLY IS DISCONNECTED BEFORE INSTALLING, REPAIRING, OR WORKING IN THE PROXIMITY OF ANY ELECTRICAL SYSTEM. ONLY QUALIFIED ELECTRICAL PERSONNEL SHOULD INSTALL OR REPAIR THESE PRODUCTS.

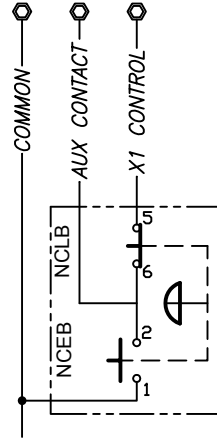
NOT DESIGNED FOR DC CIRCUITS

#### 3 POSITION E-STOP

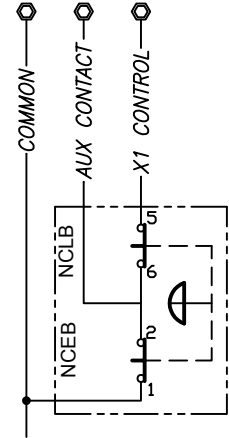
POSITION 1 = OFF (DOWN)



POSITION 2 = RUN (CENTER)

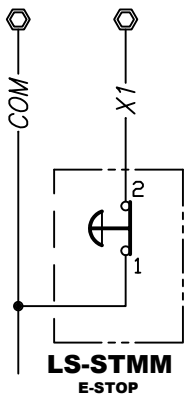


POSITION 3 = START (PULL - MOMENTARY)



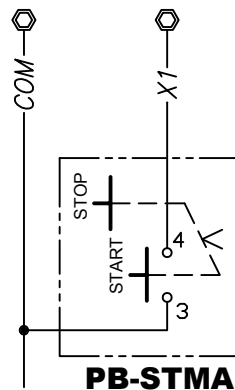
**LS-STMM-A** E-STOP WITH MOMENTARY START

#### E-STOP

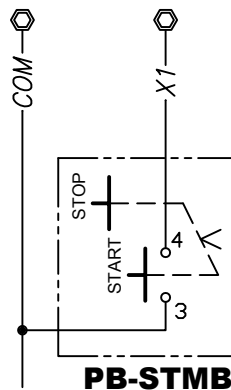


**LS-STMM**  
E-STOP

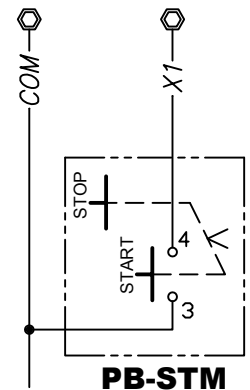
#### MAINTAINED START/STOP INSERTS



**PB-STMA**

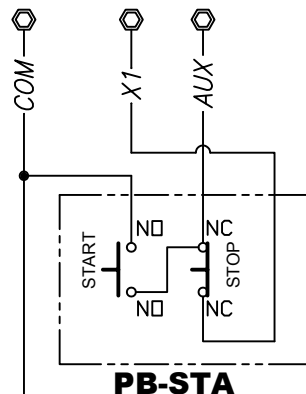


**PB-STMB**

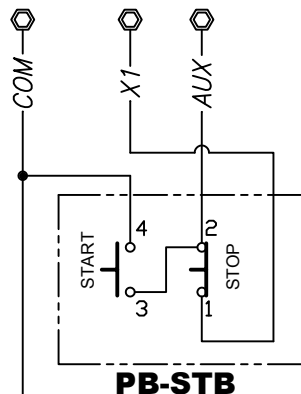


**PB-STM**

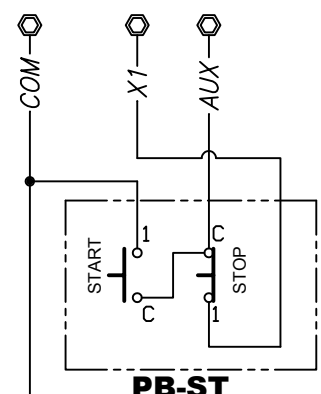
#### MOMENTARY START/STOP INSERTS



**PB-STA**



**PB-STB**



**PB-ST**

PUSH-BUTTON INSERT RATING: 125 VAC, ONE AMP CONTINUOUS PER CONTACT