



345 Adams Circle
Corona, CA 92882
Phone: 800-735-1922
Fax: 800-735-0857

1351 W. Second Street
Oconomowoc, WI 53066
Phone: 262-567-2288
Fax: 262-567-0857

1445 Norjohn Ct. Unit 10
Burlington, Ontario, Canada L7L 0E6
Phone: 905-331-2612; 800-361-9473
Fax: 905-331-6639; 800-663-0933

ductowire.com

PUSH BUTTON INSERTS L SERIES

SCHEMATIC & OPERATIONAL DIAGRAMS

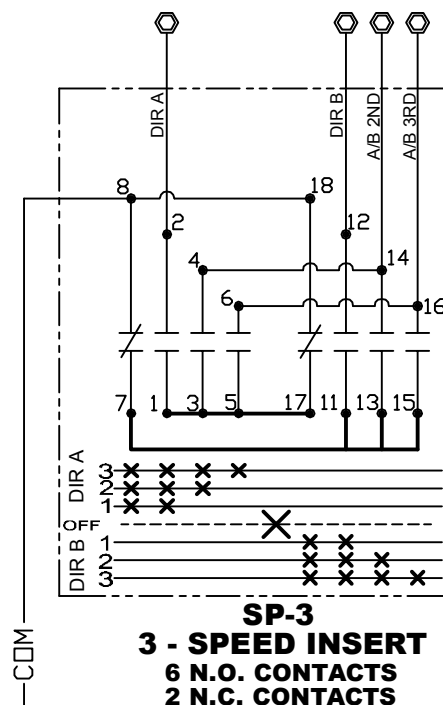
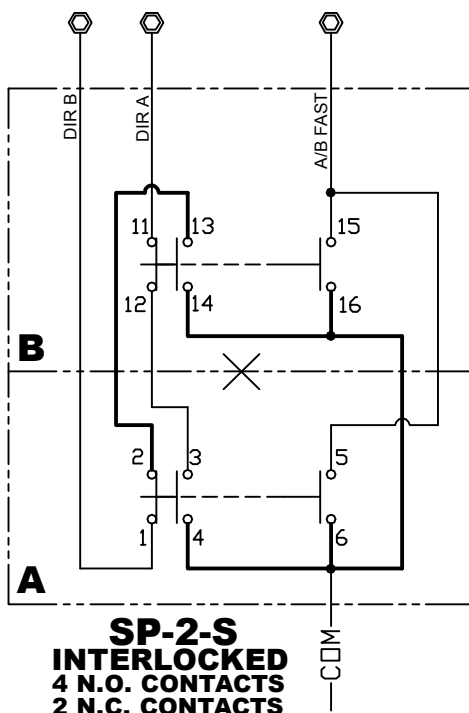
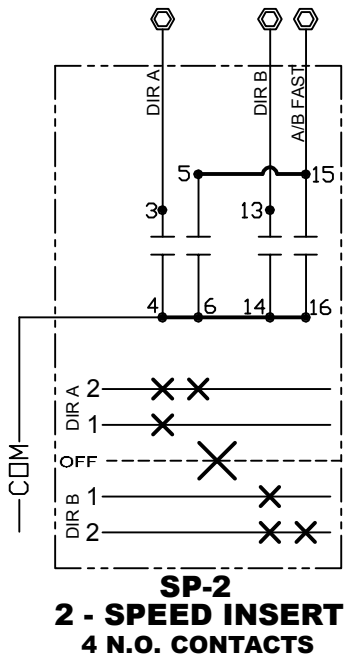
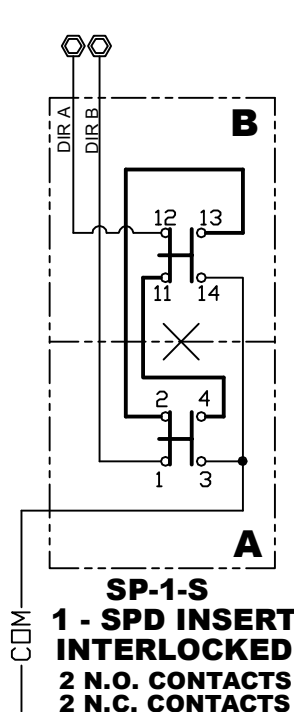
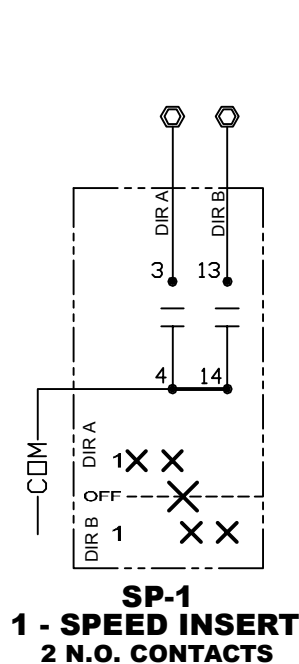
(MULTI-SPEED INSERTS ARE ALL PROGRESSIVE STEP UNLESS SPECIFIED)

⚠ WARNING

MAKE CERTAIN POWER SUPPLY IS DISCONNECTED BEFORE INSTALLING, REPAIRING, OR WORKING IN THE PROXIMITY OF ANY ELECTRICAL SYSTEM. ONLY QUALIFIED ELECTRICAL PERSONNEL SHOULD INSTALL OR REPAIR THESE PRODUCTS.

NOT DESIGNED FOR DC CIRCUITS

Duct-O-Wire Company reserves the right to alter or amend technical specifications at any time without notice.



PUSH-BUTTON INSERT RATING: 125 VAC, ONE AMP CONTINUOUS PER CONTACT

PUSH BUTTON INSERTS L SERIES

SCHEMATIC & OPERATIONAL DIAGRAMS

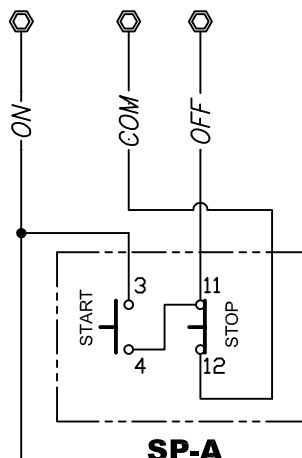
⚠ WARNING

MAKE CERTAIN POWER SUPPLY IS DISCONNECTED BEFORE INSTALLING, REPAIRING, OR WORKING IN THE PROXIMITY OF ANY ELECTRICAL SYSTEM. ONLY QUALIFIED ELECTRICAL PERSONNEL SHOULD INSTALL OR REPAIR THESE PRODUCTS.

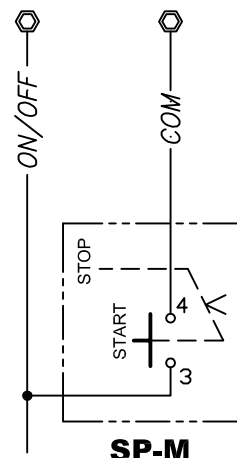
**NOT DESIGNED FOR
DC CIRCUITS**

Duct-O-Wire Company reserves the right to alter or amend technical specifications at any time without notice.

START/STOP INSERTS

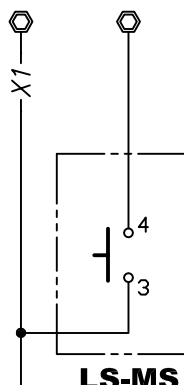


**SP-A
MOMENTARY**

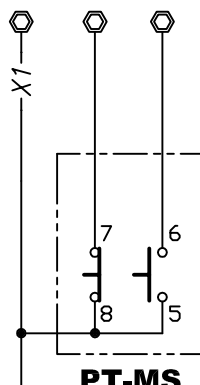


**SP-M
1 N.O. CONTACT
MAINTAINED**

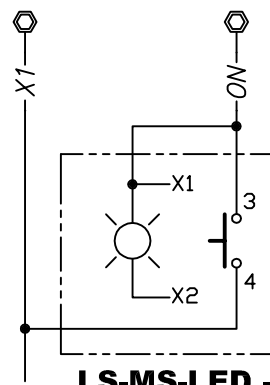
MOMENTARY SWITCHES



LS-MS

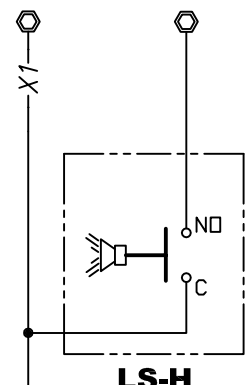


PT-MS



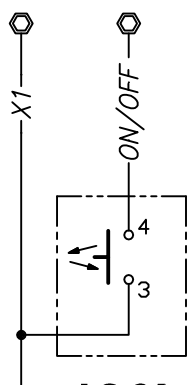
**LS-MS-LED - x
ILLUMINATED**

"x" = SPECIFY COLOR

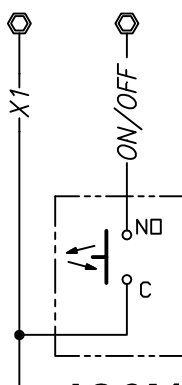


**LS-H
HORN BUTTON**

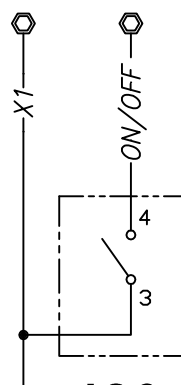
MAINTAINED SWITCHES



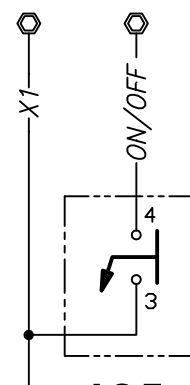
**LS-6A
PUSH ON/OFF**



**LS-6A1
MINI PUSH ON/OFF**



**LS-6
TOGGLE**



**LS-7
KEY SWITCH**

PUSH-BUTTON INSERT RATING: 125 VAC, ONE AMP CONTINUOUS PER CONTACT

PUSH BUTTON INSERTS L SERIES

SCHEMATIC & OPERATIONAL DIAGRAMS

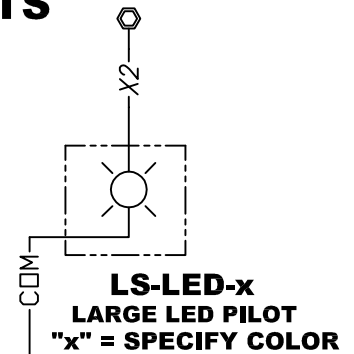
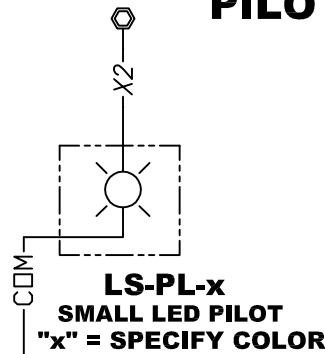
⚠ WARNING

MAKE CERTAIN POWER SUPPLY IS DISCONNECTED BEFORE INSTALLING, REPAIRING, OR WORKING IN THE PROXIMITY OF ANY ELECTRICAL SYSTEM. ONLY QUALIFIED ELECTRICAL PERSONNEL SHOULD INSTALL OR REPAIR THESE PRODUCTS.

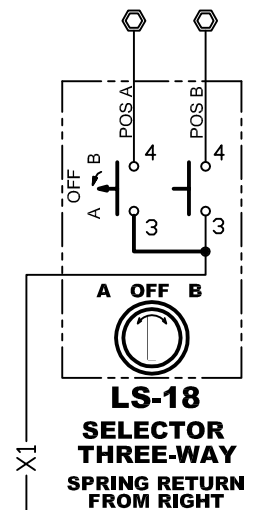
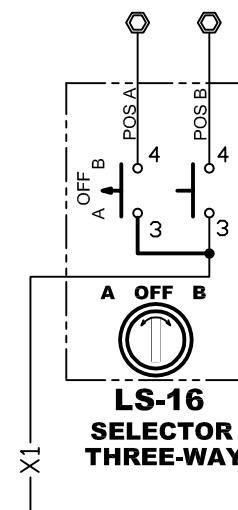
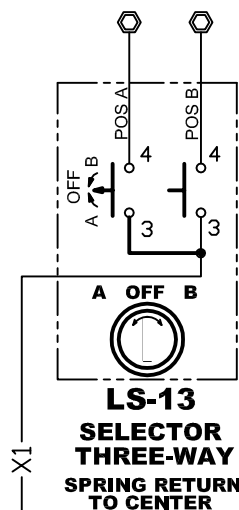
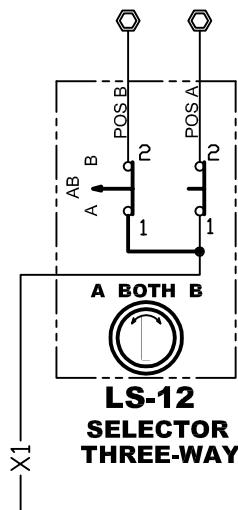
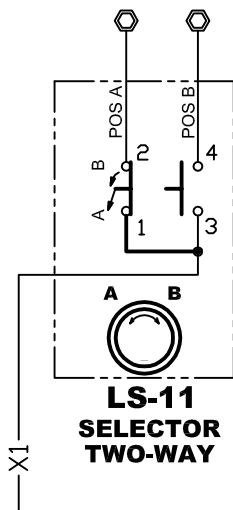
**NOT DESIGNED FOR
DC CIRCUITS**

Duct-O-Wire Company reserves the right to alter or amend technical specifications at any time without notice.

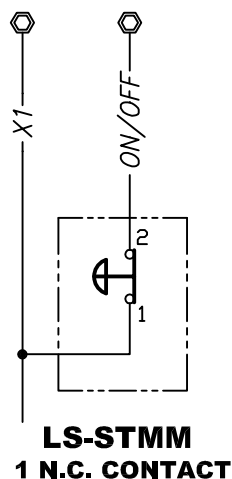
PILOT LIGHTS



SELECTOR SWITCHES



E-STOP

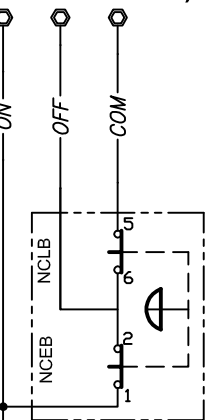
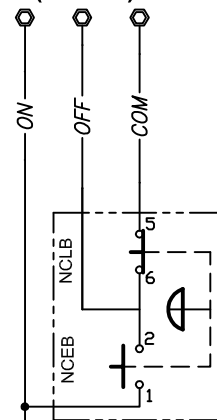
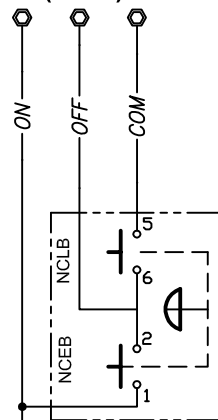


3 POSITION E-STOP

POSITION 1 = OFF
(DOWN)

POSITION 2 = RUN
(CENTER)

POSITION 3 = START
(PULL - MOMENTARY)



LS-STMM-A E-STOP WITH MOMENTARY START

PUSH-BUTTON INSERT RATING: 125 VAC, ONE AMP CONTINUOUS PER CONTACT

PUSH BUTTON INSERTS

L SERIES

INSTALLATION DIAGRAM

