



345 Adams Circle
Corona, CA 92882
Phone: 951-735-8220
Fax: 951-735-2372
E-mail: sales@ductowire.com

1351 W. Second Street
Oconomowoc, WI 53066
Phone: 262-567-2288; 800-434-0062
Fax: 262-567-0857
E-mail: sales@ductowire.com

1445 Norjohn Ct., Unit 10
Burlington, ON L7L 0E6
Phone: 905-331-2612; 800-361-9473
Fax: 905-331-6639; 800-663-0933
E-mail: dow@ductowire.ca

J SERIES PUSH BUTTON INSERTS RPS SERIES PSW SERIES

SCHEMATIC & OPERATIONAL DIAGRAMS

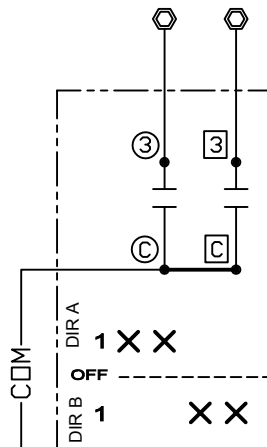
(MULTI-SPEED INSERTS ARE ALL PROGRESSIVE STEP)

⚠ WARNING

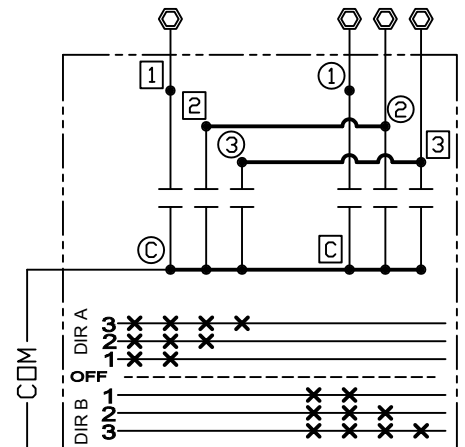
MAKE CERTAIN POWER SUPPLY IS DISCONNECTED BEFORE INSTALLING, REPAIRING, OR WORKING IN THE PROXIMITY OF ANY ELECTRICAL SYSTEM. ONLY QUALIFIED ELECTRICAL PERSONNEL SHOULD INSTALL OR REPAIR THESE PRODUCTS.

NOT DESIGNED FOR
DC CIRCUITS

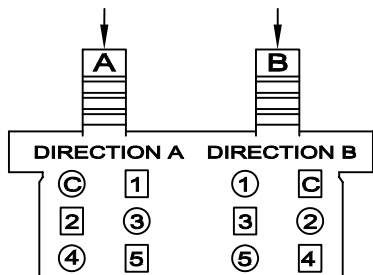
MECHANICAL INTERLOCK MODELS PB-1B, PB-3B, PB-5B, ETC. USE THE SAME WIRING DIAGRAM AS THEIR RESPECTIVE "A" MODEL.



PB-1A
1 - SPEED INSERT

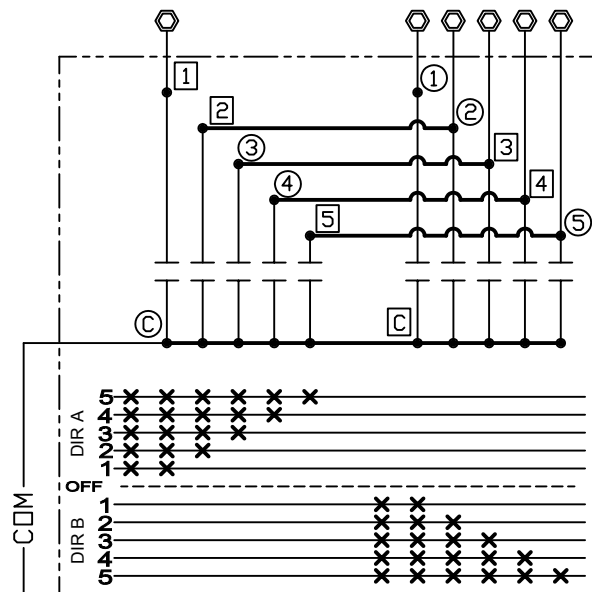


PB-3A
MULTI - SPEED INSERT
3 - SPEED WIRING



□ FRONT SIDE TERMINALS (DIR A)
○ BACK SIDE TERMINALS (DIR B)

TYPICAL PB TERMINAL LAYOUT



PB-5A
MULTI - SPEED INSERT
5 - SPEED WIRING

NOTES:

1. TERMINALS FOR SINGLE AND MULTI-SPEED PUSH BUTTON INSERTS ARE NOT ALL FOUND ON THE SAME SIDE OF THE PUSH-BUTTON TERMINAL BLOCK.
2. THE NON-MECHANICAL SWITCHES SHOULD BE ELECTRICALLY INTERLOCKED IN THE CONTROL PANEL THROUGH THE REVERSING CONTACTOR.

PUSH-BUTTON INSERT RATING: 125 VAC, ONE AMP CONTINUOUS PER CONTACT

PUSH BUTTON INSERTS

J SERIES RPS SERIES PSW SERIES

SCHEMATIC & OPERATIONAL DIAGRAMS

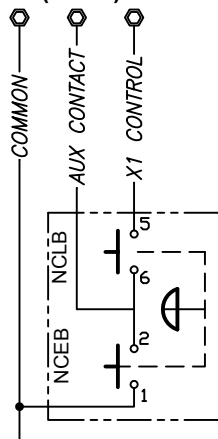
⚠ WARNING

MAKE CERTAIN POWER SUPPLY IS DISCONNECTED BEFORE INSTALLING, REPAIRING, OR WORKING IN THE PROXIMITY OF ANY ELECTRICAL SYSTEM. ONLY QUALIFIED ELECTRICAL PERSONNEL SHOULD INSTALL OR REPAIR THESE PRODUCTS.

NOT DESIGNED FOR
DC CIRCUITS

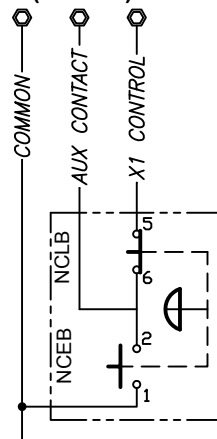
3 POSITION E-STOP

POSITION 1 = OFF
(DOWN)



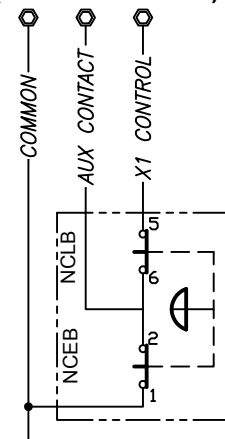
LS-STMM-A

POSITION 2 = RUN
(CENTER)

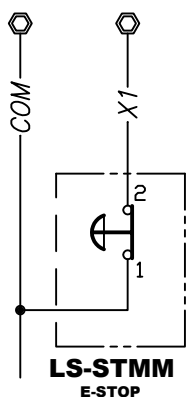


E-STOP WITH MOMENTARY START

POSITION 3 = START
(PULL - MOMENTARY)

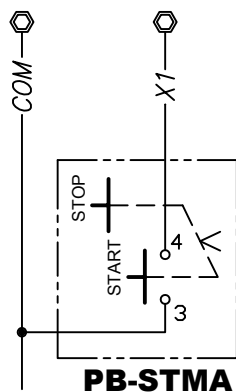


E-STOP

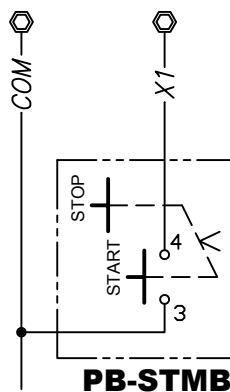


LS-STMM
E-STOP

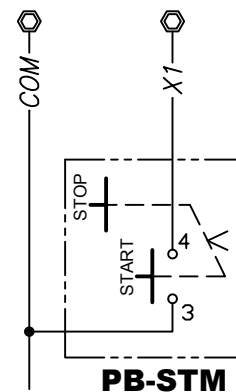
MAINTAINED START/STOP INSERTS



PB-STMA

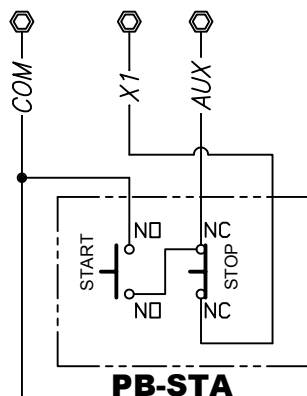


PB-STMB

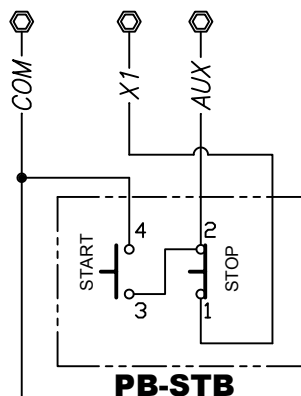


PB-STM

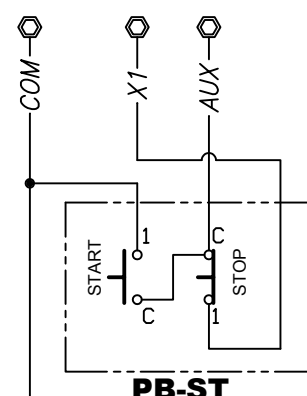
MOMENTARY START/STOP INSERTS



PB-StA



PB-StB



PB-St

PUSH-BUTTON INSERT RATING: 125 VAC, ONE AMP CONTINUOUS PER CONTACT